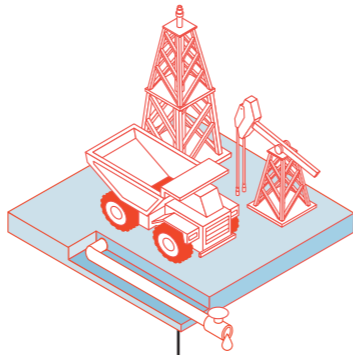
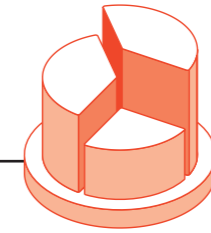


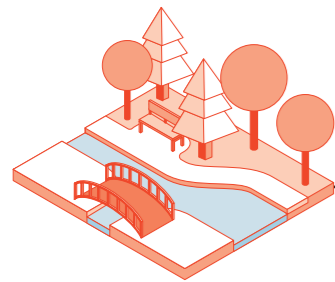
Investment that reduces our reliance on cars encourages compact forms of residential development that protects our natural environment by stopping the sprawling of our cities, increasing public services and social inclusion and preserving open spaces.



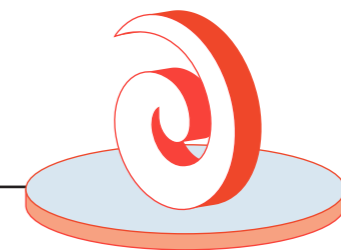
Projects in our regions can engage small local consultants and contractors in infrastructure design, construction and maintenance.



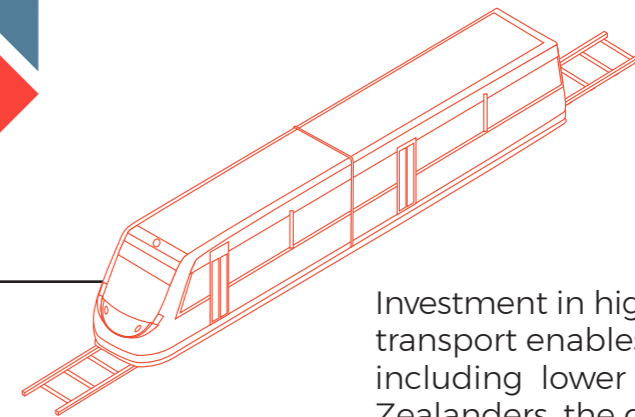
Investment in our urban communities creates employment and services for local communities where skilled commuters live and spend their income generating a positive cycle of development.



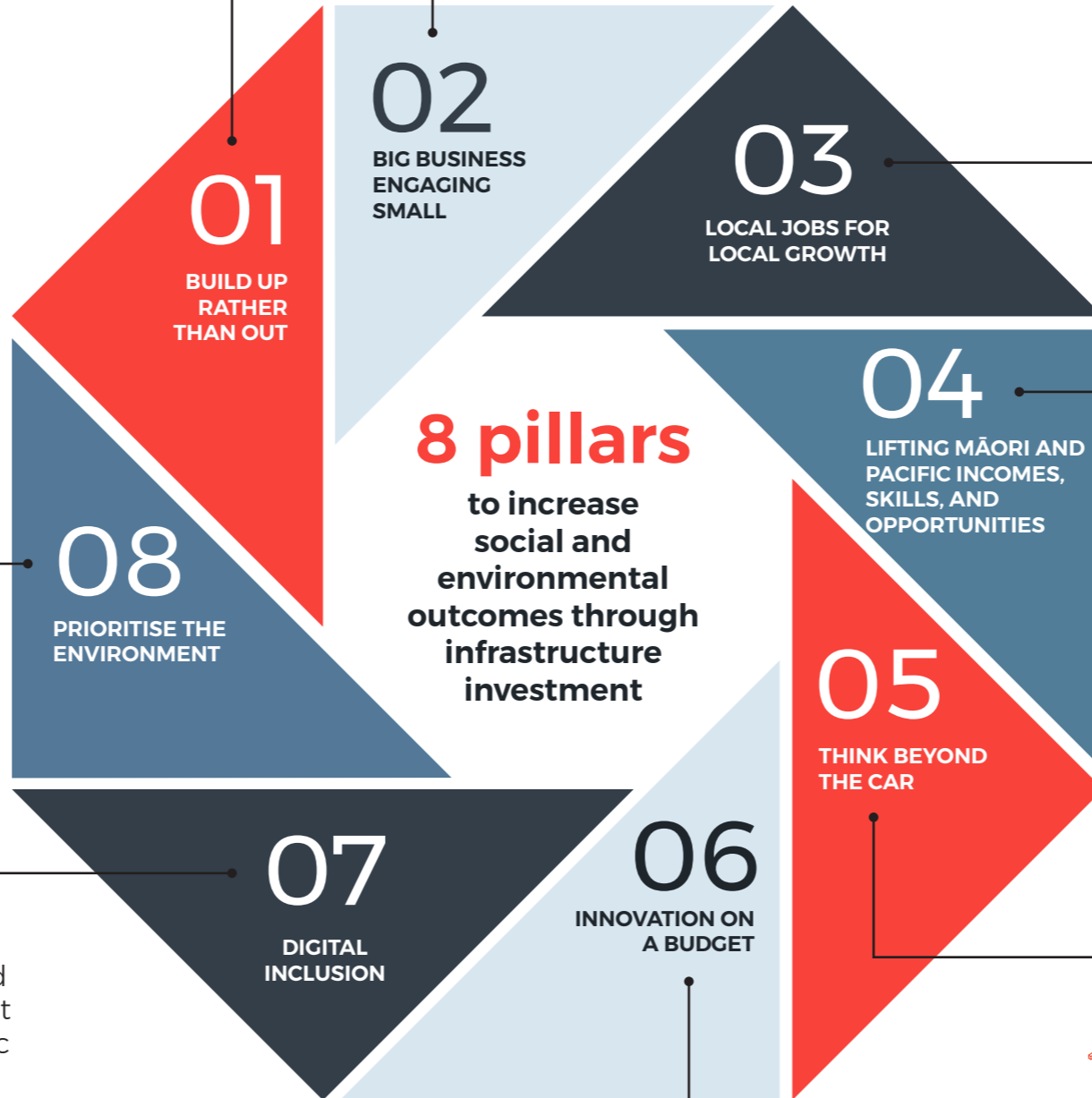
Meaningful carbon reduction and measurement into the planning and delivery of projects is needed so that we have an environment that delivers better productivity with reduced emissions and better health outcomes.



Shovel ready projects that align to the Te Tiriti O Waitangi enhance access to employment opportunities for Maori and Pasifika.



Investment in high-quality public transport enables everyone including lower income New Zealanders, the disabled, the young, and the elderly to access public amenities with the same or better ease than those who are able to drive.



**8 pillars**  
to increase  
social and  
environmental  
outcomes through  
infrastructure  
investment



For people who cannot afford internet access, it is important there is access through public amenities such as libraries.



Tactical urbanism delivers temporary changes to the built environment by testing and piloting projects to help demonstrate their value to a community, without a big investment up front.