



Local Authority Smart City Services



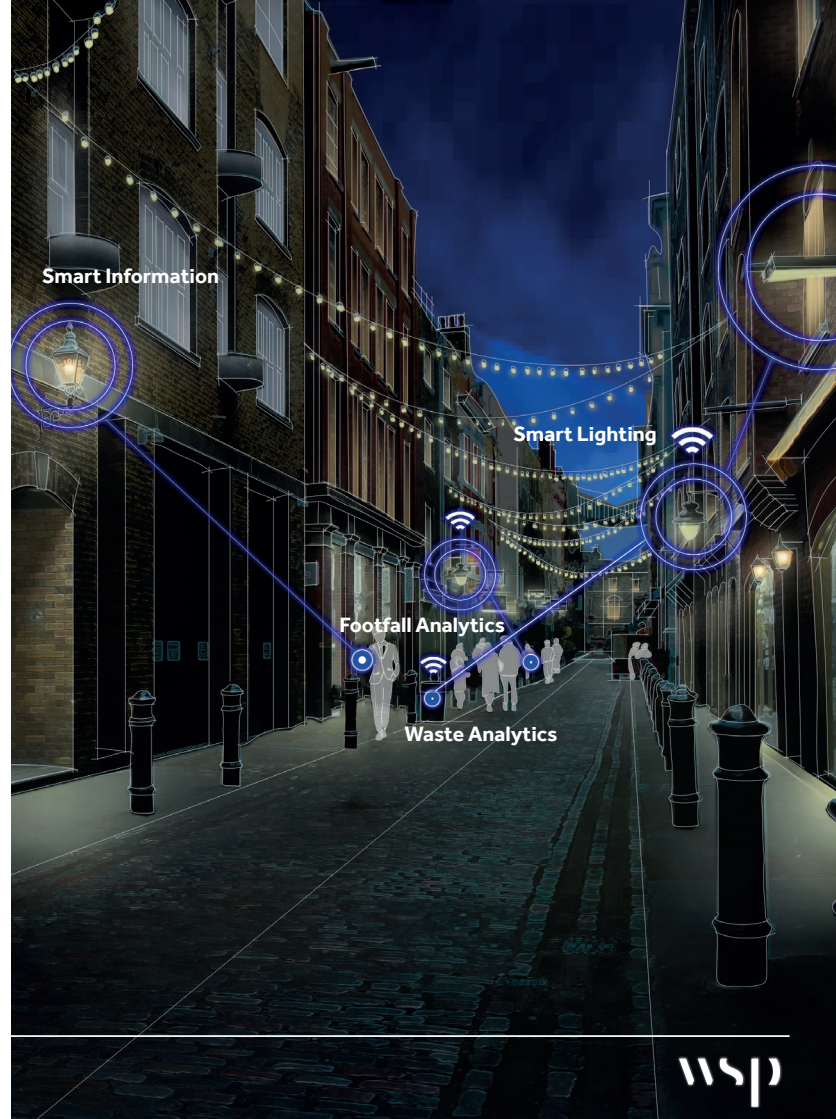
## Our Approach

---

There are major opportunities for public authorities to improve their services through the integration of electronic data collection sensors to supply information to manage assets, resources and most of all their revenue budgets efficiently and responsibly.

The network of sensors collects and transmits real time information that help authorities monitor and develop strategies to focus their core highway services to where they are needed. These sensors monitor a range of factors, from traffic, to air quality, gully emptying, the monitoring of traffic congestion and even the tracking of available parking spaces.

WSP recognises that Smart Cities is a wide-ranging topic, therefore our approach looks to address the subject in bit sized chunks, focusing on the **Connected Public Services** to increase operational efficiency, share information with the public and improve both the quality of government services and citizen welfare.



## WSP Smart Cities Strategy

---

Our team has an in-depth knowledge of how technology is facilitating the **SMART city revolution**. We develop **creative, comprehensive and sustainable engineering solutions** for a future where society can thrive.

Equipped with **National and International knowledge**, world class talent and proactive leadership, we plan, design, manage and engineer **long lasting, impactful solutions** to uniquely complex solutions.

We have extensive experience working for a range of Local Authorities **identifying our client challenges and priorities** to see how **technology** can support achieving desired operational outcomes and near-term returns on investments. Our team help our clients with **real-world application of Smart Cities Technology**.

We are a leader in preparing invest to save business cases and therefore, assist in the development of an invest to **save business cases** for connected services. We provide advice and expertise on **systems and technologies** that can serve services, review the costs of development vs. current service costs and build a sustainable investment programme based upon capital investments and defined playback periods.

**Services include** identifying client challenges to see how technology can support achieving desired outcomes. The preparation of return on investment business cases and helping with the implementation of Smart Cities Technology.

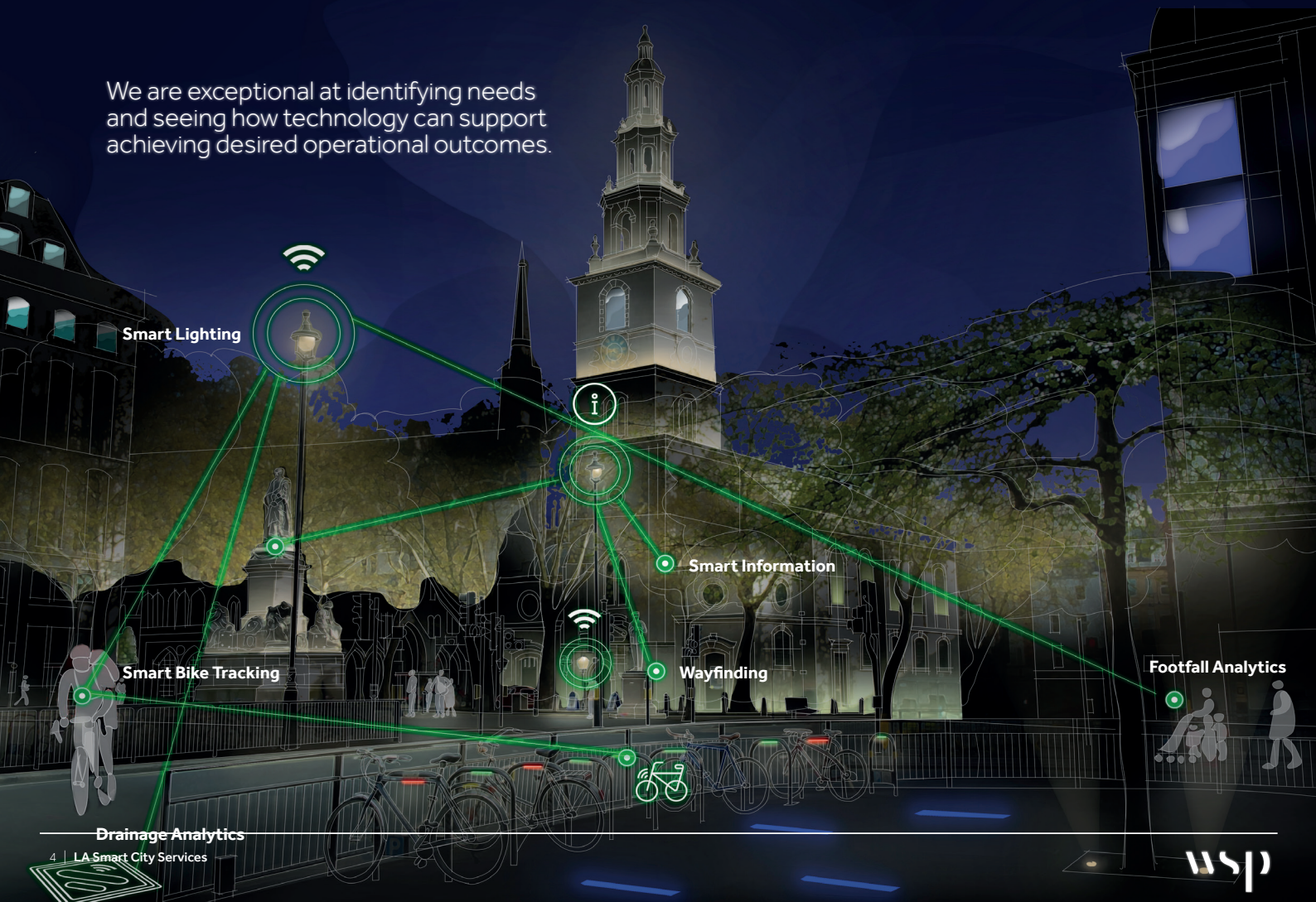
### An Overview of the services we provide:

- Consultation
- Research & Innovation
- Preparing of Business Cases
- Strategy & Policy Development
- Implementation & Delivery into Operation
- Design & Specification





We are exceptional at identifying needs and seeing how technology can support achieving desired operational outcomes.



## Smart Cities - Connected Public Services

WSP are working across numerous Local Authorities to provide a range of services associated with Smart Cities, assisting with Connected Public Services. We cover a range of services including;



**Adaptive Lighting** Where the lighting levels are adjusted to suit the traffic flows bringing energy, carbon and maintenance savings.



**Waste Analytic Systems** Smart bin sensors attached to the wheelie bins that identifies when bins are full or overflowing as well as when they are emptied.



**Smart Drainage** Collecting data to reveal the fill rate. Using this data model, the engineering team can ensure they arrive to empty the right drains at the right time.



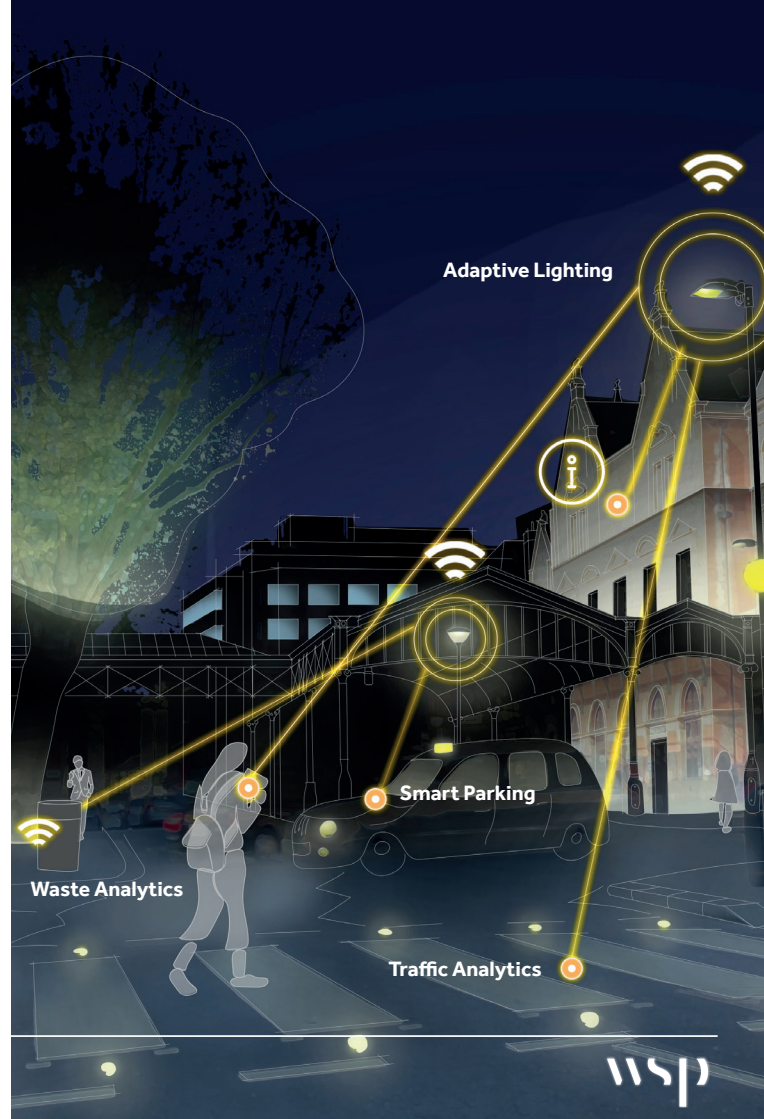
**Smart Parking** Monitoring of real-time availability of parking and advises users of its existence improving traffic flow, reducing fuel wastage, congestion and pollution.

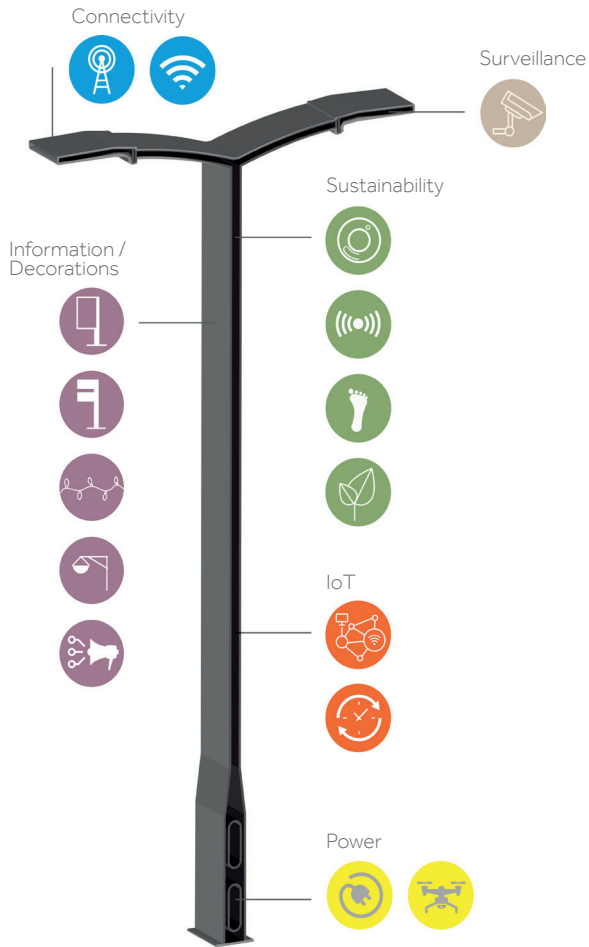


**Traffic Analytics** The ability to capture traffic volume and footfall.



**Electric Vehicle Chargers (EV)** Integrating EVs into lighting columns will enable any EV driver to simply pull up to a charge-point.





## The Humble Lighting Column

The lighting columns not only act as sources of illumination but can also act as information hubs to monitor and connect services delivered by the authority. It is important that these columns are considered as minor structures and assessed when any attachments are considered to ensure that the column is not overloaded.

Lighting columns not only act as sources of illumination but can also act as information hubs to monitor and connect services delivered by the authorities and also includes how columns may be modified to facilitate further attachment's, electrical connections and modifications without fundamentally affecting the structural capacity of the column.



**LA Smart City Services**

Lara Jiad BEng(Hons), CEng, MIET

Lara.Jiad@wsp.com  
+44 78 8005 5543

WSP House  
70 Chancery Lane  
London  
WC2A 1AF

WSP.com

