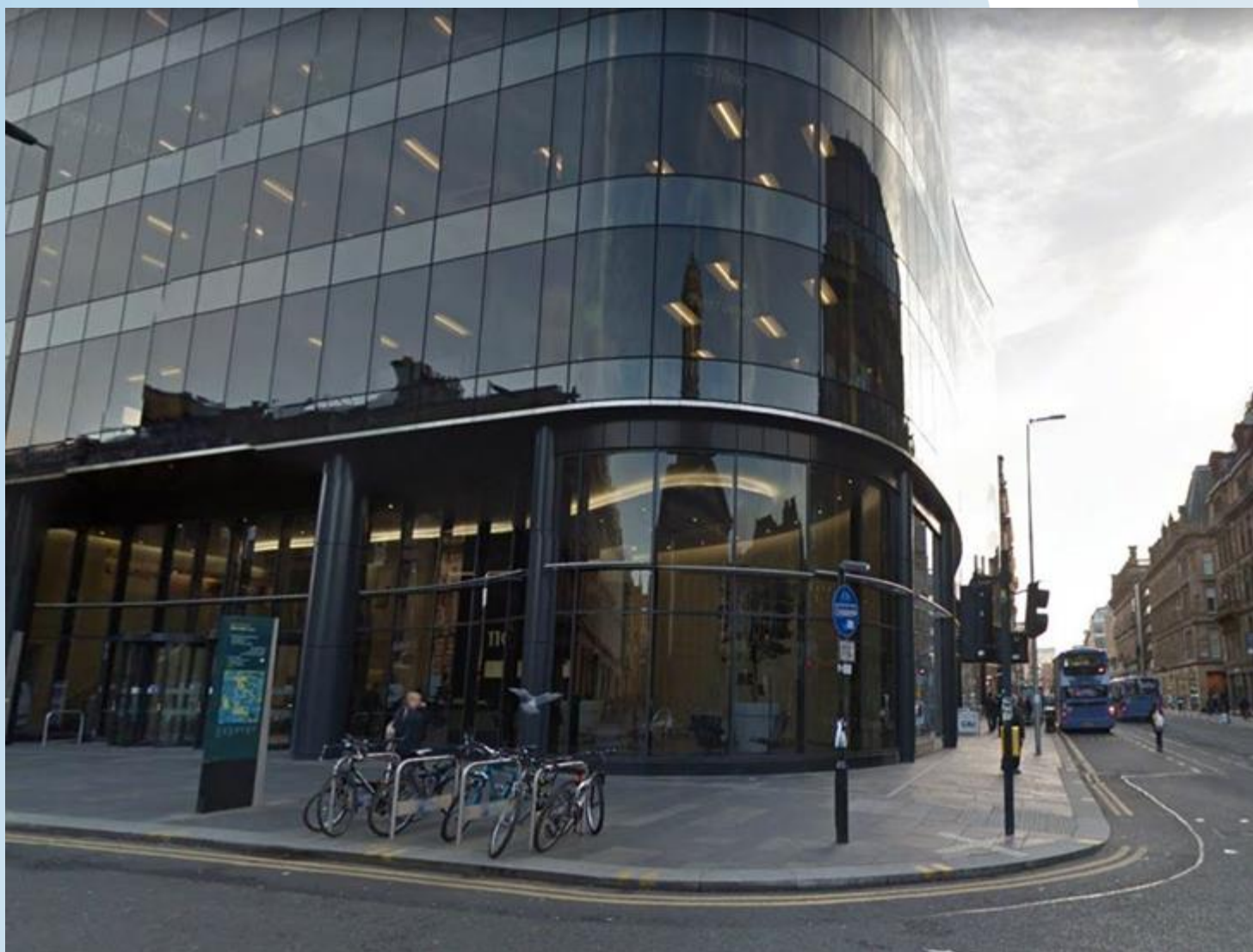


## WSP UK OFFICE GUIDE – GLASGOW



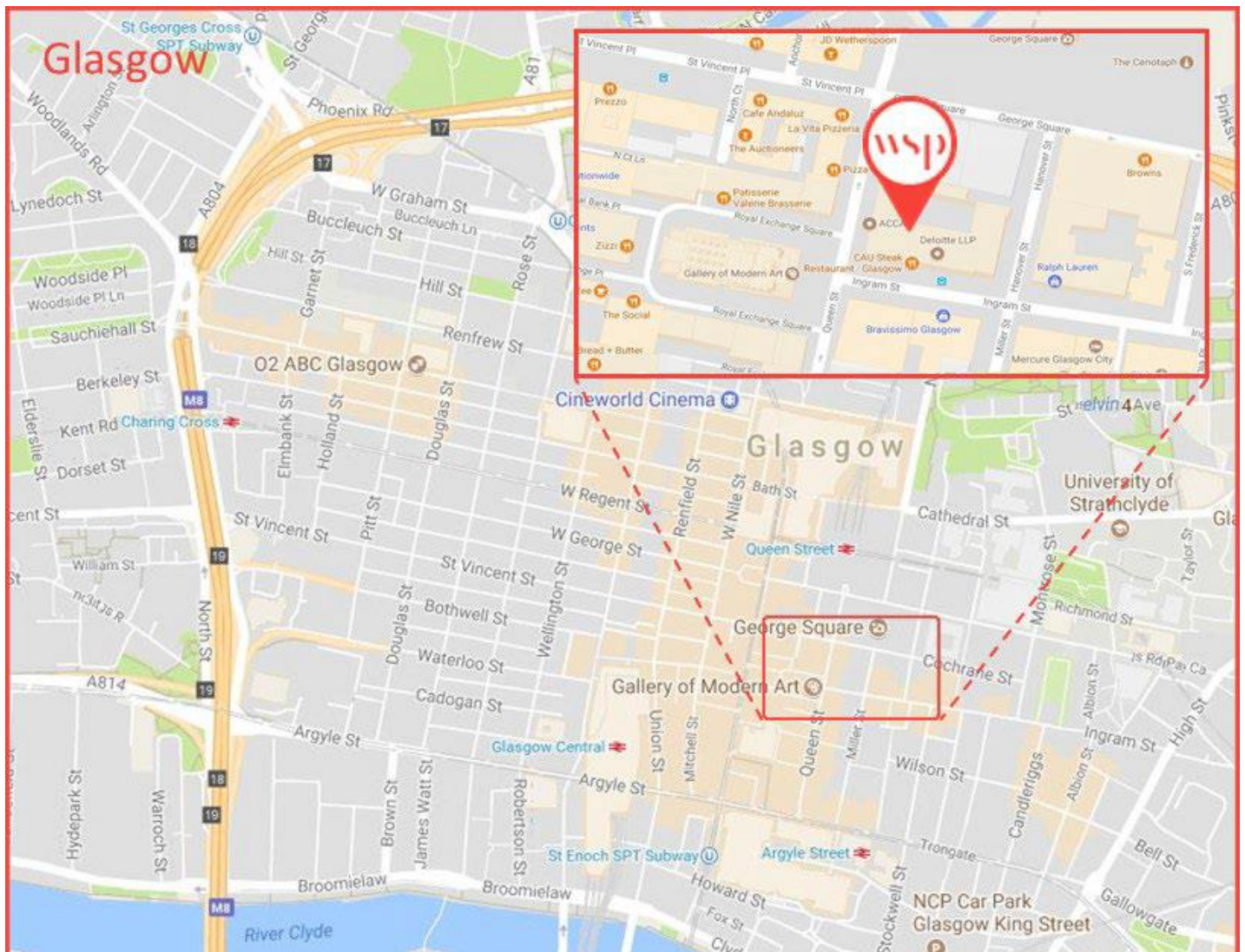
## WELCOME TO THE GLASGOW OFFICE

We are delighted to be welcoming you to the Glasgow office of WSP.

110 Queen Street  
Glasgow  
G1 3BX

Tel: 0141 429 3555  
Fax: 0141 429 3666

### Location Map



## TRAVELLING TO GLASGOW

### By Car

Please be aware, that as the office is in the city centre, we encourage the use of public transport. There is a one-way system that operates in the city centre of Glasgow, and we would advise that the driver plans their journey carefully beforehand.

Please note there are no parking facilities at the office and there are a limited number of spaces in the surrounding area. Should you wish to travel by car, please note the nearest car park is Buchanan Galleries.

#### M8 (from East/South/North)

On the M8 at Junction 16, take the exit towards A81 Aberfoyle/George Square. On entering the slip road take the next slip road bearing left signposted George Square. At the traffic lights turn left onto Dobbie's Loan/A804, at the next set of traffic lights turn right down North Hanover Street. At the second set of traffic lights turn right onto Killermont Street and after 100 metres turn left and enter the Buchanan Galleries car park entrance.

#### M8 (from West)

On the M8 at Junction 15, take the A803 exit signposted Springburn A803 and keep turning left on the slip road to bring you to the T junction at Baird Street/A804. Turn Right at the junction, follow the A804 and continue heading for George Square. Carry straight on through two sets of traffic lights bringing you down North Hanover Street and at the third set of traffic lights turn right onto Killermont Street. After 100 metres turn left and enter the Buchanan Galleries car park entrance.

### Parking

It is Company policy to reverse park in all our office parking facilities, where practicable. Where parking spaces are adjacent to pedestrian walkways or 'safeways,' then please ensure that your vehicle does not overhang or impede the walkway. Visitors must be advised of this policy.

### Parking Arrangements

There is no parking provision for general use at the building. Use one of the park and Ride facilities that are located next to underground stations. Please note that the Park and Ride facilities include the Glasgow underground.

#### Park and Ride

Bridge Street Underground (south of city centre)

Park and Ride – Kelvinbridge Underground (west of city centre)

Park and Ride - Shields Road Underground (southwest of city centre)

These are much cheaper than using a city center car park. The cost of parking (approximately £5 per day) includes a day ticket for the underground system. More details of park and ride facilities can be found at <http://www.spt.co.uk/park-ride/>

#### City Centre Car Parks

NCP – Mitchell Street, Glasgow

NCP – Montrose Street, Glasgow

NCP – The Glasshouse, Glassford Street,  
Glasgow Buchanan Galleries

St Enoch Centre

Please note that car parks closer to the city centre will be busier with associated peak shopping times.

#### From Buchanan Galleries Car Park to the Office (on foot)

Head south on North Hanover Street towards Cathedral Street. Diagonally cross George Square to your right. Turn left onto Queen Street.

### By Train

The office is very well served by train stations, being around a 5 minute walk from the main-line and suburban train stations at Glasgow Central, Queen Street, and Argyle Street.

### By Bus

The main Bus Terminus for Glasgow is located at Buchanan Street and is an approximate 10 minute walk from the office. Please note that, although this is where the Express Bus from Glasgow Airport terminates, there are nearby stops in George Square and adjacent streets. There are numerous options to travel by bus to the office from the suburbs, and reference should be made to the appropriate service providers' website for further details.

### By Underground

The nearest Underground station is Buchanan Street, with the St Enoch Station being nearby as well.

### By Plane

Glasgow International Airport is 10 miles from the city centre and is well served by express bus to Buchanan Street, or taxi. The airport 500 express bus stops outside the 9 George Square and runs every 10 minutes. The single fare is circa £8.

### By Bicycle/Scooter

#### Queen Street

Located in the office basement car park are cycle racks which can accommodate up to 60 bicycles. The racks will be allocated on a first come, first served basis.

The only access for cyclists to bring bicycles into the building is through the car park entrance. All lifts can be used for access to the floors once the cycle has been stored.

### By Taxi

There are a number of taxis ranks near to the office, one on George Square, but if you require assistance in booking a taxi, please contact a member of the Administration Team.