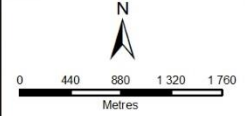


BIO THERM ENERGY
SENDAWO LOCALITY

- Legend**
- Mookodi Magopela line
 - Existing Power lines
 - Existing roads
 - Mookodi substation
 - ▭ Development Area
 - 132kV PL routes**
 - Option 1
 - Option 2
 - Onsite SS alternatives**
 - Onsite SS alternative 1
 - Onsite SS alternative 2
 - Proposed laydown areas**
 - Laydown area alternative 1
 - Laydown area alternative 2
 - Grid corridor options**
 - ▨ Option 1
 - ▨ Option 2
 - BESS proposed areas**
 - BESS Alternative 1
 - BESS Alternative 2



DISCLAIMER
The information in this figure was derived from various digital databases available to WSP Environmental Pty Ltd. All information is provided "as is" and it must be acknowledged that data, information, and figures are not intended to constitute any representation, warranty, or advice. WSP Environmental Pty Ltd cannot accept any responsibility for errors or omissions or for any loss or damage that may be caused by reliance on the information in this figure. There are no warranties, expressed or implied, as to the use of this information, including the accuracy, completeness, or fitness for a particular purpose. Acceptance of any errors will be appreciated.

wsp
WSP GROUP AFRICA (PTY) LTD
BUILDING C, INGHITSBROOD,
10 BLOANE STREET, SENDAWO,
PO BOX 5989, SENDAWO, 1122, RSA
Tel: +27 (0)11 961 1366, Fax: +27 (0)11 961 1368, email: info@wspgroup.co.za

SERVICE LAYER CREDITS: SOURCES: ESRI, HERE, GARMIN, UGS, INTERMAP, INCREMENT P, NRCAN, ESRI JAPAN, METI, ESRI CHINA/HONG KONG, ESRI KOREA, ESRI (THAILAND), NGCC, (C) OPENSTREETMAP CONTRIBUTORS, AND THE GIS USER COMMUNITY

COORDINATE SYSTEM: GCS WGS 1984

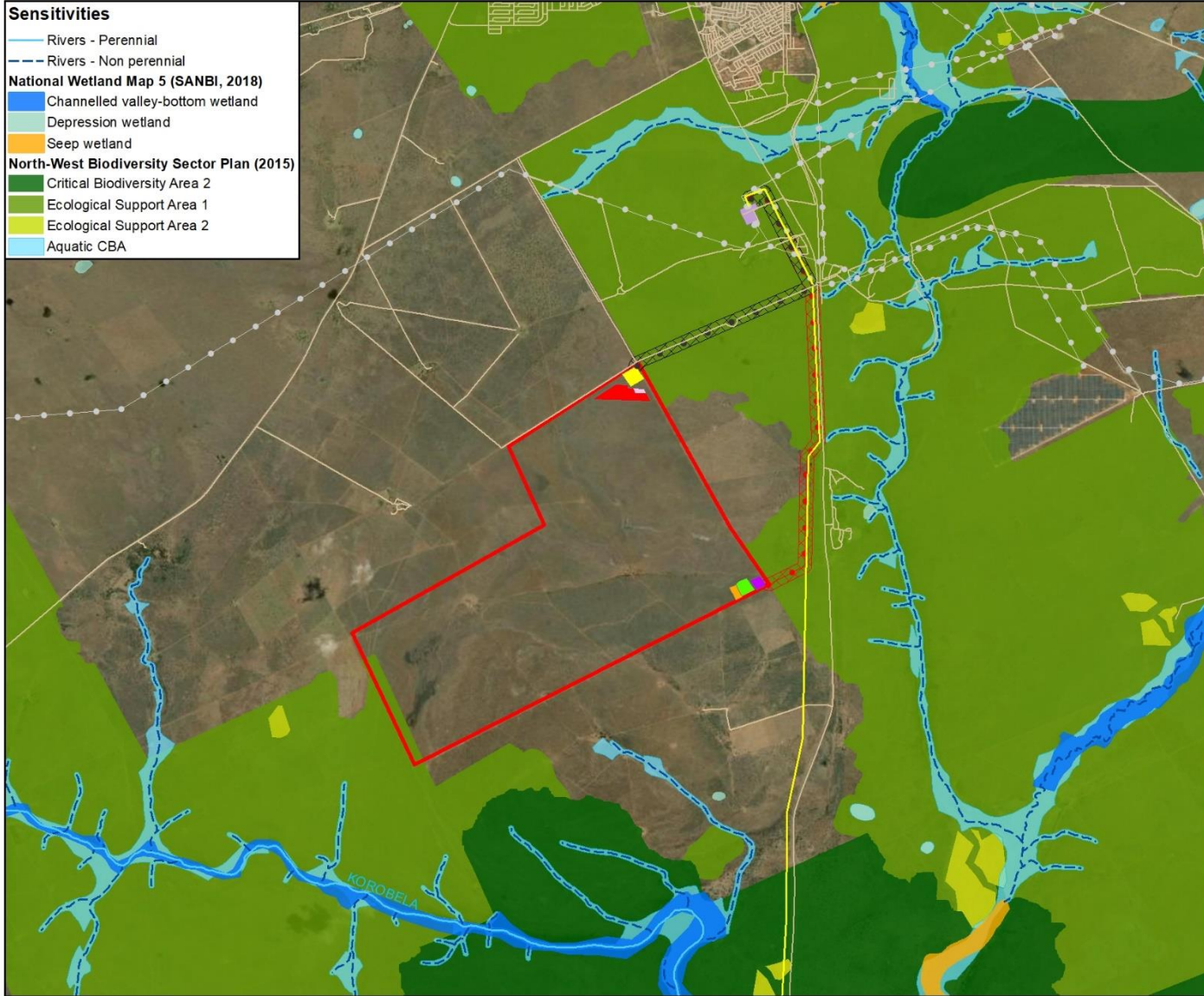
PROJECT TITLE:
PROPOSED SENDAWO 132 KV OVERHEAD POWERLINE AND ASSOCIATED UP TO 153 MWh SENDAWO BATTERY ENERGY STORAGE SYSTEM AND SUBSTATION

SCALE: 1:50 000 DRAWN BY: JN
DATE: 2023/04/14 REVIEWED BY: JP

FIGURE NO: PROJECT NO: 41102968 REV:

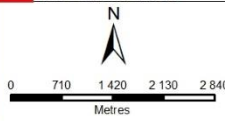
© COPYRIGHT RESERVED
The content of this document is privileged and confidential and may not be disclosed or reproduced without the written authorization of the author, being "WSP Environmental (Pty) Ltd"

- Sensitivities**
- Rivers - Perennial
 - - - Rivers - Non perennial
- National Wetland Map 5 (SANBI, 2018)**
- Channelled valley-bottom wetland
 - Depression wetland
 - Seep wetland
- North-West Biodiversity Sector Plan (2015)**
- Critical Biodiversity Area 2
 - Ecological Support Area 1
 - Ecological Support Area 2
 - Aquatic CBA



BIO THERM ENERGY
SENDAWO SENSITIVITY

- Legend**
- Mookodi Magopela line
 - Existing Power lines
 - Existing roads
 - 132kV PL routes
 - Option 1
 - Option 2
 - Mookodi substation
 - Onsite SS alternatives
 - Onsite SS alternative 1
 - Onsite SS alternative 2
 - Proposed laydown areas
 - Laydown area alternative 1
 - Laydown area alternative 2
 - Grid corridor options
 - Option 1
 - Option 2
 - Development Area
 - BESS proposed areas
 - BESS Alternative 1
 - BESS Alternative 2



DISCLAIMER
The information in this figure was derived from various digital databases available in WSP Environmental (Pty) Ltd. All information is provided 'as is' and it must be acknowledged that data, information, and materials provided are in accordance with the accuracy, completeness and quality of the data sources. WSP Environmental (Pty) Ltd. cannot accept any responsibility for errors, omissions, or inaccuracies in any data not being directly responsible for the production of this information. There are no warranties, expressed or implied, as to the use of this information, including the accuracy, completeness or fitness for a particular purpose. Reproduction of any items will be appreciated.

wsp
WSP GROUP AFRICA (PTY) LTD
BUILDING C, INDIAN BRIDGE,
10 BLOOMING STREET, SENDAWO,
PO BOX 5989, BLOEMFONTEIN, 9601, RSA
Tel: +27 (0)11 591 1365, Fax: +27 (0)11 591 1366, www.wspgroup.co.za

SERVICE LAYER CREDITS: SOURCE: ESRI, MAXAR, EARTHSTAR GEOGRAPHICS, AND THE GIS USER COMMUNITY.

COORDINATE SYSTEM: GCS_WGS_1984

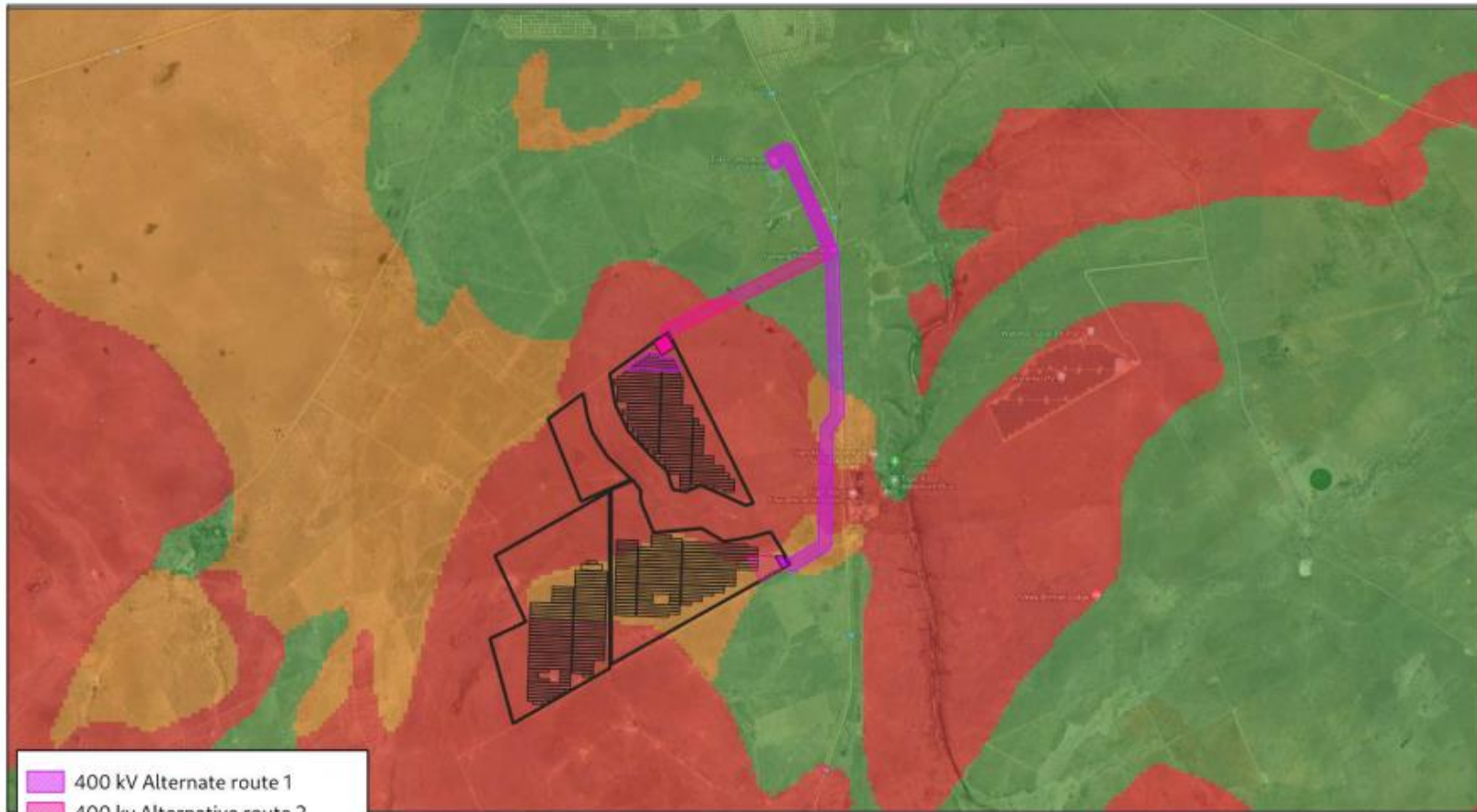
PROJECT TITLE:
PROPOSED SENDAWO 132 KV OVERHEAD POWERLINE AND ASSOCIATED UP TO 153 MWh SENDAWO BATTERY ENERGY STORAGE SYSTEM AND SUBSTATION

SCALE: 1:80 000 DRAWN BY: JN

DATE: 2023/04/13 REVIEWED BY: JP

FIGURE NO:	PROJECT NO: 41102968	REV:
------------	----------------------	------

© COPYRIGHT RESERVED
The content of this document is privileged and confidential and may not be disclosed or reproduced without the written consent of the author, being "WSP Environmental (Pty) Ltd".



- 400 kV Alternate route 1
- 400 kv Alternative route 2
- North Collector Substation
- South Collector Substation
- BESS Alternative 1
- BESS Alternative 2
- PV Array Layout
- Sendawo PV Development Area



RED	Very high
ORANGE	High
GREEN	Moderate
BLUE	Low
GREY	Insignificant/zero
WHITE	Unknown



CTS HERITAGE