



## AGENDA & MEETING NOTES

<b>PROJECT NUMBER</b>	41104282	<b>MEETING DATE</b>	24 April 2024
<b>PROJECT NAME</b>	132kV Electrical Grid Infrastructure for the Igolide Wind Energy Facility	<b>VENUE</b>	MS Teams
<b>CLIENT</b>	ENERTRAG South Africa (Pty) Ltd (ENERTRAG) SPV - Igolide Wind (Pty) Ltd	<b>RECORDED BY</b>	Matilda Mbazo
<b>MEETING SUBJECT</b>	Pre-application meeting with the Gauteng Department of Agriculture and Rural Development (GDARD)		

<b>PRESENT</b>	Avhaphani Joshua Mahada (AM) - GDARD; Tendani Rambuda (TR) - GDARD; Caroline Sithi (CS) - GDARD; Teboho Leku (TL) - GDARD; Erick Moletsane (EM) - GDARD; Livhuwani Demana (LD) – GDARD; Thivhadini Netshiozwi (TN) – GDARD; Zinzi Sithole (ZS) – ENERTRAG; Nkhensani Masondo (NM) - ENERTRAG; Phunge Muwanwa (PM) – ENERTRAG; Ashlea Strong (AS) – WSP; and Matilda Mbazo (MM) – WSP.
<b>APOLOGIES</b>	Nothando Ngwenya (NN) - GDARD; Thabane Sibeko (TS) - GDARD; Hellen Sithole (HS) – GDARD; and Jashmika Maharaj (JMJ) – WSP.
<b>DISTRIBUTION</b>	Meeting Attendees
<b>CONFIDENTIALITY</b>	<b>Confidential</b>

## MEETING NOTES

ITEM	SUBJECT	ACTION	DUE
<b>NOTE</b>			
These notes constitute a summary of the key discussion points and decisions made during the progress discussion. They are not intended to reflect the exact discussions held.			
<b>1. WELCOME AND INTRODUCTION</b>			
	<p><b>AS</b> opened the meeting by welcoming everyone and allowed GDARD, ENERTRAG and WSP to introduce themselves and state their role in the project.</p> <p><b>AS</b> proceeded to present the meeting's agenda via a slide presentation.</p> <p>The presentation is included in <b>Appendix A</b>.</p>	N/A	N/A
<b>2. PROJECT BACKGROUND</b>			
	<p><b>AS</b> began to present the on the project background, and the rightful competent authority (CA) as GDARD. <b>AS</b> proceeded to enquire whether GDARD can confirm to being the rightful CA for the Igolide 132kV Grid Connection Project.</p> <p><b>TR</b> requested time to allow GDARD to thoroughly investigate their status as CA. Following this investigation, GDARD will promptly communicate with WSP regarding the outcome.</p> <p><b>AS</b> further clarified that this information is sourced from the Department of Forestry, Fisheries, and the Environment (DFFE), as they transition projects to the respective provinces. Consequently, GDARD is encouraged to verify this information directly with the DFFE for confirmation.</p> <p><b>AS</b> proceeded to present on the project background, location, and the applicant (Igolide Wind (Pty) Ltd). She added that the powerline will be located in the Central Corridor of the Strategic Transmission Corridors.</p> <p><b>AS</b> then showed the project's locality map and stated that the site is located northeast of Fochville in the Merafong City Local Municipality. She also illustrated that the powerline will cross over the N12 national road.</p> <p><b>AS</b> continued to present a detailed map of the proposed powerline. She highlighted that half of the substation (the Independent Power Producer (IPP) portion) is already authorised and approved as part of the WEF (<b>DFFE reference number: 14/12/16/3/3/2/2385</b>). The other half of the substation will be the Eskom portion which will be included in this application. She added that the proposed powerline does traverse the edge of a mining area.</p>	GDARD to confirm their status as CA with WSP.	ASAP

## MEETING NOTES

ITEM	SUBJECT	ACTION	DUE
<b>3. TYPICAL INFRASTRUCTURE</b>			
	<p><b>AS</b> proceeded to present on the typical infrastructure such as the 132 (kilovolt) kV powerline circuit, working area, gridline, switching station, termination point upgrades and access roads.</p> <p><b>TR</b> asked for more elaboration on the approved existing authorisation. He proceeded to ask if there was any formal writing to confirm that GDARD is the CA for the proposed WEF.</p> <p><b>AS</b> stated, that it has not been promulgated and there is no formal writing to confirm that, however, it has been as per DFFE's request that WSP goes to the province for grid connections and the only time the DFFE will accept the project is after the signing of a 24(3)(c) agreement. She added that this has been done for many other projects at WSP.</p> <p><b>AS</b> mentioned, that the section that has been authorised is the actual Igolide WEF that was authorised by DFFE earlier in the year of 2024. She stated that it is a small WEF, hundred (100) megawatts with ten(10) turbines.</p> <p><b>TR</b> additionally asked if ESKOM was consulted regarding the grid connection and if the South African National Roads Agency Limited (SANRAL) was also consulted regarding the cross over of the powerline at the N12.</p> <p><b>AS</b> responded that ESKOM is not the applicant, however, they are aware. She added that the IPP is responsible for obtaining the authorisation, construction and the commissioning thereof, then the Igolide WEF as the IPP will transfer the working grid connection back to ESKOM.</p> <p><b>AS</b> also responded that SANRAL will be included in the database and will be consulted through WSP during the public participation process and will additionally be consulted by the technical team from ENERTRAG.</p> <p><b>TR</b> asked if the mine will be consulted as well.</p> <p><b>ZS</b> responded that engagements with the mine, <i>Sibanye Gold</i>, have already commenced and there are no objections thus far.</p> <p><b>TL</b> asked if there are any reference made to the identified areas for the electricity transmission considering that it is in a central corridor, as there is an option for a standard registration as opposed to the Basic Assessment (BA). He additionally asked how the powerline will cross the N12.</p> <p><b>AS</b> stated, that WSP is aware of the standard registration, however, the option will be explored after the specialists' input with regards to the verified site sensitivity, therefore the BA process is tentative. She then confirmed that the powerline will cross above the N12.</p>	<p>ENERTRAG &amp; WSP to provide minutes from IAIA workshop.</p>	<p>Within 7 days of the date of the meeting</p>

## MEETING NOTES

ITEM	SUBJECT	ACTION	DUE
	<p><b>NM</b> recommended that the minutes and recordings captured by Mohammad Essop during the September 2023 workshop hosted by the International Association for Impact Assessment (IAIA) under the umbrella of the DFFE could be shared to substantiate the correspondence pertaining to the CA issue.</p> <p><b>NM</b> stated that with regards to ESKOM, ENERTRAG has a technical team that oversees submissions to ESKOM, therefore after commissioning of the proposed project ENERTRAG will undertake an amendment process and transfer the grid connection to ESKOM.</p>		
<b>4. LISTED ACTIVITIES AND DFFE SCREENING TOOL</b>			
	<p><b>AS</b> proceeded to present on the six listed activities triggered by these activities in terms of Listing Notice 1 and 3 of the Environmental Impact Assessment (EIA) Regulations (2014) (GN R. 983, as amended by GNR 327). Therefore, a BA process will be followed for the project.</p> <p><b>AS</b> continued to present the findings from the DFFE screening tool and indicated the very high and high sensitivities that might trigger a BA. She additionally presented on the specialists' studies commissioned and not commissioned.</p> <p><b>TR</b> enquired if the proposed project is on a dolomite geographical area, and if that is the case will the client or WSP submit the report to the Council of Geoscience (CoG) for comments.</p> <p><b>AS</b> stated, that there potentially could be dolomites in the area, hence a desktop geotechnical study will be commissioned.</p> <p><b>ZS</b> mentioned that when a Section 53 application is undertaken, ENERTRAG is required to include maps from the CoG therefore, the team will liaise with CoG.</p> <p><b>TR</b> added that GDARD will require the comments from CoG as part of any submission, only if there is presence of dolomite along the alignment.</p>	N/A	N/A
<b>5. PUBLIC PARTICIPATION</b>			
	<p><b>AS</b> proceeded to present on the public participation plan and the timeframes for the proposed WEF. She stated that the anticipated final submission is in August 2024.</p> <p><b>AS</b> enquired whether WSP is required to submit online or via hardcopies.</p> <p><b>TR</b> confirmed that all documents are submitted on the online portal. However, anything in regard to digital signatures or administration WSP is welcome to contact Nhlanhla Makhathini (<a href="mailto:Nhlanhla.Makhathini@gauteng.gov.za">Nhlanhla.Makhathini@gauteng.gov.za</a> (0112403052))</p>	N/A	N/A

## MEETING NOTES

ITEM	SUBJECT	ACTION	DUE
<b>4.0 CONCLUDING</b>			
	<ul style="list-style-type: none"><li>No further comments from attendees.</li><li><b>AS</b> concluded the meeting at 10h51.</li></ul>	N/A	N/A
<b>5.0 POST MEETING NOTE</b>			
	<ul style="list-style-type: none"><li><i>Unfortunately, no presentation or minutes were shared by Mohammad Essop following the September 2023 workshop hosted by the International Association for Impact Assessment (IAIA). Furthermore, All recordings and presentations are Copyright of the author and IAIA and may not be shared without prior consent.</i></li><li><i>However, in order to confirm that GDARD is the CA for this project please see the snapshot from the Presentation in <b>Appendix B</b>.</i></li><li><i>Alternatively, please contact Mr Muhammad Essop at the DFFE at the following contact details: Tel: (063) 684 3597 Email: MEssop@dffe.gov.za</i></li></ul>	-	-

Approved:

---

GDARD

---

WSP

---

ENERTRAG

## **APPENDIX A – PRESENTATION**

---



1

wsp

## Introductions

Applicant	<b>Igolide WEF (Pty) Ltd</b> Zinzi Sithole Nkhensani Masondo
EAP	<b>WSP Group Africa (Pty) Ltd</b> Ashlea Strong Jashmika Maharaj
Authority	<b>Gauteng Department of Agricultural, Rural Development and Environment (GDARD)</b> Erick Moletsane Hellen Sithole Thivhadini Netshiozwi Nothando Ngwenya Livhuwani Demana Thabanesibeko Thabane

2

2



## Agenda

- 1 Introduction  
Introductions
- 2 Overview of Project  
Project Background  
Typical Infrastructure  
Key Considerations
- 3 Permitting Processes  
Environmental Authorisation Process  
Listed Activities  
DFFE Screening Tool  
Specialist Studies
- 4 Public Participation Plan
- 5 Timeframes
- 6 Discussion  
Questions and Comments

3

3



Introduction

## Competent Authority


This project is the development of a grid connection project for the Igolide Wind Energy Facility (WEF) in the Gauteng Province.

- o Gauteng Department of Agricultural, Rural Development and Environment (GDARD) is therefore deemed to be the Competent Authority

4

4






Overview of the Project

Background

ENERTRAG South Africa, under the Special Purpose Vehicle, Igolide Wind (Pty) Ltd, is proposing to construct the Igolide Wind Energy Facility (WEF) (capacity of up to 100MW) near Fochville in the Gauteng Province (Authorised). The project will require the construction of the a 132kV grid connection and associated infrastructure (current application).

The entire extent of the Project is located within the Central Corridor of the Strategic Transmission Corridors.

5

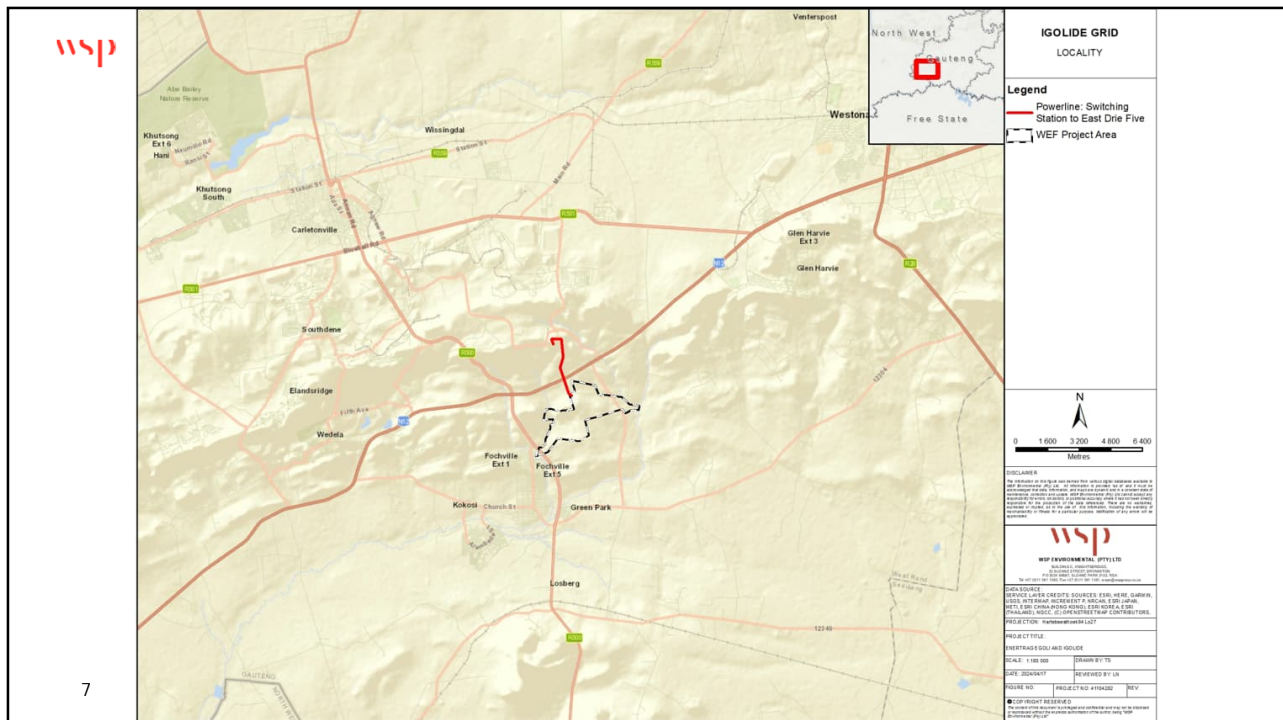


Overview of the Project

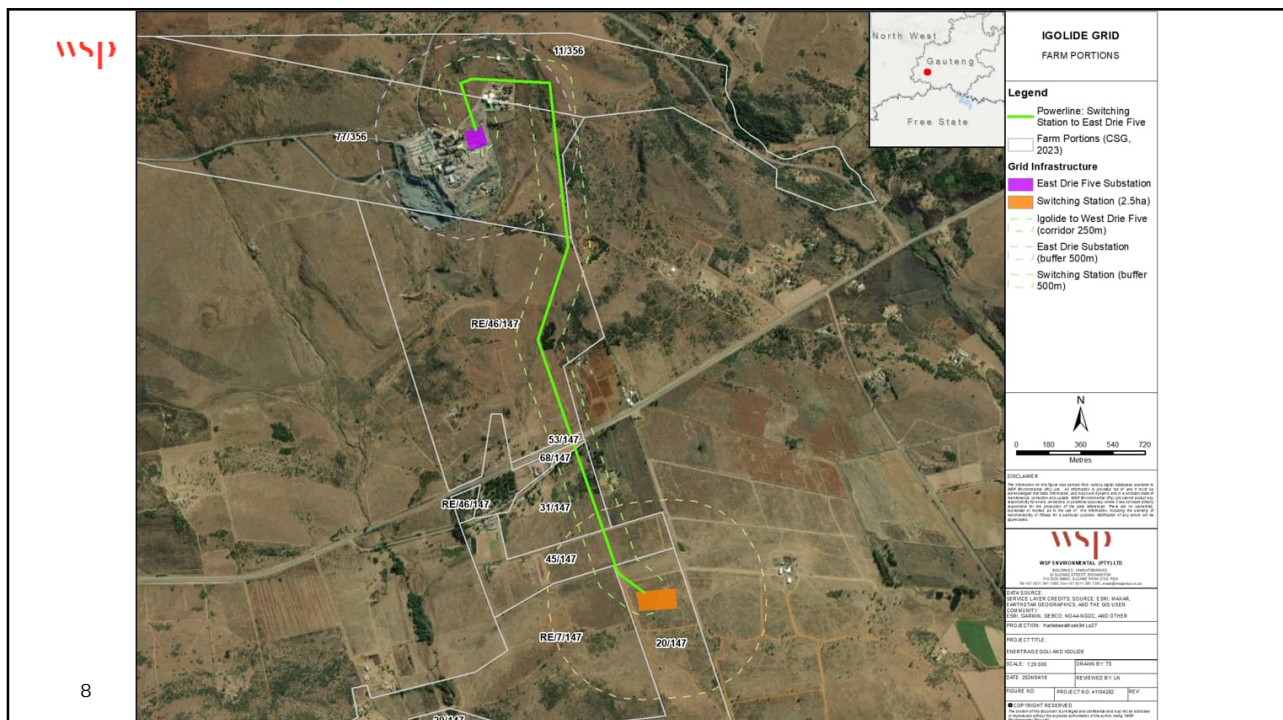
Location

	Igolide WEF
Province	Gauteng
District Municipality	West Rand District Municipality
Local Municipality	Merafong City Local Municipality
Farms	<ul style="list-style-type: none"><li>▪ Portion 20 of Kraalkop 147 IQ</li><li>▪ Portion 31 of Kraalkop 147 IQ</li><li>▪ Portion 45 of Kraalkop 147 IQ</li><li>▪ Portion 46 of Kraalkop 147 IQ</li><li>▪ Portion 53 of Kraalkop 147 IQ</li><li>▪ Portion 68 of Kraalkop 147 IQ</li><li>▪ Portion 11 of Leeuwpoot 356 IQ</li><li>▪ Portion 77 of Leeuwpoot 356 IQ</li></ul>

6



7



8



#### Overview of the Project

## Typical Infrastructure

The Igolide WEF 132kV Grid Infrastructure will contain the following typical infrastructure:

- 132kV powerline (single or double circuit):
  - Intermediate self-supporting monopole;
  - Inline or angle-strain self-supporting monopole;
  - Suspension self-supporting monopole;
  - Triple pole structure;
  - Steel lattice structure; or
  - Similar powerline design at 132kV specification.
  - The above designs may require anchors with guy-wires or be anchorless. For up to 132kV structures, concrete foundation sizes may vary depending on design type up to 80m<sup>2</sup>, with depths reaching up to 3.5m typically in a rectangular 'pad' shape.
- A working area of approximately 100m x 100m is needed for each of the proposed structures to be constructed.
- A 250m wide corridor (125m on either side of the centre line) has been identified for the assessment and micro-siting of the powerline to avoid sensitivities and ensure technical feasibility.
- Gridline length: approximately 4km
- Height of powerline: up to 40m
- Width of gridline servitude: 32m

9

9




#### Overview of the Project

## Typical Infrastructure

- Switching Station
  - Located adjacent to the 33/132kV on-site IPP substation
  - Capacity: 132kV
  - Standard substation electrical equipment, including, but not limited to:
    - busbars, control building, telecommunication infrastructure, office area, operation and control room, workshop and storage area, feeder bays, stringer strain brems, insulators, arrestors, relays, capacitor banks, batteries, wave trappers, switchyard, metering and indication instruments, equipment for carrier current, surge protection and outgoing feeders, as may be required.
  - Associated infrastructure, including, but not limited to
    - lighting, fencing (~2m high), gating, parking area, and buildings required for operation (ablutions, office, workshop and control room, concrete batching plant (if required), waste storage/disposal and storerooms).
- Termination point upgrades:
  - Upgrades to the existing East Drie Five Substation will also be required, including possible expansion within the yard, where required, with a footprint of up to 4ha.
- Access roads:
  - Between 4 – 6m wide (This track will then be utilised for maintenance during operation)
  - Permanent access roads to and within the substation, up to 8m wide, will be established

10

10



Permitting Processes


## Environmental Authorisation Applications

- Basic Assessment Process:
  - Basic Assessment for the 132kV Grid Connection

It should be noted that the Igolide WEF has received an Environmental Authorisation (EA) (REF: 14/12/16/3/3/2/2385)

11

11



Permitting Processes

## Listed Activities – Listing Notice 1

Listed Activity	Description of Project Activity
<b>Activity 11:</b> The development of facilities or infrastructure for the transmission and distribution of electricity— (i) outside urban areas or industrial complexes with a capacity of more than 33 but less than 275 kilovolts	The project will include grid infrastructure of up to 132 kV overhead/underground transmission lines. The transmission lines are outside of the urban edge.
<b>Activity 12:</b> The development of— (ii) infrastructure or structures with a physical footprint of 100 square metres or more; where such development occurs— (a) within a watercourse; or (c) if no development setback exists, within 32 metres of a watercourse, measured from the edge of a watercourse	The powerlines may require the erection of pylons, which may require a total construction area of approximately 100m <sup>2</sup> . There is the potential that a pylon or access road will transverse a watercourse (or drainage line).
<b>Activity 19:</b> The infilling or depositing of any material of more than 10 cubic metres into, or the dredging, excavation, removal or moving of soil, sand, shells, shell grit, pebbles or rock of more than 10 cubic metres from a watercourse	Internal access roads and stormwater control infrastructure, as well as electrical cabling required to connect the various components of the Facilities will collectively require the excavation, infilling or removal of soil exceeding 10m <sup>3</sup> from delineated watercourses on site.
<b>Activity 27:</b> The clearance of an area of 1 hectare or more, but less than 20 hectares of indigenous vegetation, except where such clearance of indigenous vegetation is required for: (i) the undertaking of a linear activity; or (ii) maintenance purposes undertaken in accordance with a maintenance management plan	The development envelope of these facilities will be wholly transformed by the 132kV powerlines or other supporting infrastructure (including the substation, Battery Facility, cables, etc)

12

12

## Listed Activities – Listing Notice 3

Listed Activity	Description of Project Activity
<b>Activity 12:</b> The clearance of an area of 300 square metres or more of indigenous vegetation except where such clearance of indigenous vegetation is required for maintenance purposes undertaken in accordance with a maintenance management plan In f. Mpumalanga ii. Within critical biodiversity areas identified in bioregional plans;	The project and the supporting grid infrastructure will utilise a footprint of more than 300 m <sup>2</sup> and traverses a Critical Biodiversity Area.
<b>Activity 14:</b> The development of— (i) dams or weirs, where the dam or weir, including infrastructure and water surface area exceeds 10 square metres; or (ii) infrastructure or structures with a Physical footprint of 10 Square metres or more; where such development occurs— (a) within a watercourse; (b) in front of a development setback; or (c) if no development setback has been adopted, within 32 metres of a watercourse, measured from the edge of a watercourse; In f. Mpumalanga: ii. Outside urban areas: (ff) Critical biodiversity areas or ecosystem service areas as identified in systematic biodiversity plans adopted by the competent authority or in bioregional plans;	The powerlines will require the erection pylons, which may require a construction area of approximately 100m <sup>2</sup> . There is the potential that a pylon or access road will transverse a watercourse (or drainage line) in a Critical Biodiversity Area.

13

13

## DFFE Screening Tool Identified Sensitivities – Igolide WEF 132kV Grid Connection

THEME	VERY HIGH SENSITIVITY	HIGH SENSITIVITY	MEDIUM SENSITIVITY	LOW SENSITIVITY
Agriculture Theme		X		
Animal Species Theme			X	
Aquatic Biodiversity Theme	X			
Archaeological and Cultural Heritage Theme	X			
Civil Aviation Theme		X		
Defence Theme				X
Palaeontology Theme		X		
Plant Species Theme			X	
Terrestrial Biodiversity Theme	X			

14

14

## Specialist Assessments Identified by the DFFE Screening Tool

Specialist Study	Grid infrastructure
Agricultural Impact Assessment	X
Landscape/Visual Impact Assessment	X
Archaeological and Cultural Heritage Impact Assessment	X
Palaeontology Impact Assessment	X
Terrestrial Biodiversity Impact Assessment	X
Aquatic Biodiversity Impact Assessment	X
Avian Impact Assessment	X
Civil Aviation Assessment	X
Defence Assessment	X
RFI Assessment	X
Geotechnical Assessment	X
Plant Species Assessment	X
Animal Species Assessment	X

15

15

## Specialist Studies Commissioned

Specialist Study	Comment
Soils and Agricultural Potential Assessment	A soils and agricultural assessment will be undertaken
Archaeological and Cultural Heritage Impact Assessment	An archaeological and heritage impact assessment will be undertaken
Palaeontology Impact Assessment	A palaeontological impact assessment will be undertaken
Visual Impact Assessment	A visual impact assessment will therefore be undertaken
Terrestrial Biodiversity Impact Assessment	A terrestrial biodiversity assessment will be undertaken. This assessment will include both fauna and flora aspects
Aquatic Biodiversity Impact Assessment	An aquatic biodiversity assessment will be undertaken
Avifauna Impact Assessment	An Avifauna assessment will be undertaken
★ Social Impact Assessment	A socio-economic impact assessment will be undertaken
★ Geotechnical Assessment	A geotechnical desktop assessment will be undertaken

A "★" indicates a study that will be undertaken, but has not been identified by the DFFE Screening Tool

16

16



#### Permitting Processes

### Specialist Studies NOT Commissioned

Specialist Study	Comment
Civil Aviation	The Civil Aviation Authority will be included on the project stakeholder database. They will be informed of the proposed Project, and comment will be sought. An Application for the Approval of Obstacles will also be submitted to SACAA once preferred bidder status is obtained.
Defence	The Department of Defence will be included on the project stakeholder database. They will be informed of the proposed Project, and comment will be sought.

17

17



#### Public Participation Process

### Public Participation Plan

- Formally announce project via:
  - Adverts – the advert was published on 22 June 2023 in the Carletonville Herald in English, Afrikaans and Sesotho)
  - Site notices – additional site notices will be placed
  - Existing stakeholder database will be utilised and updated
- Compilation and management of I&AP Database
- Written notification:
  - Owners and occupiers on or adjacent to the proposed project site
  - Municipality Ward Councillor
  - District Municipality
  - Relevant State Departments
- Draft Reports Review for 30 days:
  - Online on the WSP website
  - Online on a data free website
  - Hard copies placed at Fochville, Kokosi and Carletonville Libraries

18

18



#### Timeframes

## Timeframes

- Authority Timeframes
  - Authority decision making timeframe is 54 days for BA
- Key Milestones
  - Submission of Application Forms – June 2024
  - BA Reports Public Review – June 2024
  - Submission of Final BA Reports – August 2024

19

19



#### Discussion

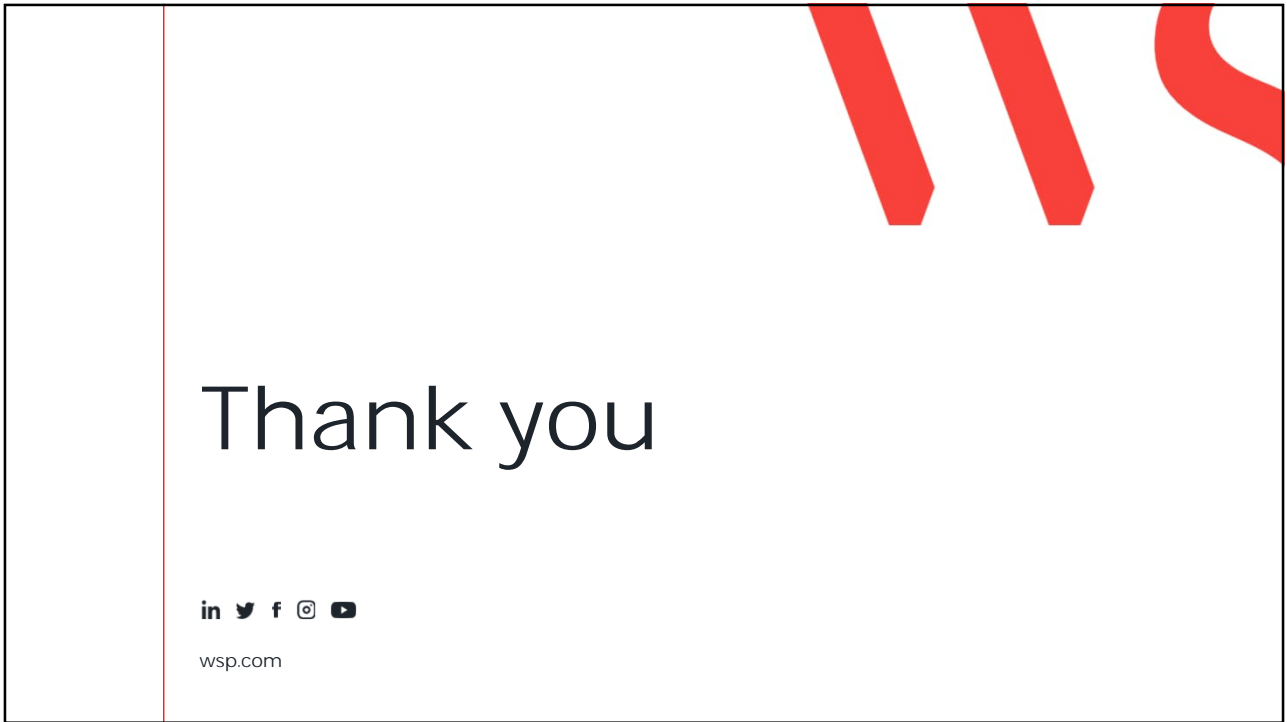
- Questions
- Way Forward

20

20







## APPENIDX B – SCREENSHOT FROM IAIA WORKSHOP HELD IN SEPTEMBER 2023

### Application forms

- When it comes to energy related applications:
- The Minister will be competent authority for the following -
  - 1) a generation facility to be bid in the DMRE bidding round which includes all associated infrastructure;
  - 2) where an application falls within the ambits of S24C(2);
  - 3) registration of the Norm and Standard where the provisions of 1 or 2 above have been met.
  - 4) an application for EA for private off-taking agreements for more than 100MW;
  - 5) all energy generation projects for private off-taking/ or bidding within the Northern Cape Province.
- The MEC responsible for environmental affairs in the relevant province will be the competent authority for the following -
  - 1) a generation facilities for private off-taking agreements (up to 100MW);
  - 2) an application for associated infrastructure submitted separately, even if the facility has been approved by the DFFE;
  - 3) registration of the Norm and Standard where the provisions of points number 1 or 2 above have been met.

Maharaj, Jashmika

**From:** Maharaj, Jashmika  
**Sent:** Tuesday, 18 June 2024 09:33  
**To:** Personal details have been redacted as required by the POPI Act  
**Cc:**  
**Subject:** RE: Pre-application meeting: 132kV Electrical Grid Infrastructure for the Igolide Wind Energy Facility - MEETING MINUTES  
**Attachments:** 41104282\_Igolide 132kV Tx\_Pre-app Meeting Minutes\_20240503\_Final.pdf  
**Importance:** High

Tracking:	Recipient	Delivery	Read
	'MOLETSANE, ERICK (GDARD)'		
	'MAKHATHINI, NHLANHLA (GDARD)'		
	Strong, Ashlea	Delivered: 2024/06/18 09:38	Read: 2024/06/18 09:35
	Mbazo, Matilda	Delivered: 2024/06/18 09:40	Read: 2024/06/18 09:35
	'SITHOLE, HELLEN (GDARD)'		
	'NETSHIOZWI, THIVHADINI (GDARD)'		
	'DEMANA, LIVHUWANI (GDARD)'		
	'NGWENYA, NOTHANDO (GDARD)'		
	'SIBEKO, THABANE (GDARD)'		
	'MAHADA, JOSHUA (GDARD)'		
	KHUMALO, ZANDILE (GDARDE)		


Good Day,

The email trail and pre-application meeting minutes refers.

The pre-application meeting for the above-mentioned project was held on the 24 April 2024 with this Department.

The Applicant and EAP urgently requests confirmation that this Department will be the Competent Authority for the proposed project.

Kind regards,



**Jashmika Maharaj**  
Senior Consultant  
T +27 11 254 4874  
M +27 81 401-8337

**From:** Maharaj, Jashmika  
**Sent:** Friday, May 3, 2024 10:50 AM  
**To:** Personal details have been redacted as required by the POPI Act

Personal details have been redacted as required by the POPI Act

**Subject:** RE: Pre-application meeting: 132kV Electrical Grid Infrastructure for the Igolide Wind Energy Facility - MEETING MINUTES

**Importance:** High

Good Day,

WSP thanks the Department for attending the pre-application meeting on the 24<sup>th</sup> April 2024 for the proposed 132kV Electrical Grid Infrastructure for the Igolide Wind Energy Facility, in the Gauteng Province.

Attached is a copy of the minutes of the meeting.

GDARD is kindly requested to please approve and sign (in the spaces provided) the minutes and return the signed copy.

Please note that should WSP not receive a response to the minutes within 7 working days, we will consider the minutes approved.

Kind regards,



**Jashmika Maharaj**  
Senior Consultant

T +27 11 254 4874  
M +27 81 401-8337

From: Personal details have been redacted as required by the POPI Act

Sent:

To:

Cc:

<Thi

<Liv

<NC

**Subject:** FW: Pre-application meeting: 132kV Electrical Grid Infrastructure for the Igolide Wind Energy Facility

Afternoon Jashmika

We have received your request for pre-application meeting and I will propose that you set up an invite to the people I will Cc in this email for a date of 24 April 2024 at 10h00 am. We will also request you to take minutes and send it to everyone within seven working days. I also request you to send us short but brief explanation for the project you are proposing meeting for so that we can invite all relevant units to this meeting. Can you confirm your availability of this meeting as soon as possible because if you don't, we then take other appointments for that date and time.

Regards

Personal details have  
been redacted as  
required by the POPI

---

**From:** Personal details have been redacted as required by the POPI Act

**Sent:**

**To:**

**Cc:**

**<ER**

**Subject:** RE: Pre-application meeting: 132kV Electrical Grid Infrastructure for the Igolide Wind Energy Facility

Good day

Kindly note that due to many pre application meetings we have sometimes it takes longer for us to respond, I have forwarded your request to relevant people , as soon as they have an opening, they will contact you. apologies for inconvenience caused.

Kind regards,  
Mulalo

---

**From:** Maharaj, Jashmika <[jashmika.maharaj@wsp.com](mailto:jashmika.maharaj@wsp.com)>

**Sent:** Tuesday, April 16, 2024 12:29 PM

**To:** MUKWEVHO, MULALO (GDARD) <[mulalo.mukwevho2@gauteng.gov.za](mailto:mulalo.mukwevho2@gauteng.gov.za)>

**Cc:** NOGWANYA, MALESELA (GDARDE) <[Malesela.Nogwanya@gauteng.gov.za](mailto:Malesela.Nogwanya@gauteng.gov.za)>

**Subject:** RE: Pre-application meeting: 132kV Electrical Grid Infrastructure for the Igolide Wind Energy Facility

**Importance:** High

Good Day,

The email below refers.

This is a kind follow up regarding the request for a pre-application meeting for the Igolide Wind Energy Facility Grid project.

I would appreciate your response so we can schedule a meeting soonest.

Kind regards,



**Jashmika Maharaj**

Senior Consultant

T +27 11 254 4874

M +27 81 401-8337

---

**From:** Maharaj, Jashmika

**Sent:** Personal details have been redacted as required by the POPI Act

**To:** 'n

**Cc:** 'N

**Subject:** RE: Pre-application meeting: 132kV Electrical Grid Infrastructure for the Igolide Wind Energy Facility

Good Day,

I hope you are well.

The email trail refers. Your colleague Ms Nogwanya Malesela advised that you may be able to assist with my pre-application query for the proposed 132kV Electrical Grid Infrastructure for the Igolide Wind Energy Facility.

I have attached a kmz of the proposed infrastructure for your reference. Please can you revert and provide any requirements you may have for the meeting as well as possible dates.

Kind regards,



**Jashmika Maharaj**  
Senior Consultant

T +27 11 254 4874  
M +27 81 401-8337

---

**From:** Personal details have been redacted as required by the POPI Act

**Sent:** T

**To:** Ma

<[Zandi](#)

**Subject:** RE: Pre-application meeting: 132kV Electrical Grid Infrastructure for the Igolide Wind Energy Facility

Good day

Please request a pre-application meeting with Mulalo Mkwevho at a way forward regarding your application.

Personal details have been redacted as required by the POPI Act

You will get

Regards

---

**From:** Maharaj, Jashmika <[jashmika.maharaj@wsp.com](mailto:jashmika.maharaj@wsp.com)>

**Sent:** Personal details have been redacted as required by the POPI Act

**To:** NO

<[ZANDI](#)

**Subject:** Pre-application meeting: 132kV Electrical Grid Infrastructure for the Igolide Wind Energy Facility

**Importance:** High

Good Day,

I hope you are well.

WSP was appointed as the EAP by Enertrag South Africa (Applicant) for the proposed 132kV Electrical Grid Infrastructure for the Igolide Wind Energy Facility.

Please confirm whether this Department will be the Competent Authority and if so, will a pre-application meeting be required.

Kind regards,



**Jashmika Maharaj**  
Senior Consultant

T +27 11 254 4874  
M +27 81 401-8337



WSP in Africa  
Building 1, Maxwell Office Park, Magwa Crescent West, Waterfall City, Midrand  
1685 South Africa

[wsp.com](http://wsp.com)

WSP is a proud Level 1 B-BBEE contributor and is internationally certified for ISO 9001, 14001 & 45001

Confidential

This message, including any document or file attached, is intended only for the addressee and may contain privileged and/or confidential information. Any other person is strictly prohibited from reading, using, disclosing or copying this message. If you have received this message in error, please notify the sender and delete the message. Thank you.

WSP Group Africa (Pty) Ltd, Registered Office: Building 1, Maxwell Office Park, Magwa Crescent West, Waterfall City, Midrand, Gauteng, 1685, South Africa  
Registered Number: 1999/008928/07 South Africa

NOTICE: This communication and any attachments ("this message") may contain information which is privileged, confidential, proprietary or otherwise subject to restricted disclosure under applicable law. This message is for the sole use of the intended recipient(s). Any unauthorized use, disclosure, viewing, copying, alteration, dissemination or distribution of, or reliance on, this message is strictly prohibited. If you have received this message in error, or you are not an authorized or intended recipient, please notify the sender immediately by replying to this message, delete this message and all copies from your e-mail system and destroy any printed copies.

-LAEmHhHzdJzBITWfa4Hgs7pbKI



## SCHOOL GOVERNING BODY ELECTIONS

BE ACTIVE, PLAY YOUR PART AND VOTE WISELY

### Disclaimer

The Gauteng Provincial Government does not take responsibility for Gauteng Provincial Government users' personal views. Gauteng Provincial Government services available online at [www.gauteng.gov.za](http://www.gauteng.gov.za). This message from [Malesela.Nogwanya@gauteng.gov.za](mailto:Malesela.Nogwanya@gauteng.gov.za) is confidential and may be legally privileged. It is intended solely for use by the named recipient(s). If you are not the named recipient(s), you are hereby notified that any disclosure, copying, distribution or taking action in reliance of the contents of this information is strictly prohibited and may be unlawful.



## SCHOOL GOVERNING BODY ELECTIONS

BE ACTIVE, PLAY YOUR PART AND VOTE WISELY

### Disclaimer

The Gauteng Provincial Government does not take responsibility for Gauteng Provincial Government users' personal views. Gauteng Provincial Government services available online at [www.gauteng.gov.za](http://www.gauteng.gov.za). This message from [ERICK.MOLETSANE@gauteng.gov.za](mailto:ERICK.MOLETSANE@gauteng.gov.za) is confidential and may be legally privileged. It is intended solely for use by the named recipient(s). If you are not the named recipient(s), you are hereby notified that any disclosure, copying, distribution or taking action in reliance of the contents of this information is strictly prohibited and may be unlawful.