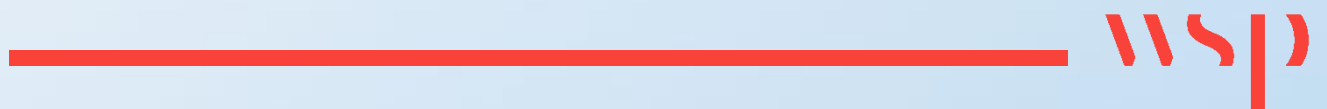


Appendix J

TRAFFIC STATEMENT



WSP Group Africa (Pty) Ltd
Building C, Knightsbridge
33 Sloane Street
Bryanston
2191

Email: Ashlea.Strong@wsp.com

25 September 2024

Our Reference: 4484.2

Attention: Ms Ashlea Strong

KOMATI POWER STATION SOLAR PHOTOVOLTAIC FACILITY, BATTERY ENERGY STORAGE SYSTEMS AND ASSOCIATED INFRASTRUCTURE, MPUMALANGA PROVINCE

Eskom Holdings SOC (Ltd) (Eskom) are proposing the expansion of the authorised 100 MW Solar Photovoltaics (PV) Energy Facility (SEF); 150 MW Battery Energy Storage System (BESS); and associated infrastructure at the Komati Power Station located in the Mpumalanga Province, South Africa. The Environmental Impact Assessment (EIA) was undertaken to meet the requirements of both the World Bank Group (WBG) Environmental and Social Framework (ESF) and the EIA requirements under the National Environmental Management Act (Act 107 of 1998) (NEMA). The Komati Power Station Facility received an environmental authorisation (EA) (DFFE:14/12/16/3/3/2/2456) in 02 February 2024.

The Amendment Process prescribed in GNR 326 promulgated in terms of section 24(5) and 44 of the National Environmental Management Act (No. 107 of 1998) (NEMA) will be undertaken.

Innovative Transport Solutions (ITS) (Pty) Ltd compiled the Traffic Impact Assessment report for the proposed Eskom Komati PV and BESS project. The Traffic Impact Assessment report is dated May 2023. Since then, some amendment to the project have been proposed.

The proposed project amendments will comprise the following key components:

- Solar Energy Facility;
- Site Substation(s);
- BESS; and
- Associated infrastructure.

THINKING GLOBAL, ACTING LOCAL

The approved project and proposed amendments to the project are shown schematically in **Annexure A**. It was considered whether these amendments would have a significant impact on the following critical items for the Traffic Impact Assessment:

- Site location;
- Proposed accesses;
- Trip generation;
- Trip distribution;
- Model split; and
- Trip assignment.

It was concluded that these proposed amendments would have no impact on the critical items of the May 2023 Traffic Impact Assessment report. The environmental impact of the transportation activities during the construction, operations and decommissioning phases of the proposed Eskom Komati PV and BESS project, with a significance rating of N2, is expected to be low.

It is recommended that a Transport Management Plan should be compiled for the construction and decommissioning phase of the project. The aim of the Traffic Management Plan would be to improve road safety during these phases for the community as well as to limit the construction and decommissioning phase traffic within the local peak hours.

Yours sincerely,



Dr Pieter Pretorius, Pr. Eng.

Director

Annexure A

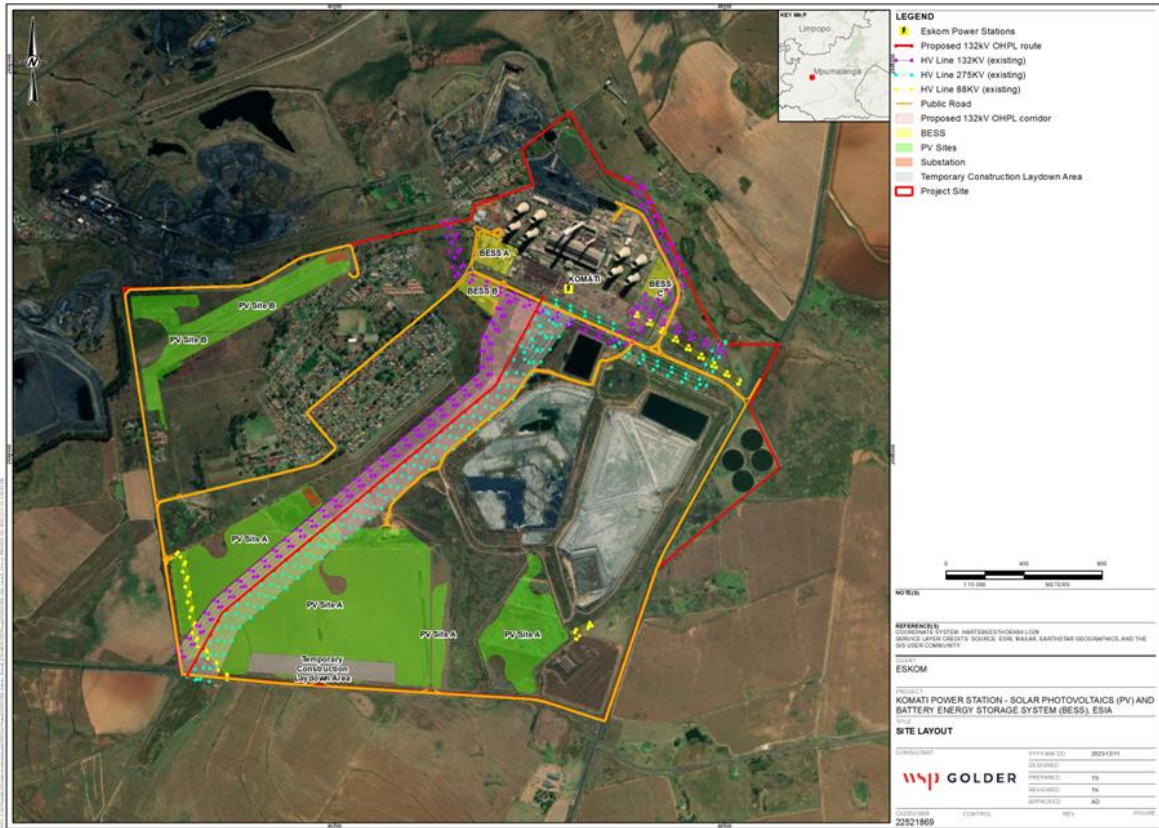


Figure A1: Currently Approved Project Infrastructure

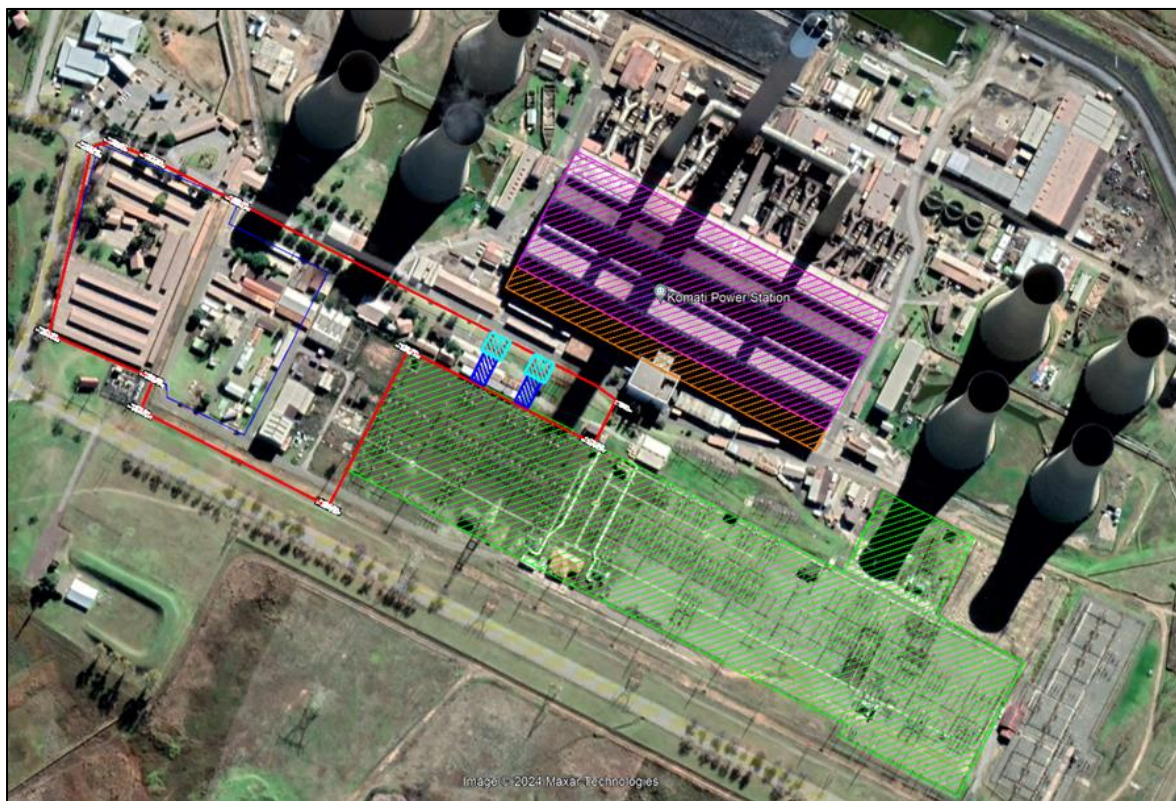


Figure A2: BESS Area A expansion

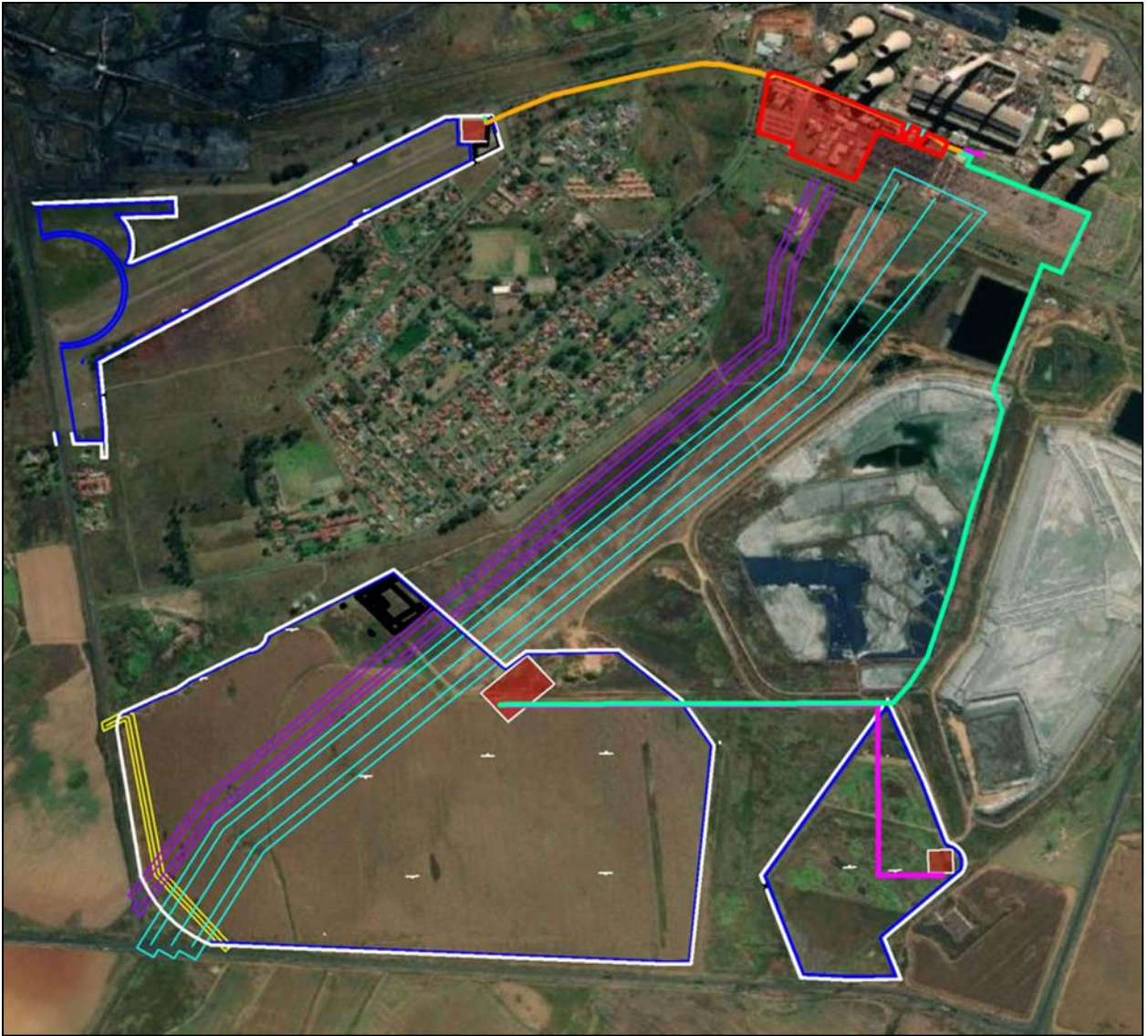


Figure A3: Proposed Amended Infrastructure Layout