

Appendix I

DFFE SCREENING REPORT



**SCREENING REPORT FOR AN ENVIRONMENTAL AUTHORIZATION AS
REQUIRED BY THE 2014 EIA REGULATIONS – PROPOSED SITE
ENVIRONMENTAL SENSITIVITY**

EIA Reference number: N/A

Project name: Phefumula Emoyeni WEF

Project title: Phefumula Emoyeni WEF

Date screening report generated: 04/09/2023 14:13:44

Applicant: Serti Green (Pty) Ltd

Compiler: WSP Group Africa

Compiler signature:

.....

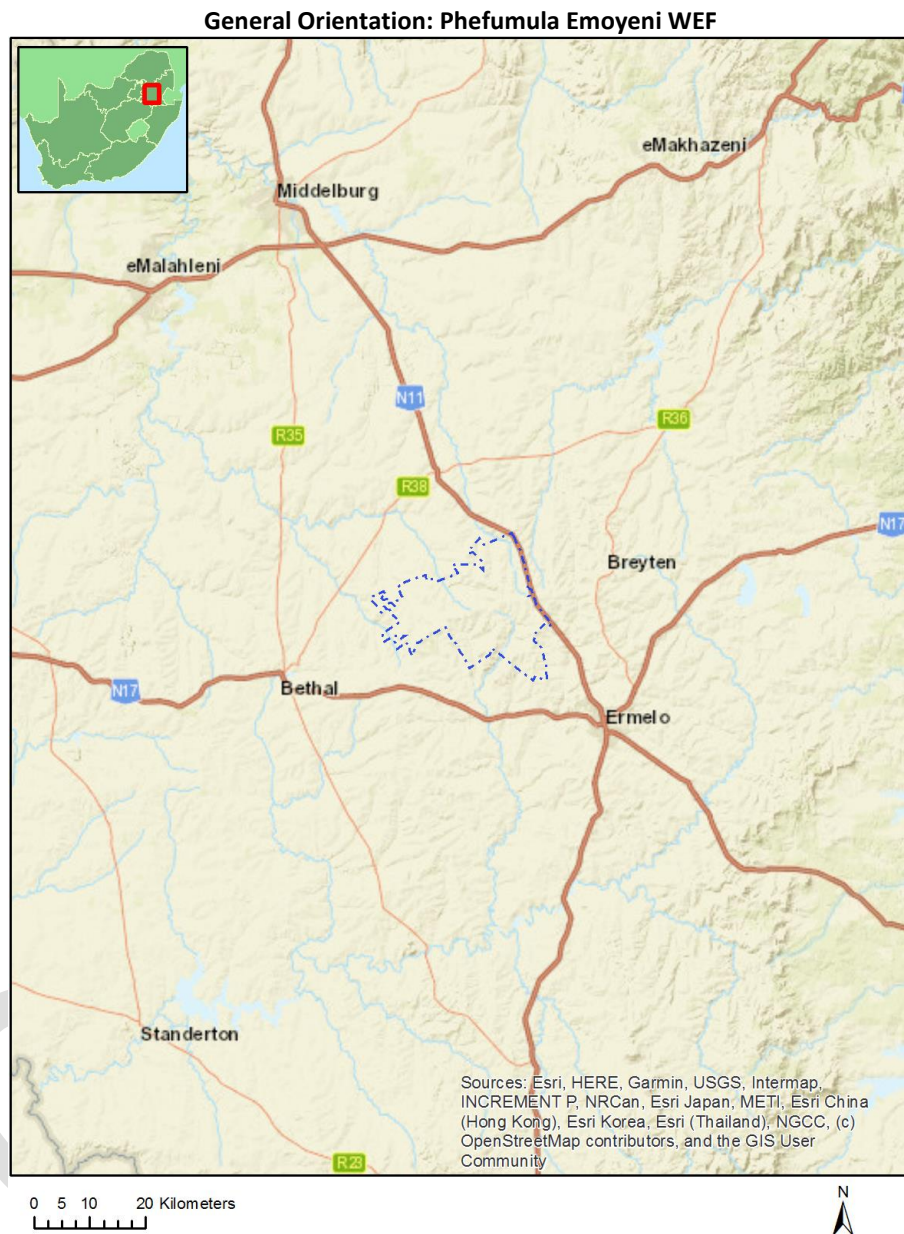
Application Category: Utilities Infrastructure | Electricity | Generation | Renewable | Wind

Table of Contents

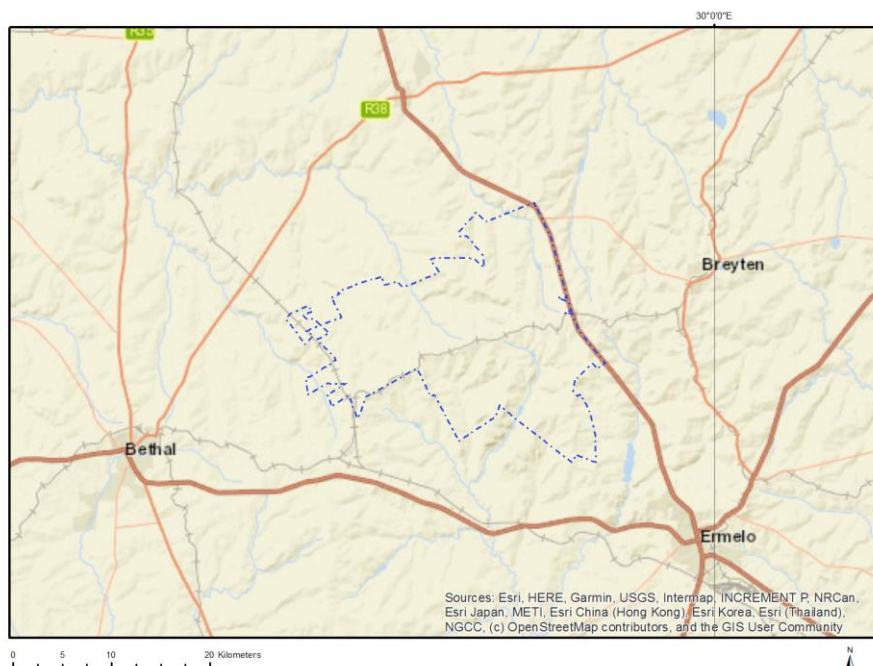
Proposed Project Location	3
Orientation map 1: General location	3
Map of proposed site and relevant area(s)	4
Cadastral details of the proposed site	4
Wind and Solar developments with an approved Environmental Authorisation or applications under consideration within 30 km of the proposed area	7
Environmental Management Frameworks relevant to the application	7
Environmental screening results and assessment outcomes	8
Relevant development incentives, restrictions, exclusions or prohibitions	8
Proposed Development Area Environmental Sensitivity	8
Specialist assessments identified	8
Results of the environmental sensitivity of the proposed area	11
MAP OF RELATIVE AGRICULTURE THEME SENSITIVITY	11
MAP OF RELATIVE ANIMAL SPECIES THEME SENSITIVITY	12
MAP OF RELATIVE AQUATIC BIODIVERSITY THEME SENSITIVITY	13
MAP OF RELATIVE ARCHAEOLOGICAL AND CULTURAL HERITAGE THEME SENSITIVITY	14
MAP OF RELATIVE AVIAN (WIND) THEME SENSITIVITY	15
MAP OF RELATIVE BATS (WIND) THEME SENSITIVITY	16
MAP OF RELATIVE CIVIL AVIATION (WIND) THEME SENSITIVITY	17
MAP OF RELATIVE DEFENCE (WIND) THEME SENSITIVITY	18
MAP OF RELATIVE FLICKER THEME SENSITIVITY	19
MAP OF RELATIVE LANDSCAPE (WIND) THEME SENSITIVITY	20
MAP OF RELATIVE PALEONTOLOGY THEME SENSITIVITY	21
MAP OF RELATIVE NOISE THEME SENSITIVITY	22
MAP OF RELATIVE PLANT SPECIES THEME SENSITIVITY	23
MAP OF RELATIVE RFI (WIND) THEME SENSITIVITY	24
MAP OF RELATIVE TERRESTRIAL BIODIVERSITY THEME SENSITIVITY	25
MAP OF RELATIVE VULTURE SPECIES THEME SENSITIVITY	26

Proposed Project Location

Orientation map 1: General location



Map of proposed site and relevant area(s)



Cadastral details of the proposed site

Property details:

No	Farm Name	Farm/ Erf No	Portion	Latitude	Longitude	Property Type
1	GROBLESHOEK	191	0	26°16'14.19S	29°47'4.34E	Farm
2	TWEEFONTEIN	249	0	26°23'34.65S	29°46'35.11E	Farm
3	VOORZORG	250	0	26°21'56.22S	29°44'8.98E	Farm
4	WITBANK -	236	0	26°19'41.46S	29°42'52.12E	Farm
5	KUILFONTEIN	234	0	26°20'18.34S	29°39'34.59E	Farm
6	KRANSPOORT	248	0	26°22'25.45S	29°51'27.82E	Farm
7	ORPENSHRAAL No . -	238	0	26°20'3.02S	29°50'54.38E	Farm
8	BOSMANSKRANS	217	0	26°16'31.96S	29°49'31.12E	Farm
9	BOSMANSHOEK -	235	0	26°18'51.1S	29°48'44.73E	Farm
10	ORPENSHRAAL No . -	238	0	26°17'41.31S	29°50'18.44E	Farm
11	GELIKSDRAAI	240	0	26°18'32.17S	29°49'51.87E	Farm
12	UIZICHT	266	0	26°25'28.98S	29°43'1.53E	Farm
13	VAALBANK	233	0	26°22'27.59S	29°36'44.37E	Farm
14	MIDDELPLAAT	271	0	26°25'37.23S	29°50'26.23E	Farm
15	DRIEHOEK -	273	0	26°26'17.57S	29°53'16.97E	Farm
16	ISRAEL	207	0	26°17'56.72S	29°48'17.68E	Farm
17	NOOITGEDACHT	251	0	26°22'31.52S	29°41'18.8E	Farm
18	WAG-N-BIETJIE	553	0	26°19'17.6S	29°50'43.45E	Farm
19	VOORZORG	578	0	26°20'19.74S	29°45'24.3E	Farm
20	NOOITGEDACHT	237	0	26°19'29.87S	29°47'28.1E	Farm
21	ELIM -	247	0	26°18'26.41S	29°50'44.87E	Farm
22	SPION KOP	252	0	26°25'7.91S	29°38'4.83E	Farm
23	KRANSPOORT	827	0	26°21'5.16S	29°51'38.93E	Farm
24	BOSMANSKRANS	217	3	26°17'41.27S	29°49'18.47E	Farm Portion
25	BOSMANSKRANS	217	9	26°16'42.69S	29°50'34.18E	Farm Portion

26	KUILFONTEIN	234	10	26°21'6.81S	29°38'21.02E	Farm Portion
27	KUILFONTEIN	234	12	26°21'51.62S	29°39'1.56E	Farm Portion
28	BOSMANSHOEK -	235	3	26°18'41.99S	29°48'49.36E	Farm Portion
29	WITBANK -	236	7	26°18'38.98S	29°41'33.83E	Farm Portion
30	NOOITGEDACHT	237	13	26°19'7.6S	29°46'16.35E	Farm Portion
31	NOOITGEDACHT	237	3	26°21'13.74S	29°48'38.27E	Farm Portion
32	NOOITGEDACHT	237	7	26°17'50.35S	29°46'12.91E	Farm Portion
33	GROBLESHOEK	191	0	26°16'17.16S	29°47'4.49E	Farm Portion
34	BOSMANSKRANS	217	7	26°15'27.73S	29°49'49.44E	Farm Portion
35	BOSMANSKRANS	217	0	26°16'30.14S	29°50'9.86E	Farm Portion
36	BOSMANSKRANS	217	13	26°15'9.55S	29°50'21.6E	Farm Portion
37	KUILFONTEIN	234	14	26°21'26.83S	29°39'40.42E	Farm Portion
38	BOSMANSKRANS	217	5	26°16'4.82S	29°50'13.07E	Farm Portion
39	BOSMANSKRANS	217	8	26°17'41.64S	29°49'55.59E	Farm Portion
40	BOSMANSKRANS	217	4	26°17'15.07S	29°50'38.4E	Farm Portion
41	NOOITGEDACHT	237	9	26°18'8.49S	29°46'59.77E	Farm Portion
42	NOOITGEDACHT	237	11	26°18'41.72S	29°47'42.41E	Farm Portion
43	KUILFONTEIN	234	16	26°20'36.07S	29°40'52.68E	Farm Portion
44	KUILFONTEIN	234	21	26°21'3.34S	29°39'14.46E	Farm Portion
45	KUILFONTEIN	234	9	26°20'46.1S	29°37'55.14E	Farm Portion
46	NOOITGEDACHT	237	10	26°19'12.36S	29°47'39.73E	Farm Portion
47	KUILFONTEIN	234	15	26°21'54.62S	29°39'20.96E	Farm Portion
48	KUILFONTEIN	234	7	26°20'6.59S	29°37'24.82E	Farm Portion
49	KUILFONTEIN	234	18	26°20'17.9S	29°37'57.28E	Farm Portion
50	KUILFONTEIN	234	23	26°19'12.14S	29°40'10.34E	Farm Portion
51	WITBANK -	236	4	26°19'52.27S	29°43'5.82E	Farm Portion
52	WITBANK -	236	10	26°20'23.66S	29°42'21.85E	Farm Portion
53	NOOITGEDACHT	237	1	26°21'17.51S	29°48'28.3E	Farm Portion
54	NOOITGEDACHT	237	6	26°19'44.53S	29°46'55.8E	Farm Portion
55	ORPENSHRAAL No . -	238	10	26°20'2.68S	29°52'9.57E	Farm Portion
56	BOSMANSKRANS	217	14	26°16'16.28S	29°51'0.06E	Farm Portion
57	VAALBANK	233	6	26°20'59.33S	29°37'17.92E	Farm Portion
58	KUILFONTEIN	234	1	26°19'59.93S	29°41'15.84E	Farm Portion
59	KUILFONTEIN	234	8	26°20'29.67S	29°37'34.19E	Farm Portion
60	KUILFONTEIN	234	17	26°20'49.08S	29°39'54.09E	Farm Portion
61	KUILFONTEIN	234	2	26°19'44.66S	29°40'30.71E	Farm Portion
62	WITBANK -	236	2	26°20'55.04S	29°43'24.7E	Farm Portion
63	ISRAEL	207	0	26°17'42.62S	29°48'7.18E	Farm Portion
64	BOSMANSKRANS	217	6	26°15'49.4S	29°48'34.06E	Farm Portion
65	KUILFONTEIN	234	22	26°20'47.54S	29°38'55.44E	Farm Portion
66	KUILFONTEIN	234	11	26°21'30S	29°38'48.28E	Farm Portion
67	WITBANK -	236	3	26°18'38.31S	29°44'41.87E	Farm Portion
68	WITBANK -	236	11	26°19'0.06S	29°42'8.2E	Farm Portion
69	WITBANK -	236	13	26°20'41.3S	29°44'43.12E	Farm Portion
70	NOOITGEDACHT	237	0	26°18'1.45S	29°45'30.67E	Farm Portion
71	NOOITGEDACHT	237	5	26°20'14.74S	29°47'12.1E	Farm Portion
72	BOSMANSKRANS	217	1	26°16'37.81S	29°48'42.82E	Farm Portion
73	NOOITGEDACHT	237	12	26°18'55.71S	29°46'44.02E	Farm Portion
74	NOOITGEDACHT	237	4	26°20'59.98S	29°47'31.63E	Farm Portion
75	ORPENSHRAAL No . -	238	2	26°17'45.32S	29°50'11.63E	Farm Portion
76	ORPENSHRAAL No . -	238	11	26°20'2.11S	29°52'8.5E	Farm Portion
77	GELIKSDRAAI	240	2	26°18'22.79S	29°50'3.61E	Farm Portion
78	KRANSPOORT	248	22	26°22'14.38S	29°51'48.68E	Farm Portion
79	KRANSPOORT	248	2	26°21'33.74S	29°50'0.5E	Farm Portion
80	KRANSPOORT	248	8	26°22'14.56S	29°53'19.69E	Farm Portion
81	NOOITGEDACHT	251	3	26°23'17.21S	29°42'31.71E	Farm Portion
82	SPION KOP	252	2	26°23'21.33S	29°38'40.57E	Farm Portion

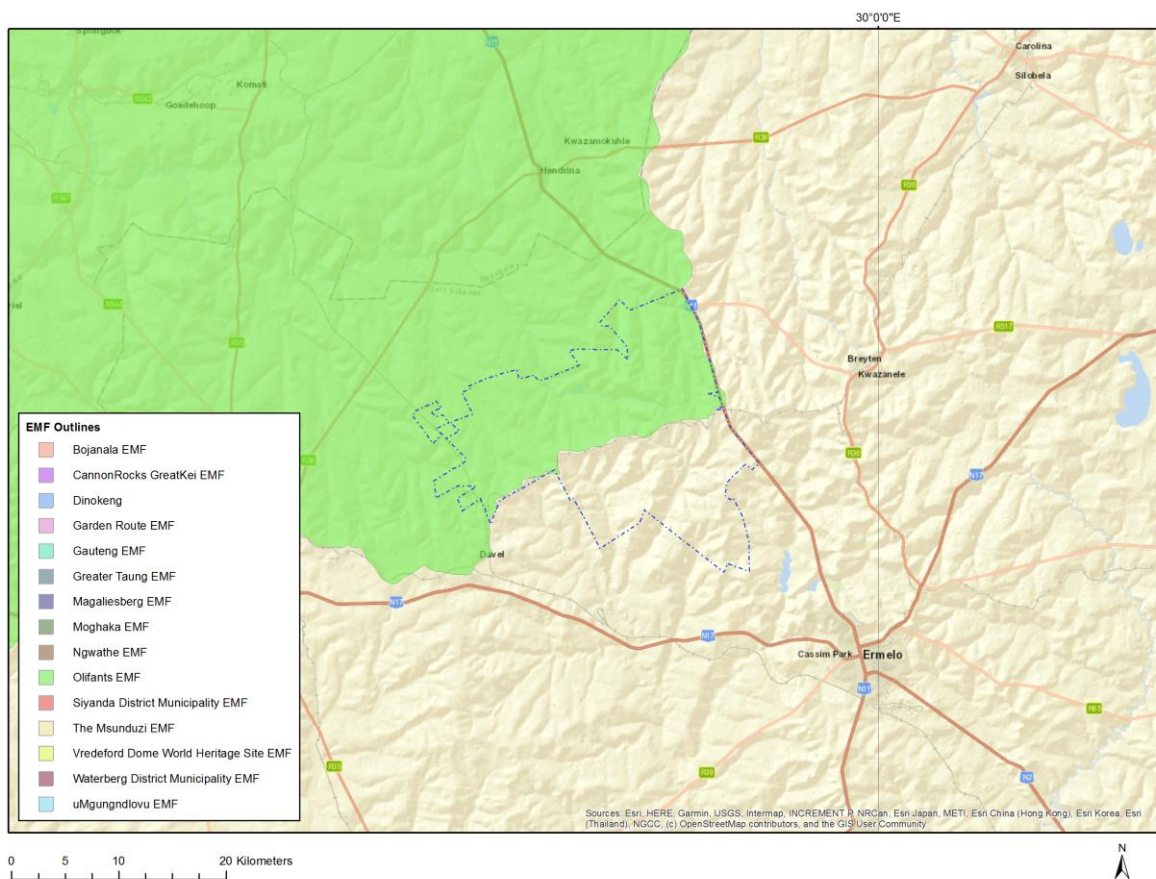
83	WITBANK -	236	5	26°21'25.92S	29°43'20.11E	Farm Portion
84	ORPENSHRAAL No . -	238	9	26°20'1.49S	29°52'9.61E	Farm Portion
85	KRANSPOORT	248	18	26°21'54.15S	29°49'21.47E	Farm Portion
86	KRANSPOORT	248	19	26°21'38.41S	29°48'47.55E	Farm Portion
87	NOOITGEDACHT	251	13	26°24'11.47S	29°41'5.72E	Farm Portion
88	SPION KOP	252	8	26°22'51.77S	29°39'53.58E	Farm Portion
89	KRANSPOORT	248	0	26°22'49.48S	29°51'29.93E	Farm Portion
90	KRANSPOORT	248	10	26°22'27.4S	29°52'51.9E	Farm Portion
91	KRANSPOORT	248	24	26°22'55.71S	29°50'7.16E	Farm Portion
92	TWEEFONTEIN	249	3	26°23'11.82S	29°44'49.05E	Farm Portion
93	NOOITGEDACHT	251	5	26°22'13.44S	29°42'43.43E	Farm Portion
94	NOOITGEDACHT	251	6	26°21'43.62S	29°40'47.82E	Farm Portion
95	NOOITGEDACHT	251	13	26°24'24.26S	29°40'31.17E	Farm Portion
96	NOOITGEDACHT	251	7	26°22'8.1S	29°41'45.95E	Farm Portion
97	NOOITGEDACHT	251	9	26°23'55.39S	29°40'26.34E	Farm Portion
98	NOOITGEDACHT	237	2	26°20'18.3S	29°48'46.4E	Farm Portion
99	NOOITGEDACHT	237	8	26°19'17.63S	29°48'43.11E	Farm Portion
100	ORPENSHRAAL No . -	238	0	26°20'4.22S	29°50'52.21E	Farm Portion
101	GELIKSDRAAI	240	1	26°18'50.65S	29°49'28.73E	Farm Portion
102	KRANSPOORT	248	5	26°22'13.14S	29°52'27.16E	Farm Portion
103	KRANSPOORT	248	6	26°21'17.54S	29°49'14.3E	Farm Portion
104	TWEEFONTEIN	249	1	26°24'13.45S	29°45'28.87E	Farm Portion
105	NOOITGEDACHT	251	0	26°20'49.42S	29°41'55.36E	Farm Portion
106	NOOITGEDACHT	251	4	26°24'53.21S	29°40'19.24E	Farm Portion
107	KRANSPOORT	248	21	26°21'54.1S	29°51'57.54E	Farm Portion
108	KRANSPOORT	248	12	26°23'5.9S	29°52'14.43E	Farm Portion
109	TWEEFONTEIN	249	8	26°24'58.09S	29°46'51.61E	Farm Portion
110	TWEEFONTEIN	249	9	26°22'56.66S	29°48'6.32E	Farm Portion
111	NOOITGEDACHT	251	11	26°21'19.28S	29°41'24.83E	Farm Portion
112	MIDDELPLAAT	271	4	26°26'18.03S	29°51'37.52E	Farm Portion
113	DRIEHOEK -	273	7	26°27'0.74S	29°52'57.97E	Farm Portion
114	KRANSPOORT	248	20	26°21'29.03S	29°49'32.63E	Farm Portion
115	KRANSPOORT	248	4	26°22'19.1S	29°50'41.27E	Farm Portion
116	NOOITGEDACHT	251	9	26°24'32.89S	29°40'37.42E	Farm Portion
117	MIDDELPLAAT	271	7	26°24'37.98S	29°50'41.06E	Farm Portion
118	KRANSPOORT	248	11	26°22'44.78S	29°52'33.12E	Farm Portion
119	KRANSPOORT	248	23	26°22'15.79S	29°50'1.38E	Farm Portion
120	TWEEFONTEIN	249	2	26°22'31.55S	29°46'8.05E	Farm Portion
121	NOOITGEDACHT	251	12	26°24'10.06S	29°41'6.53E	Farm Portion
122	SPION KOP	252	1	26°24'12.29S	29°39'24.47E	Farm Portion
123	DRIEHOEK -	273	2	26°24'49.85S	29°52'23.98E	Farm Portion
124	ELIM -	247	0	26°18'26.3S	29°51'3.13E	Farm Portion
125	KRANSPOORT	248	13	26°23'33.78S	29°52'0.91E	Farm Portion
126	KRANSPOORT	248	3	26°23'47.98S	29°51'6.52E	Farm Portion
127	VOORZORG	250	0	26°21'56.22S	29°44'8.98E	Farm Portion
128	NOOITGEDACHT	251	10	26°22'11.96S	29°40'24.15E	Farm Portion
129	MIDDELPLAAT	271	3	26°24'24.34S	29°49'6.7E	Farm Portion
130	NOOITGEDACHT	251	2	26°23'9.61S	29°41'32.98E	Farm Portion
131	NOOITGEDACHT	251	3	26°23'20.21S	29°42'32.89E	Farm Portion
132	WAG-N-BIETJIE	553	0	26°19'17.6S	29°50'43.45E	Farm Portion
133	MIDDELPLAAT	271	2	26°25'17.99S	29°49'56.51E	Farm Portion
134	DRIEHOEK -	273	0	26°25'59.52S	29°53'3.71E	Farm Portion
135	VOORZORG	578	0	26°20'19.74S	29°45'24.3E	Farm Portion
136	KRANSPOORT	827	0	26°20'55.8S	29°51'35.63E	Farm Portion
137	MIDDELPLAAT	271	8	26°23'16.75S	29°49'22E	Farm Portion
138	MIDDELPLAAT	271	5	26°23'52.21S	29°49'58.72E	Farm Portion
139	MIDDELPLAAT	271	6	26°25'22.19S	29°51'23.42E	Farm Portion

Development footprint¹ vertices:
No development footprint(s) specified.

Wind and Solar developments with an approved Environmental Authorisation or applications under consideration within 30 km of the proposed area

No nearby wind or solar developments found.

Environmental Management Frameworks relevant to the application



Environmental Management Framework	LINK
Olifants EMF	https://screening.environment.gov.za/ScreeningDownloads/EMF/Zone_4_6_67_78_80_92_103_122_129.pdf

¹ “development footprint”, means the area within the site on which the development will take place and includes all ancillary developments for example roads, power lines, boundary walls, paving etc. which require vegetation clearance or which will be disturbed and for which the application has been submitted.

Environmental screening results and assessment outcomes

The following sections contain a summary of any development incentives, restrictions, exclusions or prohibitions that apply to the proposed development site as well as the most environmental sensitive features on the site based on the site sensitivity screening results for the application classification that was selected. The application classification selected for this report is:

Utilities Infrastructure | Electricity | Generation | Renewable | Wind.

Relevant development incentives, restrictions, exclusions or prohibitions

The following development incentives, restrictions, exclusions or prohibitions and their implications that apply to this site are indicated below.

Incentive, restriction or prohibition	Implication
Air Quality-Highveld Priority Area	https://screening.environment.gov.za/ScreeningDownloads/DevelopmentZones/HIGHVELD_PRIORITY_AREA_AQMP.pdf
Strategic Gas Pipeline Corridors-Phase 8: Rompco Pipeline Corridor	https://screening.environment.gov.za/ScreeningDownloads/DevelopmentZones/Combined_GAS.pdf

Proposed Development Area Environmental Sensitivity

The following summary of the development site environmental sensitivities is identified. Only the highest environmental sensitivity is indicated. The footprint environmental sensitivities for the proposed development footprint as identified, are indicative only and must be verified on site by a suitably qualified person before the specialist assessments identified below can be confirmed.

Theme	Very High sensitivity	High sensitivity	Medium sensitivity	Low sensitivity
Agriculture Theme	X			
Animal Species Theme		X		
Aquatic Biodiversity Theme	X			
Archaeological and Cultural Heritage Theme		X		
Avian (Wind) Theme				X
Bats (Wind) Theme		X		
Civil Aviation (Wind) Theme		X		
Defence (Wind) Theme				X
Flicker Theme	X			
Landscape (Wind) Theme	X			
Paleontology Theme	X			
Noise Theme	X			
Plant Species Theme			X	
RFI (Wind) Theme	X			
Terrestrial Biodiversity Theme	X			
Vulture Species Theme			X	

Specialist assessments identified

Based on the selected classification, and the known impacts associated with the proposed development, the following list of specialist assessments have been identified for inclusion in the assessment report. It is the responsibility of the EAP to confirm this list and to motivate in the

assessment report, the reason for not including any of the identified specialist study including the provision of photographic evidence of the site situation.

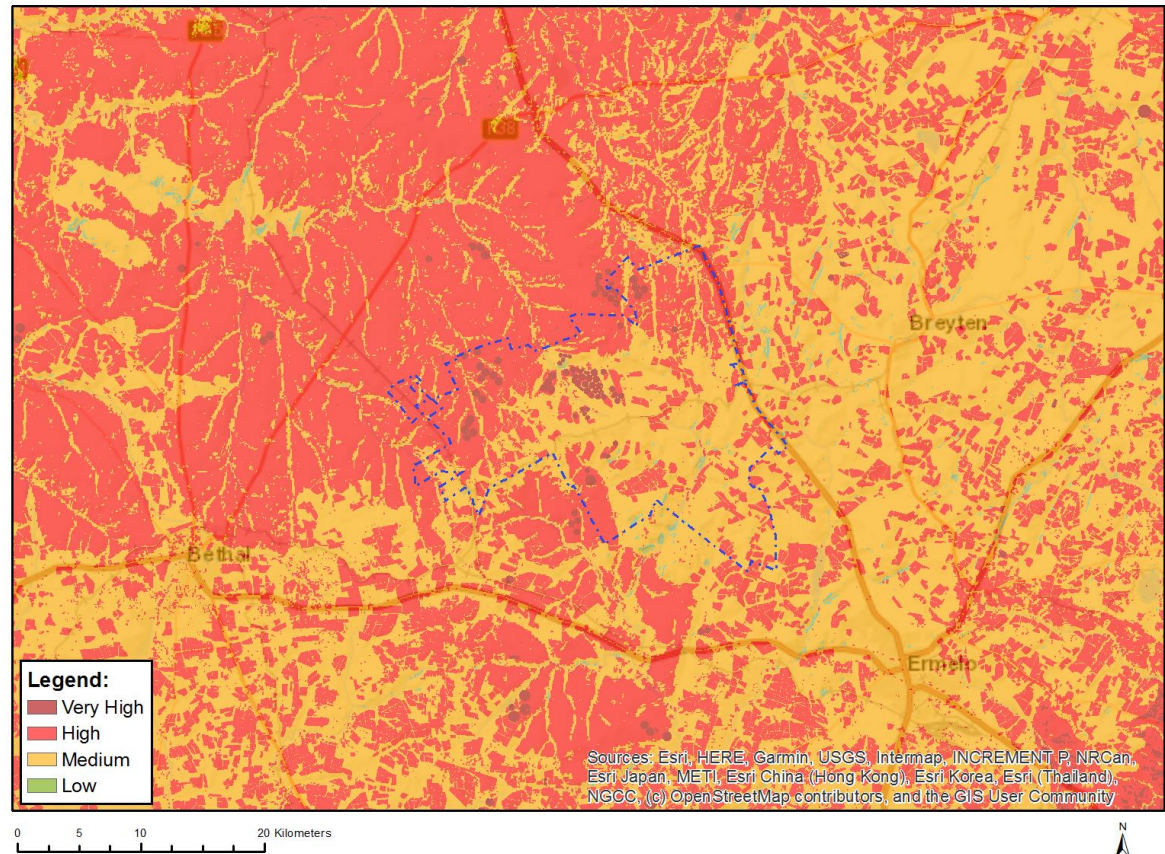
No	Specialist assessment	Assessment Protocol
1	Agricultural Impact Assessment	https://screening.environment.gov.za/ScreeningDownloads/AssessmentProtocols/Gazetted_WindAndSolar_Agriculture_Assessment_Protocols.pdf
2	Landscape/Visual Impact Assessment	https://screening.environment.gov.za/ScreeningDownloads/AssessmentProtocols/Gazetted_General_Requirement_Assessment_Protocols.pdf
3	Archaeological and Cultural Heritage Impact Assessment	https://screening.environment.gov.za/ScreeningDownloads/AssessmentProtocols/Gazetted_General_Requirement_Assessment_Protocols.pdf
4	Palaeontology Impact Assessment	https://screening.environment.gov.za/ScreeningDownloads/AssessmentProtocols/Gazetted_General_Requirement_Assessment_Protocols.pdf
5	Terrestrial Biodiversity Impact Assessment	https://screening.environment.gov.za/ScreeningDownloads/AssessmentProtocols/Gazetted_Terrestrial_Biodiversity_Assessment_Protocols.pdf
6	Aquatic Biodiversity Impact Assessment	https://screening.environment.gov.za/ScreeningDownloads/AssessmentProtocols/Gazetted_Aquatic_Biodiversity_Assessment_Protocols.pdf
7	Avian Impact Assessment	https://screening.environment.gov.za/ScreeningDownloads/AssessmentProtocols/Gazetted_Avifauna_Assessment_Protocols.pdf
8	Civil Aviation Assessment	https://screening.environment.gov.za/ScreeningDownloads/AssessmentProtocols/Gazetted_Civil_Aviation_Installations_Assessment_Protocols.pdf
9	Defense Assessment	https://screening.environment.gov.za/ScreeningDownloads/AssessmentProtocols/Gazetted_Defence_Installations_Assessment_Protocols.pdf
10	RFI Assessment	https://screening.environment.gov.za/ScreeningDownloads/AssessmentProtocols/Gazetted_General_Requirement_Assessment_Protocols.pdf
11	Noise Impact Assessment	https://screening.environment.gov.za/ScreeningDownloads/AssessmentProtocols/Gazetted_Noise_Impacts_Assessment_Protocol.pdf
12	Flicker Assessment	https://screening.environment.gov.za/ScreeningDownloads/AssessmentProtocols/Gazetted_General_Requirement_Assessment_Protocols.pdf
13	Traffic Impact Assessment	https://screening.environment.gov.za/ScreeningDownloads/AssessmentProtocols/Gazetted_General_Requirement_Assessment_Protocols.pdf
14	Geotechnical Assessment	https://screening.environment.gov.za/ScreeningDownloads/AssessmentProtocols/Gazetted_General_Requirement_Assessment_Protocols.pdf
15	Socio-Economic Assessment	https://screening.environment.gov.za/ScreeningDownloads/AssessmentProtocols/Gazetted_General_Requirement_Assessment_Protocols.pdf
16	Plant Species Assessment	https://screening.environment.gov.za/ScreeningDownloads/AssessmentProtocols/Gazetted_General_Requirement_Assessment_Protocols.pdf

		ssmentProtocols/Gazetted Plant Species Assessment Protocols.pdf
17	Animal Species Assessment	https://screening.environment.gov.za/ScreeningDownloads/AssessmentProtocols/Gazetted Animal Species Assessment Protocols.pdf

Results of the environmental sensitivity of the proposed area.

The following section represents the results of the screening for environmental sensitivity of the proposed site for relevant environmental themes associated with the project classification. It is the duty of the EAP to ensure that the environmental themes provided by the screening tool are comprehensive and complete for the project. Refer to the disclaimer.

MAP OF RELATIVE AGRICULTURE THEME SENSITIVITY

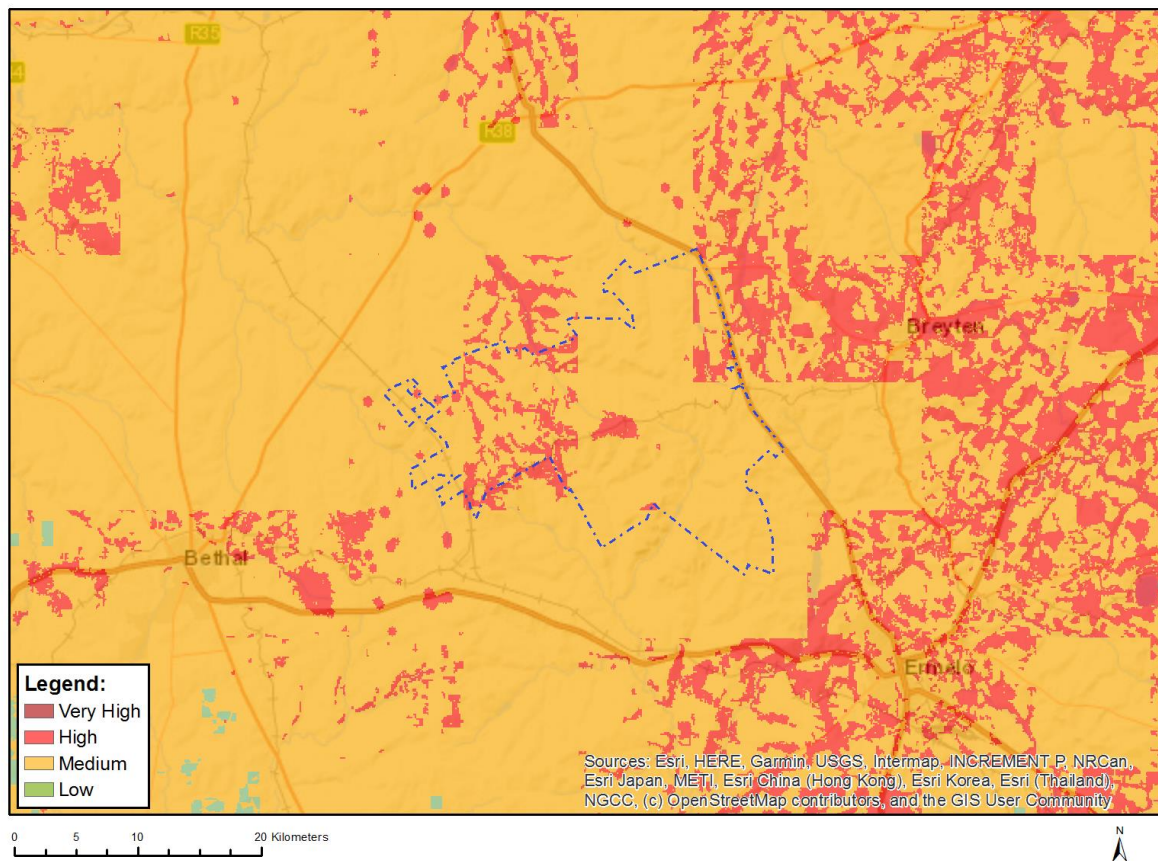


Very High sensitivity	High sensitivity	Medium sensitivity	Low sensitivity
X			

Sensitivity Features:

Sensitivity	Feature(s)
High	Land capability;09. Moderate-High/10. Moderate-High
Low	Land capability;01. Very low/02. Very low/03. Low-Very low/04. Low-Very low/05. Low
Medium	Land capability;06. Low-Moderate/07. Low-Moderate/08. Moderate
Very High	Land capability;11. High/12. High-Very high/13. High-Very high/14. Very high/15. Very high

MAP OF RELATIVE ANIMAL SPECIES THEME SENSITIVITY



Where only a sensitive plant unique number or sensitive animal unique number is provided in the screening report and an assessment is required, the environmental assessment practitioner (EAP) or specialist is required to email SANBI at eiadatarequests@sanbi.org.za listing all sensitive species with their unique identifiers for which information is required. The name has been withheld as the species may be prone to illegal harvesting and must be protected. SANBI will release the actual species name after the details of the EAP or specialist have been documented.

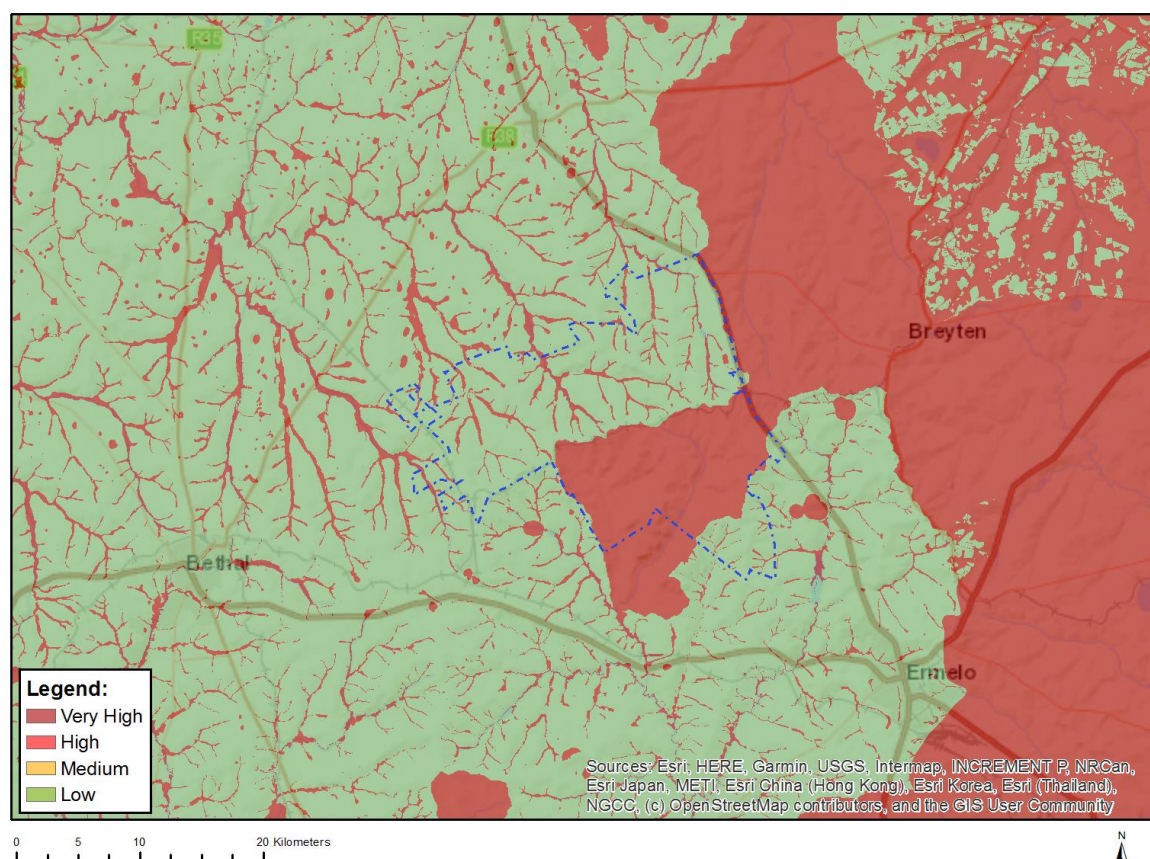
Very High sensitivity	High sensitivity	Medium sensitivity	Low sensitivity
	X		

Sensitivity Features:

Sensitivity	Feature(s)
High	Aves-Geronticus calvus
High	Aves-Polemaetus bellicosus
High	Aves-Sagittarius serpentarius
High	Aves-Mycteria ibis
Medium	Aves-Hydroprogne caspia
Medium	Aves-Geronticus calvus
Medium	Aves-Tyto capensis
Medium	Aves-Neotis denhami
Medium	Aves-Sagittarius serpentarius
Medium	Aves-Eupodotis senegalensis
Medium	Insecta-Lepidochrysops procera
Medium	Mammalia-Crocidura maquassiensis
Medium	Mammalia-Hydrictis maculicollis

Medium	Mammalia-Ourebia ourebi ourebi
--------	--------------------------------

MAP OF RELATIVE AQUATIC BIODIVERSITY THEME SENSITIVITY

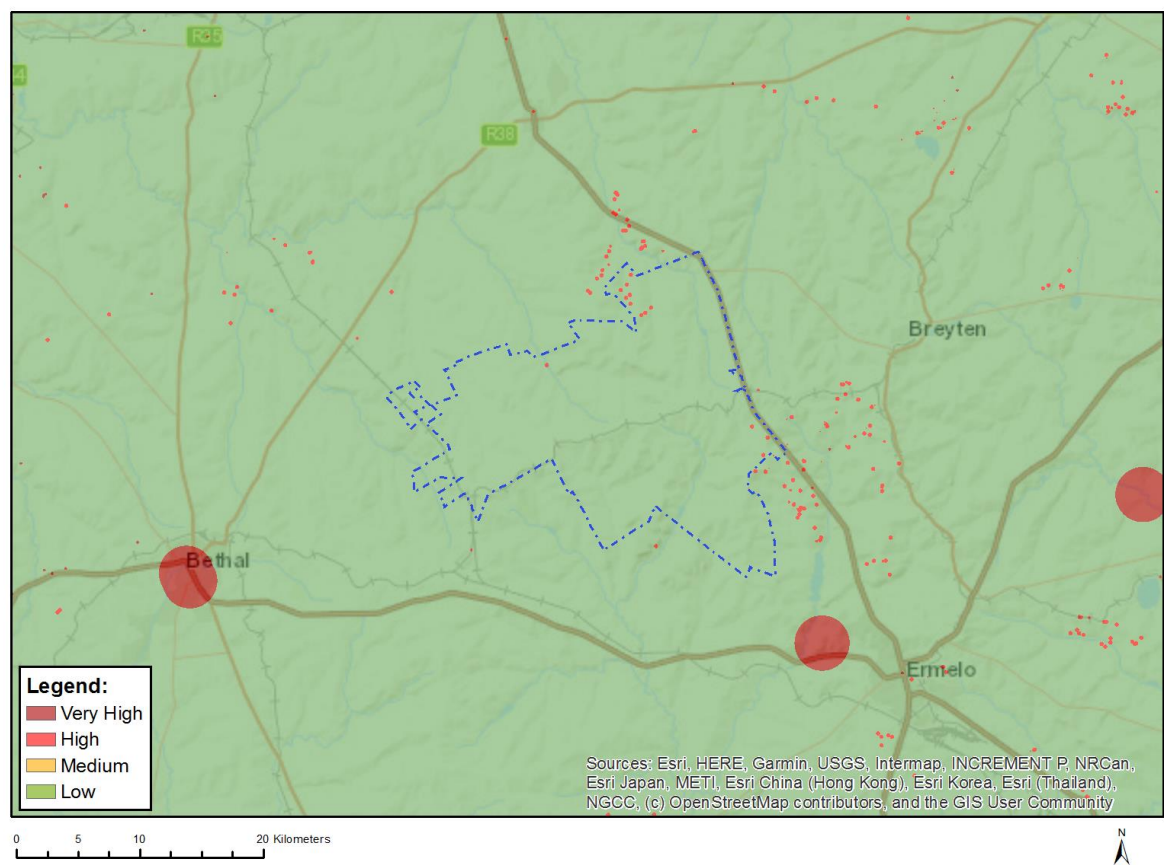


Very High sensitivity	High sensitivity	Medium sensitivity	Low sensitivity
X			

Sensitivity Features:

Sensitivity	Feature(s)
Low	Low sensitivity
Very High	CBA: Aquatic rivers
Very High	CBA: Wetlands
Very High	ESA: Important subcatchments
Very High	ESA: Wetlands
Very High	FEPA Subcatchment
Very High	Rivers_AB
Very High	Rivers_C
Very High	Rivers_D
Very High	Wetlands_Mesic Highveld Grassland Bioregion (Depression)
Very High	Wetlands_Mesic Highveld Grassland Bioregion (Floodplain)
Very High	Wetlands_Mesic Highveld Grassland Bioregion (Seep)
Very High	Wetlands_Mesic Highveld Grassland Bioregion (Valley-bottom)

MAP OF RELATIVE ARCHAEOLOGICAL AND CULTURAL HERITAGE THEME SENSITIVITY

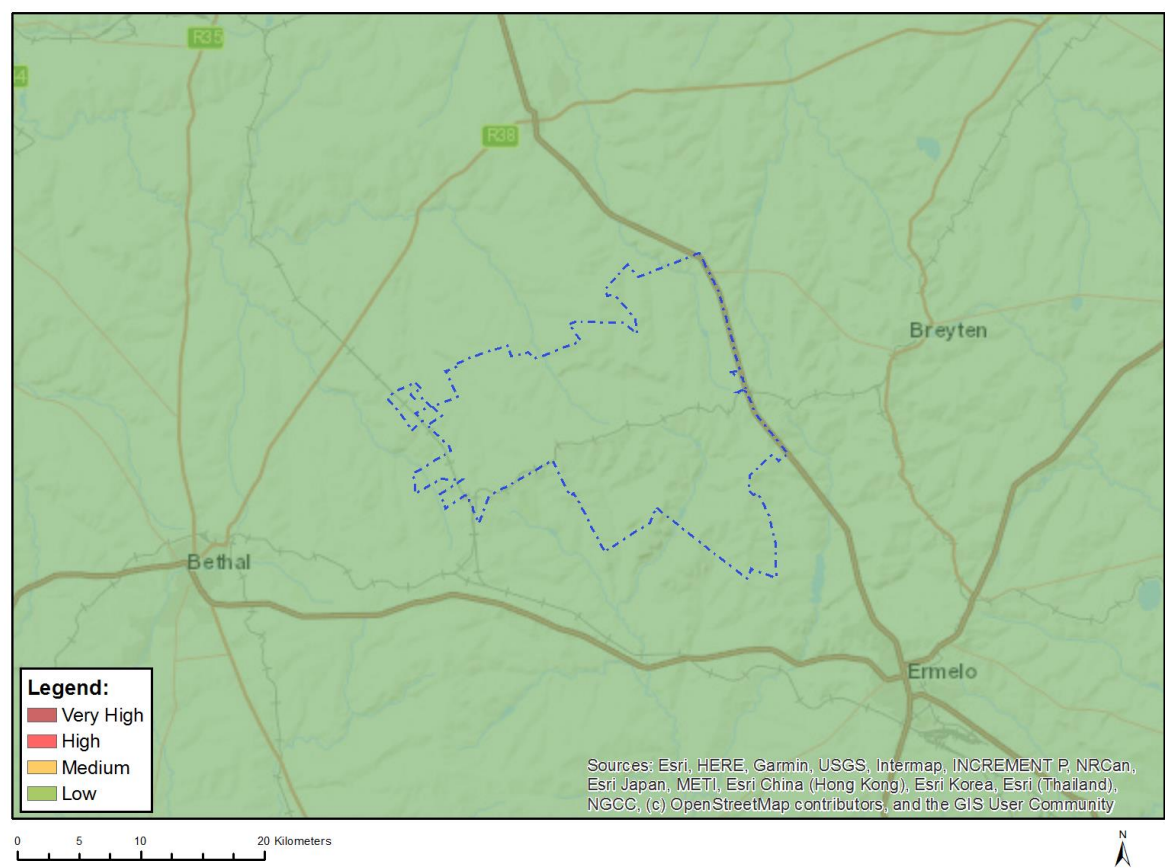


Very High sensitivity	High sensitivity	Medium sensitivity	Low sensitivity
	X		

Sensitivity Features:

Sensitivity	Feature(s)
High	Within 150m of a Grade IIIa Heritage site
High	Within 100m of a Grade IIIb Heritage site
High	Within 50m of a Grade IIIc Heritage site
Low	Low sensitivity

MAP OF RELATIVE AVIAN (WIND) THEME SENSITIVITY

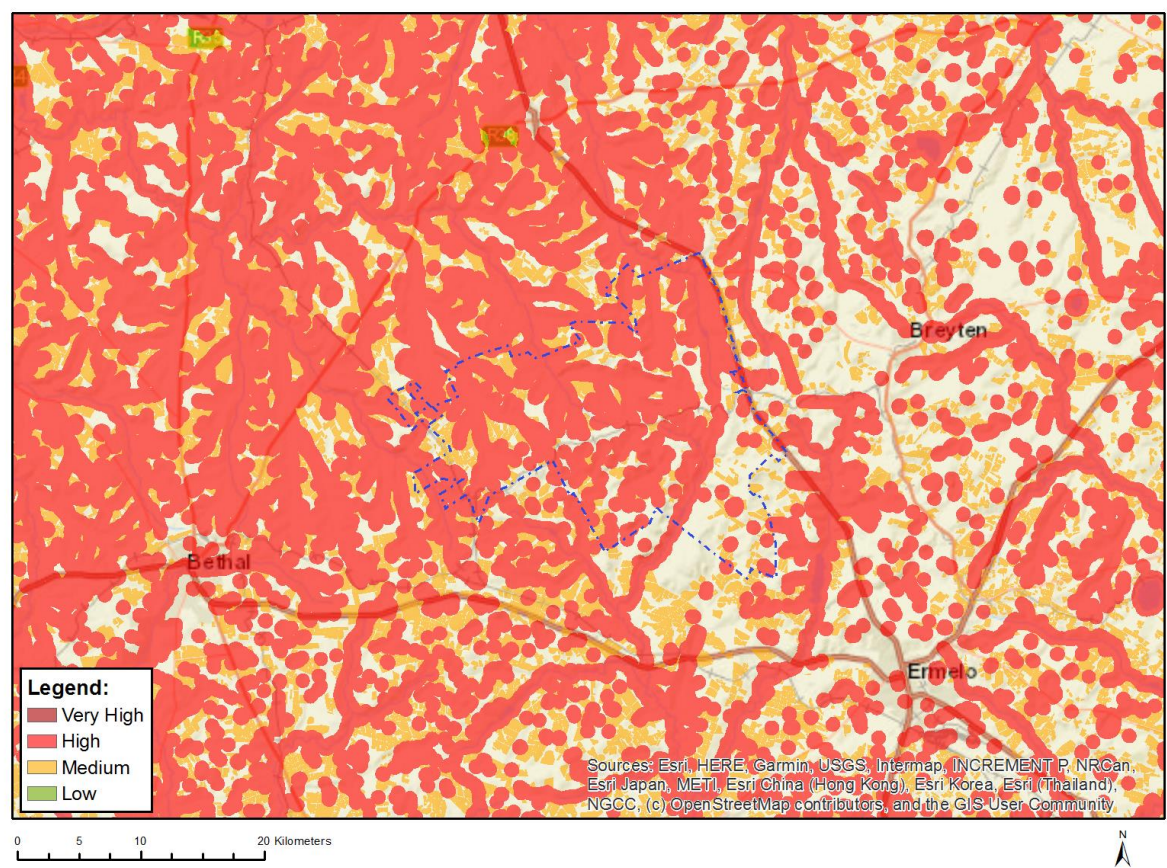


Very High sensitivity	High sensitivity	Medium sensitivity	Low sensitivity
			X

Sensitivity Features:

Sensitivity	Feature(s)
Low	Area Outside Sensitivities

MAP OF RELATIVE BATS (WIND) THEME SENSITIVITY

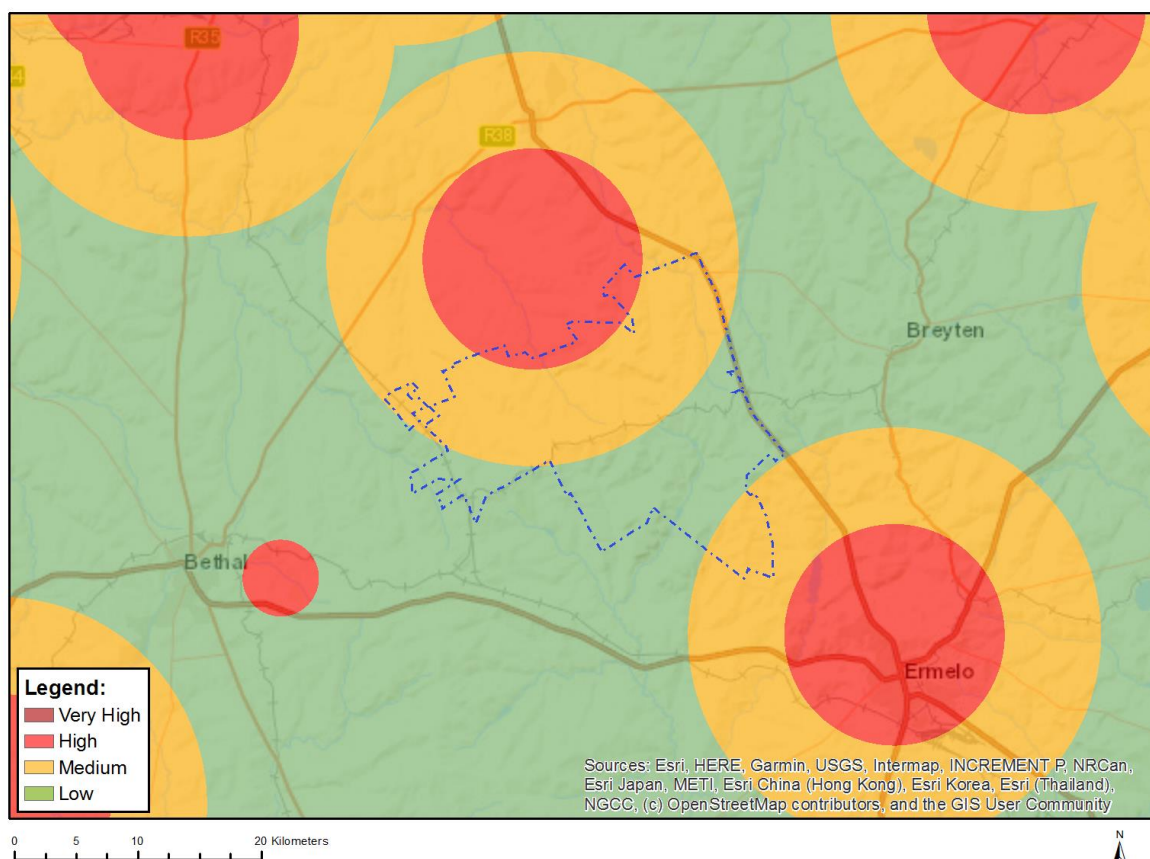


Very High sensitivity	High sensitivity	Medium sensitivity	Low sensitivity
	X		

Sensitivity Features:

Sensitivity	Feature(s)
High	Within 500 m of a river
High	Wetland
High	Within 500 m of a wetland
Medium	Croplands

MAP OF RELATIVE CIVIL AVIATION (WIND) THEME SENSITIVITY

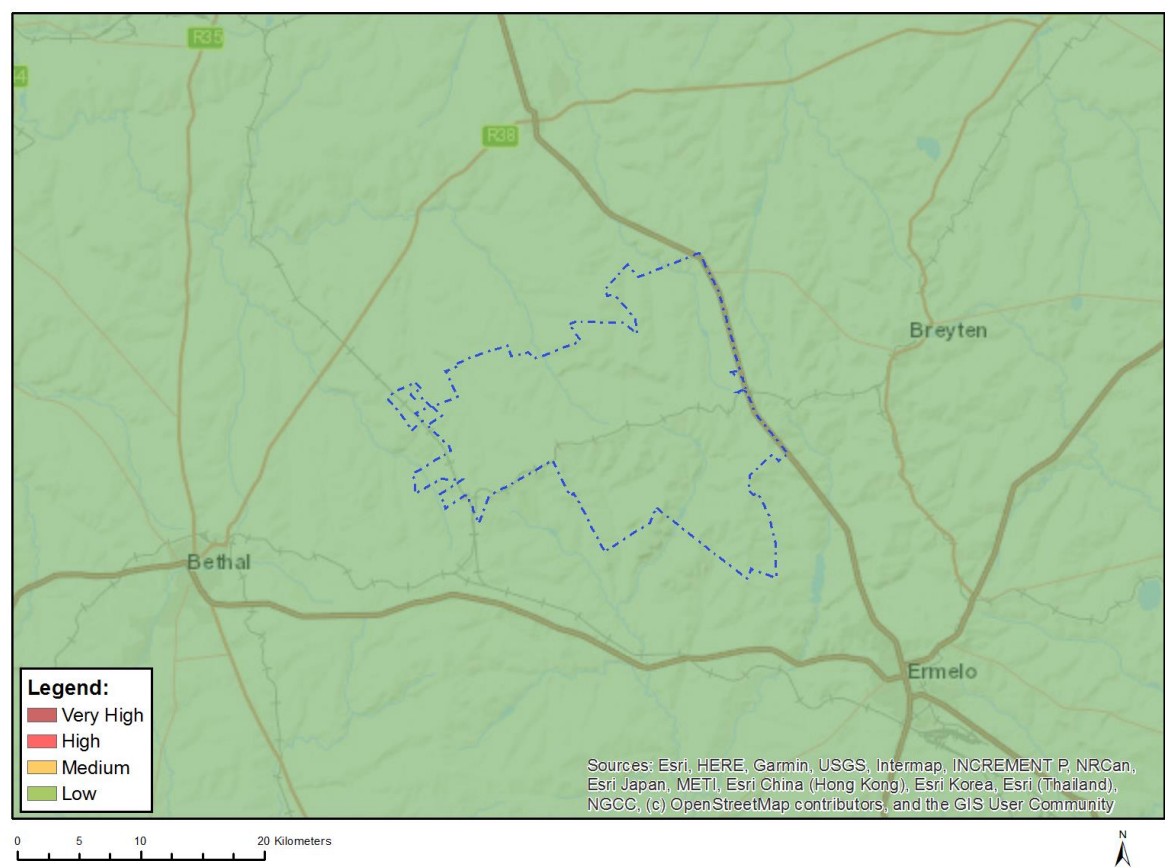


Very High sensitivity	High sensitivity	Medium sensitivity	Low sensitivity
	X		

Sensitivity Features:

Sensitivity	Feature(s)
High	Within 8 km of other civil aviation aerodrome
Low	Low sensitivity
Medium	Between 8 and 15 km of other civil aviation aerodrome

MAP OF RELATIVE DEFENCE (WIND) THEME SENSITIVITY



Very High sensitivity	High sensitivity	Medium sensitivity	Low sensitivity
			X

Sensitivity Features:

Sensitivity	Feature(s)
Low	Low sensitivity

MAP OF RELATIVE FLICKER THEME SENSITIVITY

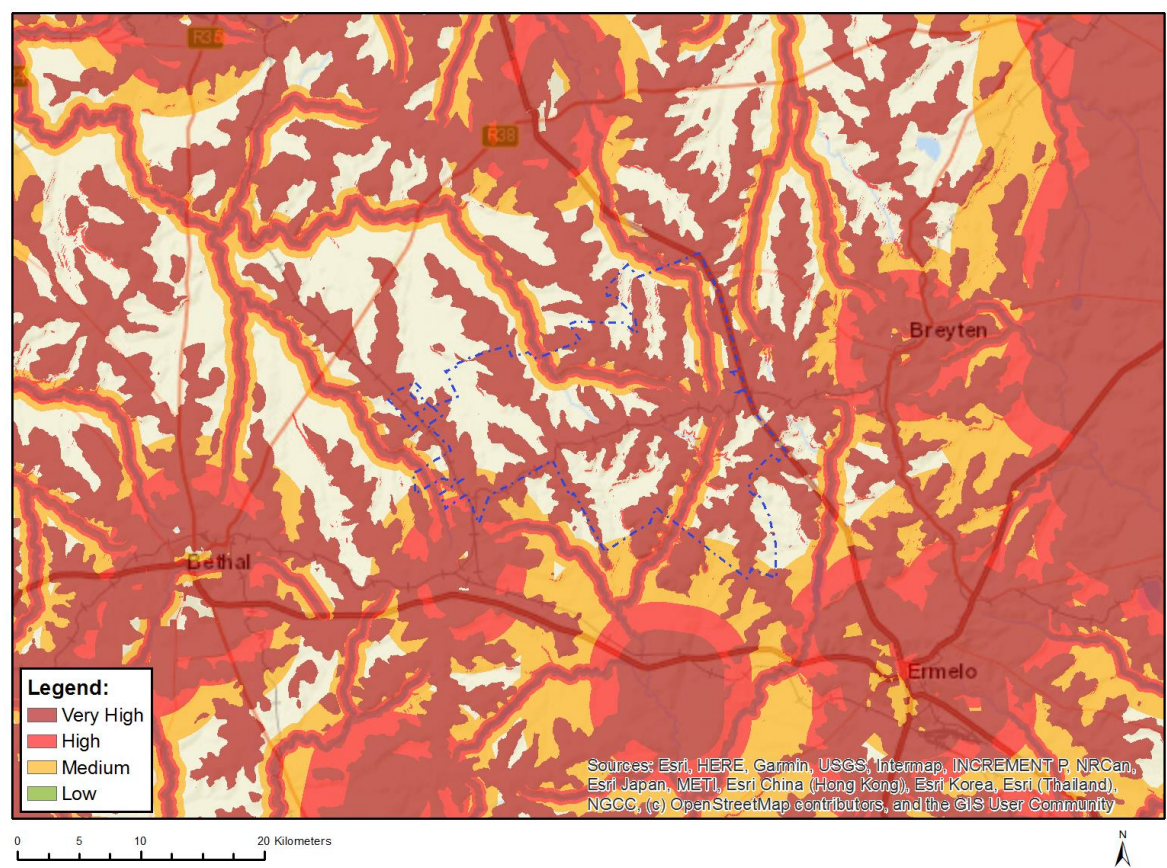


Very High sensitivity	High sensitivity	Medium sensitivity	Low sensitivity
X			

Sensitivity Features:

Sensitivity	Feature(s)
Low	Area of low sensitivity
Very High	Potential temporarily or permanently inhabited residence
Very High	Potential temporarily or permanently inhabited residence;Inside the boundaries of a town

MAP OF RELATIVE LANDSCAPE (WIND) THEME SENSITIVITY

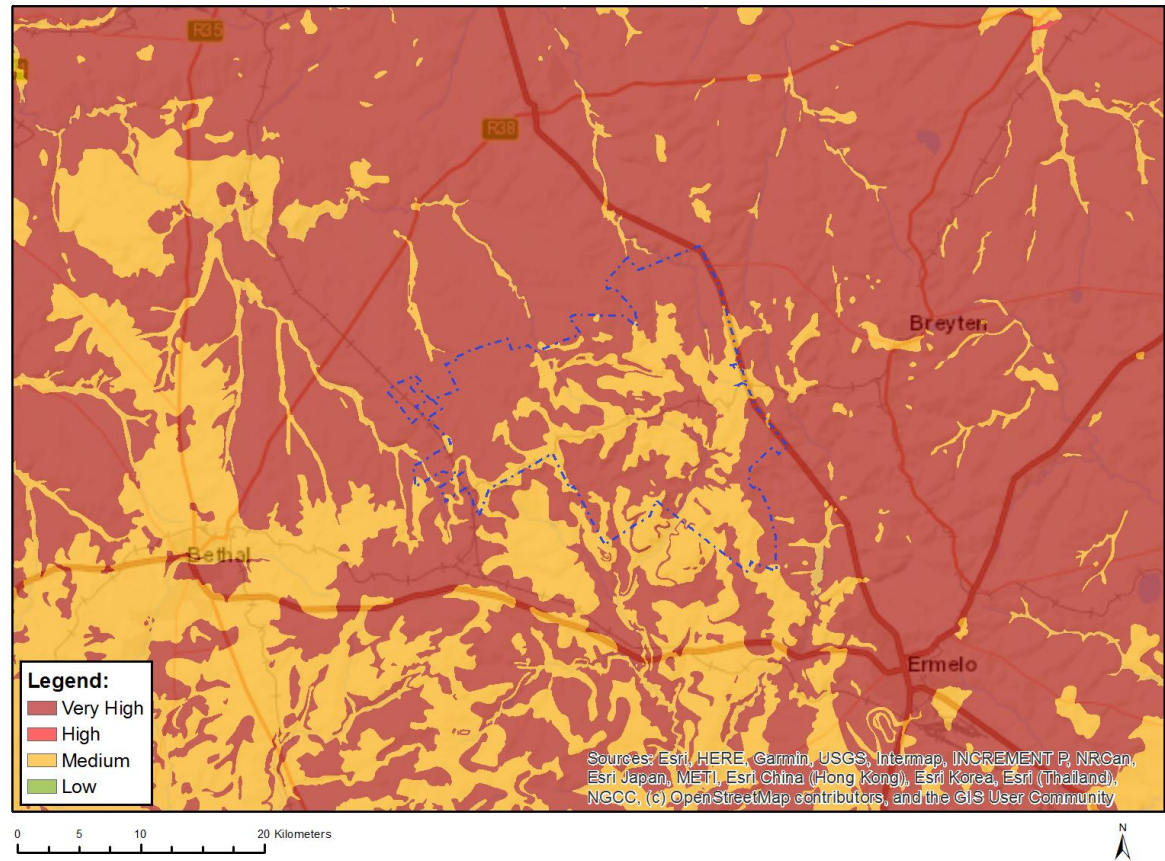


Very High sensitivity	High sensitivity	Medium sensitivity	Low sensitivity
X			

Sensitivity Features:

Sensitivity	Feature(s)
High	Between 2 and 4 km of a town or village
High	Slope between 1:4 and 1:10
Medium	Between 4 and 6 km of a town or village
Very High	Mountain tops and high ridges

MAP OF RELATIVE PALEONTOLOGY THEME SENSITIVITY

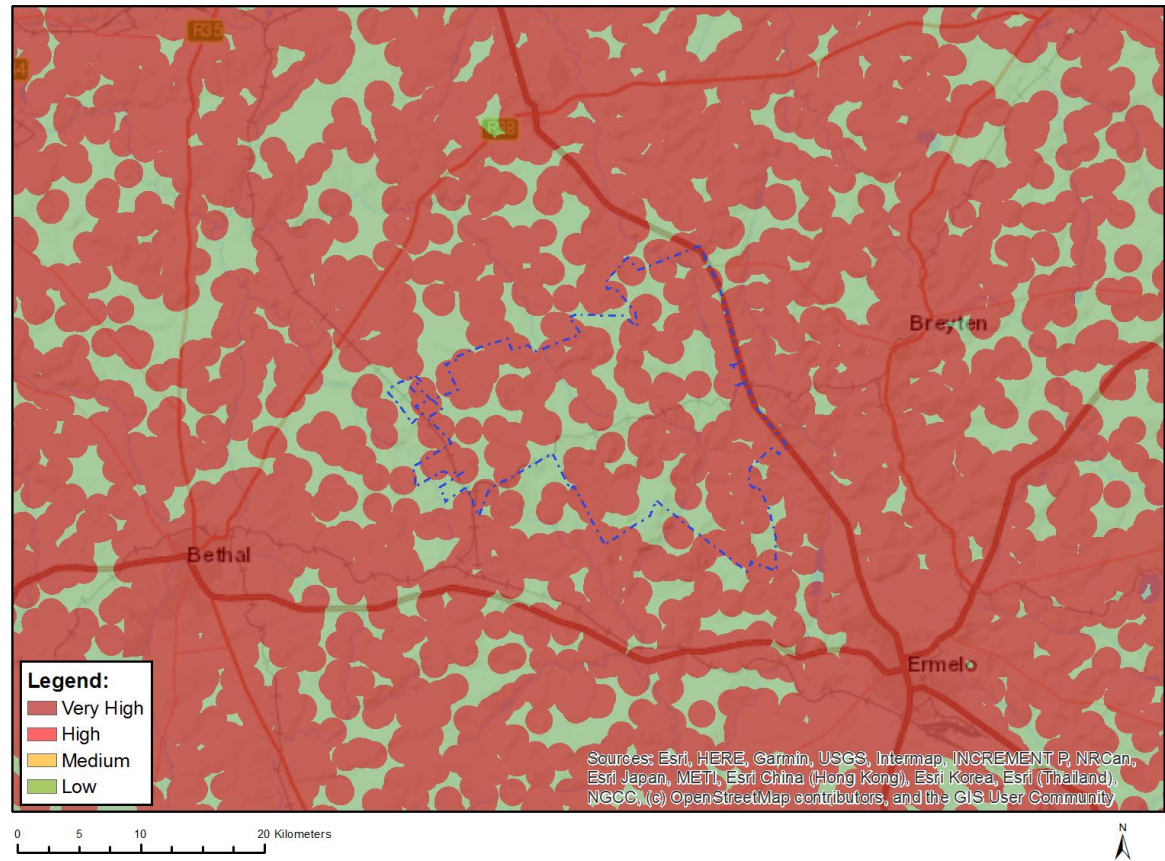


Very High sensitivity	High sensitivity	Medium sensitivity	Low sensitivity
X			

Sensitivity Features:

Sensitivity	Feature(s)
Medium	Features with a Medium paleontological sensitivity
Very High	Features with a Very High paleontological sensitivity

MAP OF RELATIVE NOISE THEME SENSITIVITY

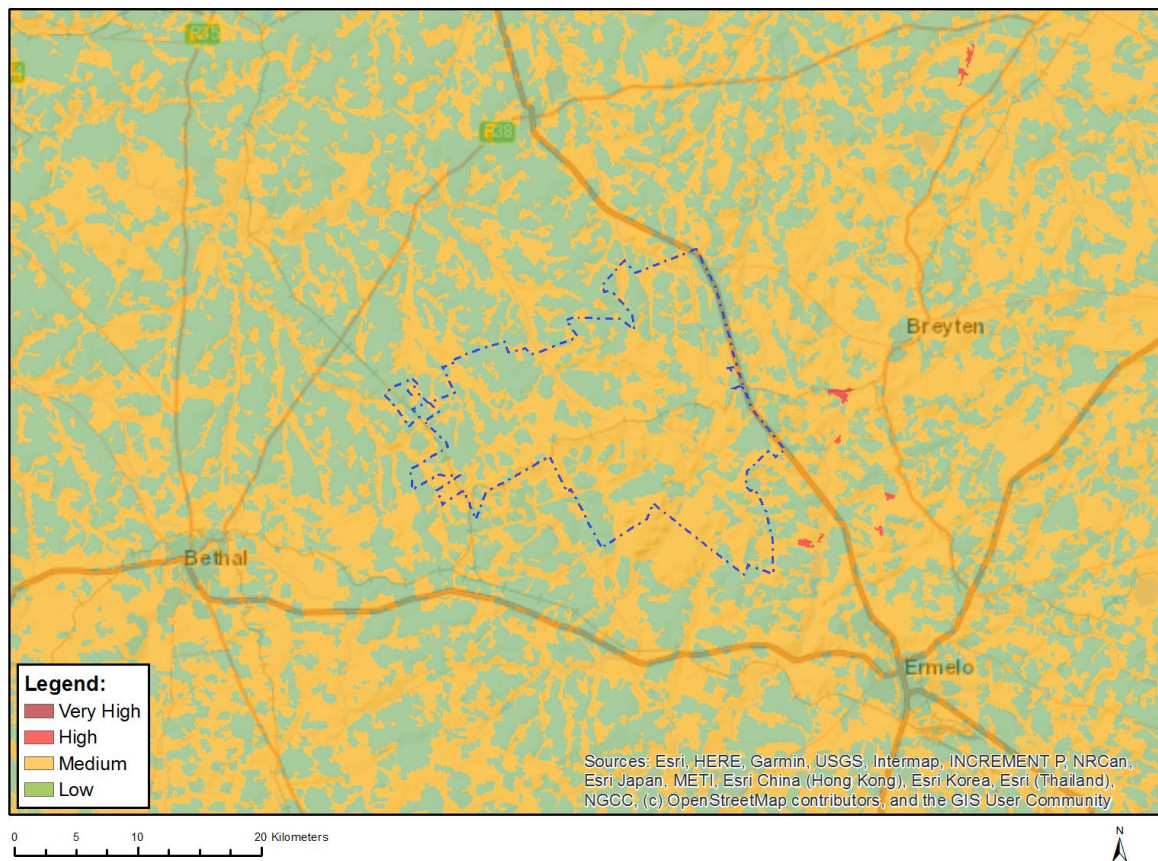


Very High sensitivity	High sensitivity	Medium sensitivity	Low sensitivity
X			

Sensitivity Features:

Sensitivity	Feature(s)
Low	Area of low sensitivity
Very High	Potential temporarily or permanently inhabited residence
Very High	Potential temporarily or permanently inhabited residence;Inside the boundaries of a town

MAP OF RELATIVE PLANT SPECIES THEME SENSITIVITY



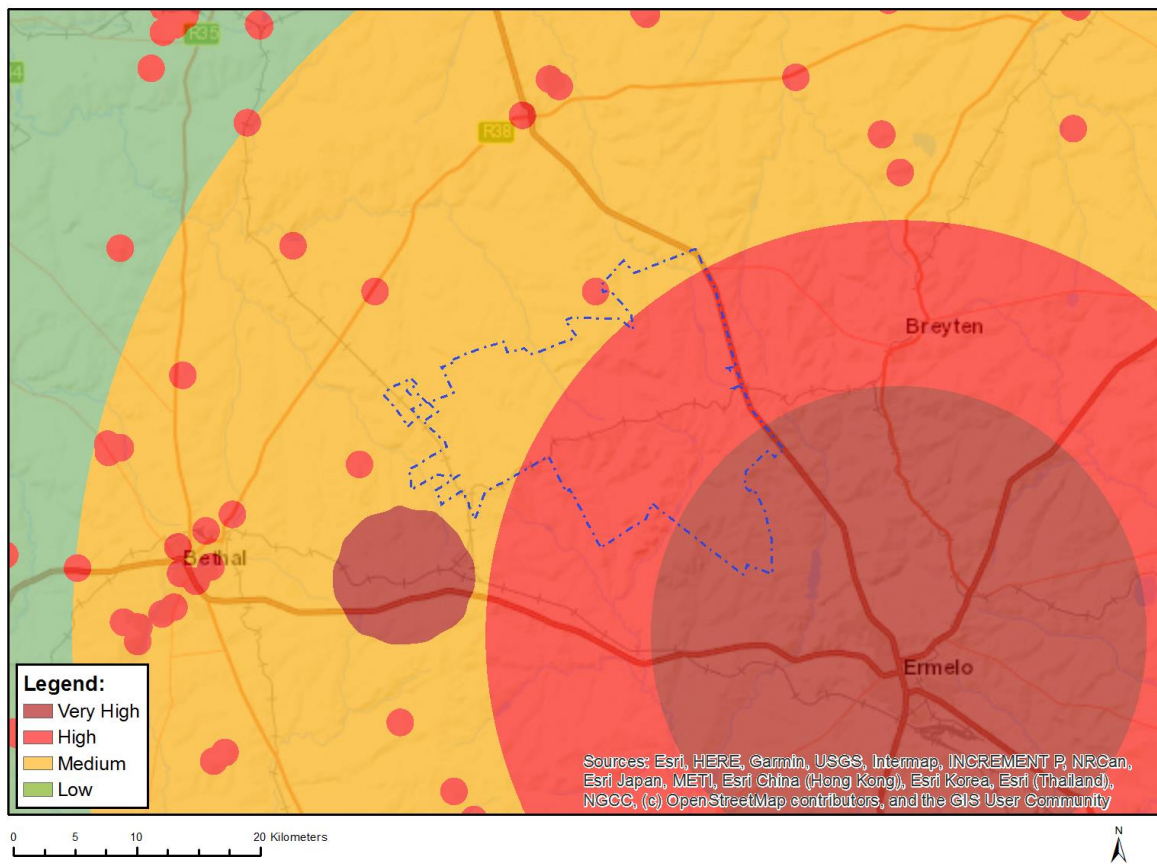
Where only a sensitive plant unique number or sensitive animal unique number is provided in the screening report and an assessment is required, the environmental assessment practitioner (EAP) or specialist is required to email SANBI at eiadatarequests@sanbi.org.za listing all sensitive species with their unique identifiers for which information is required. The name has been withheld as the species may be prone to illegal harvesting and must be protected. SANBI will release the actual species name after the details of the EAP or specialist have been documented.

Very High sensitivity	High sensitivity	Medium sensitivity	Low sensitivity
		X	

Sensitivity Features:

Sensitivity	Feature(s)
Low	Low Sensitivity
Medium	Sensitive species 1252
Medium	Khadia carolinensis
Medium	Sensitive species 1200
Medium	Aspidoglossum xanthosphaerum
Medium	Miraglossum davyi
Medium	Sensitive species 41
Medium	Sensitive species 691
Medium	Pachycarpus suaveolens
Medium	Sensitive species 851

MAP OF RELATIVE RFI (WIND) THEME SENSITIVITY

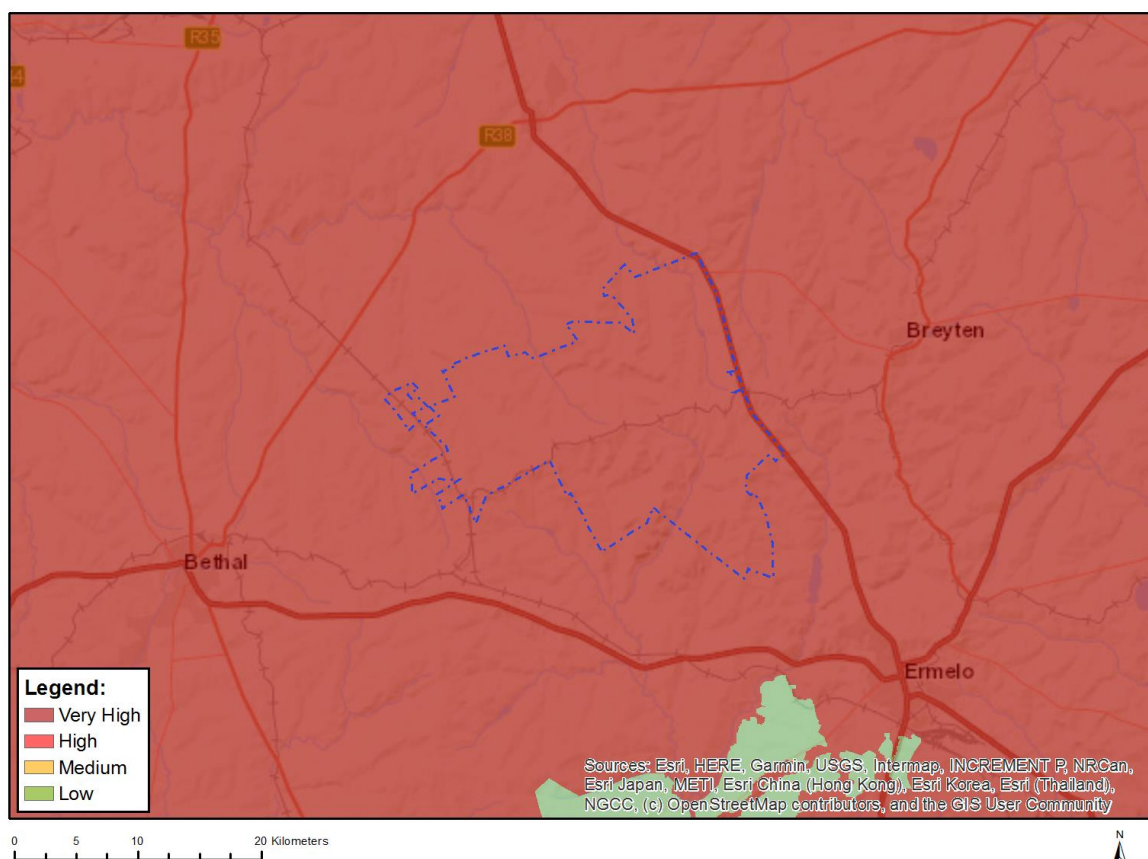


Very High sensitivity	High sensitivity	Medium sensitivity	Low sensitivity
X			

Sensitivity Features:

Sensitivity	Feature(s)
High	Low sensitivity for telecommunications;None;Between 18 and 30 km from a Weather Radar installation and within the radar's line of sight
High	Within 1 km of a telecommunication facility;None;Between 30 and 60 km from a Weather Radar installation and within the radar's line of sight
Medium	Low sensitivity for telecommunications;None;Between 30 and 60 km from a Weather Radar installation and within the radar's line of sight
Very High	Low sensitivity for telecommunications;None;Less than 18 km form a Weather Radar installation
Very High	Within 1 km of a telecommunication facility;None;Less than 18 km form a Weather Radar installation

MAP OF RELATIVE TERRESTRIAL BIODIVERSITY THEME SENSITIVITY



Very High sensitivity	High sensitivity	Medium sensitivity	Low sensitivity
X			

Sensitivity Features:

Sensitivity	Feature(s)
Very High	CBA 1
Very High	CBA 2
Very High	ESA: Landscape corridor
Very High	ESA: Local corridor
Very High	FEPA Subcatchment
Very High	National Protected Area Expansion Strategy (NPAES)
Very High	EN_Eastern Highveld Grassland
Very High	VU_Soweto Highveld Grassland

MAP OF RELATIVE VULTURE SPECIES THEME SENSITIVITY



Very High sensitivity	High sensitivity	Medium sensitivity	Low sensitivity
		X	

Sensitivity Features:

Sensitivity	Feature(s)
Medium	affecting an area between 5% - 10% of the population