

**SCREENING REPORT FOR AN ENVIRONMENTAL AUTHORIZATION AS
REQUIRED BY THE 2014 EIA REGULATIONS – PROPOSED SITE
ENVIRONMENTAL SENSITIVITY**

EIA Reference number: 41103718

Project name: AMSA BPO Logistics Hub

Project title: BAR

Date screening report generated: 14/05/2024 10:25:06

Applicant: AMSA

Compiler: WSP

Compiler signature:

Application Category: Infrastructure|Localised infrastructure|Storage|Dangerous
Goods|Chemicals

Table of Contents

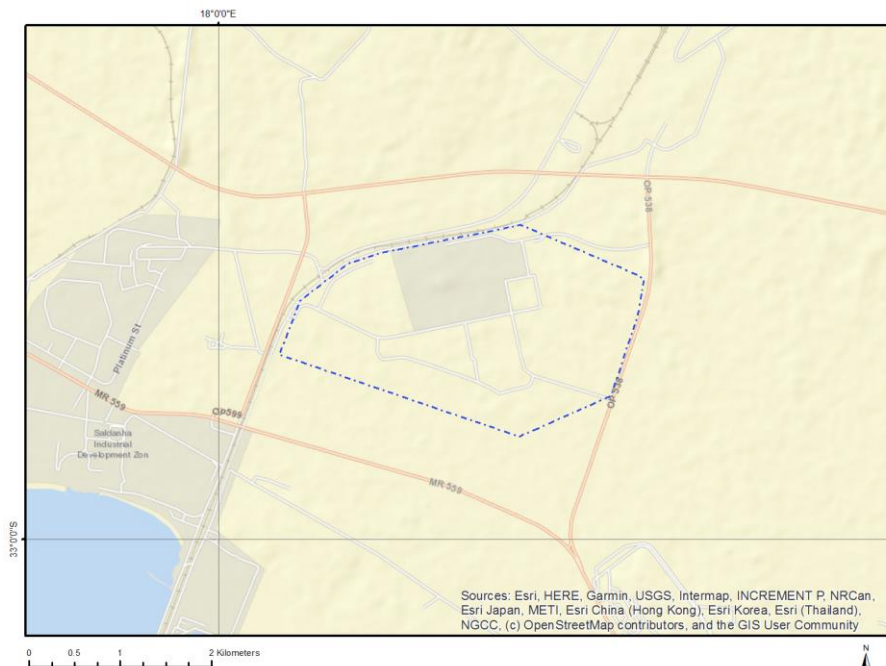
Proposed Project Location	3
Orientation map 1: General location	3
Map of proposed site and relevant area(s)	4
Cadastral details of the proposed site	4
Wind and Solar developments with an approved Environmental Authorisation or applications under consideration within 30 km of the proposed area	4
Environmental Management Frameworks relevant to the application	5
Environmental screening results and assessment outcomes	5
Relevant development incentives, restrictions, exclusions or prohibitions	5
Proposed Development Area Environmental Sensitivity	6
Specialist assessments identified	6
Results of the environmental sensitivity of the proposed area	8
MAP OF RELATIVE AGRICULTURE THEME SENSITIVITY	8
MAP OF RELATIVE ANIMAL SPECIES THEME SENSITIVITY	9
MAP OF RELATIVE AQUATIC BIODIVERSITY THEME SENSITIVITY	10
MAP OF RELATIVE ARCHAEOLOGICAL AND CULTURAL HERITAGE THEME SENSITIVITY	11
MAP OF RELATIVE CIVIL AVIATION THEME SENSITIVITY	12
MAP OF RELATIVE DEFENCE THEME SENSITIVITY	13
MAP OF RELATIVE PALEONTOLOGY THEME SENSITIVITY	14
MAP OF RELATIVE PLANT SPECIES THEME SENSITIVITY	15
MAP OF RELATIVE TERRESTRIAL BIODIVERSITY THEME SENSITIVITY	17

Proposed Project Location

Orientation map 1: General location



Map of proposed site and relevant area(s)



Cadastral details of the proposed site

Property details:

No	Farm Name	Farm/ Erf No	Portion	Latitude	Longitude	Property Type
1		1132	0	32°58'56.61S	18°1'31.25E	Farm
2		1132	1	32°58'48.48S	18°0'31.01E	Farm Portion
3		1132	0	32°59'9.01S	18°1'25.84E	Farm Portion
4		1132	0	32°58'56.61S	18°1'31.24E	Farm Portion

Development footprint¹ vertices:

No development footprint(s) specified.

Wind and Solar developments with an approved Environmental Authorisation or applications under consideration within 30 km of the proposed area

No	EIA Reference No	Classification	Status of application	Distance from proposed area (km)
1	12/12/20/1781/A1	Wind	Approved	12.4
2	12/12/20/2126/1/AM5	Solar PV	Approved	4.6
3	12/12/20/2126/1	Solar PV	Approved	4.6
4	14/12/16/3/3/2/1031	Solar PV	Approved	9.4

¹ “development footprint”, means the area within the site on which the development will take place and includes all ancillary developments for example roads, power lines, boundary walls, paving etc. which require vegetation clearance or which will be disturbed and for which the application has been submitted.

5	14/12/16/3/3/2/2053	Solar PV	Approved	12.8
6	12/12/20/2625	Solar PV	Approved	3
7	12/12/20/2157	Wind	Approved	17.5
8	14/12/16/3/3/1/2348	Solar PV	Approved	20.2
9	14/12/16/3/3/2/2020	Solar PV	Approved	1.1
10	12/12/20/2339	Wind	Approved	0
11	12/12/20/2626	Solar PV	Approved	4.2
12	12/12/20/2126/1/AM2	Solar PV	Approved	4.6
13	12/12/20/1781/AM2	Wind	Approved	12.4
14	12/12/20/2126/AM5	Solar PV	Approved	4.6
15	12/12/20/2126/AM6	Solar PV	Approved	4.6
16	14/12/16/3/3/1/2108	Wind	Approved	16.5
17	12/12/20/2126/AM2	Solar PV	Approved	4.6
18	12/12/20/2126	Solar PV	Approved	2.5
19	12/12/20/1581	Wind	Approved	15.8
20	12/12/20/1581/A3	Wind	Approved	15.8
21	12/12/20/2126/AM7	Solar PV	Approved	4.6
22	14/12/16/3/3/2/1144	Solar PV	Approved	25.7
23	12/12/20/1781/AM3	Wind	Approved	12.4
24	14/12/16/3/3/2/1057	Wind	Approved	17.5
25	12/12/20/1781	Wind	Approved	12.4

Environmental Management Frameworks relevant to the application

No intersections with EMF areas found.

Environmental screening results and assessment outcomes

The following sections contain a summary of any development incentives, restrictions, exclusions or prohibitions that apply to the proposed development site as well as the most environmental sensitive features on the site based on the site sensitivity screening results for the application classification that was selected. The application classification selected for this report is:

Infrastructure | Localised infrastructure | Storage | Dangerous Goods | Chemicals.

Relevant development incentives, restrictions, exclusions or prohibitions

The following development incentives, restrictions, exclusions or prohibitions and their implications that apply to this site are indicated below.

Incentive, restriction or prohibition	Implication
Strategic Transmission Corridor-Western corridor	https://screening.environment.gov.za/ScreeningDownloads/DevelopmentZones/Combined_EGI.pdf
Besaanskop Industrial Zone-Offset Needed	https://screening.environment.gov.za/ScreeningDownloads/DevelopmentZones/The_Saldanha_Strategic_Offset_Strategy_2020.pdf
Besaanskop Industrial Zone-Not Developable	https://screening.environment.gov.za/ScreeningDownloads/DevelopmentZones/The_Saldanha_Strategic_Offset_Strategy_2020.pdf
Besaanskop Industrial Zone-No Offset Needed	https://screening.environment.gov.za/ScreeningDownloads/DevelopmentZones/The_Saldanha_Strategic_Offset_Strategy_2020.pdf
Main Electricity Distribution Substation	https://screening.environment.gov.za/ScreeningDownloads/DevelopmentZones/The_Saldanha_Strategic_Offset_Strategy_2020.pdf

	tZones/Distribution Transmission.pdf
South African Conservation Areas	https://screening.environment.gov.za/ScreeningDownloads/DevelopmentZones/SACAD_OR_2023_Q4_Metadata.pdf

Proposed Development Area Environmental Sensitivity

The following summary of the development site environmental sensitivities is identified. Only the highest environmental sensitivity is indicated. The footprint environmental sensitivities for the proposed development footprint as identified, are indicative only and must be verified on site by a suitably qualified person before the specialist assessments identified below can be confirmed.

Theme	Very High sensitivity	High sensitivity	Medium sensitivity	Low sensitivity
Agriculture Theme		X		
Animal Species Theme		X		
Aquatic Biodiversity Theme	X			
Archaeological and Cultural Heritage Theme				X
Civil Aviation Theme		X		
Defence Theme			X	
Paleontology Theme	X			
Plant Species Theme			X	
Terrestrial Biodiversity Theme	X			

Specialist assessments identified

Based on the selected classification, and the known impacts associated with the proposed development, the following list of specialist assessments have been identified for inclusion in the assessment report. It is the responsibility of the EAP to confirm this list and to motivate in the assessment report, the reason for not including any of the identified specialist study including the provision of photographic evidence of the site situation.

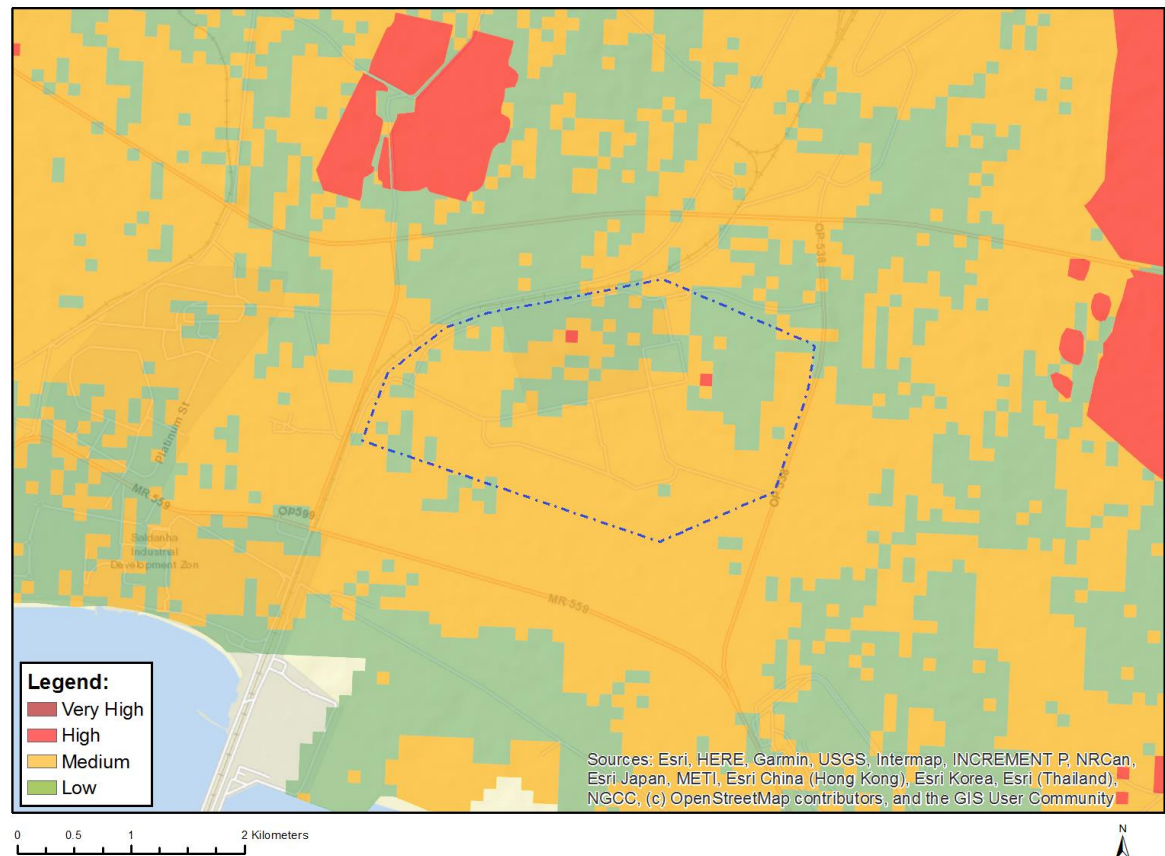
No	Specialist assessment	Assessment Protocol
1	Agricultural Impact Assessment	https://screening.environment.gov.za/ScreeningDownloads/AssessmentProtocols/Gazetted General Agriculture Assessment Protocols.pdf
2	Archaeological and Cultural Heritage Impact Assessment	https://screening.environment.gov.za/ScreeningDownloads/AssessmentProtocols/Gazetted General Requirement Assessment Protocols.pdf
3	Palaeontology Impact Assessment	https://screening.environment.gov.za/ScreeningDownloads/AssessmentProtocols/Gazetted General Requirement Assessment Protocols.pdf
4	Terrestrial Biodiversity Impact Assessment	https://screening.environment.gov.za/ScreeningDownloads/AssessmentProtocols/Gazetted Terrestrial Biodiversity Assessment Protocols.pdf
5	Aquatic Biodiversity Impact Assessment	https://screening.environment.gov.za/ScreeningDownloads/AssessmentProtocols/Gazetted Aquatic Biodiversity Assessment Protocols.pdf
6	Hydrology Assessment	https://screening.environment.gov.za/ScreeningDownloads/AssessmentProtocols/Gazetted General Requirement Assessment Protocols.pdf

		rotocols.pdf
7	Noise Impact Assessment	https://screening.environment.gov.za/ScreeningDownloads/AssessmentProtocols/Gazetted Noise Impacts Assessment Protocol.pdf
8	Traffic Impact Assessment	https://screening.environment.gov.za/ScreeningDownloads/AssessmentProtocols/Gazetted General Requirement Assessment Protocols.pdf
9	Geotechnical Assessment	https://screening.environment.gov.za/ScreeningDownloads/AssessmentProtocols/Gazetted General Requirement Assessment Protocols.pdf
10	Socio-Economic Assessment	https://screening.environment.gov.za/ScreeningDownloads/AssessmentProtocols/Gazetted General Requirement Assessment Protocols.pdf
11	Plant Species Assessment	https://screening.environment.gov.za/ScreeningDownloads/AssessmentProtocols/Gazetted Plant Species Assessment Protocols.pdf
12	Animal Species Assessment	https://screening.environment.gov.za/ScreeningDownloads/AssessmentProtocols/Gazetted Animal Species Assessment Protocols.pdf

Results of the environmental sensitivity of the proposed area.

The following section represents the results of the screening for environmental sensitivity of the proposed site for relevant environmental themes associated with the project classification. It is the duty of the EAP to ensure that the environmental themes provided by the screening tool are comprehensive and complete for the project. Refer to the disclaimer.

MAP OF RELATIVE AGRICULTURE THEME SENSITIVITY

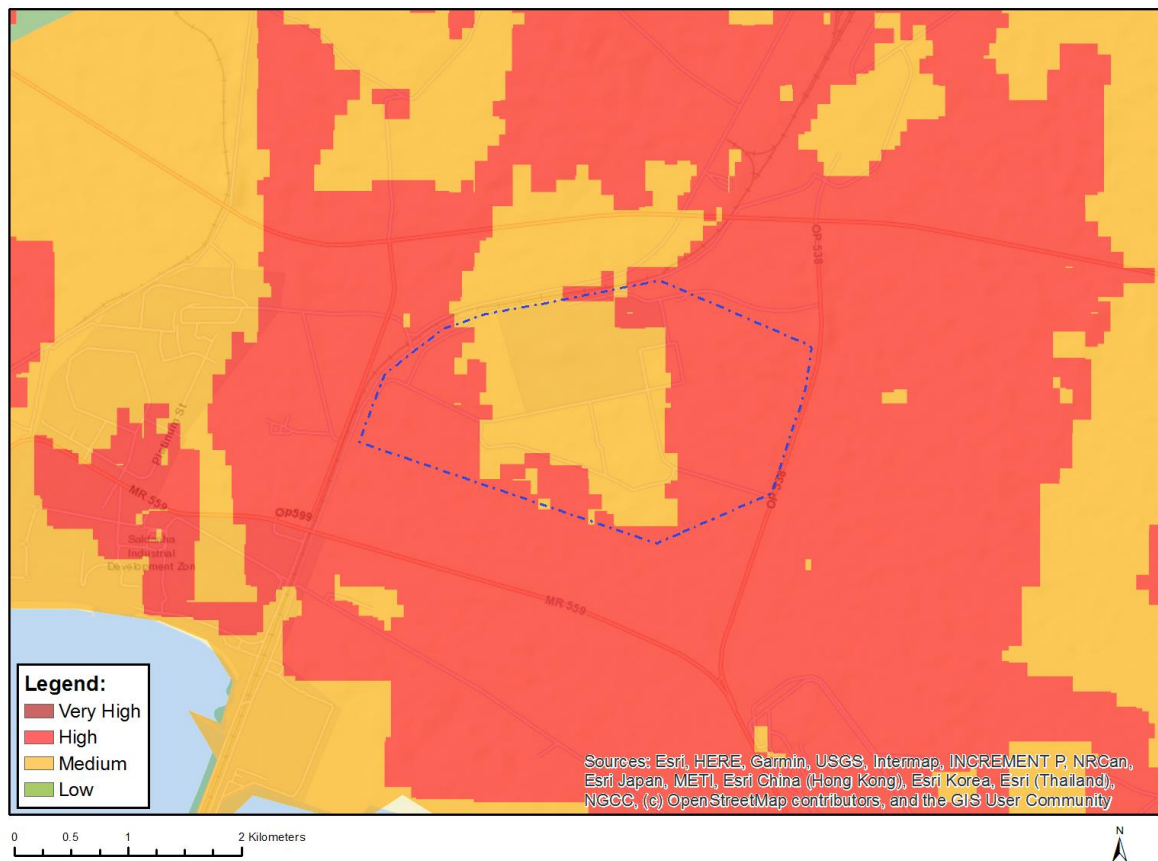


Very High sensitivity	High sensitivity	Medium sensitivity	Low sensitivity
	X		

Sensitivity Features:

Sensitivity	Feature(s)
High	Land capability;09. Moderate-High/10. Moderate-High
Low	Land capability;01. Very low/02. Very low/03. Low-Very low/04. Low-Very low/05. Low
Medium	Land capability;06. Low-Moderate/07. Low-Moderate/08. Moderate

MAP OF RELATIVE ANIMAL SPECIES THEME SENSITIVITY



Where only a sensitive plant unique number or sensitive animal unique number is provided in the screening report and an assessment is required, the environmental assessment practitioner (EAP) or specialist is required to email SANBI at eiadatarequests@sanbi.org.za listing all sensitive species with their unique identifiers for which information is required. The name has been withheld as the species may be prone to illegal harvesting and must be protected. SANBI will release the actual species name after the details of the EAP or specialist have been documented.

Very High sensitivity	High sensitivity	Medium sensitivity	Low sensitivity
	X		

Sensitivity Features:

Sensitivity	Feature(s)
High	Aves-Circus ranivorus
High	Aves-Falco biarmicus
High	Aves-Afrotis afra
High	Aves-Circus maurus
Medium	Aves-Hydroprogne caspia
Medium	Invertebrate-Bullacris obliqua

MAP OF RELATIVE AQUATIC BIODIVERSITY THEME SENSITIVITY

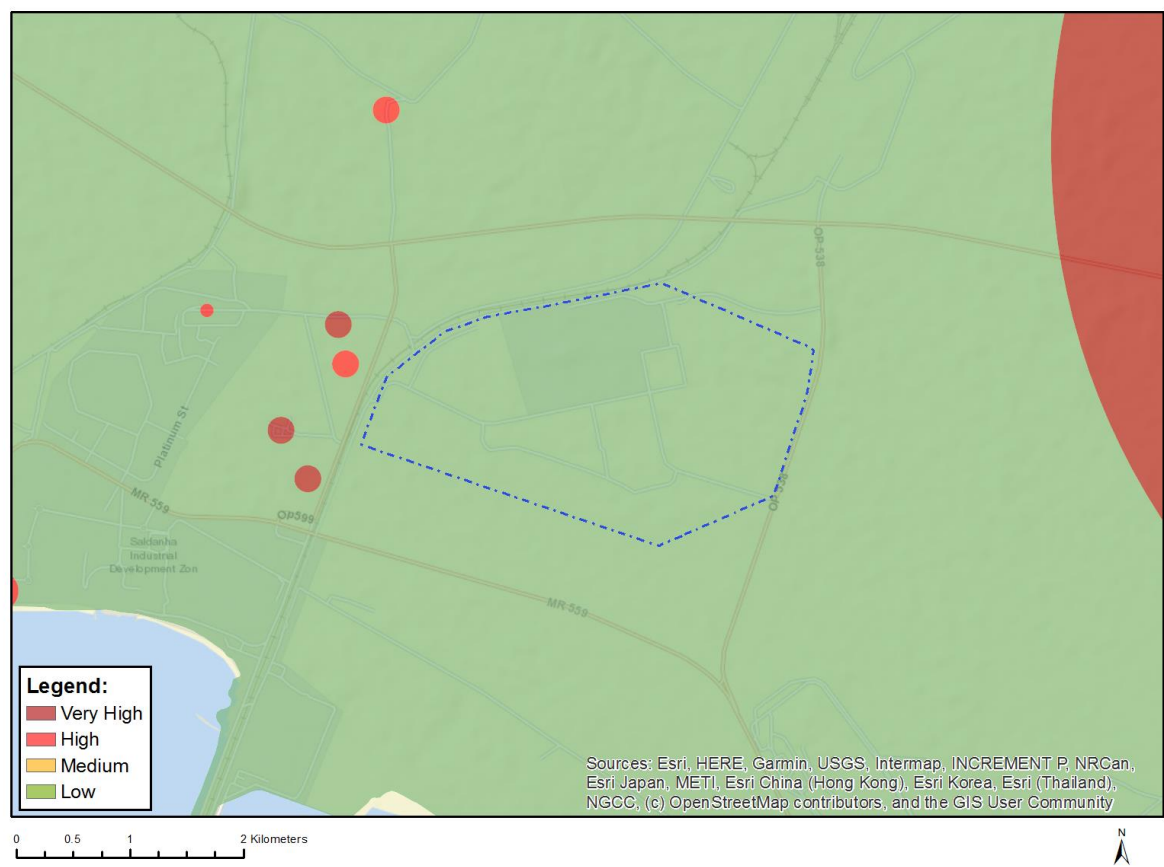


Very High sensitivity	High sensitivity	Medium sensitivity	Low sensitivity
X			

Sensitivity Features:

Sensitivity	Feature(s)
Low	Low sensitivity
Very High	CBA 1: Aquatic
Very High	ESA 1: Aquatic
Very High	Wetlands_ West Strandveld Bioregion (Depression)

MAP OF RELATIVE ARCHAEOLOGICAL AND CULTURAL HERITAGE THEME SENSITIVITY

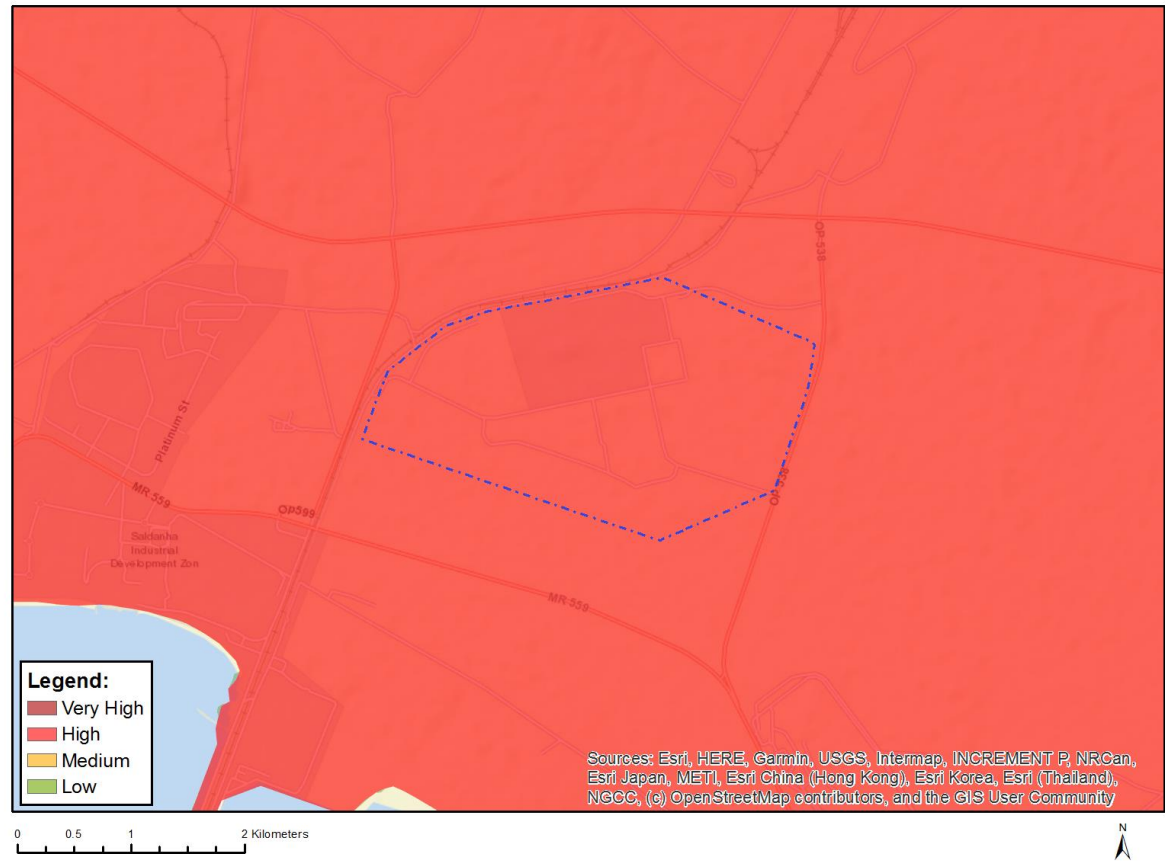


Very High sensitivity	High sensitivity	Medium sensitivity	Low sensitivity
			X

Sensitivity Features:

Sensitivity	Feature(s)
Low	Low sensitivity

MAP OF RELATIVE CIVIL AVIATION THEME SENSITIVITY

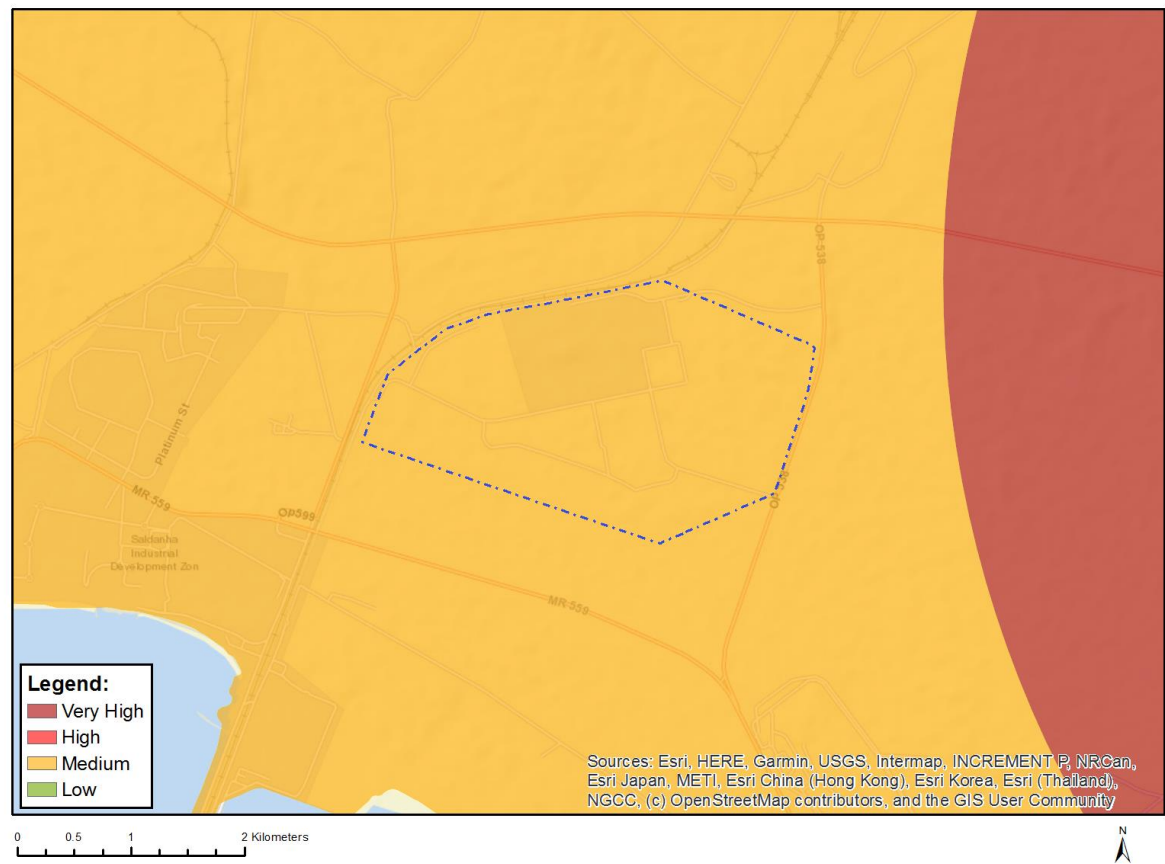


Very High sensitivity	High sensitivity	Medium sensitivity	Low sensitivity
	X		

Sensitivity Features:

Sensitivity	Feature(s)
High	Within 8 km of other civil aviation aerodrome
High	Dangerous and restricted airspace as demarcated

MAP OF RELATIVE DEFENCE THEME SENSITIVITY

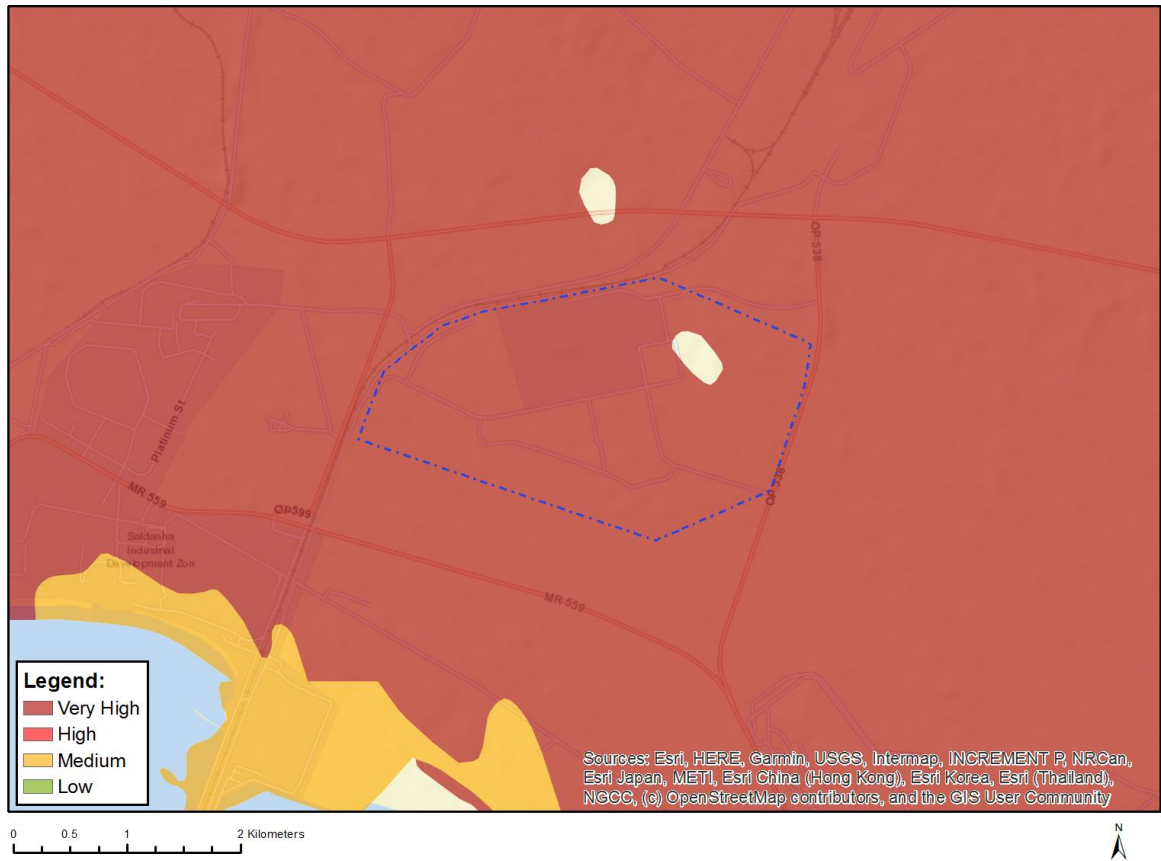


Very High sensitivity	High sensitivity	Medium sensitivity	Low sensitivity
		X	

Sensitivity Features:

Sensitivity	Feature(s)
Medium	Military and Defence Site

MAP OF RELATIVE PALEONTOLOGY THEME SENSITIVITY

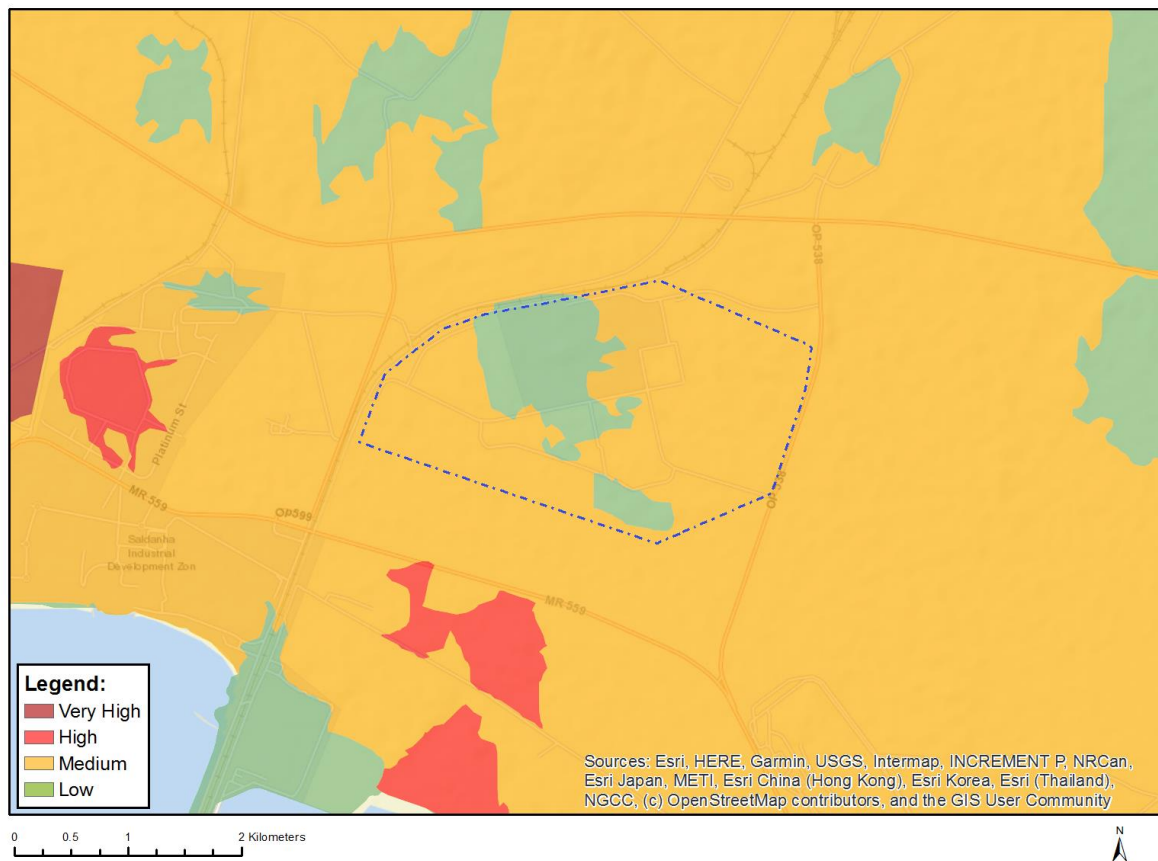


Very High sensitivity	High sensitivity	Medium sensitivity	Low sensitivity
X			

Sensitivity Features:

Sensitivity	Feature(s)
Very High	Features with a Very High paleontological sensitivity

MAP OF RELATIVE PLANT SPECIES THEME SENSITIVITY



Where only a sensitive plant unique number or sensitive animal unique number is provided in the screening report and an assessment is required, the environmental assessment practitioner (EAP) or specialist is required to email SANBI at eiadatarequests@sanbi.org.za listing all sensitive species with their unique identifiers for which information is required. The name has been withheld as the species may be prone to illegal harvesting and must be protected. SANBI will release the actual species name after the details of the EAP or specialist have been documented.

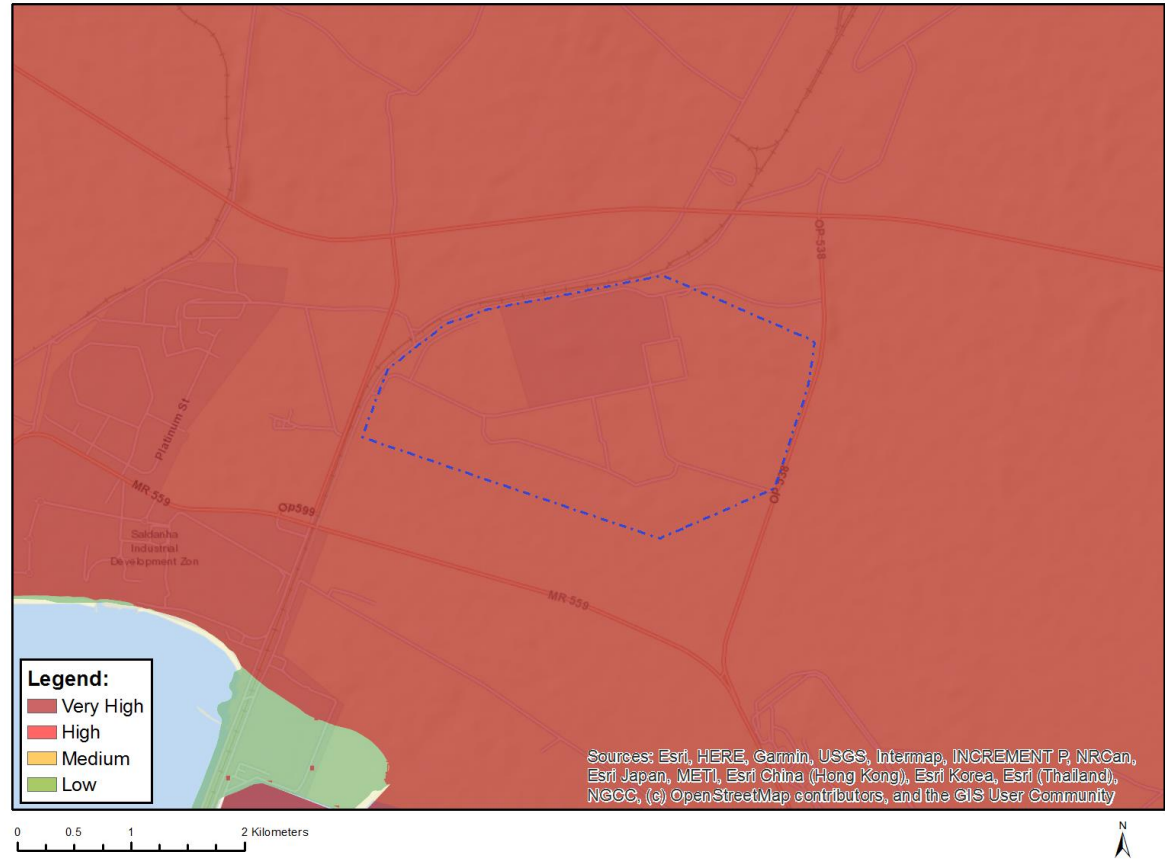
Very High sensitivity	High sensitivity	Medium sensitivity	Low sensitivity
		X	

Sensitivity Features:

Sensitivity	Feature(s)
Low	Low Sensitivity
Medium	Sensitive species 244
Medium	Antimima limbata
Medium	Ruschia cupulata
Medium	Ruschia langebaanensis
Medium	Ruschia tecta
Medium	Drosanthemum hispidifolium
Medium	Cephalophyllum rostellum
Medium	Indigofera platypoda
Medium	Otholobium venustum
Medium	Wiborgia fusca subsp. macrocarpa
Medium	Podalyria sericea
Medium	Leucadendron cinereum

Medium	<i>Leucospermum hypophyllocarpodendron</i> subsp. <i>canaliculatum</i>
Medium	<i>Manulea augei</i>
Medium	<i>Manulea corymbosa</i>
Medium	<i>Echiostachys spicatus</i>
Medium	Sensitive species 878
Medium	<i>Geissorhiza lewisiae</i>
Medium	<i>Sparaxis calcicola</i>
Medium	<i>Ixia purpureorosea</i>
Medium	Sensitive species 881
Medium	Sensitive species 816
Medium	<i>Romulea barkerae</i>
Medium	<i>Romulea saldanhensis</i>
Medium	Sensitive species 127
Medium	Sensitive species 272
Medium	<i>Ferraria densepunctulata</i>
Medium	<i>Ferraria parva</i>
Medium	<i>Pauridia longituba</i>
Medium	<i>Pauridia linearis</i>
Medium	<i>Empodium veratrifolium</i>
Medium	<i>Oxalis burtoniae</i>
Medium	<i>Oxalis subsessilis</i>
Medium	<i>Erica trichostigma</i>
Medium	<i>Hermannia procumbens</i> subsp. <i>myrrhifolia</i>
Medium	Sensitive species 222
Medium	Sensitive species 93
Medium	<i>Galenia crystallina</i> var. <i>maritima</i>
Medium	<i>Hessea mathewsii</i>
Medium	Sensitive species 840
Medium	<i>Annesorhiza calcicola</i>
Medium	Sensitive species 1243
Medium	<i>Cynanchum zeyheri</i>
Medium	<i>Felicia elongata</i>
Medium	<i>Steirodiscus tagetes</i>
Medium	<i>Cineraria angulosa</i>
Medium	<i>Cotula duckittiae</i>
Medium	<i>Cotula eckloniana</i>
Medium	<i>Osteospermum calcicola</i>
Medium	<i>Helichrysum bachmannii</i>
Medium	<i>Agathosma thymifolia</i>
Medium	<i>Limonium acuminatum</i>
Medium	<i>Limonium purpuratum</i>
Medium	<i>Muraltia harveyana</i>
Medium	Sensitive species 333
Medium	Sensitive species 156
Medium	<i>Silene ornata</i>
Medium	<i>Silene saldanhensis</i>
Medium	<i>Phylica greyii</i>
Medium	<i>Phylica harveyi</i>
Medium	<i>Wiborgiella dahlgrenii</i>
Medium	<i>Argyrolobium velutinum</i>
Medium	<i>Xiphotheca reflexa</i>
Medium	<i>Leucospermum rodolentum</i>
Medium	Sensitive species 599
Medium	<i>Cotula pusilla</i>
Medium	<i>Helichrysum dunense</i>
Medium	<i>Muraltia obovata</i>
Medium	Sensitive species 1225

MAP OF RELATIVE TERRESTRIAL BIODIVERSITY THEME SENSITIVITY



Very High sensitivity	High sensitivity	Medium sensitivity	Low sensitivity
X			

Sensitivity Features:

Sensitivity	Feature(s)
Very High	ESA 2: Restore from other land use
Very High	ESA 1
Very High	CBA 2: Terrestrial
Very High	CBA 1: Terrestrial
Very High	National Protected Area Expansion Strategy (NPAES)
Very High	EN_Saldanha Flats Strandveld
Very High	CR_Saldanha Limestone Strandveld