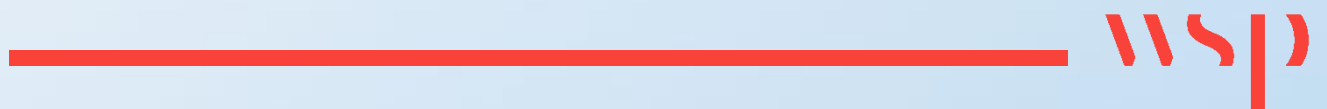


# Appendix I

## **DFFE SCREENING REPORT**



**SCREENING REPORT FOR AN ENVIRONMENTAL AUTHORIZATION AS  
REQUIRED BY THE 2014 EIA REGULATIONS – PROPOSED SITE  
ENVIRONMENTAL SENSITIVITY**

**EIA Reference number:** TBC

**Project name:** Phefumula Emoyeni One

**Project title:** 400kV Grid Connection

**Date screening report generated:** 18/02/2025 10:57:53

**Applicant:** Phefumula Emoyeni One (Pty) Ltd

**Compiler:** WSP Group Africa (Pty) Ltd

**Compiler signature:**

.....

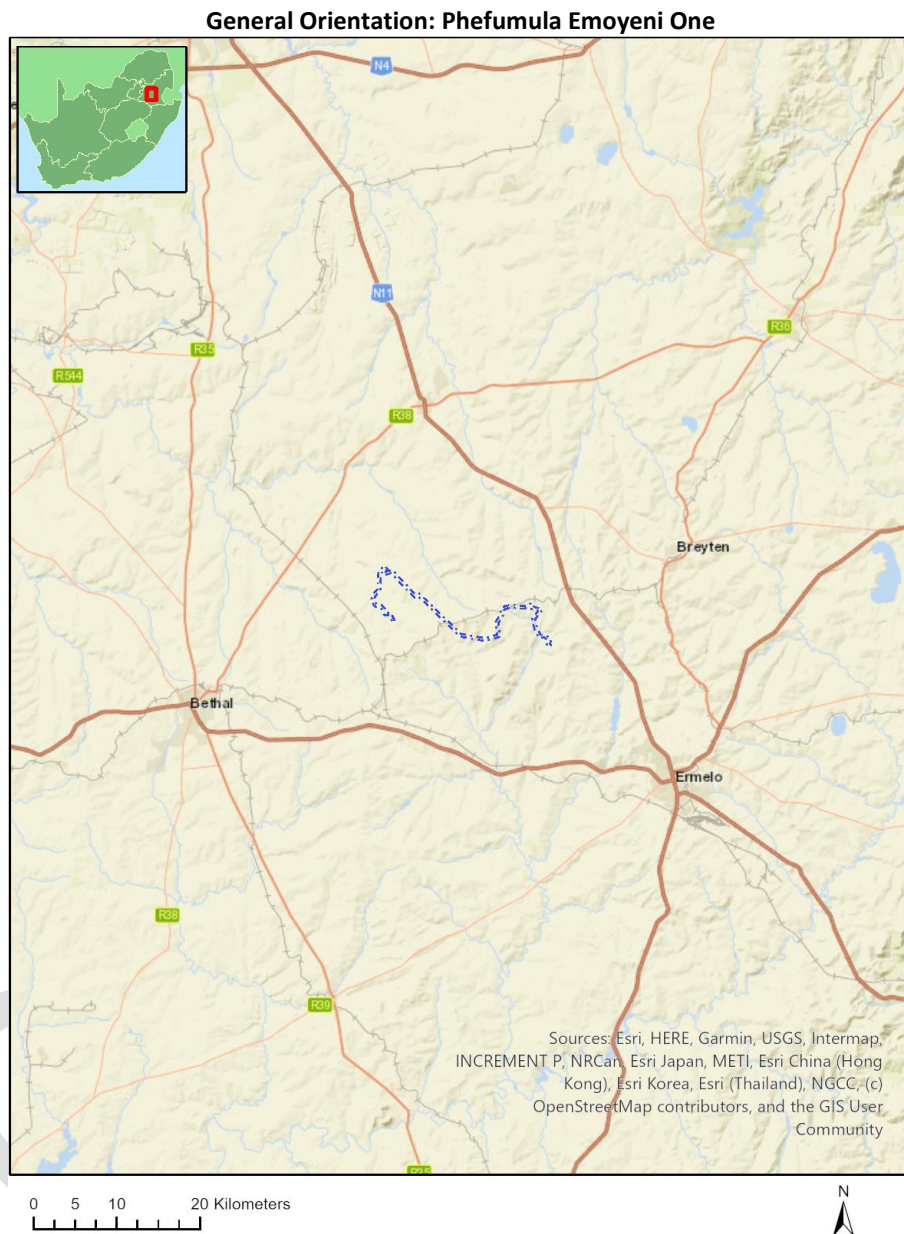
**Application Category:** Utilities Infrastructure | Electricity | Distribution and Transmission | Powerline

## Table of Contents

Proposed Project Location .....	3
Orientation map 1: General location .....	3
Map of proposed site and relevant area(s) .....	4
Cadastral details of the proposed site .....	4
Wind and Solar developments with an approved Environmental Authorisation or applications under consideration within 30 km of the proposed area .....	5
Environmental Management Frameworks relevant to the application .....	6
Environmental screening results and assessment outcomes .....	6
Relevant development incentives, restrictions, exclusions or prohibitions .....	6
Proposed Development Area Environmental Sensitivity .....	7
Specialist assessments identified .....	7
Results of the environmental sensitivity of the proposed area .....	9
MAP OF RELATIVE AGRICULTURE THEME SENSITIVITY .....	9
MAP OF RELATIVE ANIMAL SPECIES THEME SENSITIVITY .....	10
MAP OF RELATIVE AQUATIC BIODIVERSITY THEME SENSITIVITY .....	11
MAP OF RELATIVE ARCHAEOLOGICAL AND CULTURAL HERITAGE THEME SENSITIVITY .....	12
MAP OF RELATIVE CIVIL AVIATION THEME SENSITIVITY .....	13
MAP OF RELATIVE DEFENCE THEME SENSITIVITY .....	14
MAP OF RELATIVE PALEONTOLOGY THEME SENSITIVITY .....	15
MAP OF RELATIVE PLANT SPECIES THEME SENSITIVITY .....	16
MAP OF RELATIVE TERRESTRIAL BIODIVERSITY THEME SENSITIVITY .....	17

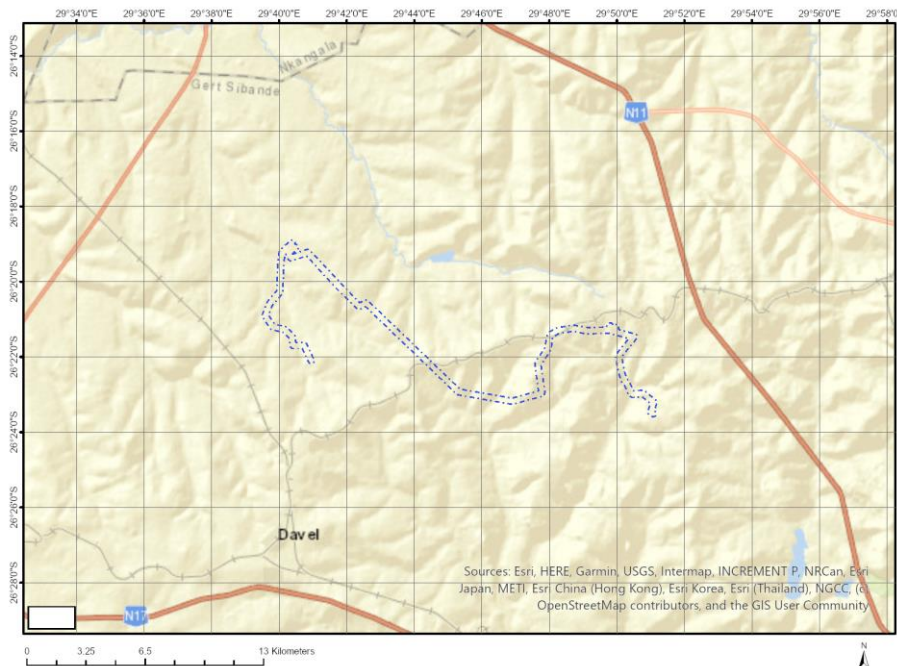
# Proposed Project Location

## Orientation map 1: General location





## Map of proposed site and relevant area(s)



## Cadastral details of the proposed site

Property details:

No	Farm Name	Farm/ Erf No	Portion	Latitude	Longitude	Property Type
1	VOORZORG	250	0	26°21'56.22S	29°44'8.98E	Farm
2	KUILFONTEIN	234	0	26°20'18.34S	29°39'34.59E	Farm
3	NOOITGEDACHT	251	0	26°22'31.52S	29°41'18.8E	Farm
4	KRANSPOORT	248	0	26°22'25.45S	29°51'27.82E	Farm
5	TWEEFONTEIN	249	0	26°23'34.65S	29°46'35.11E	Farm
6	NOOITGEDACHT	237	0	26°19'29.87S	29°47'28.1E	Farm
7	WITBANK	236	0	26°19'41.46S	29°42'52.12E	Farm
8	NOOITGEDACHT	251	10	26°22'11.96S	29°40'24.15E	Farm Portion
9	NOOITGEDACHT	251	6	26°21'43.62S	29°40'47.82E	Farm Portion
10	NOOITGEDACHT	251	0	26°20'49.42S	29°41'55.36E	Farm Portion
11	VOORZORG	250	0	26°21'56.22S	29°44'8.98E	Farm Portion
12	TWEEFONTEIN	249	2	26°22'31.55S	29°46'8.05E	Farm Portion
13	TWEEFONTEIN	249	9	26°22'56.66S	29°48'6.32E	Farm Portion
14	TWEEFONTEIN	249	8	26°24'58.09S	29°46'51.61E	Farm Portion
15	KRANSPOORT	248	3	26°23'47.98S	29°51'6.52E	Farm Portion
16	KRANSPOORT	248	23	26°22'15.79S	29°50'1.38E	Farm Portion
17	KRANSPOORT	248	24	26°22'55.71S	29°50'7.16E	Farm Portion
18	KRANSPOORT	248	4	26°22'19.1S	29°50'41.27E	Farm Portion
19	KRANSPOORT	248	2	26°21'33.74S	29°50'0.5E	Farm Portion
20	KRANSPOORT	248	20	26°21'29.03S	29°49'32.63E	Farm Portion
21	KRANSPOORT	248	18	26°21'54.15S	29°49'21.47E	Farm Portion
22	KRANSPOORT	248	6	26°21'17.54S	29°49'14.3E	Farm Portion
23	KRANSPOORT	248	0	26°22'49.48S	29°51'29.93E	Farm Portion
24	NOOITGEDACHT	237	4	26°20'59.98S	29°47'31.63E	Farm Portion
25	NOOITGEDACHT	237	1	26°21'17.51S	29°48'28.3E	Farm Portion
26	NOOITGEDACHT	237	0	26°20'18.3S	29°48'46.4E	Farm Portion
27	NOOITGEDACHT	237	3	26°21'13.74S	29°48'38.27E	Farm Portion

28	WITBANK	236	5	26°21'25.92S	29°43'20.11E	Farm Portion
29	WITBANK	236	10	26°20'23.66S	29°42'21.85E	Farm Portion
30	WITBANK	236	2	26°20'55.04S	29°43'24.7E	Farm Portion
31	KUILFONTEIN	234	23	26°19'12.14S	29°40'10.34E	Farm Portion
32	KUILFONTEIN	234	2	26°19'44.66S	29°40'30.71E	Farm Portion
33	KUILFONTEIN	234	17	26°20'49.08S	29°39'54.09E	Farm Portion
34	KUILFONTEIN	234	21	26°21'3.34S	29°39'14.46E	Farm Portion
35	KUILFONTEIN	234	14	26°21'26.83S	29°39'40.42E	Farm Portion
36	KUILFONTEIN	234	1	26°19'59.93S	29°41'15.84E	Farm Portion

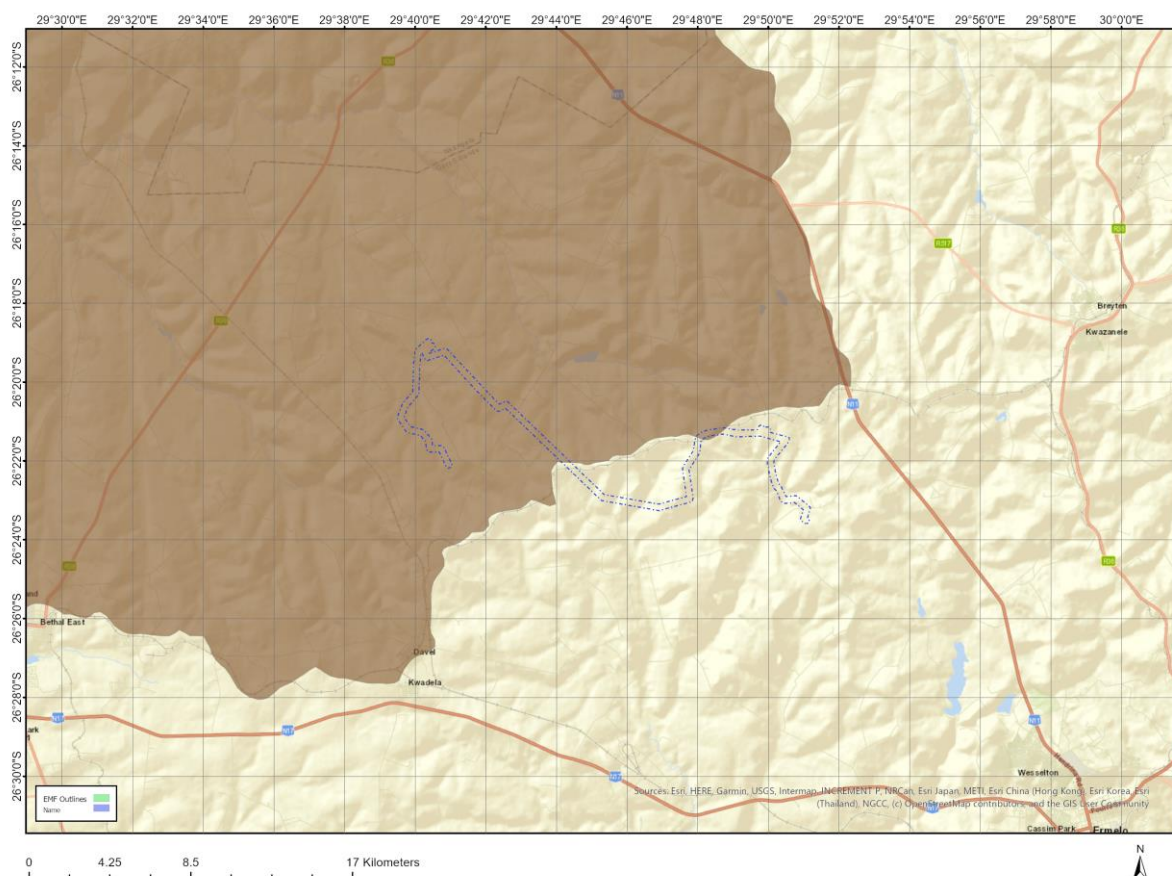
Development footprint<sup>1</sup> vertices:  
No development footprint(s) specified.

### Wind and Solar developments with an approved Environmental Authorisation or applications under consideration within 30 km of the proposed area

No	EIA Reference No	Classification	Status of application	Distance from proposed area (km)
1	14/12/16/3/3/2/2161	Wind	Approved	13.2
2	14/12/16/3/3/1/2657	Wind	Approved	20.5
3	14/12/16/3/3/2/2130	Wind	Approved	15.7
4	14/12/16/3/3/2/2131	Wind	Approved	13.4
5	14/12/16/3/3/2/2162	Wind	Approved	13.2
6	14/12/16/3/3/2/2160	Wind	Approved	13.2

<sup>1</sup> “development footprint”, means the area within the site on which the development will take place and includes all ancillary developments for example roads, power lines, boundary walls, paving etc. which require vegetation clearance or which will be disturbed and for which the application has been submitted.

## Environmental Management Frameworks relevant to the application



Environmental Management Framework	LINK
Olifants EMF	<a href="https://screening.environment.gov.za/ScreeningDownloads/EMF/Zone_4_6,_67,_78,_80,_92,_103,_122,_129.pdf">https://screening.environment.gov.za/ScreeningDownloads/EMF/Zone_4_6, 67, 78, 80, 92, 103, 122, 129.pdf</a>

## Environmental screening results and assessment outcomes

The following sections contain a summary of any development incentives, restrictions, exclusions or prohibitions that apply to the proposed development site as well as the most environmental sensitive features on the site based on the site sensitivity screening results for the application classification that was selected. The application classification selected for this report is:

**Utilities Infrastructure|Electricity|Distribution and Transmission|Powerline.**

### Relevant development incentives, restrictions, exclusions or prohibitions

The following development incentives, restrictions, exclusions or prohibitions and their implications that apply to this site are indicated below.

Incentive, restriction or prohibition	Implication
Air Quality-Highveld Priority Area	<a href="https://screening.environment.gov.za/ScreeningDownloads/Developmen">https://screening.environment.gov.za/ScreeningDownloads/Developmen</a>

	<a href="#">tZones/HIGHVELD_PRIORITY_AREA_AQMP.pdf</a>
Strategic Gas Pipeline Corridors-Phase 8: Rompco Pipeline Corridor	<a href="https://screening.environment.gov.za/ScreeningDownloads/DevelopmentZones/Combined_GAS.pdf">https://screening.environment.gov.za/ScreeningDownloads/DevelopmentZones/Combined_GAS.pdf</a>

### Proposed Development Area Environmental Sensitivity

The following summary of the development site environmental sensitivities is identified. Only the highest environmental sensitivity is indicated. The footprint environmental sensitivities for the proposed development footprint as identified, are indicative only and must be verified on site by a suitably qualified person before the specialist assessments identified below can be confirmed.

Theme	Very High sensitivity	High sensitivity	Medium sensitivity	Low sensitivity
Agriculture Theme	X			
Animal Species Theme		X		
Aquatic Biodiversity Theme	X			
Archaeological and Cultural Heritage Theme				X
Civil Aviation Theme			X	
Defence Theme				X
Paleontology Theme	X			
Plant Species Theme			X	
Terrestrial Biodiversity Theme	X			

### Specialist assessments identified

Based on the selected classification, and the known impacts associated with the proposed development, the following list of specialist assessments have been identified for inclusion in the assessment report. It is the responsibility of the EAP to confirm this list and to motivate in the assessment report, the reason for not including any of the identified specialist study including the provision of photographic evidence of the site situation.

No	Specialist assessment	Assessment Protocol
1	Agricultural Impact Assessment	<a href="https://screening.environment.gov.za/ScreeningDownloads/AssessmentProtocols/Gazetted_General_Agriculture_Assessment_Protocols.pdf">https://screening.environment.gov.za/ScreeningDownloads/AssessmentProtocols/Gazetted_General_Agriculture_Assessment_Protocols.pdf</a>
2	Landscape/Visual Impact Assessment	<a href="https://screening.environment.gov.za/ScreeningDownloads/AssessmentProtocols/Gazetted_General_Requirement_Assessment_Protocols.pdf">https://screening.environment.gov.za/ScreeningDownloads/AssessmentProtocols/Gazetted_General_Requirement_Assessment_Protocols.pdf</a>
3	Archaeological and Cultural Heritage Impact Assessment	<a href="https://screening.environment.gov.za/ScreeningDownloads/AssessmentProtocols/Gazetted_General_Requirement_Assessment_Protocols.pdf">https://screening.environment.gov.za/ScreeningDownloads/AssessmentProtocols/Gazetted_General_Requirement_Assessment_Protocols.pdf</a>
4	Palaeontology Impact Assessment	<a href="https://screening.environment.gov.za/ScreeningDownloads/AssessmentProtocols/Gazetted_General_Requirement_Assessment_Protocols.pdf">https://screening.environment.gov.za/ScreeningDownloads/AssessmentProtocols/Gazetted_General_Requirement_Assessment_Protocols.pdf</a>
5	Terrestrial Biodiversity Impact Assessment	<a href="https://screening.environment.gov.za/ScreeningDownloads/AssessmentProtocols/Gazetted_Terrestrial_Biodiversity_Assessment_Protocols.pdf">https://screening.environment.gov.za/ScreeningDownloads/AssessmentProtocols/Gazetted_Terrestrial_Biodiversity_Assessment_Protocols.pdf</a>
6	Aquatic Biodiversity Impact Assessment	<a href="https://screening.environment.gov.za/ScreeningDownloads/AssessmentProtocols/Gazetted_Aquatic_Biodiversity_Assessment_Protocols.pdf">https://screening.environment.gov.za/ScreeningDownloads/AssessmentProtocols/Gazetted_Aquatic_Biodiversity_Assessment_Protocols.pdf</a>

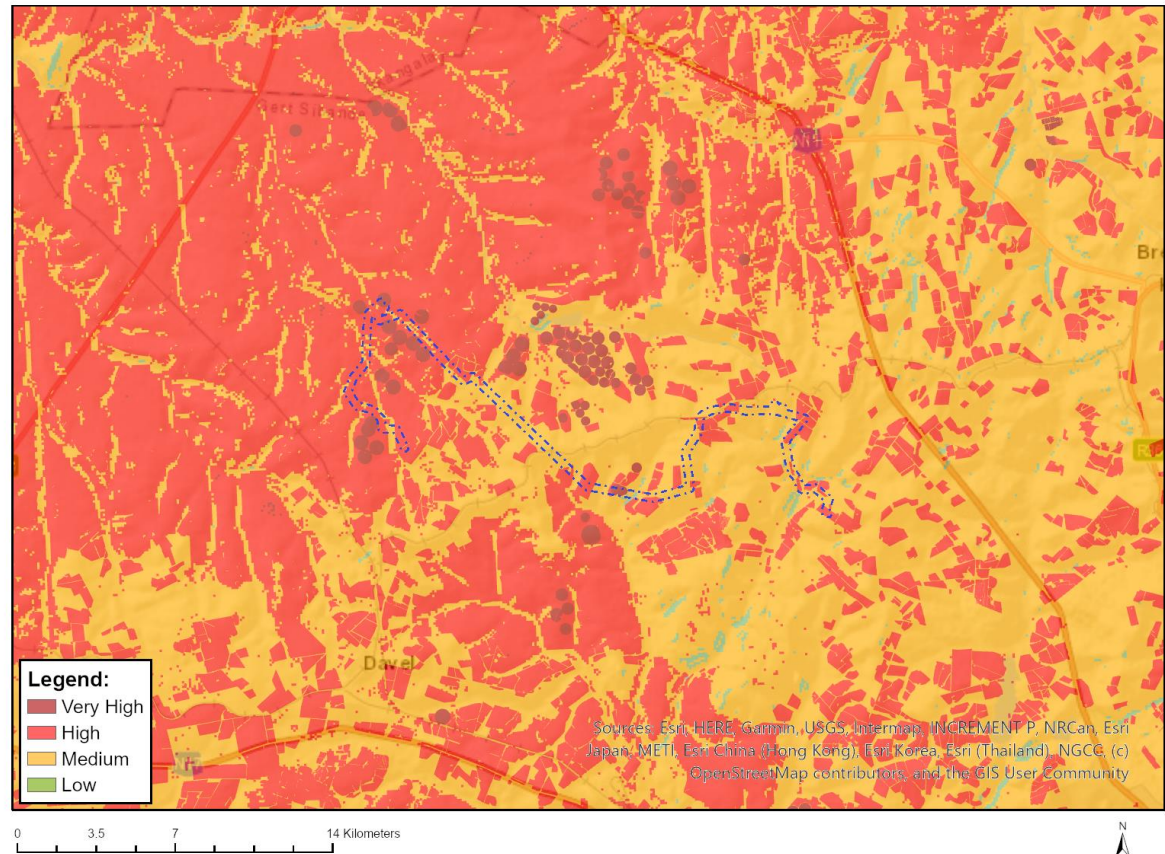
		<a href="https://screening.environment.gov.za/ScreeningDownloads/AssessmentProtocols/Gazetted_Aquatic_Biodiversity_Assessment_Protocols.pdf">ssmentProtocols/Gazetted Aquatic Biodiversity Assessment Protocols.pdf</a>
7	Avian Impact Assessment	<a href="https://screening.environment.gov.za/ScreeningDownloads/AssessmentProtocols/Gazetted_Avifauna_Assessment_Protocols.pdf">https://screening.environment.gov.za/ScreeningDownloads/AssessmentProtocols/Gazetted Avifauna Assessment Protocols.pdf</a>
8	Civil Aviation Assessment	<a href="https://screening.environment.gov.za/ScreeningDownloads/AssessmentProtocols/Gazetted_Civil_Aviation_Installations_Assessment_Protocols.pdf">https://screening.environment.gov.za/ScreeningDownloads/AssessmentProtocols/Gazetted Civil Aviation Installations Assessment Protocols.pdf</a>
9	RFI Assessment	<a href="https://screening.environment.gov.za/ScreeningDownloads/AssessmentProtocols/Gazetted_General_Requirement_Assessment_Protocols.pdf">https://screening.environment.gov.za/ScreeningDownloads/AssessmentProtocols/Gazetted General Requirement Assessment Protocols.pdf</a>
10	Geotechnical Assessment	<a href="https://screening.environment.gov.za/ScreeningDownloads/AssessmentProtocols/Gazetted_General_Requirement_Assessment_Protocols.pdf">https://screening.environment.gov.za/ScreeningDownloads/AssessmentProtocols/Gazetted General Requirement Assessment Protocols.pdf</a>
11	Plant Species Assessment	<a href="https://screening.environment.gov.za/ScreeningDownloads/AssessmentProtocols/Gazetted_Plant_Species_Assessment_Protocols.pdf">https://screening.environment.gov.za/ScreeningDownloads/AssessmentProtocols/Gazetted Plant Species Assessment Protocols.pdf</a>
12	Animal Species Assessment	<a href="https://screening.environment.gov.za/ScreeningDownloads/AssessmentProtocols/Gazetted_Animal_Species_Assessment_Protocols.pdf">https://screening.environment.gov.za/ScreeningDownloads/AssessmentProtocols/Gazetted Animal Species Assessment Protocols.pdf</a>



# Results of the environmental sensitivity of the proposed area.

The following section represents the results of the screening for environmental sensitivity of the proposed site for relevant environmental themes associated with the project classification. It is the duty of the EAP to ensure that the environmental themes provided by the screening tool are comprehensive and complete for the project. Refer to the disclaimer.

## MAP OF RELATIVE AGRICULTURE THEME SENSITIVITY

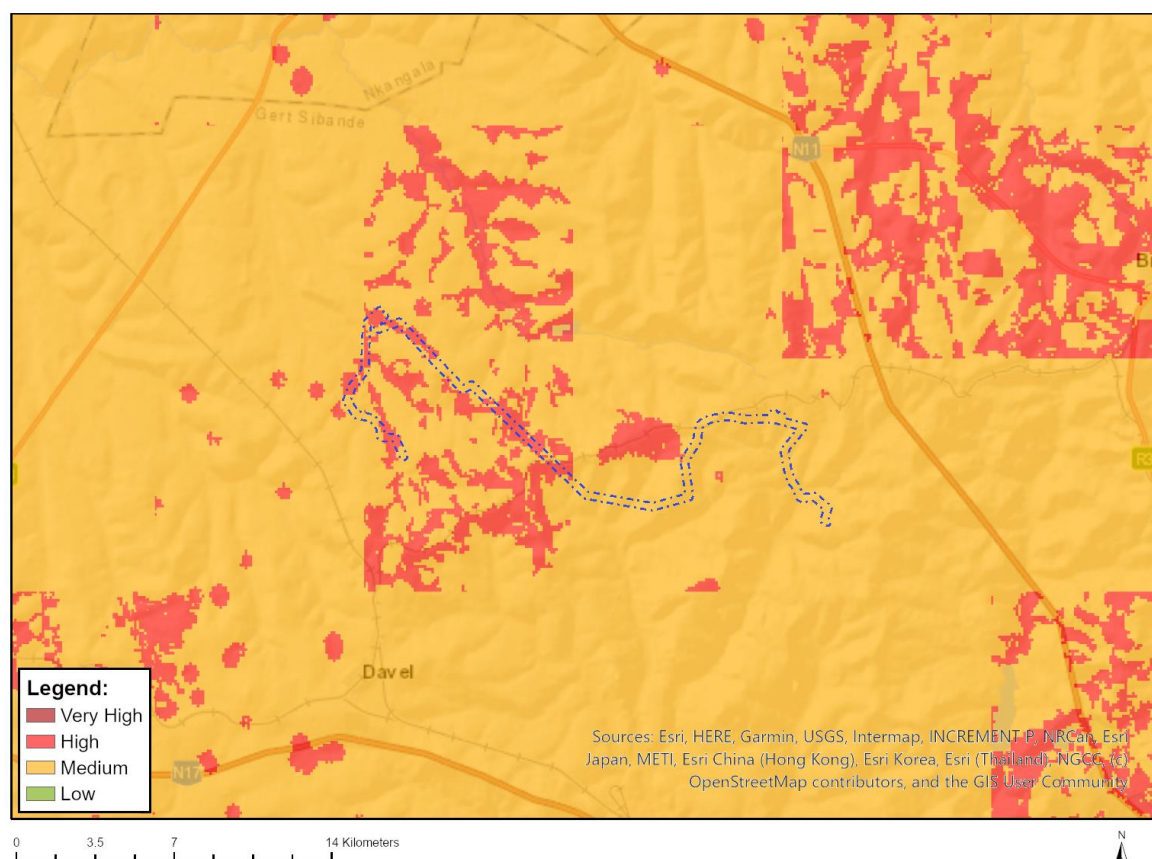


Very High sensitivity	High sensitivity	Medium sensitivity	Low sensitivity
X			

### Sensitivity Features:

Sensitivity	Feature(s)
High	Land capability;09. Moderate-High/10. Moderate-High
High	Annual Crop Cultivation / Planted Pastures Rotation;Land capability;06. Low-Moderate/07. Low-Moderate/08. Moderate
High	Annual Crop Cultivation / Planted Pastures Rotation;Land capability;09. Moderate-High/10. Moderate-High
High	Annual Crop Cultivation / Planted Pastures Rotation;Land capability;01. Very low/02. Very low/03. Low-Very low/04. Low-Very low/05. Low
Low	Land capability;01. Very low/02. Very low/03. Low-Very low/04. Low-Very low/05. Low
Medium	Land capability;06. Low-Moderate/07. Low-Moderate/08. Moderate
Very High	Pivot Irrigation;Land capability;09. Moderate-High/10. Moderate-High

## MAP OF RELATIVE ANIMAL SPECIES THEME SENSITIVITY



Where only a sensitive plant unique number or sensitive animal unique number is provided in the screening report and an assessment is required, the environmental assessment practitioner (EAP) or specialist is required to email SANBI at [eiadatarequests@sanbi.org.za](mailto:eiadatarequests@sanbi.org.za) listing all sensitive species with their unique identifiers for which information is required. The name has been withheld as the species may be prone to illegal harvesting and must be protected. SANBI will release the actual species name after the details of the EAP or specialist have been documented.

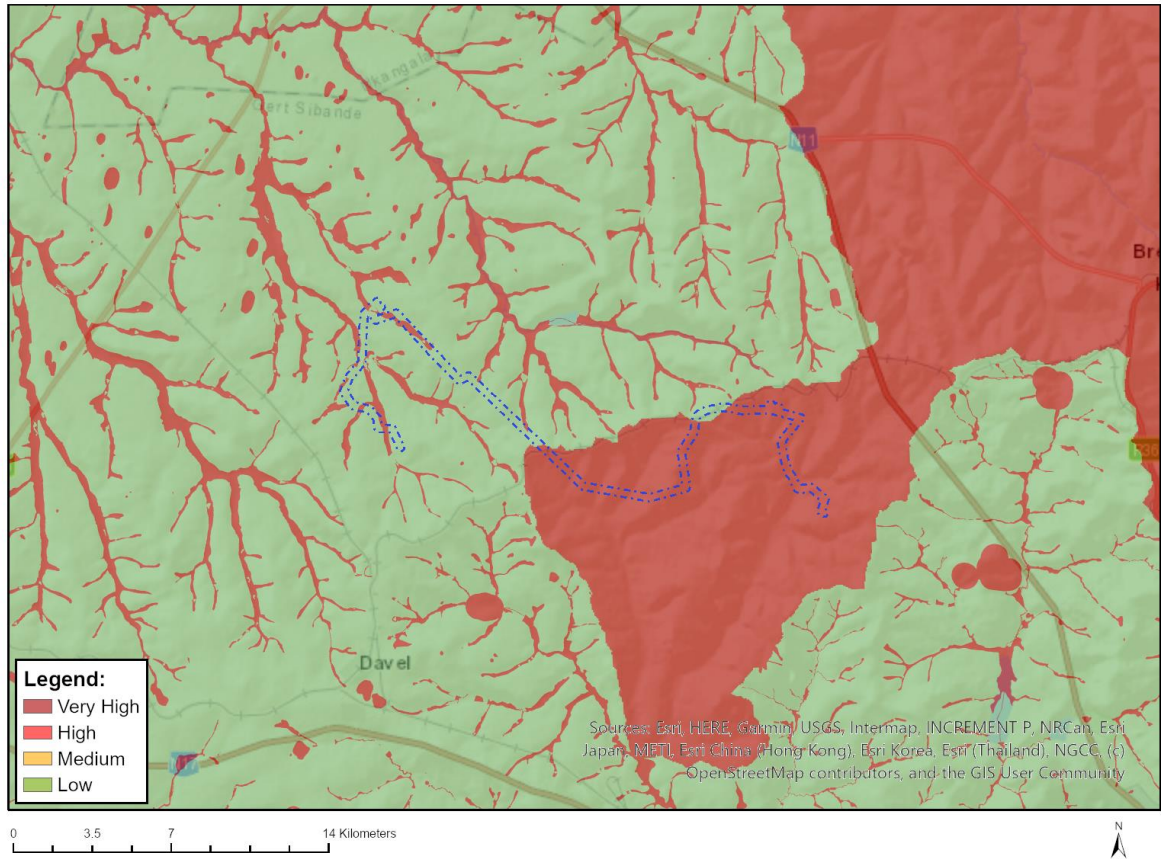
Very High sensitivity	High sensitivity	Medium sensitivity	Low sensitivity
	X		

### Sensitivity Features:

Sensitivity	Feature(s)
High	Aves-Polemaetus bellicosus
High	Aves-Geronticus calvus
High	Aves-Mycteria ibis
Medium	Aves-Tyto capensis
Medium	Aves-Hydroprogne caspia
Medium	Aves-Sagittarius serpentarius
Medium	Aves-Geronticus calvus
Medium	Aves-Eupodotis senegalensis
Medium	Insecta-Lepidochrysops procera
Medium	Mammalia-Crocidura maquassiensis
Medium	Mammalia-Hydrictis maculicollis

Medium	Mammalia-Ourebia ourebi ourebi
--------	--------------------------------

## MAP OF RELATIVE AQUATIC BIODIVERSITY THEME SENSITIVITY



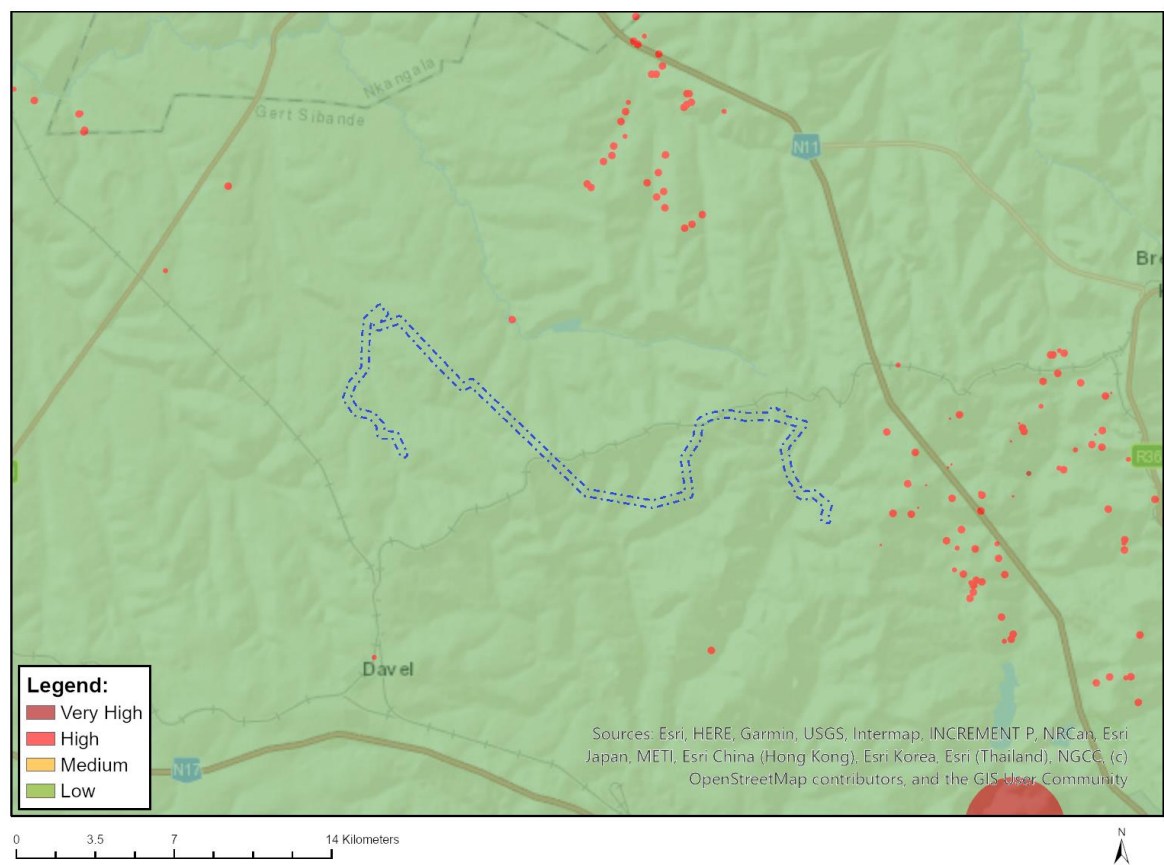
Very High sensitivity	High sensitivity	Medium sensitivity	Low sensitivity
X			

### Sensitivity Features:

Sensitivity	Feature(s)
Low	Low sensitivity
Very High	CBA: Aquatic rivers
Very High	CBA: Wetlands
Very High	ESA: Important subcatchments
Very High	ESA: Wetlands
Very High	FEPA Subcatchment
Very High	Rivers_AB
Very High	Wetlands_Mesic Highveld Grassland Bioregion (Floodplain)
Very High	Wetlands_Mesic Highveld Grassland Bioregion (Seep)
Very High	Wetlands_Mesic Highveld Grassland Bioregion (Valley-bottom)



# MAP OF RELATIVE ARCHAEOLOGICAL AND CULTURAL HERITAGE THEME SENSITIVITY

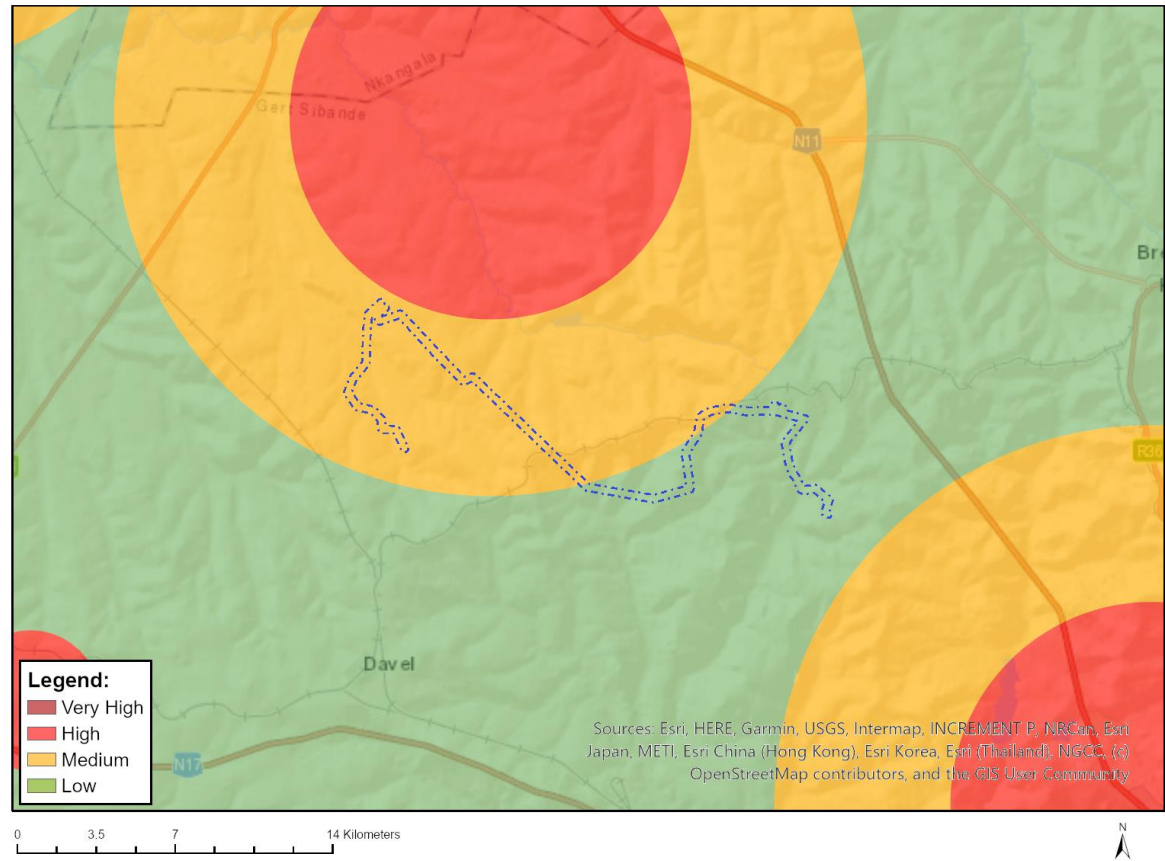


Very High sensitivity	High sensitivity	Medium sensitivity	Low sensitivity
			X

## Sensitivity Features:

Sensitivity	Feature(s)
Low	Low sensitivity

MAP OF RELATIVE CIVIL AVIATION THEME SENSITIVITY

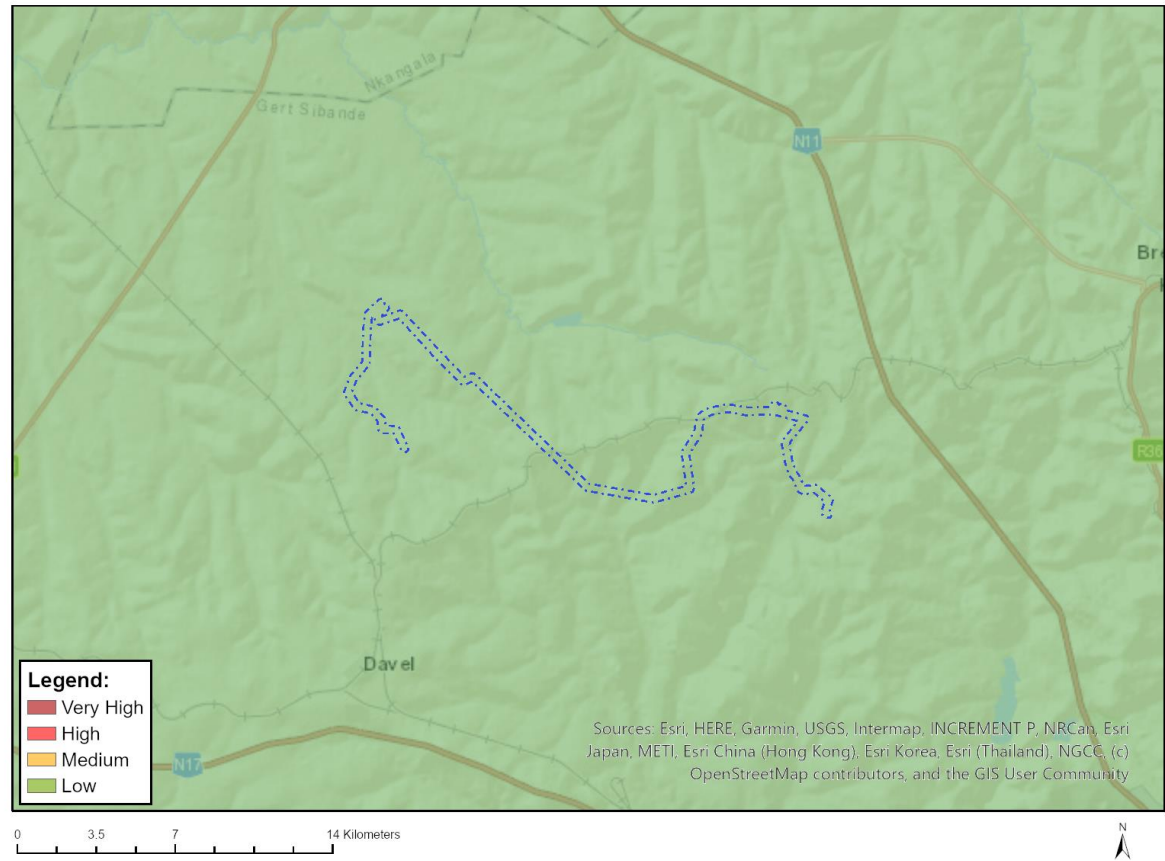


Very High sensitivity	High sensitivity	Medium sensitivity	Low sensitivity
		X	

Sensitivity Features:

Sensitivity	Feature(s)
Low	Low sensitivity
Medium	Between 8 and 15 km of other civil aviation aerodrome

MAP OF RELATIVE DEFENCE THEME SENSITIVITY

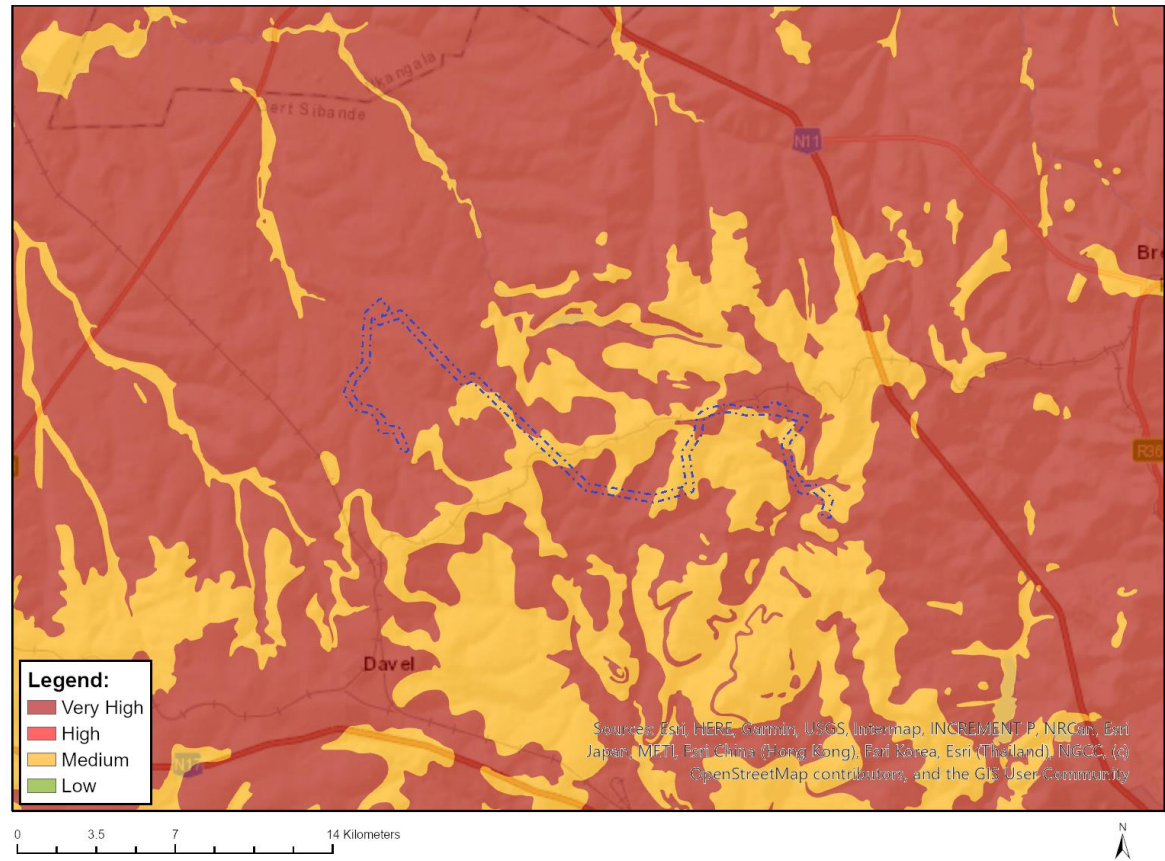


Very High sensitivity	High sensitivity	Medium sensitivity	Low sensitivity
			X

Sensitivity Features:

Sensitivity	Feature(s)
Low	Low Sensitivity

MAP OF RELATIVE PALEONTOLOGY THEME SENSITIVITY



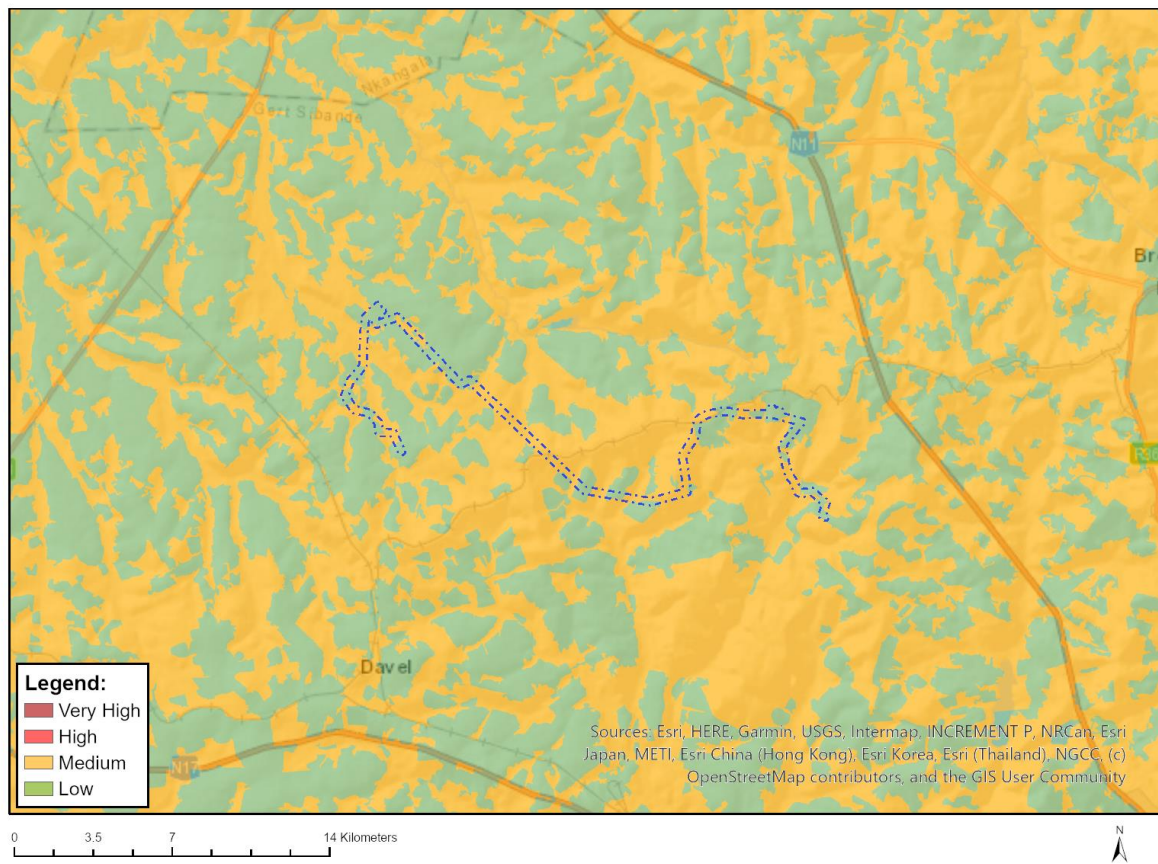
Very High sensitivity	High sensitivity	Medium sensitivity	Low sensitivity
X			

Sensitivity Features:

Sensitivity	Feature(s)
Medium	Features with a Medium paleontological sensitivity
Very High	Features with a Very High paleontological sensitivity



## MAP OF RELATIVE PLANT SPECIES THEME SENSITIVITY



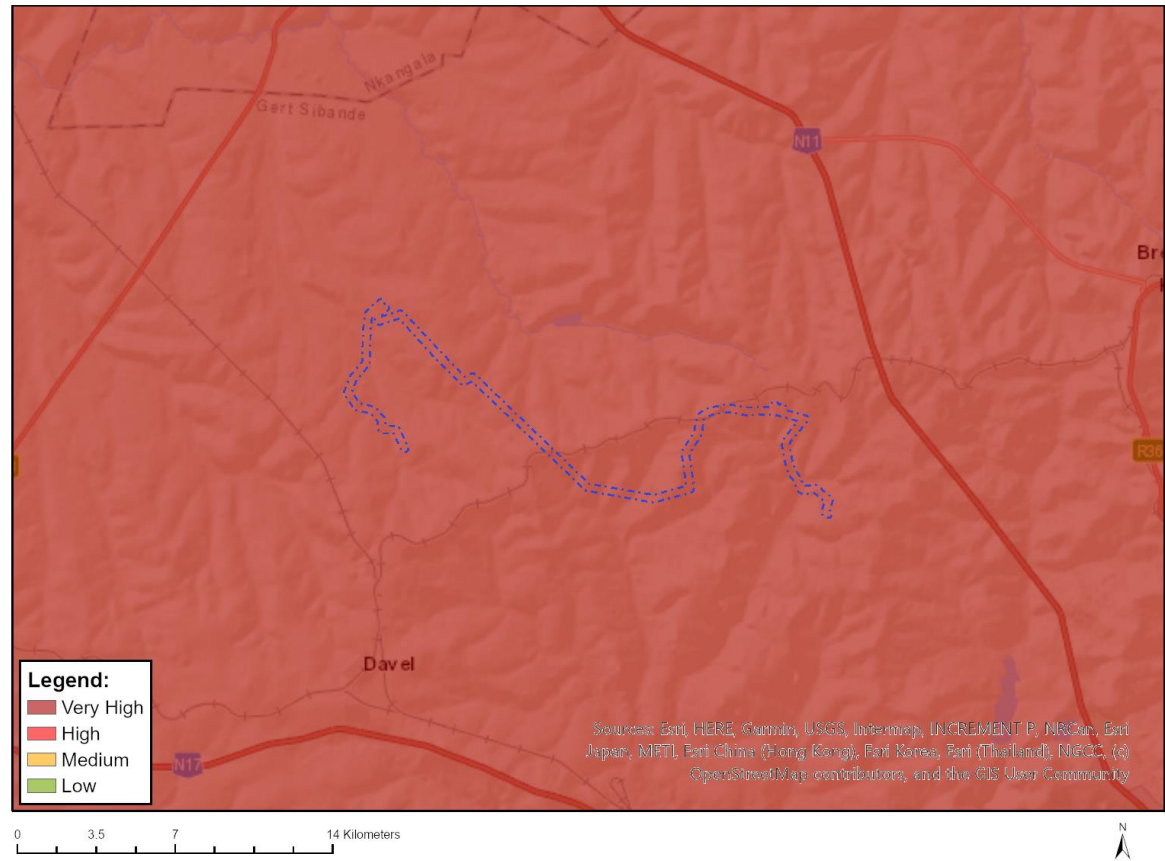
Where only a sensitive plant unique number or sensitive animal unique number is provided in the screening report and an assessment is required, the environmental assessment practitioner (EAP) or specialist is required to email SANBI at [eiadatarequests@sanbi.org.za](mailto:eiadatarequests@sanbi.org.za) listing all sensitive species with their unique identifiers for which information is required. The name has been withheld as the species may be prone to illegal harvesting and must be protected. SANBI will release the actual species name after the details of the EAP or specialist have been documented.

Very High sensitivity	High sensitivity	Medium sensitivity	Low sensitivity
		X	

### Sensitivity Features:

Sensitivity	Feature(s)
Low	Low Sensitivity
Medium	Sensitive species 1252
Medium	Khadia carolinensis
Medium	Aspidoglossum xanthosphaerum
Medium	Miraglossum davyi
Medium	Sensitive species 41
Medium	Sensitive species 691
Medium	Pachycarpus suaveolens

# MAP OF RELATIVE TERRESTRIAL BIODIVERSITY THEME SENSITIVITY



Very High sensitivity	High sensitivity	Medium sensitivity	Low sensitivity
X			

## Sensitivity Features:

Sensitivity	Feature(s)
Very High	CBA 1
Very High	CBA 2
Very High	FEPA Subcatchment
Very High	National Protected Area Expansion Strategy (NPAES)
Very High	EN_Eastern Highveld Grassland
Very High	VU_Soweto Highveld Grassland

**SCREENING REPORT FOR AN ENVIRONMENTAL AUTHORIZATION AS  
REQUIRED BY THE 2014 EIA REGULATIONS – PROPOSED SITE  
ENVIRONMENTAL SENSITIVITY**

**EIA Reference number:** TBC

**Project name:** Phefumula Emoyeni One

**Project title:** Main Transmission Substation

**Date screening report generated:** 18/02/2025 12:21:57

**Applicant:** Phefumula Emoyeni One (Pty) Ltd

**Compiler:** WSP Group Africa (Pty) Ltd

**Compiler signature:**

.....

**Application Category:** Utilities Infrastructure|Electricity|Distribution and  
Transmission|Substation

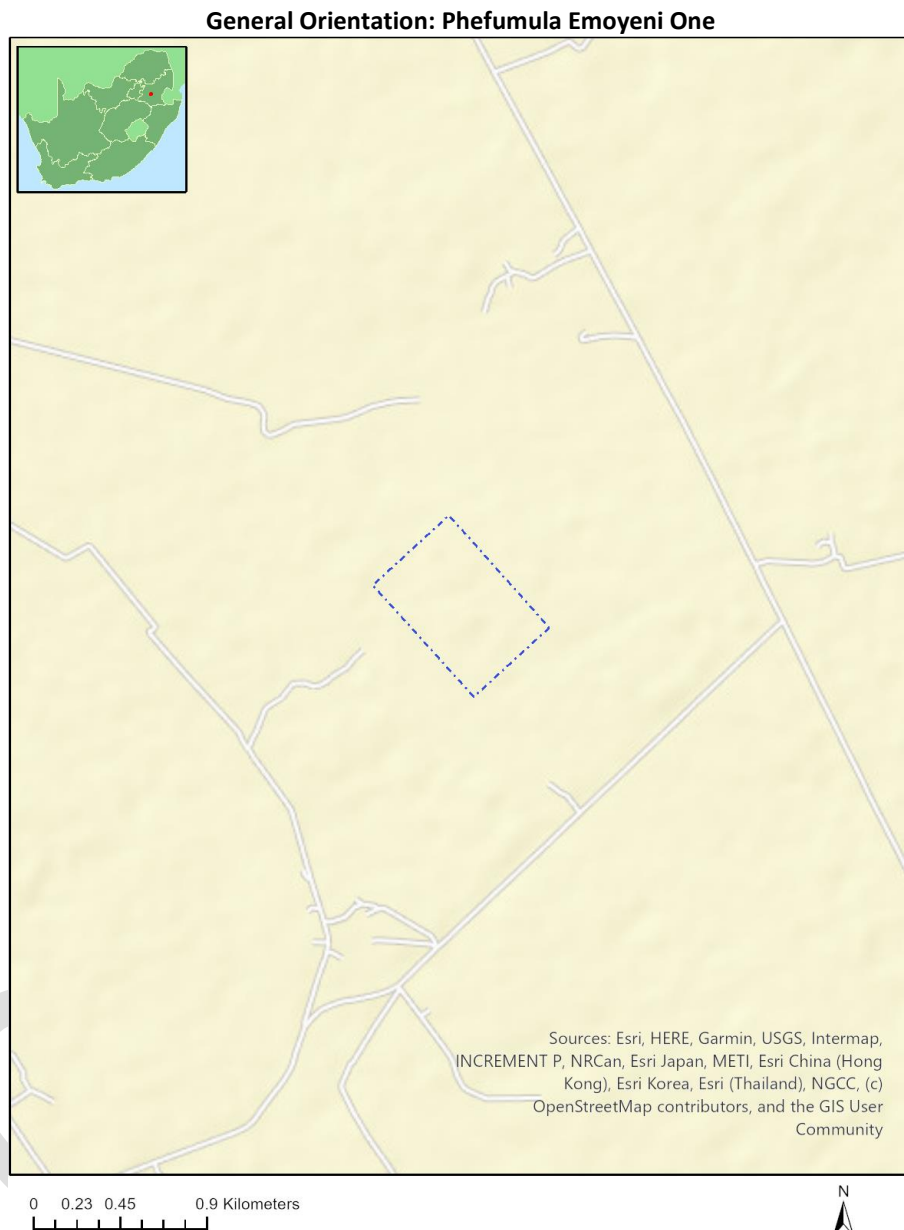
## Table of Contents

Proposed Project Location .....	3
Orientation map 1: General location .....	3
Map of proposed site and relevant area(s) .....	4
Cadastral details of the proposed site .....	4
Wind and Solar developments with an approved Environmental Authorisation or applications under consideration within 30 km of the proposed area .....	4
Environmental Management Frameworks relevant to the application .....	5
Environmental screening results and assessment outcomes .....	5
Relevant development incentives, restrictions, exclusions or prohibitions .....	5
Proposed Development Area Environmental Sensitivity .....	6
Specialist assessments identified .....	6
Results of the environmental sensitivity of the proposed area .....	8
MAP OF RELATIVE AGRICULTURE THEME SENSITIVITY .....	8
MAP OF RELATIVE ANIMAL SPECIES THEME SENSITIVITY .....	9
MAP OF RELATIVE AQUATIC BIODIVERSITY THEME SENSITIVITY .....	10
MAP OF RELATIVE ARCHAEOLOGICAL AND CULTURAL HERITAGE THEME SENSITIVITY .....	11
MAP OF RELATIVE CIVIL AVIATION THEME SENSITIVITY .....	12
MAP OF RELATIVE DEFENCE THEME SENSITIVITY .....	13
MAP OF RELATIVE PALEONTOLOGY THEME SENSITIVITY .....	14
MAP OF RELATIVE PLANT SPECIES THEME SENSITIVITY .....	15
MAP OF RELATIVE TERRESTRIAL BIODIVERSITY THEME SENSITIVITY .....	16

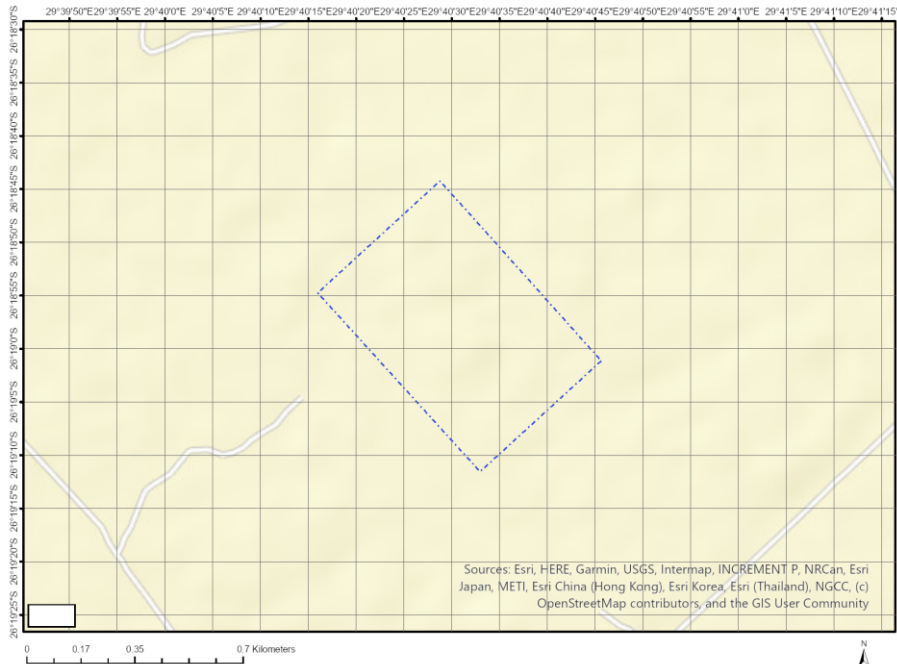


## Proposed Project Location

### Orientation map 1: General location



## Map of proposed site and relevant area(s)



## Cadastral details of the proposed site

Property details:

No	Farm Name	Farm/ Erf No	Portion	Latitude	Longitude	Property Type
1	KUILFONTEIN	234	0	26°20'18.34S	29°39'34.59E	Farm
2	KUILFONTEIN	234	23	26°19'12.14S	29°40'10.34E	Farm Portion

Development footprint<sup>1</sup> vertices:

No development footprint(s) specified.

## Wind and Solar developments with an approved Environmental Authorisation or applications under consideration within 30 km of the proposed area

No	EIA Reference No	Classification	Status of application	Distance from proposed area (km)
1	14/12/16/3/3/2/2161	Wind	Approved	18.7
2	14/12/16/3/3/1/2657	Wind	Approved	20.3
3	14/12/16/3/3/2/2130	Wind	Approved	15.6
4	14/12/16/3/3/2/2131	Wind	Approved	13.3
5	14/12/16/3/3/2/2162	Wind	Approved	18.7
6	14/12/16/3/3/2/2160	Wind	Approved	18.7

<sup>1</sup> “development footprint”, means the area within the site on which the development will take place and includes all ancillary developments for example roads, power lines, boundary walls, paving etc. which require vegetation clearance or which will be disturbed and for which the application has been submitted.

## Environmental screening results and assessment outcomes

The following sections contain a summary of any development incentives, restrictions, exclusions or prohibitions that apply to the proposed development site as well as the most environmental sensitive features on the site based on the site sensitivity screening results for the application classification that was selected. The application classification selected for this report is: **Utilities Infrastructure | Electricity | Distribution and Transmission | Substation.**

The following development incentives, restrictions, exclusions or prohibitions and their implications that apply to this site are indicated below.

Page 5 of 16 Disclaimer applies  
18/02/2025

Air Quality-Highveld Priority Area	<a href="https://screening.environment.gov.za/ScreeningDownloads/DevelopmentZones/HIGHVELD_PRIORITY_AREA_AQMP.pdf">https://screening.environment.gov.za/ScreeningDownloads/DevelopmentZones/HIGHVELD_PRIORITY_AREA_AQMP.pdf</a>
Strategic Gas Pipeline Corridors-Phase 8: Rompco Pipeline Corridor	<a href="https://screening.environment.gov.za/ScreeningDownloads/DevelopmentZones/Combined_GAS.pdf">https://screening.environment.gov.za/ScreeningDownloads/DevelopmentZones/Combined_GAS.pdf</a>

### Proposed Development Area Environmental Sensitivity

The following summary of the development site environmental sensitivities is identified. Only the highest environmental sensitivity is indicated. The footprint environmental sensitivities for the proposed development footprint as identified, are indicative only and must be verified on site by a suitably qualified person before the specialist assessments identified below can be confirmed.

Theme	Very High sensitivity	High sensitivity	Medium sensitivity	Low sensitivity
Agriculture Theme	X			
Animal Species Theme		X		
Aquatic Biodiversity Theme				X
Archaeological and Cultural Heritage Theme				X
Civil Aviation Theme			X	
Defence Theme				X
Paleontology Theme	X			
Plant Species Theme				X
Terrestrial Biodiversity Theme	X			

### Specialist assessments identified

Based on the selected classification, and the known impacts associated with the proposed development, the following list of specialist assessments have been identified for inclusion in the assessment report. It is the responsibility of the EAP to confirm this list and to motivate in the assessment report, the reason for not including any of the identified specialist study including the provision of photographic evidence of the site situation.

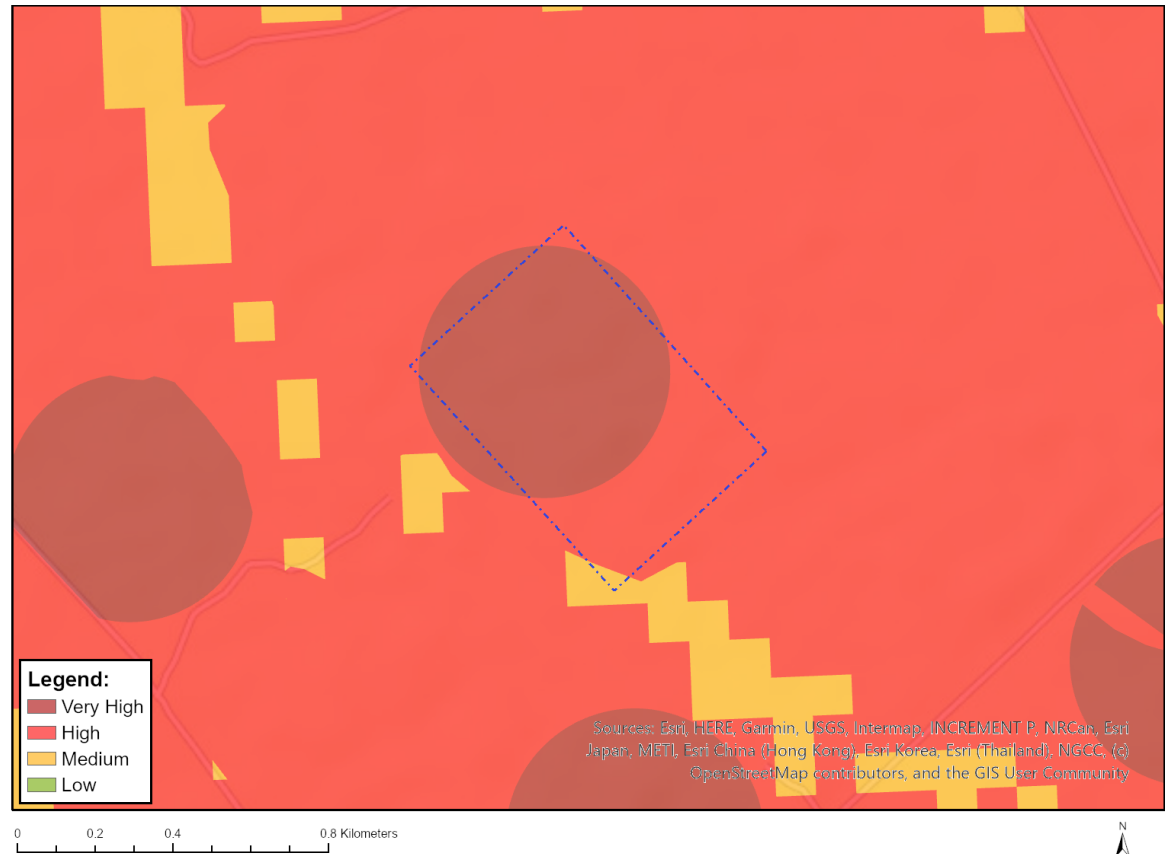
No	Specialist assessment	Assessment Protocol
1	Geotechnical Assessment	<a href="https://screening.environment.gov.za/ScreeningDownloads/AssessmentProtocols/Gazetted_General_Requirement_Assessment_Protocols.pdf">https://screening.environment.gov.za/ScreeningDownloads/AssessmentProtocols/Gazetted_General_Requirement_Assessment_Protocols.pdf</a>
2	Plant Species Assessment	<a href="https://screening.environment.gov.za/ScreeningDownloads/AssessmentProtocols/Gazetted_Plant_Species_Assessment_Protocols.pdf">https://screening.environment.gov.za/ScreeningDownloads/AssessmentProtocols/Gazetted_Plant_Species_Assessment_Protocols.pdf</a>
3	Animal Species Assessment	<a href="https://screening.environment.gov.za/ScreeningDownloads/AssessmentProtocols/Gazetted_Animal_Species_Assessment_Protocols.pdf">https://screening.environment.gov.za/ScreeningDownloads/AssessmentProtocols/Gazetted_Animal_Species_Assessment_Protocols.pdf</a>
4	Agricultural Impact Assessment	<a href="https://screening.environment.gov.za/ScreeningDownloads/AssessmentProtocols/Gazetted_General_Agriculture_Assessment_Protocols.pdf">https://screening.environment.gov.za/ScreeningDownloads/AssessmentProtocols/Gazetted_General_Agriculture_Assessment_Protocols.pdf</a>
5	Archaeological and Cultural Heritage Impact Assessment	<a href="https://screening.environment.gov.za/ScreeningDownloads/AssessmentProtocols/Gazetted_General_Requirement_Assessment_Protocols.pdf">https://screening.environment.gov.za/ScreeningDownloads/AssessmentProtocols/Gazetted_General_Requirement_Assessment_Protocols.pdf</a>

6	Palaeontology Impact Assessment	<a href="https://screening.environment.gov.za/ScreeningDownloads/AssessmentProtocols/Gazetted_General_Requirement_Assessment_Protocols.pdf">https://screening.environment.gov.za/ScreeningDownloads/AssessmentProtocols/Gazetted_General_Requirement_Assessment_Protocols.pdf</a>
7	Terrestrial Biodiversity Impact Assessment	<a href="https://screening.environment.gov.za/ScreeningDownloads/AssessmentProtocols/Gazetted_Terrestrial_Biodiversity_Assessment_Protocols.pdf">https://screening.environment.gov.za/ScreeningDownloads/AssessmentProtocols/Gazetted_Terrestrial_Biodiversity_Assessment_Protocols.pdf</a>
8	Aquatic Biodiversity Impact Assessment	<a href="https://screening.environment.gov.za/ScreeningDownloads/AssessmentProtocols/Gazetted_Aquatic_Biodiversity_Assessment_Protocols.pdf">https://screening.environment.gov.za/ScreeningDownloads/AssessmentProtocols/Gazetted_Aquatic_Biodiversity_Assessment_Protocols.pdf</a>

# Results of the environmental sensitivity of the proposed area.

The following section represents the results of the screening for environmental sensitivity of the proposed site for relevant environmental themes associated with the project classification. It is the duty of the EAP to ensure that the environmental themes provided by the screening tool are comprehensive and complete for the project. Refer to the disclaimer.

## MAP OF RELATIVE AGRICULTURE THEME SENSITIVITY

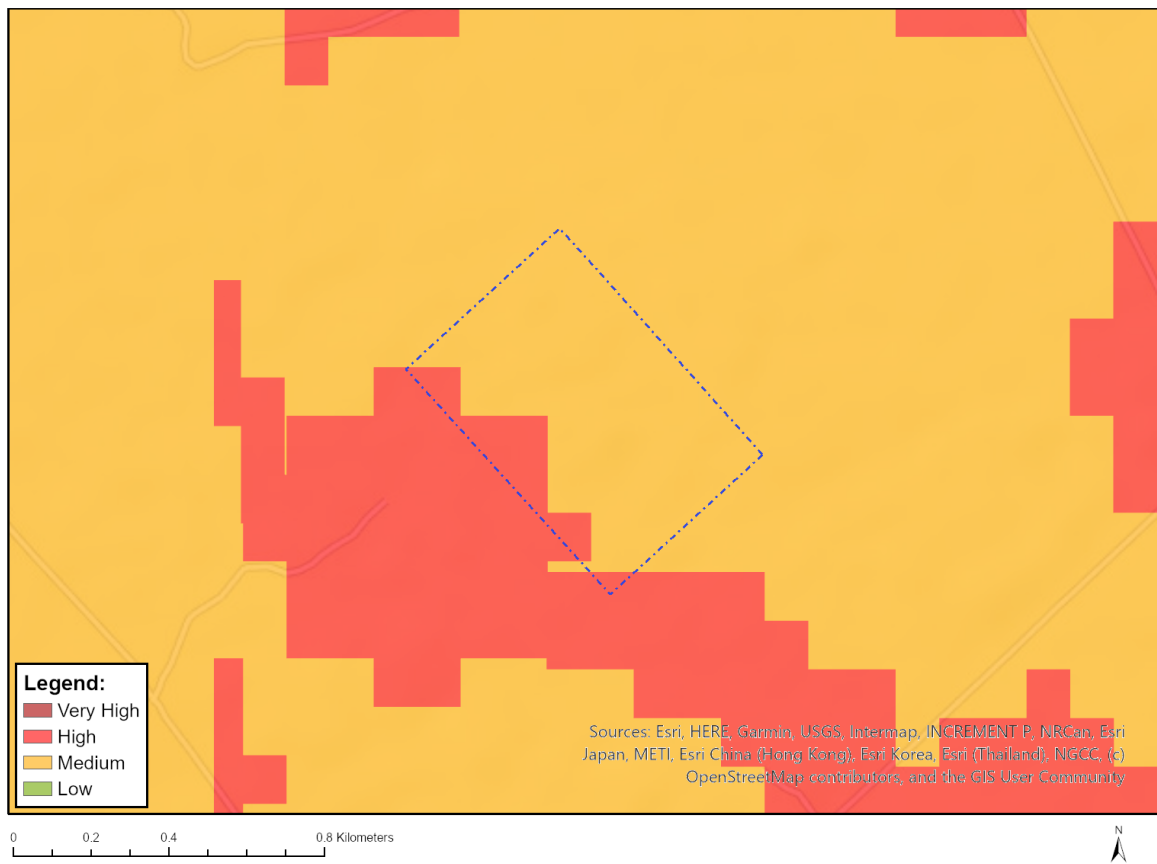


Very High sensitivity	High sensitivity	Medium sensitivity	Low sensitivity
X			

### Sensitivity Features:

Sensitivity	Feature(s)
High	Annual Crop Cultivation / Planted Pastures Rotation;Land capability;06. Low-Moderate/07. Low-Moderate/08. Moderate
High	Annual Crop Cultivation / Planted Pastures Rotation;Land capability;09. Moderate-High/10. Moderate-High
Medium	Land capability;06. Low-Moderate/07. Low-Moderate/08. Moderate
Very High	Pivot Irrigation;Land capability;06. Low-Moderate/07. Low-Moderate/08. Moderate
Very High	Pivot Irrigation;Land capability;09. Moderate-High/10. Moderate-High

## MAP OF RELATIVE ANIMAL SPECIES THEME SENSITIVITY



Where only a sensitive plant unique number or sensitive animal unique number is provided in the screening report and an assessment is required, the environmental assessment practitioner (EAP) or specialist is required to email SANBI at [eiadatarequests@sanbi.org.za](mailto:eiadatarequests@sanbi.org.za) listing all sensitive species with their unique identifiers for which information is required. The name has been withheld as the species may be prone to illegal harvesting and must be protected. SANBI will release the actual species name after the details of the EAP or specialist have been documented.

Very High sensitivity	High sensitivity	Medium sensitivity	Low sensitivity
	X		

### Sensitivity Features:

Sensitivity	Feature(s)
High	Aves-Geronticus calvus
High	Aves-Mycteria ibis
Medium	Mammalia-Crocidura maquassiensis
Medium	Mammalia-Hydrictis maculicollis
Medium	Mammalia-Ourebia ourebi ourebi

MAP OF RELATIVE AQUATIC BIODIVERSITY THEME SENSITIVITY



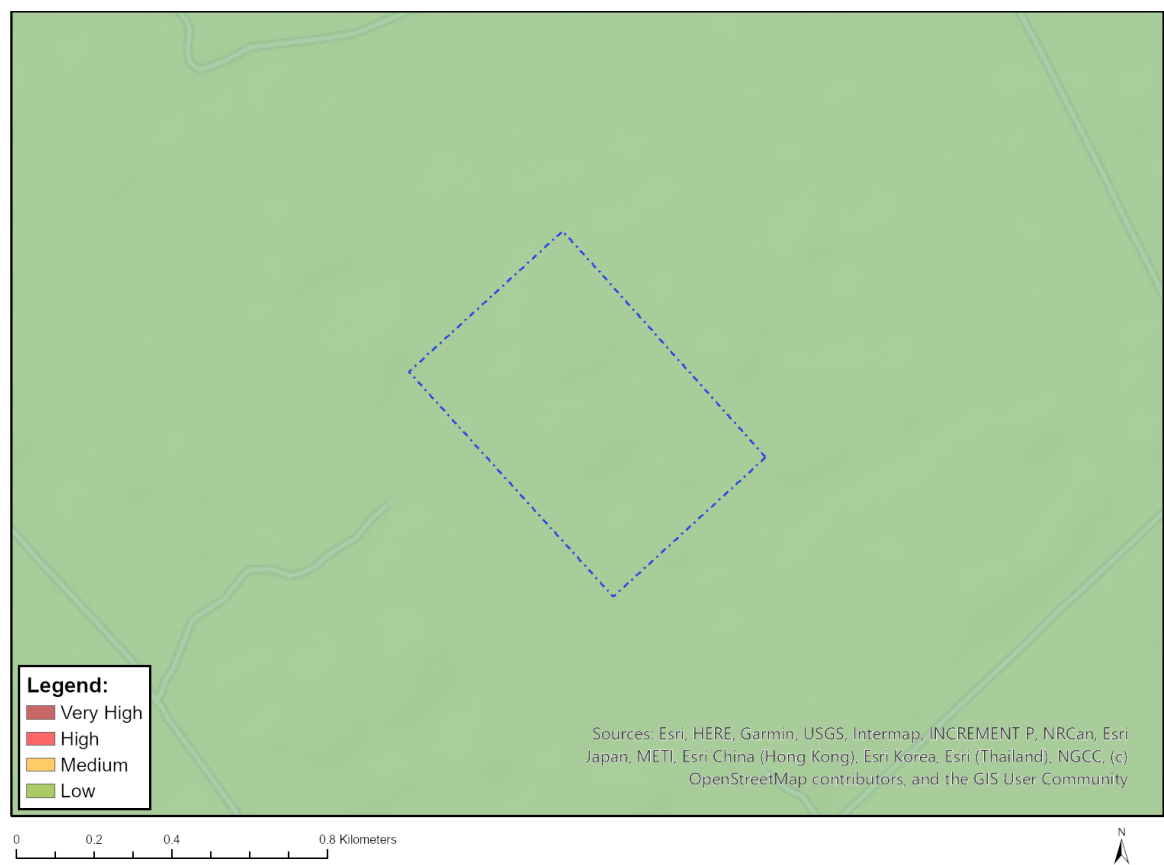
Very High sensitivity	High sensitivity	Medium sensitivity	Low sensitivity
			X

Sensitivity Features:

Sensitivity	Feature(s)
Low	Low sensitivity



# MAP OF RELATIVE ARCHAEOLOGICAL AND CULTURAL HERITAGE THEME SENSITIVITY

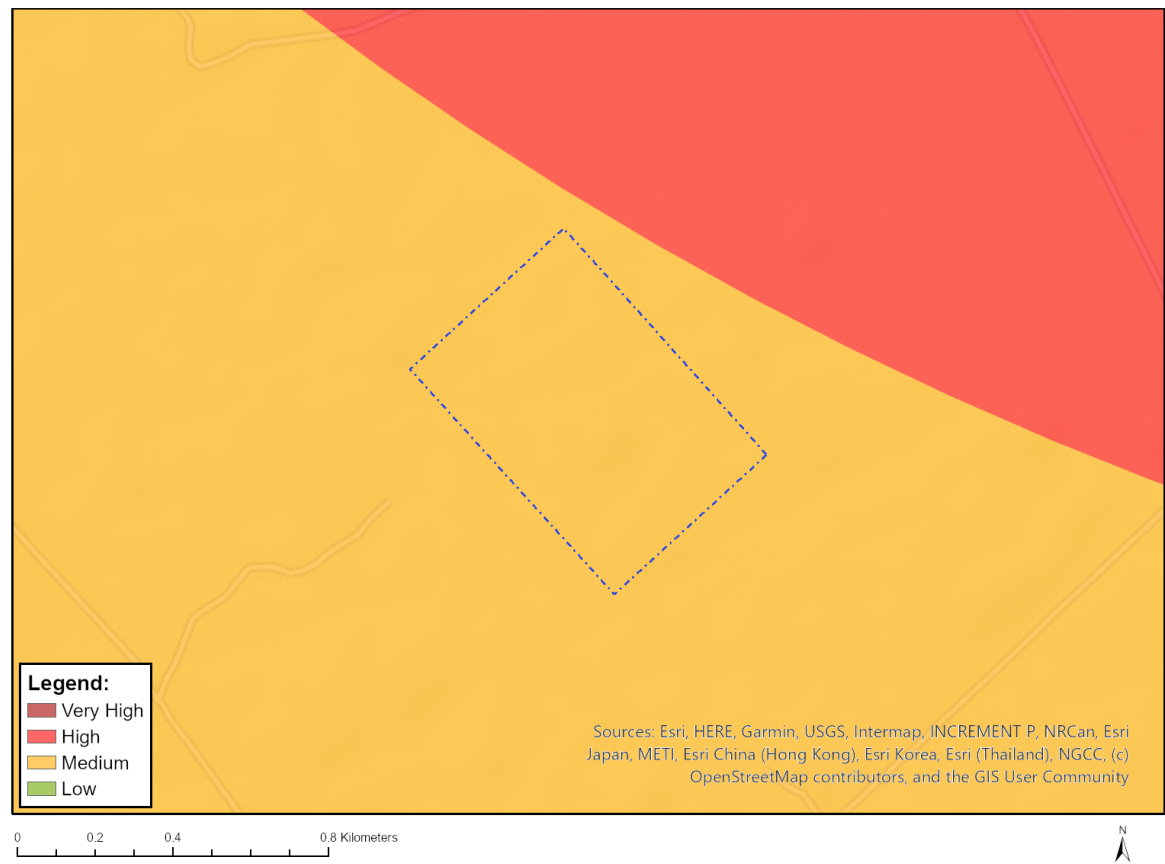


Very High sensitivity	High sensitivity	Medium sensitivity	Low sensitivity
			X

## Sensitivity Features:

Sensitivity	Feature(s)
Low	Low sensitivity

# MAP OF RELATIVE CIVIL AVIATION THEME SENSITIVITY

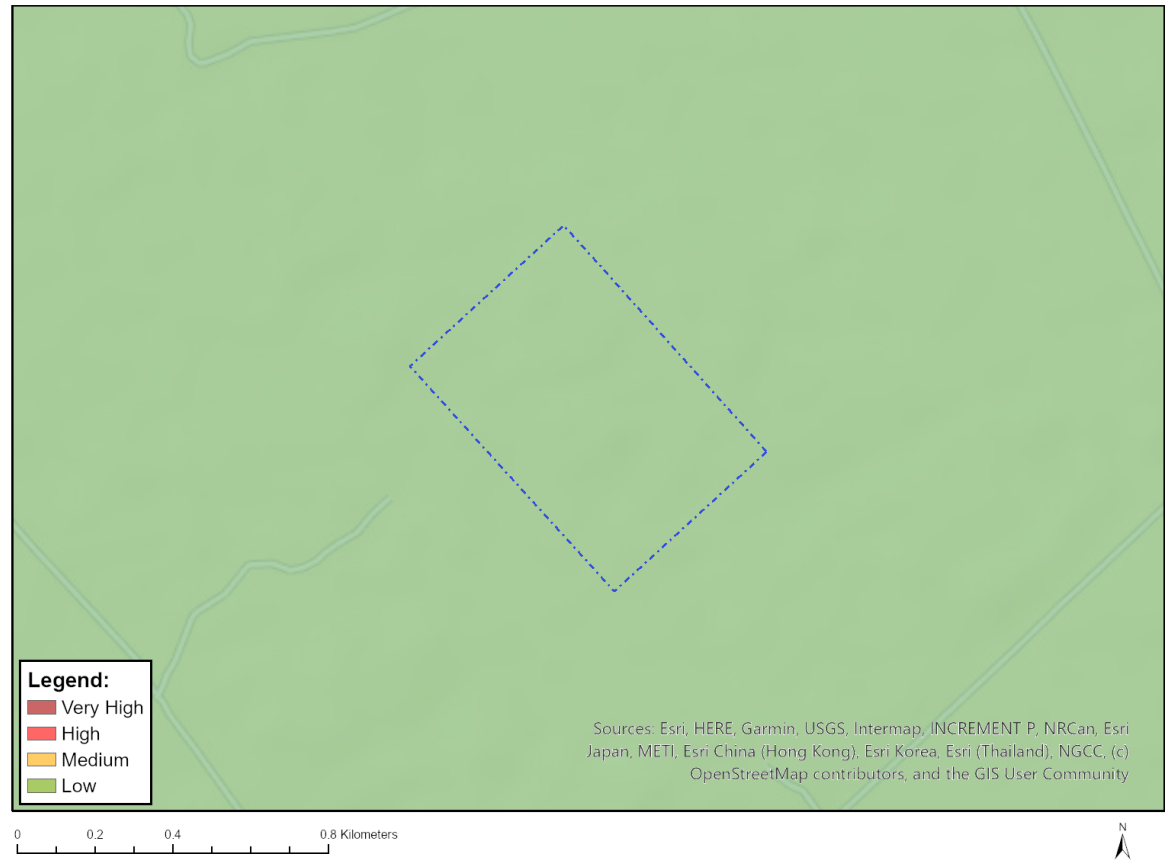


Very High sensitivity	High sensitivity	Medium sensitivity	Low sensitivity
		X	

## Sensitivity Features:

Sensitivity	Feature(s)
Medium	Between 8 and 15 km of other civil aviation aerodrome

MAP OF RELATIVE DEFENCE THEME SENSITIVITY

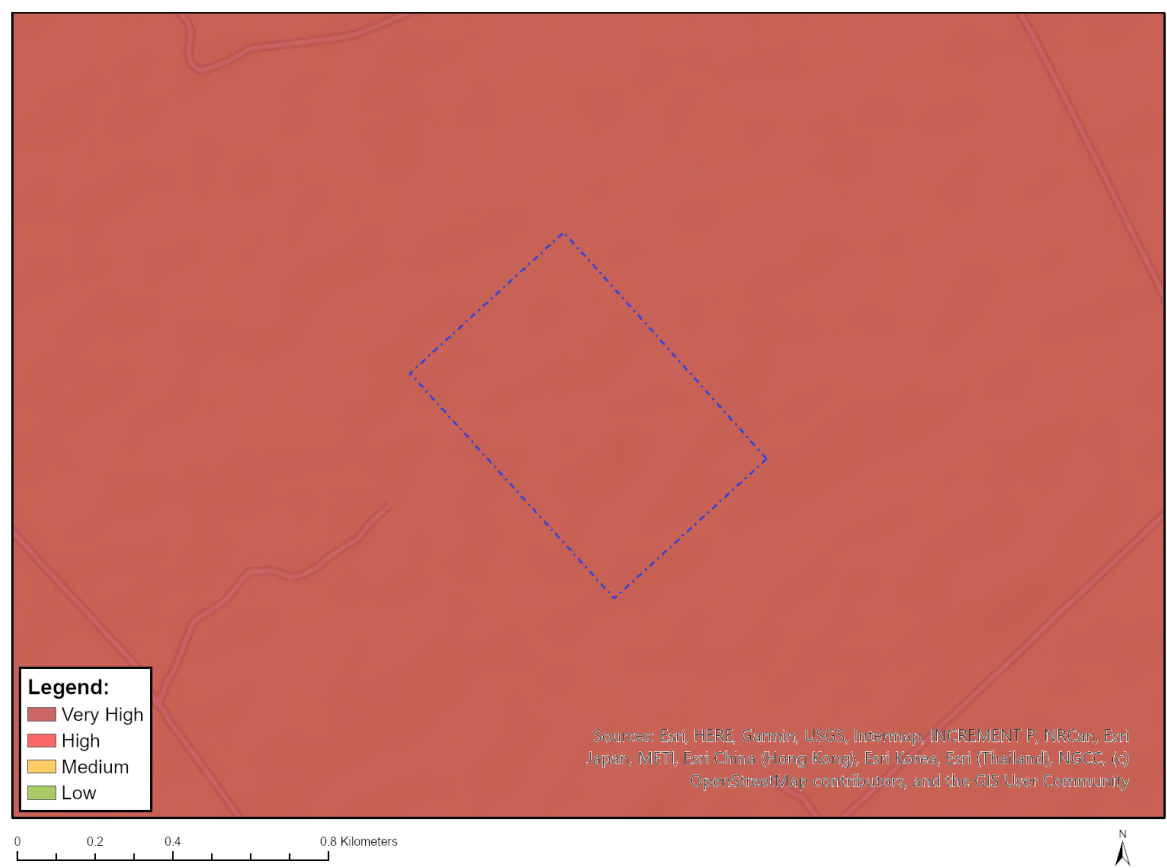


Very High sensitivity	High sensitivity	Medium sensitivity	Low sensitivity
			X

Sensitivity Features:

Sensitivity	Feature(s)
Low	Low Sensitivity

MAP OF RELATIVE PALEONTOLOGY THEME SENSITIVITY

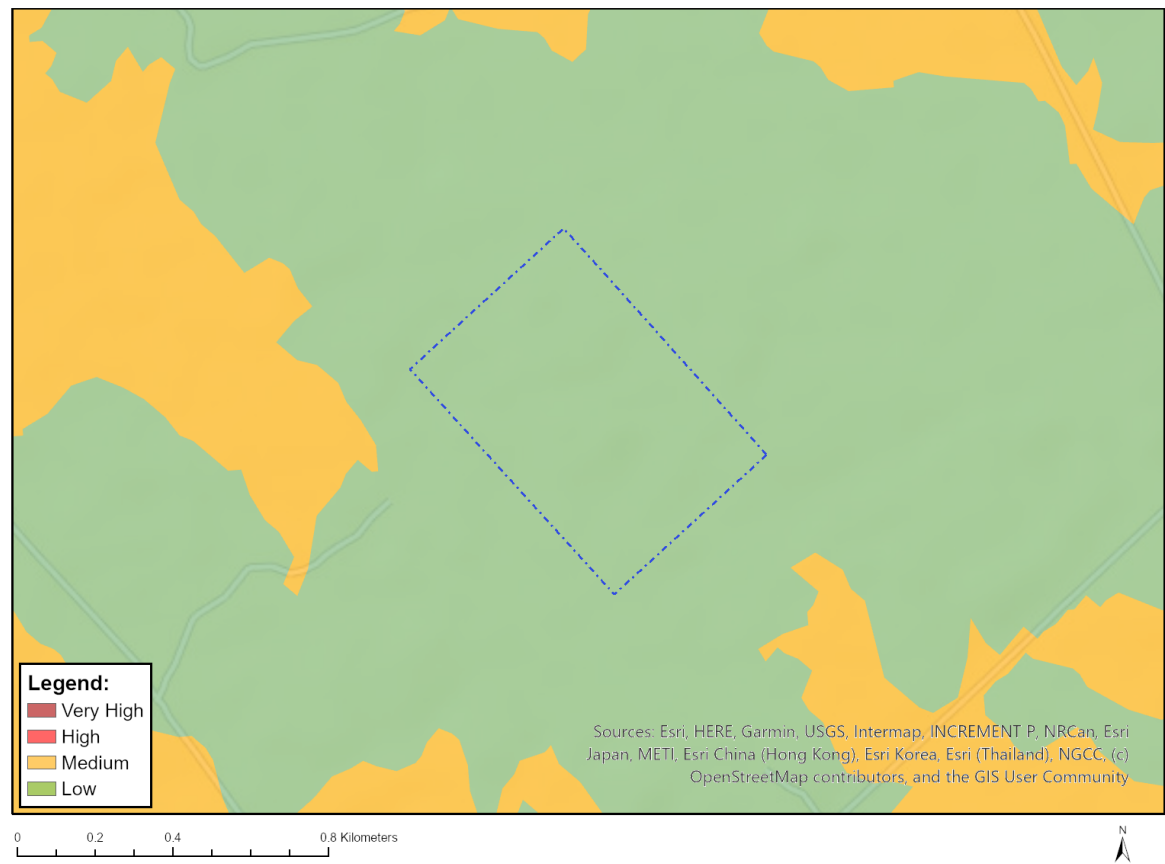


Very High sensitivity	High sensitivity	Medium sensitivity	Low sensitivity
X			

Sensitivity Features:

Sensitivity	Feature(s)
Medium	Features with a Medium paleontological sensitivity
Very High	Features with a Very High paleontological sensitivity

MAP OF RELATIVE PLANT SPECIES THEME SENSITIVITY



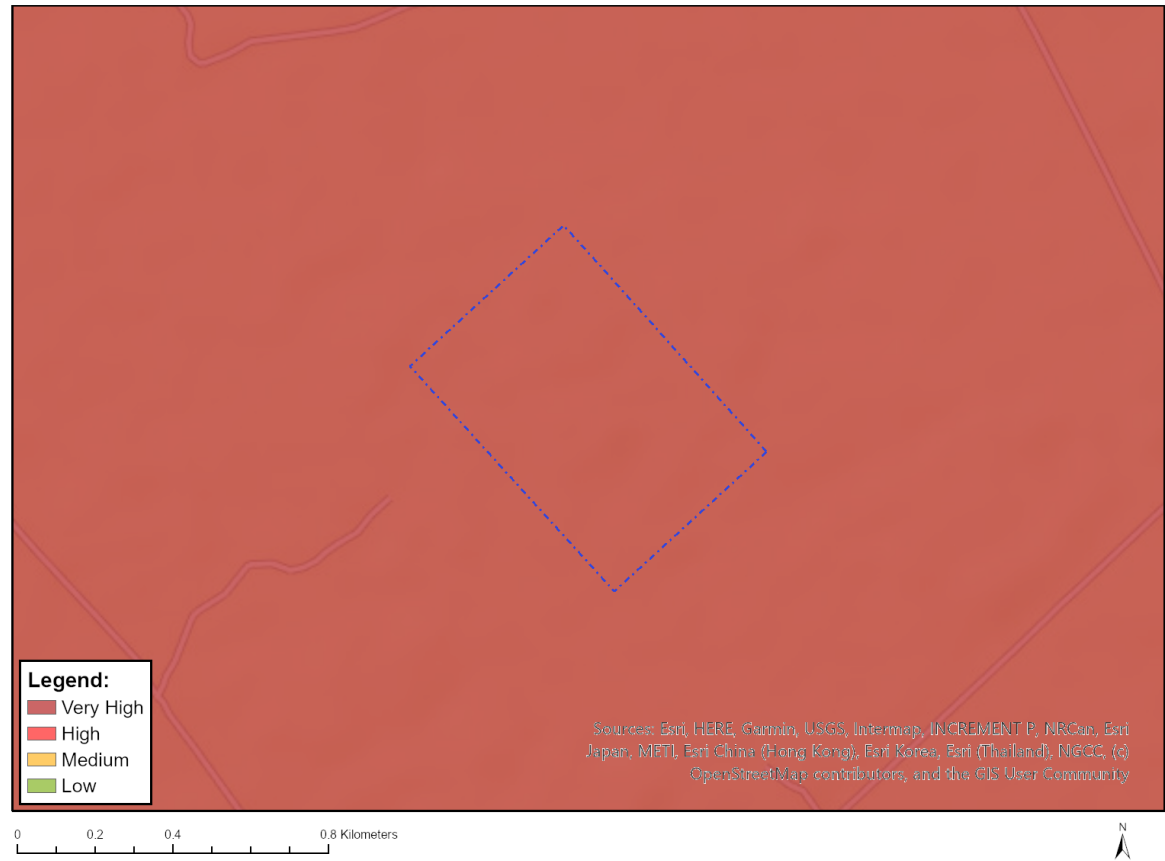
Where only a sensitive plant unique number or sensitive animal unique number is provided in the screening report and an assessment is required, the environmental assessment practitioner (EAP) or specialist is required to email SANBI at [eiadatarequests@sanbi.org.za](mailto:eiadatarequests@sanbi.org.za) listing all sensitive species with their unique identifiers for which information is required. The name has been withheld as the species may be prone to illegal harvesting and must be protected. SANBI will release the actual species name after the details of the EAP or specialist have been documented.

Very High sensitivity	High sensitivity	Medium sensitivity	Low sensitivity
			X

Sensitivity Features:

Sensitivity	Feature(s)
Low	Low Sensitivity

MAP OF RELATIVE TERRESTRIAL BIODIVERSITY THEME SENSITIVITY



Very High sensitivity	High sensitivity	Medium sensitivity	Low sensitivity
X			

Sensitivity Features:

Sensitivity	Feature(s)
Very High	EN_Eastern Highveld Grassland

**SCREENING REPORT FOR AN ENVIRONMENTAL AUTHORIZATION AS  
REQUIRED BY THE 2014 EIA REGULATIONS – PROPOSED SITE  
ENVIRONMENTAL SENSITIVITY**

**EIA Reference number:** TBC

**Project name:** Phefumula Emoyeni One

**Project title:** Substation (DX1)

**Date screening report generated:** 18/02/2025 12:30:28

**Applicant:** Phefumula Emoyeni One (Pty) Ltd

**Compiler:** WSP Group Africa (Pty) Ltd

**Compiler signature:**

.....

**Application Category:** Utilities Infrastructure|Electricity|Distribution and  
Transmission|Substation

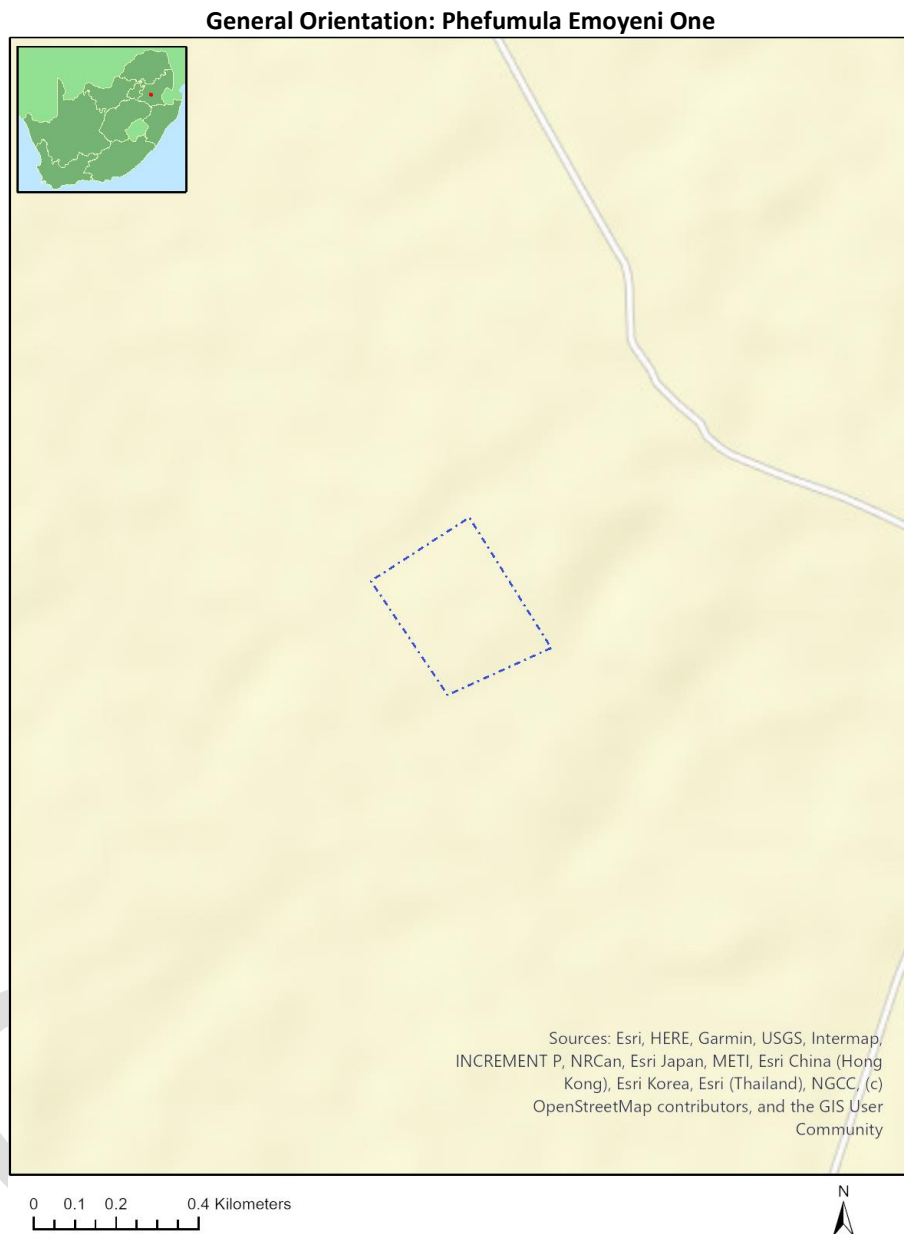
## Table of Contents

Proposed Project Location .....	3
Orientation map 1: General location .....	3
Map of proposed site and relevant area(s) .....	4
Cadastral details of the proposed site .....	4
Wind and Solar developments with an approved Environmental Authorisation or applications under consideration within 30 km of the proposed area .....	4
Environmental Management Frameworks relevant to the application .....	5
Environmental screening results and assessment outcomes .....	5
Relevant development incentives, restrictions, exclusions or prohibitions .....	5
Proposed Development Area Environmental Sensitivity .....	6
Specialist assessments identified .....	6
Results of the environmental sensitivity of the proposed area .....	8
MAP OF RELATIVE AGRICULTURE THEME SENSITIVITY .....	8
MAP OF RELATIVE ANIMAL SPECIES THEME SENSITIVITY .....	9
MAP OF RELATIVE AQUATIC BIODIVERSITY THEME SENSITIVITY .....	10
MAP OF RELATIVE ARCHAEOLOGICAL AND CULTURAL HERITAGE THEME SENSITIVITY .....	11
MAP OF RELATIVE CIVIL AVIATION THEME SENSITIVITY .....	12
MAP OF RELATIVE DEFENCE THEME SENSITIVITY .....	13
MAP OF RELATIVE PALEONTOLOGY THEME SENSITIVITY .....	14
MAP OF RELATIVE PLANT SPECIES THEME SENSITIVITY .....	15
MAP OF RELATIVE TERRESTRIAL BIODIVERSITY THEME SENSITIVITY .....	16

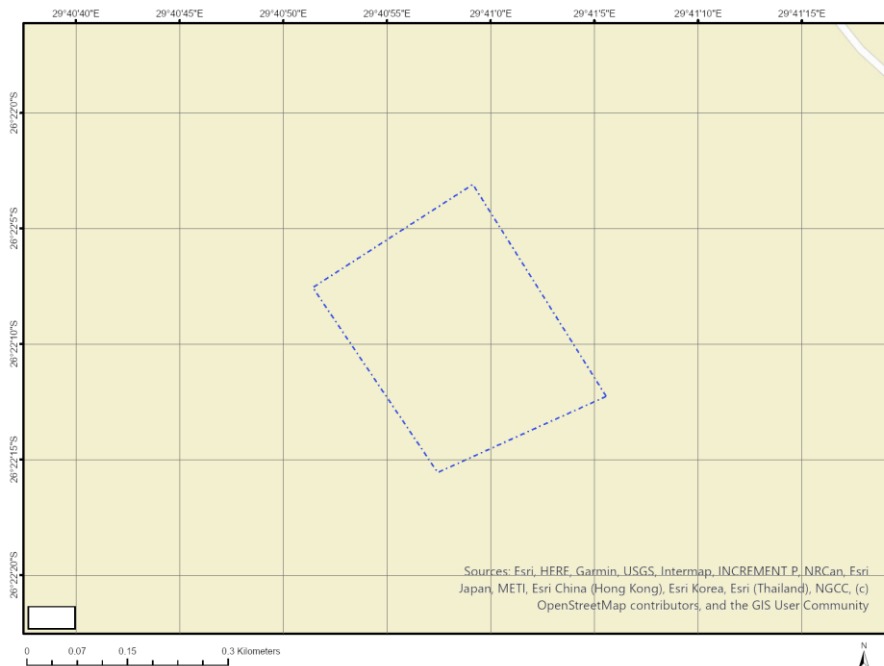


## Proposed Project Location

### Orientation map 1: General location



## Map of proposed site and relevant area(s)



## Cadastral details of the proposed site

Property details:

No	Farm Name	Farm/ Erf No	Portion	Latitude	Longitude	Property Type
1	NOOITGEDACHT	251	0	26°22'31.52S	29°41'18.8E	Farm
2	NOOITGEDACHT	251	6	26°21'43.62S	29°40'47.82E	Farm Portion

Development footprint<sup>1</sup> vertices:  
No development footprint(s) specified.

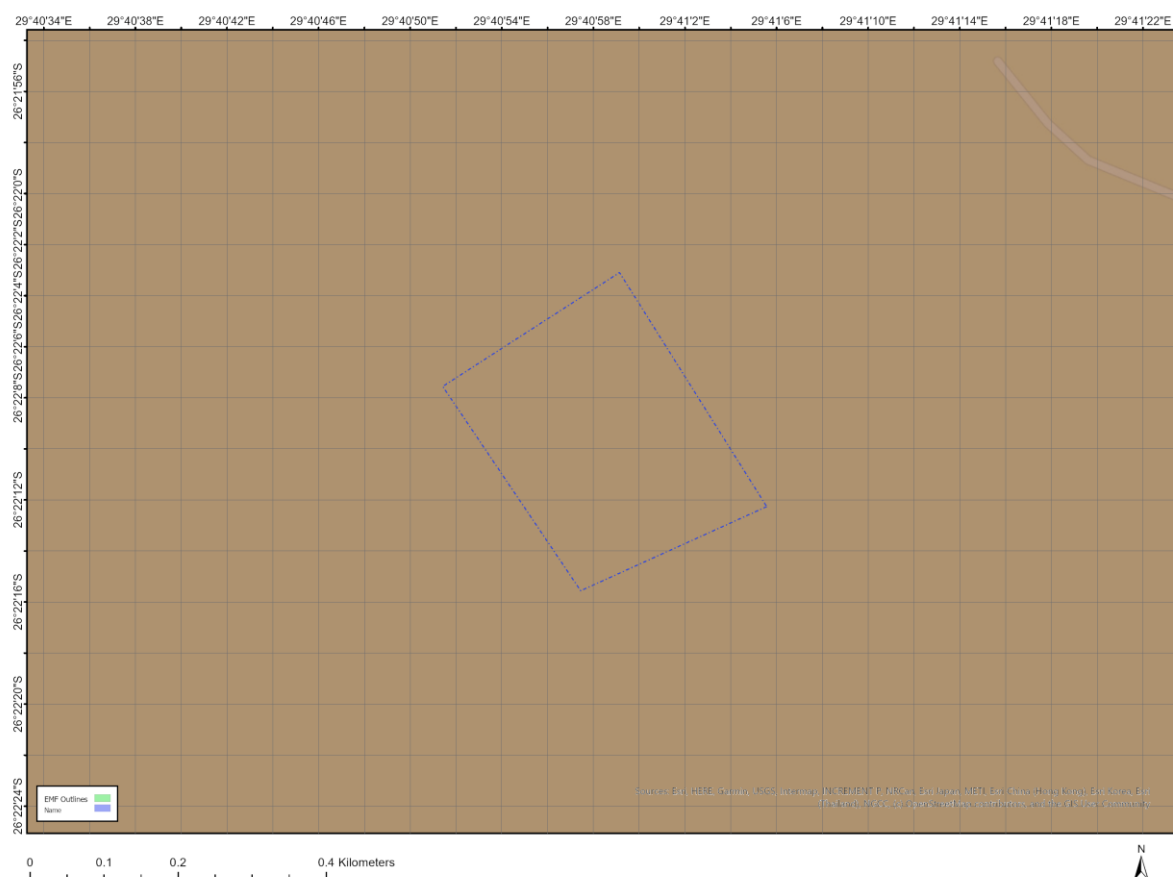
## Wind and Solar developments with an approved Environmental Authorisation or applications under consideration within 30 km of the proposed area

No	EIA Reference No	Classification	Status of application	Distance from proposed area (km)
1	14/12/16/3/3/2/2161	Wind	Approved	13.1
2	14/12/16/3/3/1/2657	Wind	Approved	26.8
3	14/12/16/3/3/2/2130	Wind	Approved	21.7
4	14/12/16/3/3/2/2131	Wind	Approved	19.4

<sup>1</sup> "development footprint", means the area within the site on which the development will take place and includes all ancillary developments for example roads, power lines, boundary walls, paving etc. which require vegetation clearance or which will be disturbed and for which the application has been submitted.

5	14/12/16/3/3/2/2162	Wind	Approved	13.1
6	14/12/16/3/3/2/2160	Wind	Approved	13.1

## Environmental Management Frameworks relevant to the application



Environmental Management Framework	LINK
Olifants EMF	<a href="https://screening.environment.gov.za/ScreeningDownloads/EMF/Zone_4_6_67_78_80_92_103_122_129.pdf">https://screening.environment.gov.za/ScreeningDownloads/EMF/Zone_4_6_67_78_80_92_103_122_129.pdf</a>

## Environmental screening results and assessment outcomes

The following sections contain a summary of any development incentives, restrictions, exclusions or prohibitions that apply to the proposed development site as well as the most environmental sensitive features on the site based on the site sensitivity screening results for the application classification that was selected. The application classification selected for this report is:

**Utilities Infrastructure | Electricity | Distribution and Transmission | Substation.**

### Relevant development incentives, restrictions, exclusions or prohibitions

The following development incentives, restrictions, exclusions or prohibitions and their implications that apply to this site are indicated below.

Incentive, restriction or prohibition	Implication
Air Quality-Highveld Priority Area	<a href="https://screening.environment.gov.za/ScreeningDownloads/DevelopmentZones/HIGHVELD_PRIORITY_AREA_AQMP.pdf">https://screening.environment.gov.za/ScreeningDownloads/DevelopmentZones/HIGHVELD_PRIORITY_AREA_AQMP.pdf</a>
Strategic Gas Pipeline Corridors-Phase 8: Rompco Pipeline Corridor	<a href="https://screening.environment.gov.za/ScreeningDownloads/DevelopmentZones/Combined_GAS.pdf">https://screening.environment.gov.za/ScreeningDownloads/DevelopmentZones/Combined_GAS.pdf</a>

### Proposed Development Area Environmental Sensitivity

The following summary of the development site environmental sensitivities is identified. Only the highest environmental sensitivity is indicated. The footprint environmental sensitivities for the proposed development footprint as identified, are indicative only and must be verified on site by a suitably qualified person before the specialist assessments identified below can be confirmed.

Theme	Very High sensitivity	High sensitivity	Medium sensitivity	Low sensitivity
Agriculture Theme		X		
Animal Species Theme			X	
Aquatic Biodiversity Theme				X
Archaeological and Cultural Heritage Theme				X
Civil Aviation Theme			X	
Defence Theme				X
Paleontology Theme	X			
Plant Species Theme				X
Terrestrial Biodiversity Theme	X			

### Specialist assessments identified

Based on the selected classification, and the known impacts associated with the proposed development, the following list of specialist assessments have been identified for inclusion in the assessment report. It is the responsibility of the EAP to confirm this list and to motivate in the assessment report, the reason for not including any of the identified specialist study including the provision of photographic evidence of the site situation.

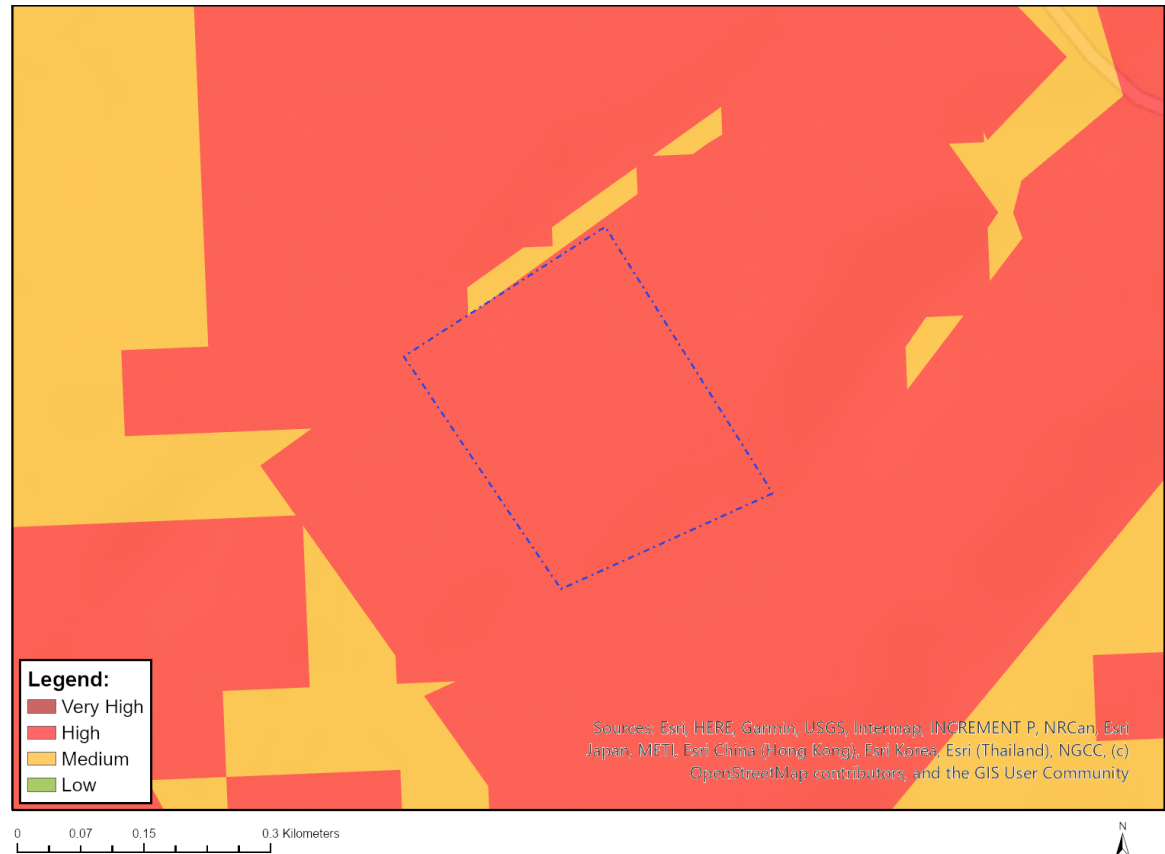
No	Specialist assessment	Assessment Protocol
1	Geotechnical Assessment	<a href="https://screening.environment.gov.za/ScreeningDownloads/AssessmentProtocols/Gazetted_General_Requirement_Assessment_Protocols.pdf">https://screening.environment.gov.za/ScreeningDownloads/AssessmentProtocols/Gazetted_General_Requirement_Assessment_Protocols.pdf</a>
2	Plant Species Assessment	<a href="https://screening.environment.gov.za/ScreeningDownloads/AssessmentProtocols/Gazetted_Plant_Species_Assessment_Protocols.pdf">https://screening.environment.gov.za/ScreeningDownloads/AssessmentProtocols/Gazetted_Plant_Species_Assessment_Protocols.pdf</a>
3	Animal Species Assessment	<a href="https://screening.environment.gov.za/ScreeningDownloads/AssessmentProtocols/Gazetted_Animal_Species_Assessment_Protocols.pdf">https://screening.environment.gov.za/ScreeningDownloads/AssessmentProtocols/Gazetted_Animal_Species_Assessment_Protocols.pdf</a>
4	Agricultural Impact Assessment	<a href="https://screening.environment.gov.za/ScreeningDownloads/AssessmentProtocols/Gazetted_General_Agriculture_Assessment_Protocols.pdf">https://screening.environment.gov.za/ScreeningDownloads/AssessmentProtocols/Gazetted_General_Agriculture_Assessment_Protocols.pdf</a>
5	Archaeological and Cultural Heritage Impact	<a href="https://screening.environment.gov.za/ScreeningDownloads/AssessmentProtocols/Gazetted_Archaeological_and_Cultural_Heritage_Assessment_Protocols.pdf">https://screening.environment.gov.za/ScreeningDownloads/AssessmentProtocols/Gazetted_Archaeological_and_Cultural_Heritage_Assessment_Protocols.pdf</a>

	Assessment	<a href="#">ssmentProtocols/Gazetted_General_Requirement_Assessment_Protocols.pdf</a>
6	Palaeontology Impact Assessment	<a href="https://screening.environment.gov.za/ScreeningDownloads/AssessmentProtocols/Gazetted_General_Requirement_Assessment_Protocols.pdf">https://screening.environment.gov.za/ScreeningDownloads/AssessmentProtocols/Gazetted_General_Requirement_Assessment_Protocols.pdf</a>
7	Terrestrial Biodiversity Impact Assessment	<a href="https://screening.environment.gov.za/ScreeningDownloads/AssessmentProtocols/Gazetted_Terrestrial_Biodiversity_Assessment_Protocols.pdf">https://screening.environment.gov.za/ScreeningDownloads/AssessmentProtocols/Gazetted_Terrestrial_Biodiversity_Assessment_Protocols.pdf</a>
8	Aquatic Biodiversity Impact Assessment	<a href="https://screening.environment.gov.za/ScreeningDownloads/AssessmentProtocols/Gazetted_Aquatic_Biodiversity_Assessment_Protocols.pdf">https://screening.environment.gov.za/ScreeningDownloads/AssessmentProtocols/Gazetted_Aquatic_Biodiversity_Assessment_Protocols.pdf</a>

# Results of the environmental sensitivity of the proposed area.

The following section represents the results of the screening for environmental sensitivity of the proposed site for relevant environmental themes associated with the project classification. It is the duty of the EAP to ensure that the environmental themes provided by the screening tool are comprehensive and complete for the project. Refer to the disclaimer.

## MAP OF RELATIVE AGRICULTURE THEME SENSITIVITY



Very High sensitivity	High sensitivity	Medium sensitivity	Low sensitivity
	X		

### Sensitivity Features:

Sensitivity	Feature(s)
High	Land capability;09. Moderate-High/10. Moderate-High
High	Annual Crop Cultivation / Planted Pastures Rotation;Land capability;06. Low-Moderate/07. Low-Moderate/08. Moderate
High	Annual Crop Cultivation / Planted Pastures Rotation;Land capability;09. Moderate-High/10. Moderate-High
Medium	Land capability;06. Low-Moderate/07. Low-Moderate/08. Moderate

## MAP OF RELATIVE ANIMAL SPECIES THEME SENSITIVITY



Where only a sensitive plant unique number or sensitive animal unique number is provided in the screening report and an assessment is required, the environmental assessment practitioner (EAP) or specialist is required to email SANBI at [eiadatarequests@sanbi.org.za](mailto:eiadatarequests@sanbi.org.za) listing all sensitive species with their unique identifiers for which information is required. The name has been withheld as the species may be prone to illegal harvesting and must be protected. SANBI will release the actual species name after the details of the EAP or specialist have been documented.

Very High sensitivity	High sensitivity	Medium sensitivity	Low sensitivity
		X	

### Sensitivity Features:

Sensitivity	Feature(s)
Medium	Mammalia-Crocidura maquassiensis
Medium	Mammalia-Hydricis maculicollis
Medium	Mammalia-Ourebia ourebi ourebi



MAP OF RELATIVE AQUATIC BIODIVERSITY THEME SENSITIVITY



Very High sensitivity	High sensitivity	Medium sensitivity	Low sensitivity
			X

Sensitivity Features:

Sensitivity	Feature(s)
Low	Low sensitivity

# MAP OF RELATIVE ARCHAEOLOGICAL AND CULTURAL HERITAGE THEME SENSITIVITY

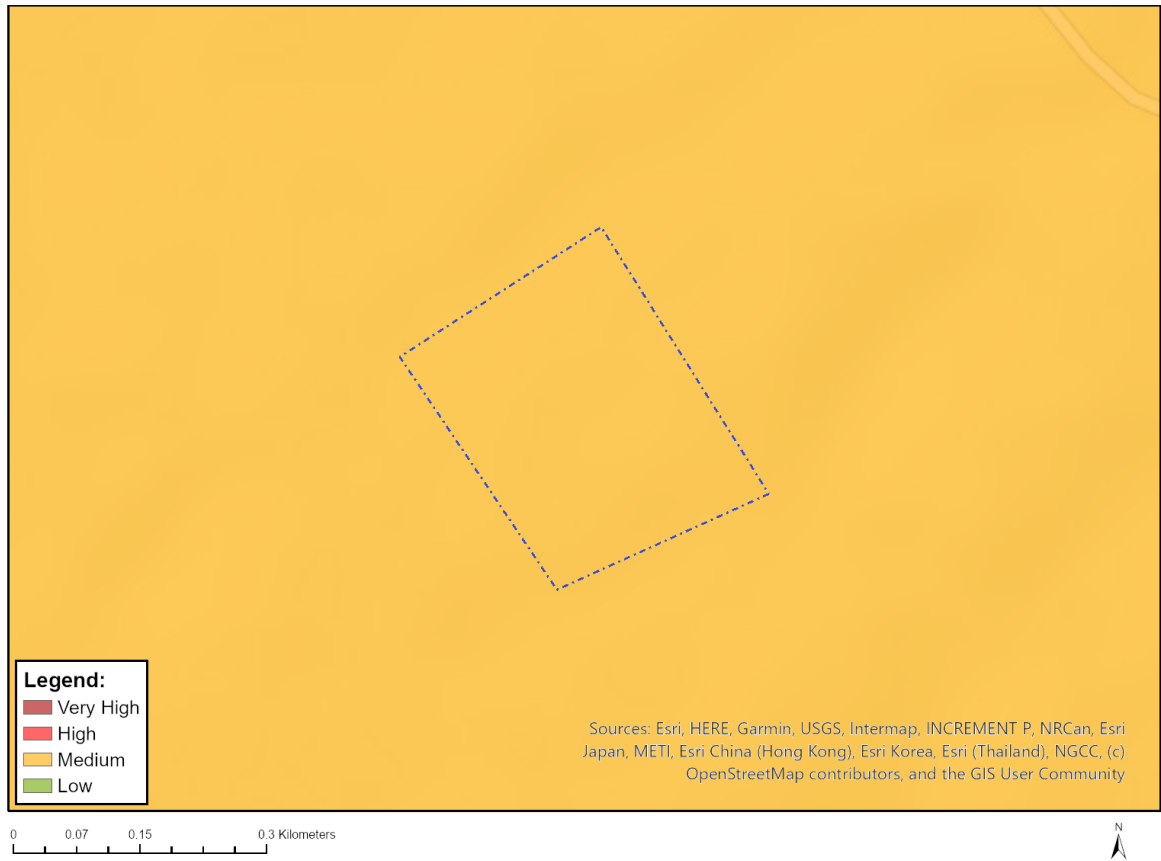


Very High sensitivity	High sensitivity	Medium sensitivity	Low sensitivity
			X

## Sensitivity Features:

Sensitivity	Feature(s)
Low	Low sensitivity

MAP OF RELATIVE CIVIL AVIATION THEME SENSITIVITY



Very High sensitivity	High sensitivity	Medium sensitivity	Low sensitivity
		X	

Sensitivity Features:

Sensitivity	Feature(s)
Medium	Between 8 and 15 km of other civil aviation aerodrome

MAP OF RELATIVE DEFENCE THEME SENSITIVITY

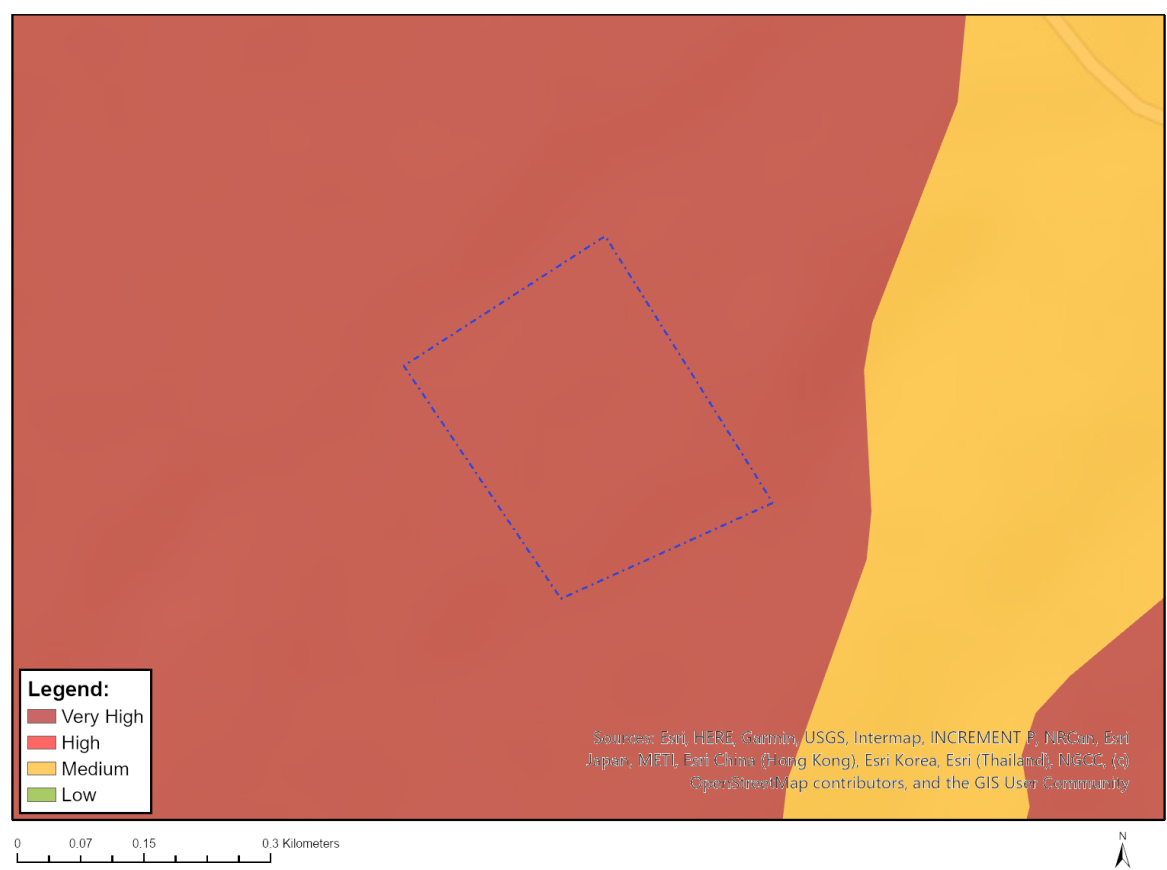


Very High sensitivity	High sensitivity	Medium sensitivity	Low sensitivity
			X

Sensitivity Features:

Sensitivity	Feature(s)
Low	Low Sensitivity

MAP OF RELATIVE PALEONTOLOGY THEME SENSITIVITY



Very High sensitivity	High sensitivity	Medium sensitivity	Low sensitivity
X			

Sensitivity Features:

Sensitivity	Feature(s)
Medium	Features with a Medium paleontological sensitivity
Very High	Features with a Very High paleontological sensitivity

MAP OF RELATIVE PLANT SPECIES THEME SENSITIVITY



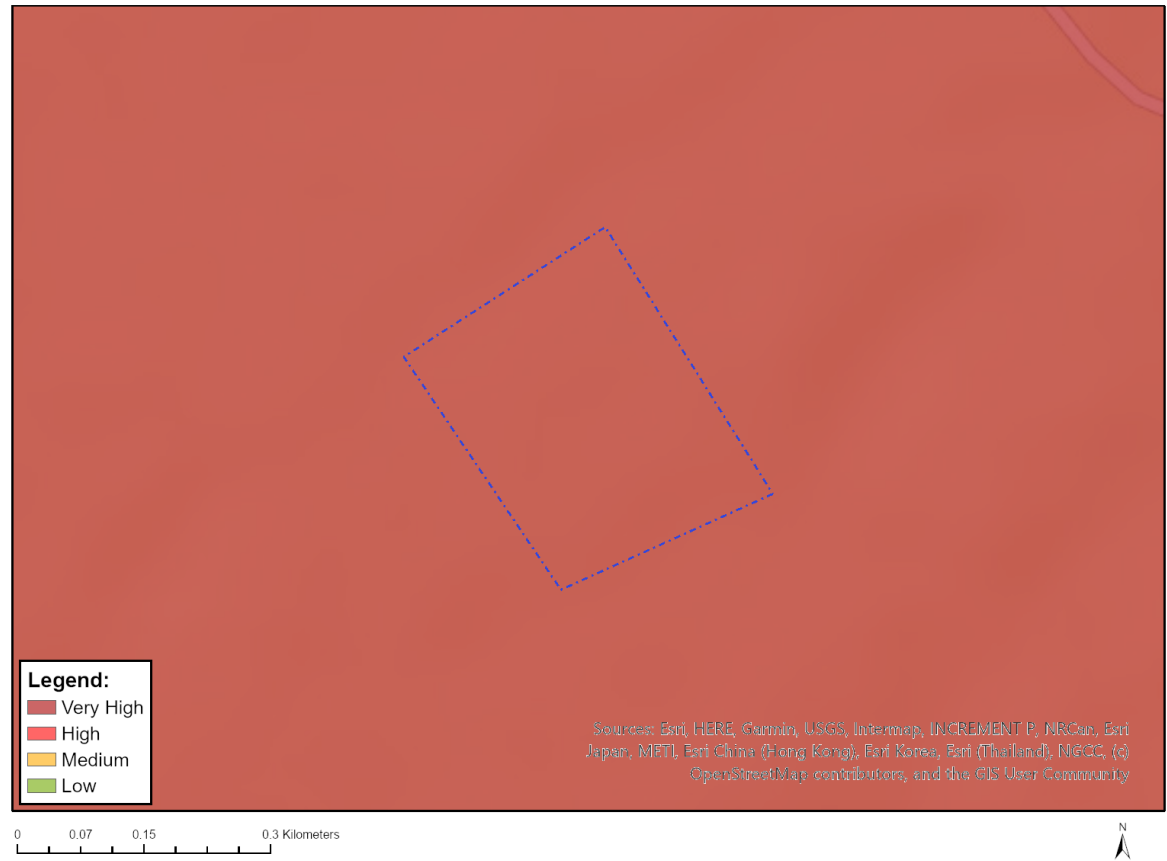
Where only a sensitive plant unique number or sensitive animal unique number is provided in the screening report and an assessment is required, the environmental assessment practitioner (EAP) or specialist is required to email SANBI at [eiadatarequests@sanbi.org.za](mailto:eiadatarequests@sanbi.org.za) listing all sensitive species with their unique identifiers for which information is required. The name has been withheld as the species may be prone to illegal harvesting and must be protected. SANBI will release the actual species name after the details of the EAP or specialist have been documented.

Very High sensitivity	High sensitivity	Medium sensitivity	Low sensitivity
			X

Sensitivity Features:

Sensitivity	Feature(s)
Low	Low Sensitivity

MAP OF RELATIVE TERRESTRIAL BIODIVERSITY THEME SENSITIVITY



Very High sensitivity	High sensitivity	Medium sensitivity	Low sensitivity
X			

Sensitivity Features:

Sensitivity	Feature(s)
Very High	EN_Eastern Highveld Grassland
Very High	VU_Soweto Highveld Grassland



**SCREENING REPORT FOR AN ENVIRONMENTAL AUTHORIZATION AS  
REQUIRED BY THE 2014 EIA REGULATIONS – PROPOSED SITE  
ENVIRONMENTAL SENSITIVITY**

**EIA Reference number:** TBC

**Project name:** Phefumula Emoyeni One

**Project title:** Substation (DX2)

**Date screening report generated:** 18/02/2025 12:38:09

**Applicant:** Phefumula Emoyeni One (Pty) Ltd

**Compiler:** WSP Group Africa (Pty) Ltd

**Compiler signature:**

.....

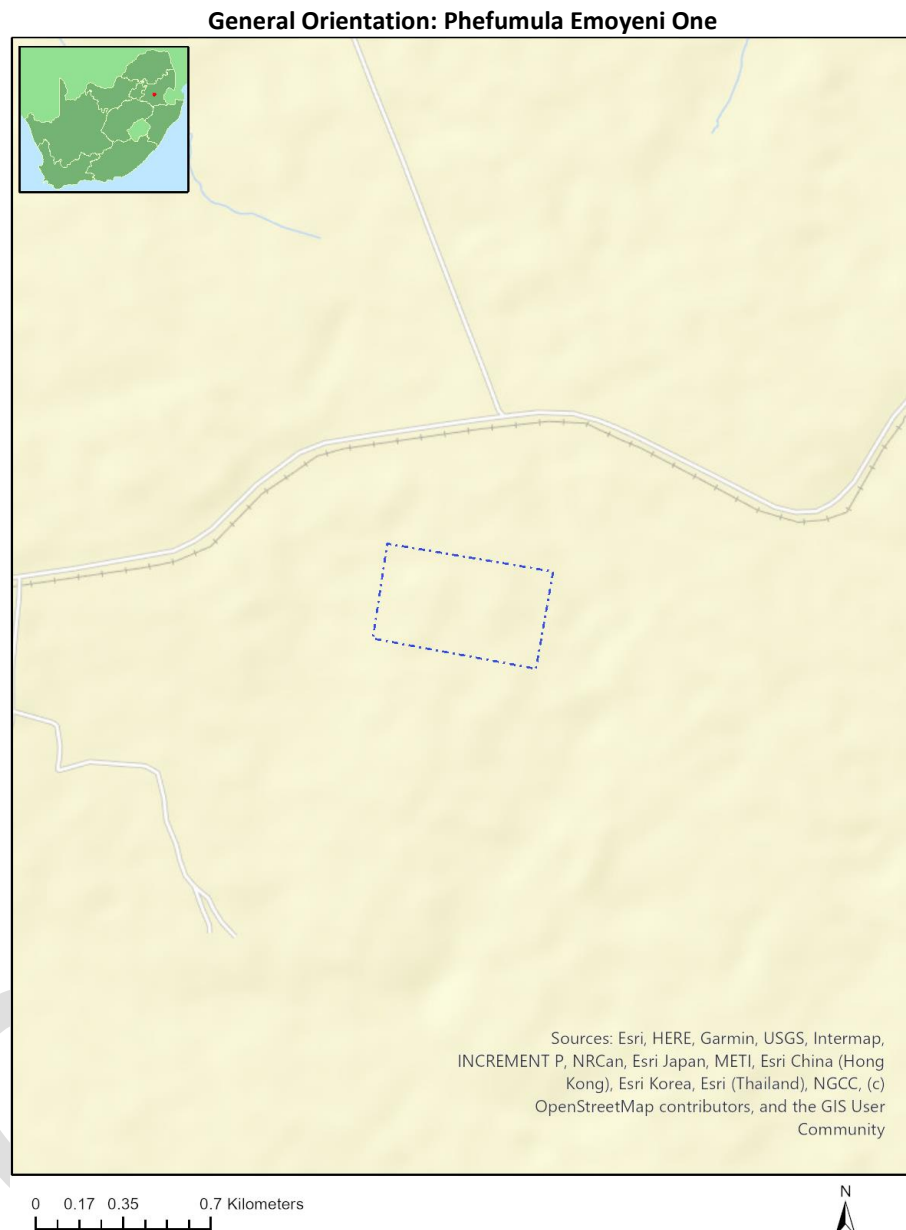
**Application Category:** Utilities Infrastructure|Electricity|Distribution and  
Transmission|Substation

## Table of Contents

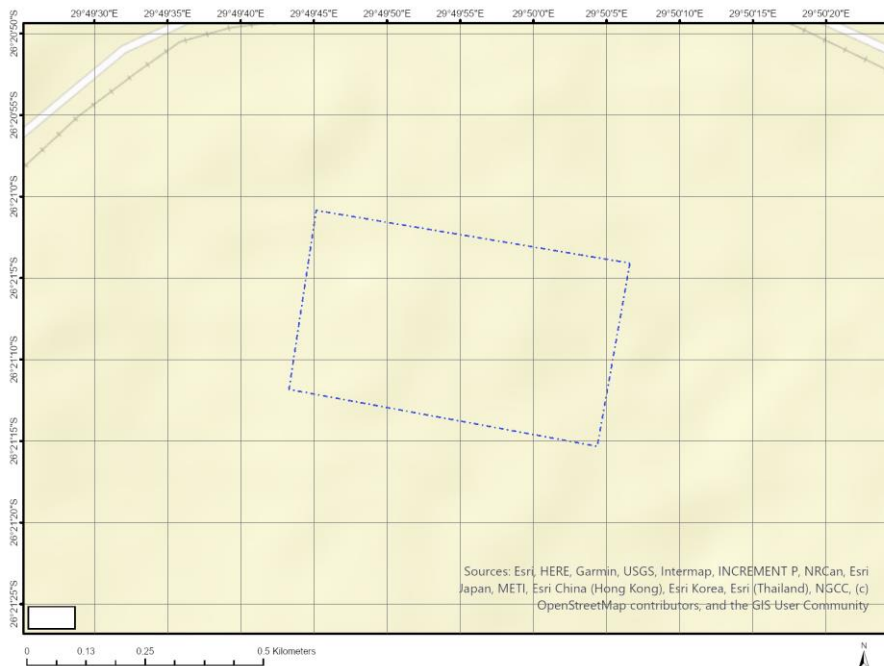
Proposed Project Location .....	3
Orientation map 1: General location .....	3
Map of proposed site and relevant area(s) .....	4
Cadastral details of the proposed site .....	4
Wind and Solar developments with an approved Environmental Authorisation or applications under consideration within 30 km of the proposed area .....	4
Environmental Management Frameworks relevant to the application .....	5
Environmental screening results and assessment outcomes .....	5
Relevant development incentives, restrictions, exclusions or prohibitions .....	5
Proposed Development Area Environmental Sensitivity .....	5
Specialist assessments identified .....	6
Results of the environmental sensitivity of the proposed area .....	7
MAP OF RELATIVE AGRICULTURE THEME SENSITIVITY .....	7
MAP OF RELATIVE ANIMAL SPECIES THEME SENSITIVITY .....	8
MAP OF RELATIVE AQUATIC BIODIVERSITY THEME SENSITIVITY .....	9
MAP OF RELATIVE ARCHAEOLOGICAL AND CULTURAL HERITAGE THEME SENSITIVITY .....	10
MAP OF RELATIVE CIVIL AVIATION THEME SENSITIVITY .....	11
MAP OF RELATIVE DEFENCE THEME SENSITIVITY .....	12
MAP OF RELATIVE PALEONTOLOGY THEME SENSITIVITY .....	13
MAP OF RELATIVE PLANT SPECIES THEME SENSITIVITY .....	14
MAP OF RELATIVE TERRESTRIAL BIODIVERSITY THEME SENSITIVITY .....	15

# Proposed Project Location

## Orientation map 1: General location



## Map of proposed site and relevant area(s)



## Cadastral details of the proposed site

Property details:

No	Farm Name	Farm/ Erf No	Portion	Latitude	Longitude	Property Type
1	KRANSPOORT	248	0	26°22'25.45S	29°51'27.82E	Farm
2	KRANSPOORT	248	6	26°21'17.54S	29°49'14.3E	Farm Portion
3	KRANSPOORT	248	18	26°21'54.15S	29°49'21.47E	Farm Portion
4	KRANSPOORT	248	2	26°21'33.74S	29°50'0.5E	Farm Portion

Development footprint<sup>1</sup> vertices:

No development footprint(s) specified.

## Wind and Solar developments with an approved Environmental Authorisation or applications under consideration within 30 km of the proposed area

No	EIA Reference No	Classification	Status of application	Distance from proposed area (km)
1	14/12/16/3/3/2/2161	Wind	Approved	26.4
2	14/12/16/3/3/2/2131	Wind	Approved	29.9
3	14/12/16/3/3/2/2162	Wind	Approved	26.4
4	14/12/16/3/3/2/2160	Wind	Approved	26.4

<sup>1</sup> "development footprint", means the area within the site on which the development will take place and includes all ancillary developments for example roads, power lines, boundary walls, paving etc. which require vegetation clearance or which will be disturbed and for which the application has been submitted.

## Environmental Management Frameworks relevant to the application

No intersections with EMF areas found.

## Environmental screening results and assessment outcomes

The following sections contain a summary of any development incentives, restrictions, exclusions or prohibitions that apply to the proposed development site as well as the most environmental sensitive features on the site based on the site sensitivity screening results for the application classification that was selected. The application classification selected for this report is:

**Utilities Infrastructure|Electricity|Distribution and Transmission|Substation.**

### Relevant development incentives, restrictions, exclusions or prohibitions

The following development incentives, restrictions, exclusions or prohibitions and their implications that apply to this site are indicated below.

Incentive, restriction or prohibition	Implication
Air Quality-Highveld Priority Area	<a href="https://screening.environment.gov.za/ScreeningDownloads/DevelopmentZones/HIGHVELD_PRIORITY_AREA_AQMP.pdf">https://screening.environment.gov.za/ScreeningDownloads/DevelopmentZones/HIGHVELD_PRIORITY_AREA_AQMP.pdf</a>
Strategic Gas Pipeline Corridors-Phase 8: Rompco Pipeline Corridor	<a href="https://screening.environment.gov.za/ScreeningDownloads/DevelopmentZones/Combined_GAS.pdf">https://screening.environment.gov.za/ScreeningDownloads/DevelopmentZones/Combined_GAS.pdf</a>

### Proposed Development Area Environmental Sensitivity

The following summary of the development site environmental sensitivities is identified. Only the highest environmental sensitivity is indicated. The footprint environmental sensitivities for the proposed development footprint as identified, are indicative only and must be verified on site by a suitably qualified person before the specialist assessments identified below can be confirmed.

Theme	Very High sensitivity	High sensitivity	Medium sensitivity	Low sensitivity
Agriculture Theme		X		
Animal Species Theme			X	
Aquatic Biodiversity Theme	X			
Archaeological and Cultural Heritage Theme				X
Civil Aviation Theme				X
Defence Theme				X
Paleontology Theme	X			
Plant Species Theme				X
Terrestrial Biodiversity Theme	X			

### Specialist assessments identified

Based on the selected classification, and the known impacts associated with the proposed development, the following list of specialist assessments have been identified for inclusion in the assessment report. It is the responsibility of the EAP to confirm this list and to motivate in the assessment report, the reason for not including any of the identified specialist study including the provision of photographic evidence of the site situation.

No	Specialist assessment	Assessment Protocol
1	Geotechnical Assessment	<a href="https://screening.environment.gov.za/ScreeningDownloads/AssessmentProtocols/Gazetted_General_Requirement_Assessment_Protocols.pdf">https://screening.environment.gov.za/ScreeningDownloads/AssessmentProtocols/Gazetted_General_Requirement_Assessment_Protocols.pdf</a>
2	Plant Species Assessment	<a href="https://screening.environment.gov.za/ScreeningDownloads/AssessmentProtocols/Gazetted_Plant_Species_Assessment_Protocols.pdf">https://screening.environment.gov.za/ScreeningDownloads/AssessmentProtocols/Gazetted_Plant_Species_Assessment_Protocols.pdf</a>
3	Animal Species Assessment	<a href="https://screening.environment.gov.za/ScreeningDownloads/AssessmentProtocols/Gazetted_Animal_Species_Assessment_Protocols.pdf">https://screening.environment.gov.za/ScreeningDownloads/AssessmentProtocols/Gazetted_Animal_Species_Assessment_Protocols.pdf</a>
4	Agricultural Impact Assessment	<a href="https://screening.environment.gov.za/ScreeningDownloads/AssessmentProtocols/Gazetted_General_Agriculture_Assessment_Protocols.pdf">https://screening.environment.gov.za/ScreeningDownloads/AssessmentProtocols/Gazetted_General_Agriculture_Assessment_Protocols.pdf</a>
5	Archaeological and Cultural Heritage Impact Assessment	<a href="https://screening.environment.gov.za/ScreeningDownloads/AssessmentProtocols/Gazetted_General_Requirement_Assessment_Protocols.pdf">https://screening.environment.gov.za/ScreeningDownloads/AssessmentProtocols/Gazetted_General_Requirement_Assessment_Protocols.pdf</a>
6	Palaeontology Impact Assessment	<a href="https://screening.environment.gov.za/ScreeningDownloads/AssessmentProtocols/Gazetted_General_Requirement_Assessment_Protocols.pdf">https://screening.environment.gov.za/ScreeningDownloads/AssessmentProtocols/Gazetted_General_Requirement_Assessment_Protocols.pdf</a>
7	Terrestrial Biodiversity Impact Assessment	<a href="https://screening.environment.gov.za/ScreeningDownloads/AssessmentProtocols/Gazetted_Terrestrial_Biodiversity_Assessment_Protocols.pdf">https://screening.environment.gov.za/ScreeningDownloads/AssessmentProtocols/Gazetted_Terrestrial_Biodiversity_Assessment_Protocols.pdf</a>
8	Aquatic Biodiversity Impact Assessment	<a href="https://screening.environment.gov.za/ScreeningDownloads/AssessmentProtocols/Gazetted_Aquatic_Biodiversity_Assessment_Protocols.pdf">https://screening.environment.gov.za/ScreeningDownloads/AssessmentProtocols/Gazetted_Aquatic_Biodiversity_Assessment_Protocols.pdf</a>

# Results of the environmental sensitivity of the proposed area.

The following section represents the results of the screening for environmental sensitivity of the proposed site for relevant environmental themes associated with the project classification. It is the duty of the EAP to ensure that the environmental themes provided by the screening tool are comprehensive and complete for the project. Refer to the disclaimer.

## MAP OF RELATIVE AGRICULTURE THEME SENSITIVITY



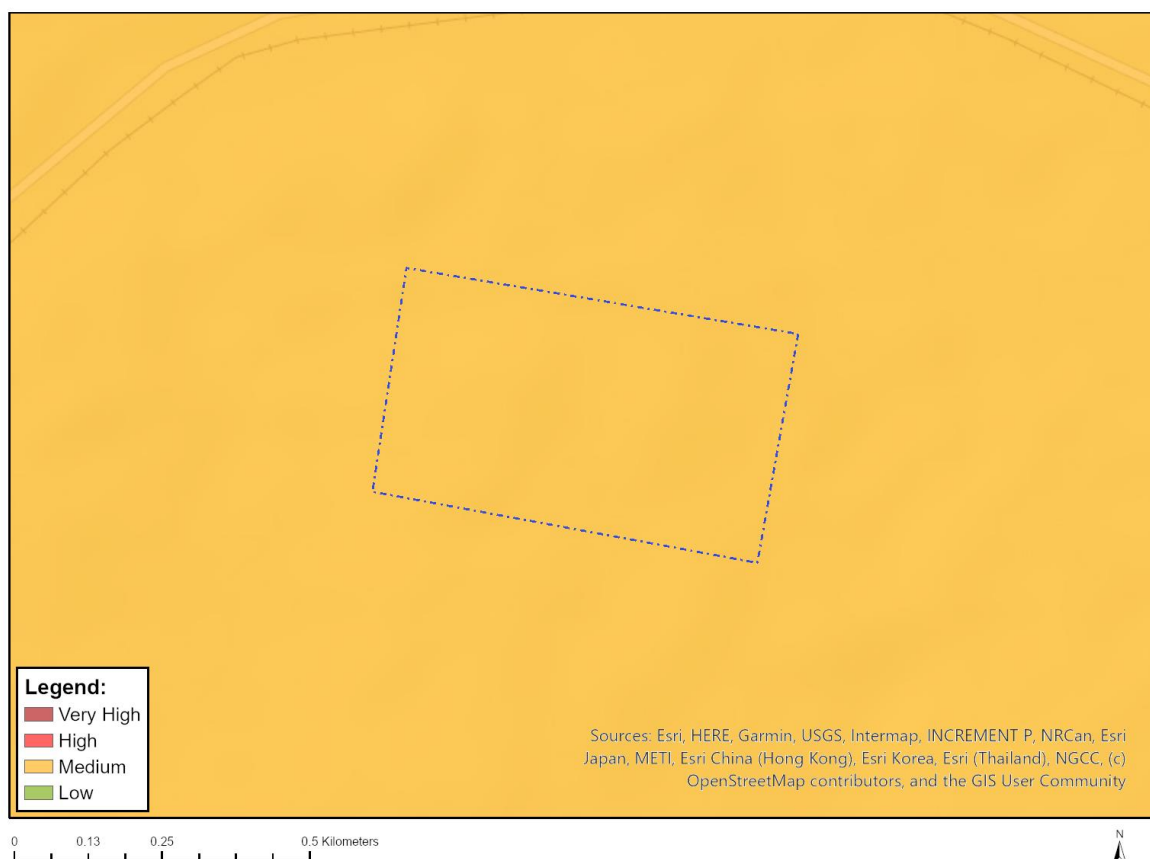
Very High sensitivity	High sensitivity	Medium sensitivity	Low sensitivity
	X		

### Sensitivity Features:

Sensitivity	Feature(s)
High	Land capability;09. Moderate-High/10. Moderate-High
Medium	Land capability;06. Low-Moderate/07. Low-Moderate/08. Moderate



## MAP OF RELATIVE ANIMAL SPECIES THEME SENSITIVITY



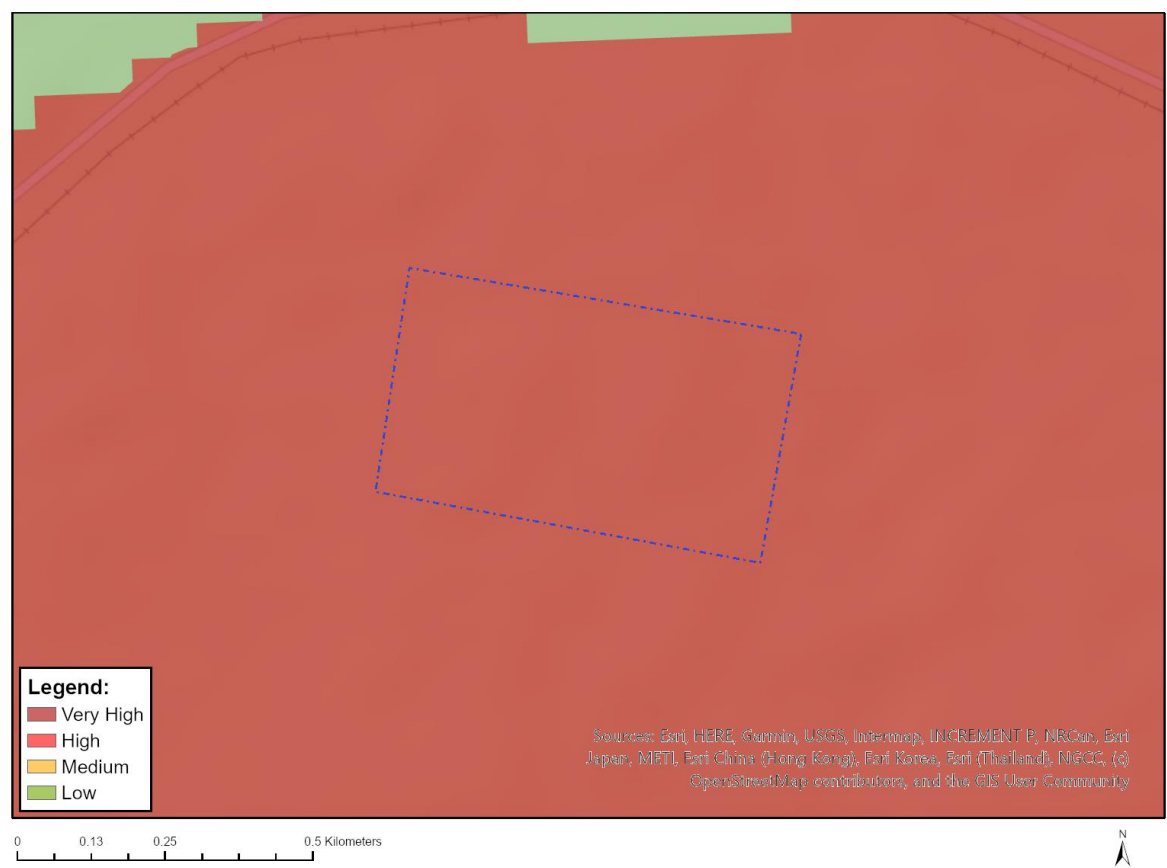
Where only a sensitive plant unique number or sensitive animal unique number is provided in the screening report and an assessment is required, the environmental assessment practitioner (EAP) or specialist is required to email SANBI at [eiadatarequests@sanbi.org.za](mailto:eiadatarequests@sanbi.org.za) listing all sensitive species with their unique identifiers for which information is required. The name has been withheld as the species may be prone to illegal harvesting and must be protected. SANBI will release the actual species name after the details of the EAP or specialist have been documented.

Very High sensitivity	High sensitivity	Medium sensitivity	Low sensitivity
		X	

### Sensitivity Features:

Sensitivity	Feature(s)
Medium	Mammalia-Crocidura maquassiensis
Medium	Mammalia-Ourebia ourebi ourebi

MAP OF RELATIVE AQUATIC BIODIVERSITY THEME SENSITIVITY



Very High sensitivity	High sensitivity	Medium sensitivity	Low sensitivity
X			

Sensitivity Features:

Sensitivity	Feature(s)
Very High	ESA: Important subcatchments
Very High	FEPA Subcatchment

# MAP OF RELATIVE ARCHAEOLOGICAL AND CULTURAL HERITAGE THEME SENSITIVITY



Very High sensitivity	High sensitivity	Medium sensitivity	Low sensitivity
			X

## Sensitivity Features:

Sensitivity	Feature(s)
Low	Low sensitivity

MAP OF RELATIVE CIVIL AVIATION THEME SENSITIVITY



Very High sensitivity	High sensitivity	Medium sensitivity	Low sensitivity
			X

Sensitivity Features:

Sensitivity	Feature(s)
Low	Low sensitivity

MAP OF RELATIVE DEFENCE THEME SENSITIVITY

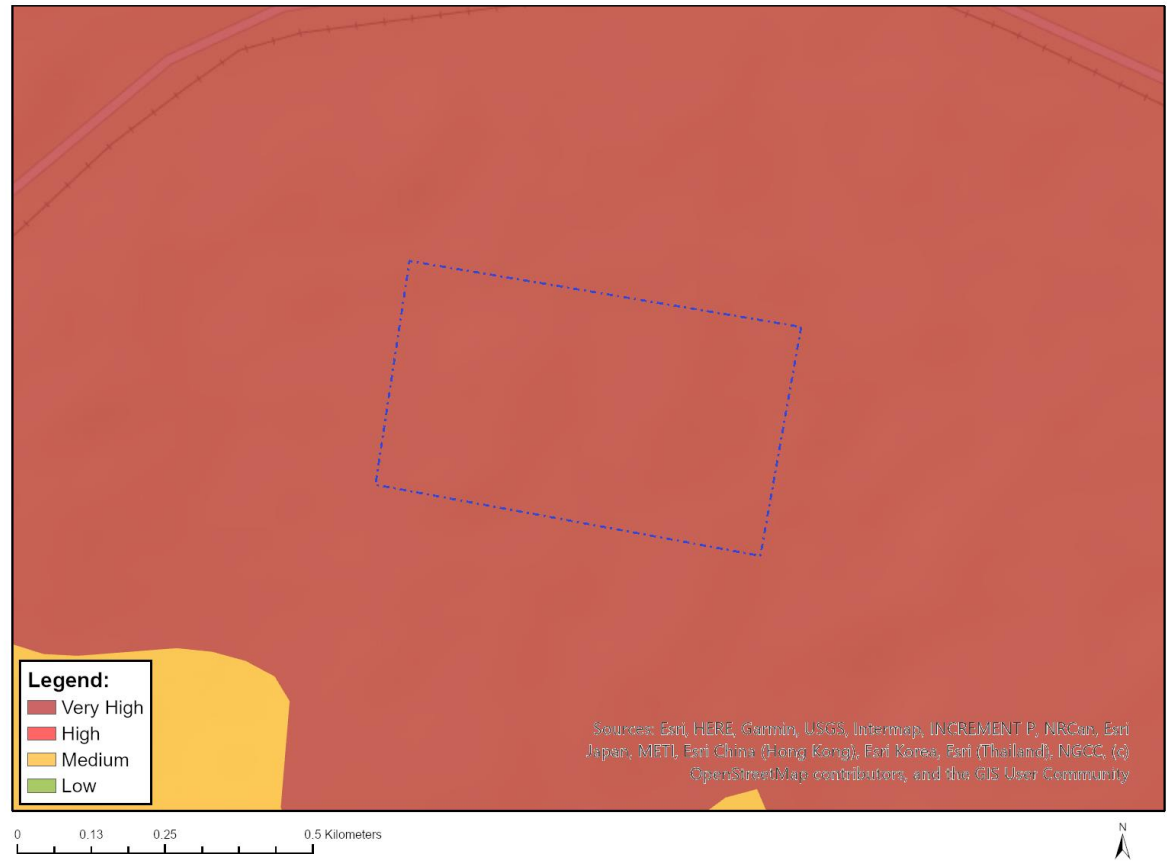


Very High sensitivity	High sensitivity	Medium sensitivity	Low sensitivity
			X

Sensitivity Features:

Sensitivity	Feature(s)
Low	Low Sensitivity

MAP OF RELATIVE PALEONTOLOGY THEME SENSITIVITY



Very High sensitivity	High sensitivity	Medium sensitivity	Low sensitivity
X			

Sensitivity Features:

Sensitivity	Feature(s)
Medium	Features with a Medium paleontological sensitivity
Very High	Features with a Very High paleontological sensitivity

MAP OF RELATIVE PLANT SPECIES THEME SENSITIVITY



Where only a sensitive plant unique number or sensitive animal unique number is provided in the screening report and an assessment is required, the environmental assessment practitioner (EAP) or specialist is required to email SANBI at [eiadatarequests@sanbi.org.za](mailto:eiadatarequests@sanbi.org.za) listing all sensitive species with their unique identifiers for which information is required. The name has been withheld as the species may be prone to illegal harvesting and must be protected. SANBI will release the actual species name after the details of the EAP or specialist have been documented.

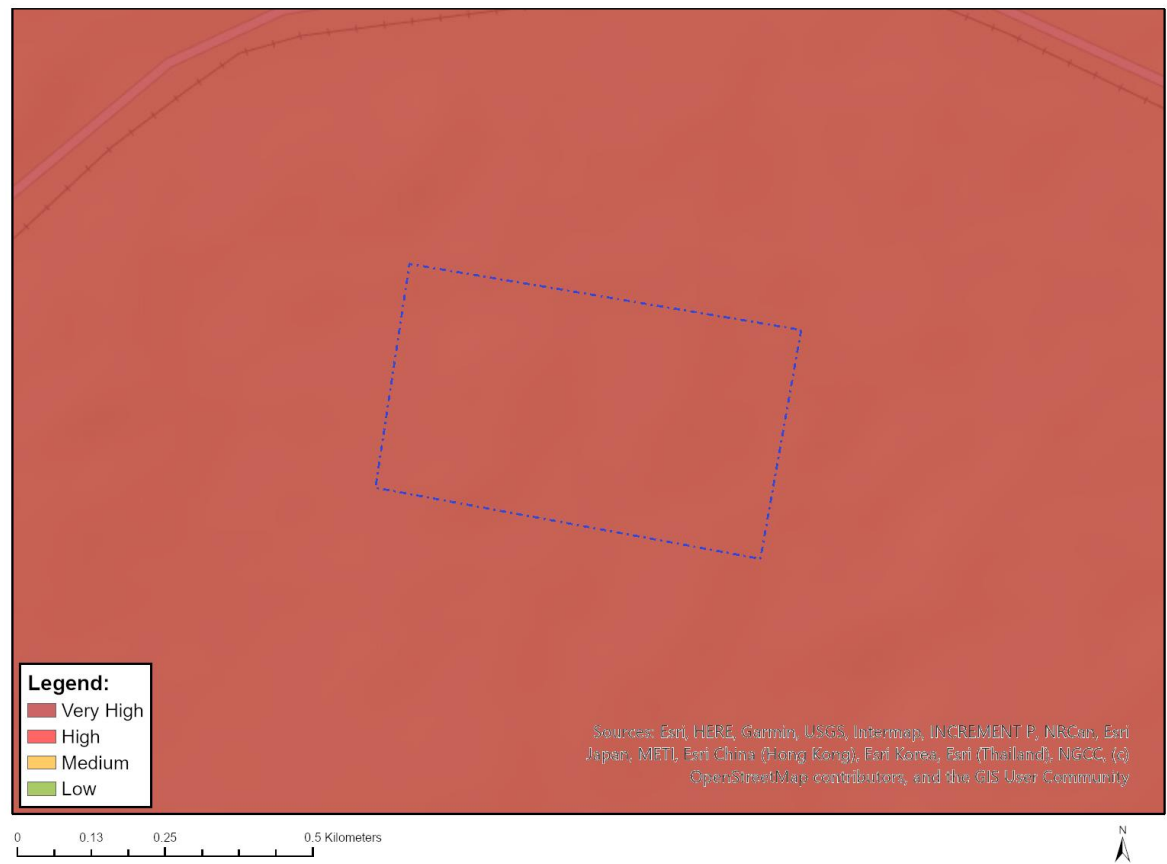
Very High sensitivity	High sensitivity	Medium sensitivity	Low sensitivity
			X

Sensitivity Features:

Sensitivity	Feature(s)
Low	Low Sensitivity



MAP OF RELATIVE TERRESTRIAL BIODIVERSITY THEME SENSITIVITY



Very High sensitivity	High sensitivity	Medium sensitivity	Low sensitivity
X			

Sensitivity Features:

Sensitivity	Feature(s)
Very High	FEPA Subcatchment
Very High	VU_Soweto Highveld Grassland

**SCREENING REPORT FOR AN ENVIRONMENTAL AUTHORIZATION AS  
REQUIRED BY THE 2014 EIA REGULATIONS – PROPOSED SITE  
ENVIRONMENTAL SENSITIVITY**

**EIA Reference number:** TBC

**Project name:** Phefumula Emoyeni One

**Project title:** Substation (DX3)

**Date screening report generated:** 18/02/2025 12:50:29

**Applicant:** Phefumula Emoyeni One (Pty) Ltd

**Compiler:** WSP Group Africa (Pty) Ltd

**Compiler signature:**

.....

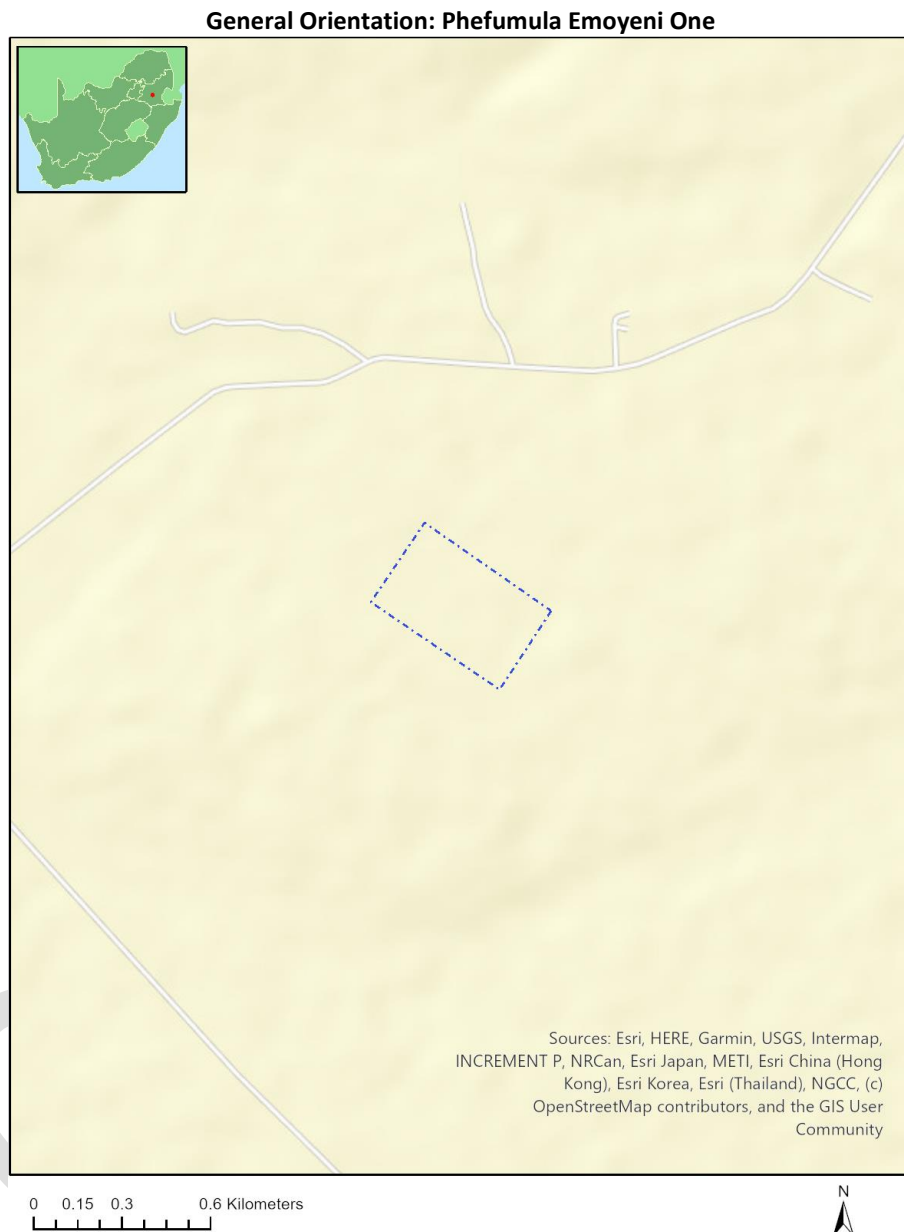
**Application Category:** Utilities Infrastructure|Electricity|Distribution and  
Transmission|Substation

## Table of Contents

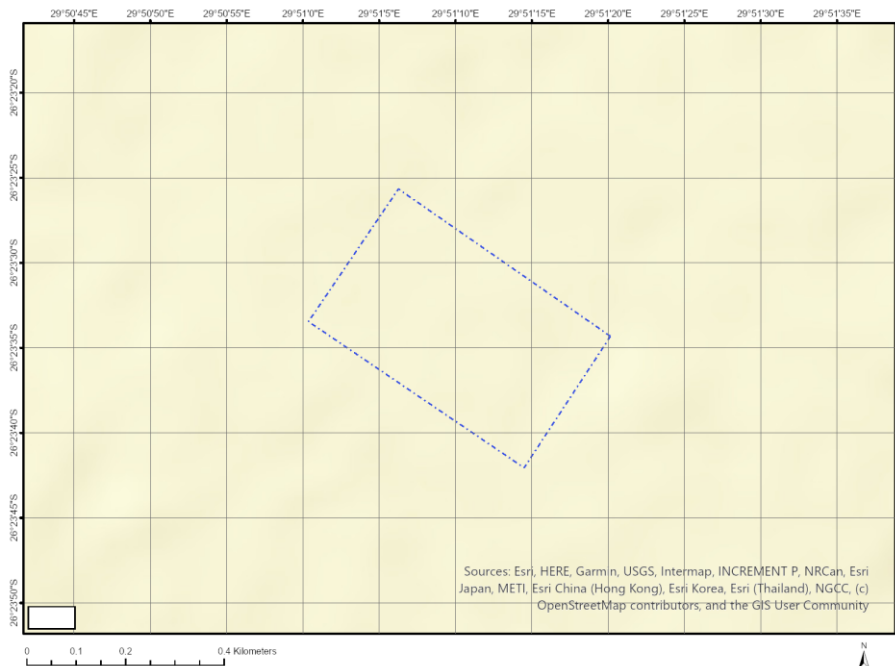
Proposed Project Location .....	3
Orientation map 1: General location .....	3
Map of proposed site and relevant area(s) .....	4
Cadastral details of the proposed site .....	4
Wind and Solar developments with an approved Environmental Authorisation or applications under consideration within 30 km of the proposed area .....	4
Environmental Management Frameworks relevant to the application .....	5
Environmental screening results and assessment outcomes .....	5
Relevant development incentives, restrictions, exclusions or prohibitions .....	5
Proposed Development Area Environmental Sensitivity .....	5
Specialist assessments identified .....	5
Results of the environmental sensitivity of the proposed area .....	7
MAP OF RELATIVE AGRICULTURE THEME SENSITIVITY .....	7
MAP OF RELATIVE ANIMAL SPECIES THEME SENSITIVITY .....	8
MAP OF RELATIVE AQUATIC BIODIVERSITY THEME SENSITIVITY .....	9
MAP OF RELATIVE ARCHAEOLOGICAL AND CULTURAL HERITAGE THEME SENSITIVITY .....	10
MAP OF RELATIVE CIVIL AVIATION THEME SENSITIVITY .....	11
MAP OF RELATIVE DEFENCE THEME SENSITIVITY .....	12
MAP OF RELATIVE PALEONTOLOGY THEME SENSITIVITY .....	13
MAP OF RELATIVE PLANT SPECIES THEME SENSITIVITY .....	14
MAP OF RELATIVE TERRESTRIAL BIODIVERSITY THEME SENSITIVITY .....	15

# Proposed Project Location

## Orientation map 1: General location



# Map of proposed site and relevant area(s)



## Cadastral details of the proposed site

Property details:

No	Farm Name	Farm/ Erf No	Portion	Latitude	Longitude	Property Type
1	KRANSPOORT	248	0	26°22'25.45S	29°51'27.82E	Farm
2	KRANSPOORT	248	3	26°23'47.98S	29°51'6.52E	Farm Portion

Development footprint<sup>1</sup> vertices:  
No development footprint(s) specified.

## Wind and Solar developments with an approved Environmental Authorisation or applications under consideration within 30 km of the proposed area

No	EIA Reference No	Classification	Status of application	Distance from proposed area (km)
1	14/12/16/3/3/2/2161	Wind	Approved	26.4
2	14/12/16/3/3/2/2162	Wind	Approved	26.4
3	14/12/16/3/3/2/2160	Wind	Approved	26.4

<sup>1</sup> “development footprint”, means the area within the site on which the development will take place and includes all ancillary developments for example roads, power lines, boundary walls, paving etc. which require vegetation clearance or which will be disturbed and for which the application has been submitted.

## Environmental Management Frameworks relevant to the application

No intersections with EMF areas found.

## Environmental screening results and assessment outcomes

The following sections contain a summary of any development incentives, restrictions, exclusions or prohibitions that apply to the proposed development site as well as the most environmental sensitive features on the site based on the site sensitivity screening results for the application classification that was selected. The application classification selected for this report is:

**Utilities Infrastructure | Electricity | Distribution and Transmission | Substation.**

### Relevant development incentives, restrictions, exclusions or prohibitions

The following development incentives, restrictions, exclusions or prohibitions and their implications that apply to this site are indicated below.

Incentive, restriction or prohibition	Implication
Air Quality-Highveld Priority Area	<a href="https://screening.environment.gov.za/ScreeningDownloads/DevelopmentZones/HIGHVELD_PRIORITY_AREA_AQMP.pdf">https://screening.environment.gov.za/ScreeningDownloads/DevelopmentZones/HIGHVELD_PRIORITY_AREA_AQMP.pdf</a>
Strategic Gas Pipeline Corridors-Phase 8: Rompco Pipeline Corridor	<a href="https://screening.environment.gov.za/ScreeningDownloads/DevelopmentZones/Combined_GAS.pdf">https://screening.environment.gov.za/ScreeningDownloads/DevelopmentZones/Combined_GAS.pdf</a>

### Proposed Development Area Environmental Sensitivity

The following summary of the development site environmental sensitivities is identified. Only the highest environmental sensitivity is indicated. The footprint environmental sensitivities for the proposed development footprint as identified, are indicative only and must be verified on site by a suitably qualified person before the specialist assessments identified below can be confirmed.

Theme	Very High sensitivity	High sensitivity	Medium sensitivity	Low sensitivity
Agriculture Theme		X		
Animal Species Theme			X	
Aquatic Biodiversity Theme	X			
Archaeological and Cultural Heritage Theme				X
Civil Aviation Theme				X
Defence Theme				X
Paleontology Theme	X			
Plant Species Theme			X	
Terrestrial Biodiversity Theme	X			

### Specialist assessments identified

Based on the selected classification, and the known impacts associated with the proposed development, the following list of specialist assessments have been identified for inclusion in the assessment report. It is the responsibility of the EAP to confirm this list and to motivate in the

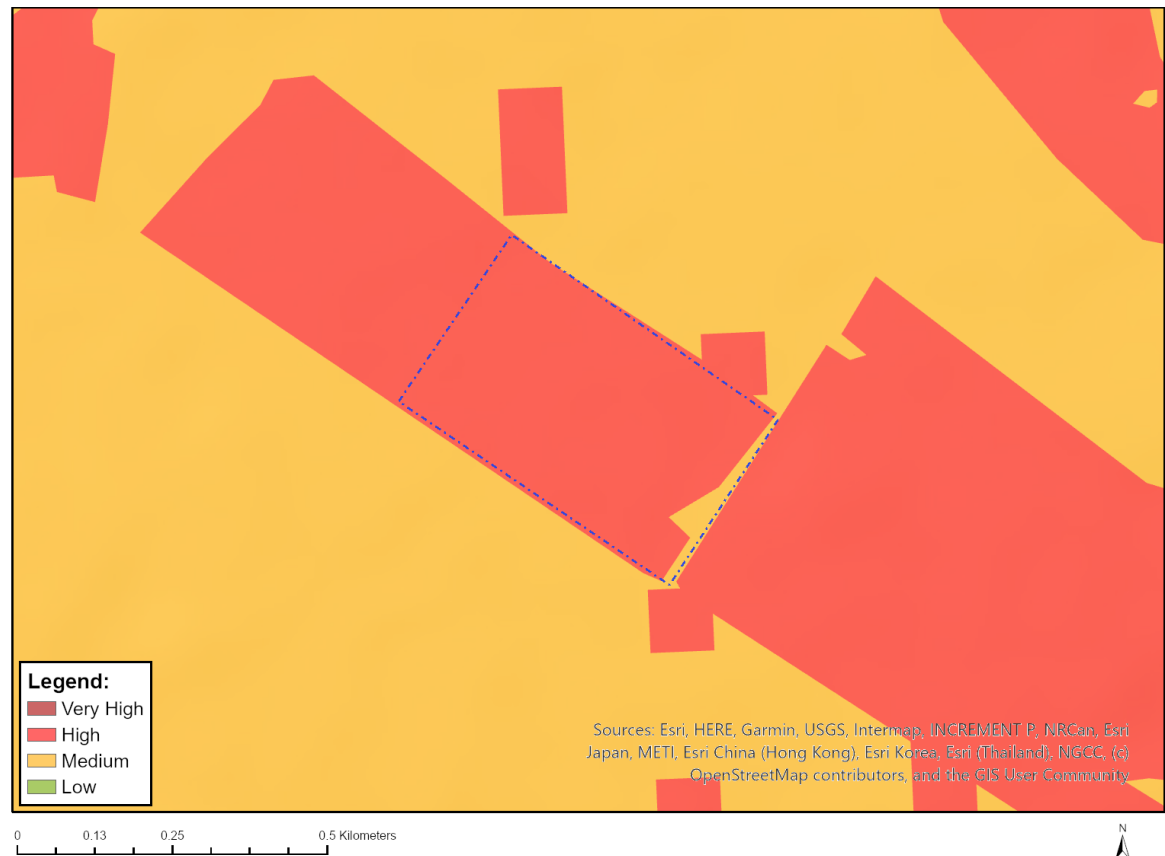
assessment report, the reason for not including any of the identified specialist study including the provision of photographic evidence of the site situation.

No	Specialist assessment	Assessment Protocol
1	Geotechnical Assessment	<a href="https://screening.environment.gov.za/ScreeningDownloads/AssessmentProtocols/Gazetted_General_Requirement_Assessment_Protocols.pdf">https://screening.environment.gov.za/ScreeningDownloads/AssessmentProtocols/Gazetted_General_Requirement_Assessment_Protocols.pdf</a>
2	Plant Species Assessment	<a href="https://screening.environment.gov.za/ScreeningDownloads/AssessmentProtocols/Gazetted_Plant_Species_Assessment_Protocols.pdf">https://screening.environment.gov.za/ScreeningDownloads/AssessmentProtocols/Gazetted_Plant_Species_Assessment_Protocols.pdf</a>
3	Animal Species Assessment	<a href="https://screening.environment.gov.za/ScreeningDownloads/AssessmentProtocols/Gazetted_Animal_Species_Assessment_Protocols.pdf">https://screening.environment.gov.za/ScreeningDownloads/AssessmentProtocols/Gazetted_Animal_Species_Assessment_Protocols.pdf</a>
4	Agricultural Impact Assessment	<a href="https://screening.environment.gov.za/ScreeningDownloads/AssessmentProtocols/Gazetted_General_Agriculture_Assessment_Protocols.pdf">https://screening.environment.gov.za/ScreeningDownloads/AssessmentProtocols/Gazetted_General_Agriculture_Assessment_Protocols.pdf</a>
5	Archaeological and Cultural Heritage Impact Assessment	<a href="https://screening.environment.gov.za/ScreeningDownloads/AssessmentProtocols/Gazetted_General_Requirement_Assessment_Protocols.pdf">https://screening.environment.gov.za/ScreeningDownloads/AssessmentProtocols/Gazetted_General_Requirement_Assessment_Protocols.pdf</a>
6	Palaeontology Impact Assessment	<a href="https://screening.environment.gov.za/ScreeningDownloads/AssessmentProtocols/Gazetted_General_Requirement_Assessment_Protocols.pdf">https://screening.environment.gov.za/ScreeningDownloads/AssessmentProtocols/Gazetted_General_Requirement_Assessment_Protocols.pdf</a>
7	Terrestrial Biodiversity Impact Assessment	<a href="https://screening.environment.gov.za/ScreeningDownloads/AssessmentProtocols/Gazetted_Terrestrial_Biodiversity_Assessment_Protocols.pdf">https://screening.environment.gov.za/ScreeningDownloads/AssessmentProtocols/Gazetted_Terrestrial_Biodiversity_Assessment_Protocols.pdf</a>
8	Aquatic Biodiversity Impact Assessment	<a href="https://screening.environment.gov.za/ScreeningDownloads/AssessmentProtocols/Gazetted_Aquatic_Biodiversity_Assessment_Protocols.pdf">https://screening.environment.gov.za/ScreeningDownloads/AssessmentProtocols/Gazetted_Aquatic_Biodiversity_Assessment_Protocols.pdf</a>

# Results of the environmental sensitivity of the proposed area.

The following section represents the results of the screening for environmental sensitivity of the proposed site for relevant environmental themes associated with the project classification. It is the duty of the EAP to ensure that the environmental themes provided by the screening tool are comprehensive and complete for the project. Refer to the disclaimer.

## MAP OF RELATIVE AGRICULTURE THEME SENSITIVITY



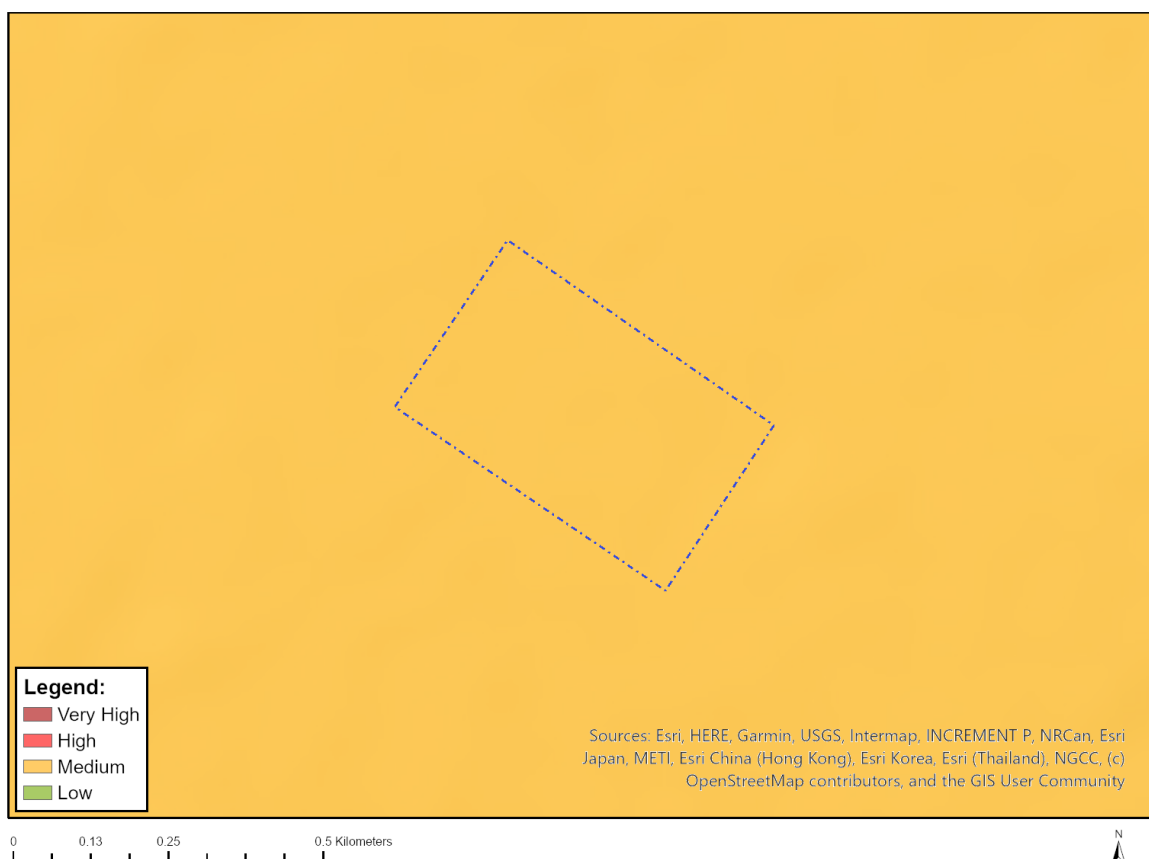
Very High sensitivity	High sensitivity	Medium sensitivity	Low sensitivity
	X		

### Sensitivity Features:

Sensitivity	Feature(s)
High	Annual Crop Cultivation / Planted Pastures Rotation;Land capability;09. Moderate-High/10. Moderate-High
High	Annual Crop Cultivation / Planted Pastures Rotation;Land capability;06. Low-Moderate/07. Low-Moderate/08. Moderate
Medium	Land capability;06. Low-Moderate/07. Low-Moderate/08. Moderate



## MAP OF RELATIVE ANIMAL SPECIES THEME SENSITIVITY



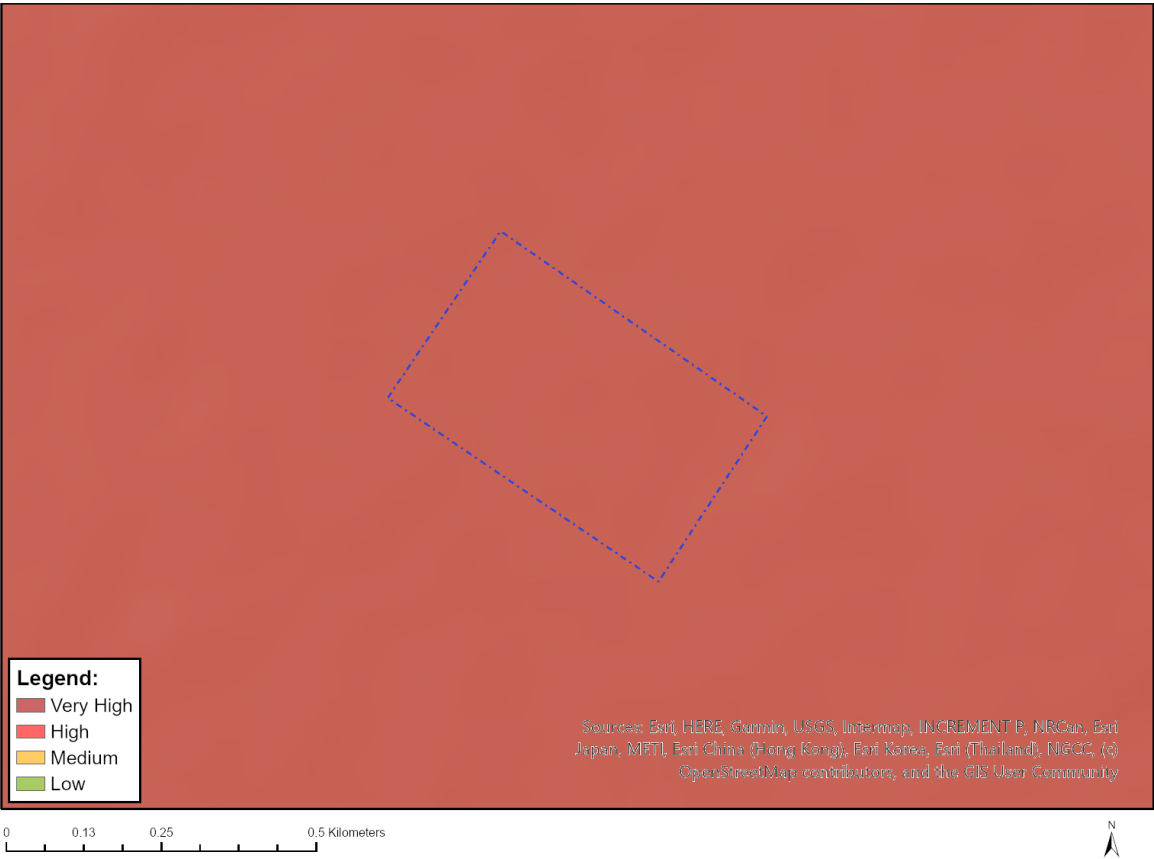
Where only a sensitive plant unique number or sensitive animal unique number is provided in the screening report and an assessment is required, the environmental assessment practitioner (EAP) or specialist is required to email SANBI at [eiadatarequests@sanbi.org.za](mailto:eiadatarequests@sanbi.org.za) listing all sensitive species with their unique identifiers for which information is required. The name has been withheld as the species may be prone to illegal harvesting and must be protected. SANBI will release the actual species name after the details of the EAP or specialist have been documented.

Very High sensitivity	High sensitivity	Medium sensitivity	Low sensitivity
		X	

### Sensitivity Features:

Sensitivity	Feature(s)
Medium	Aves-Tyto capensis
Medium	Aves-Geronticus calvus
Medium	Insecta-Lepidochrysops procera
Medium	Mammalia-Crocidura maquassiensis
Medium	Mammalia-Ourebia ourebi ourebi

MAP OF RELATIVE AQUATIC BIODIVERSITY THEME SENSITIVITY

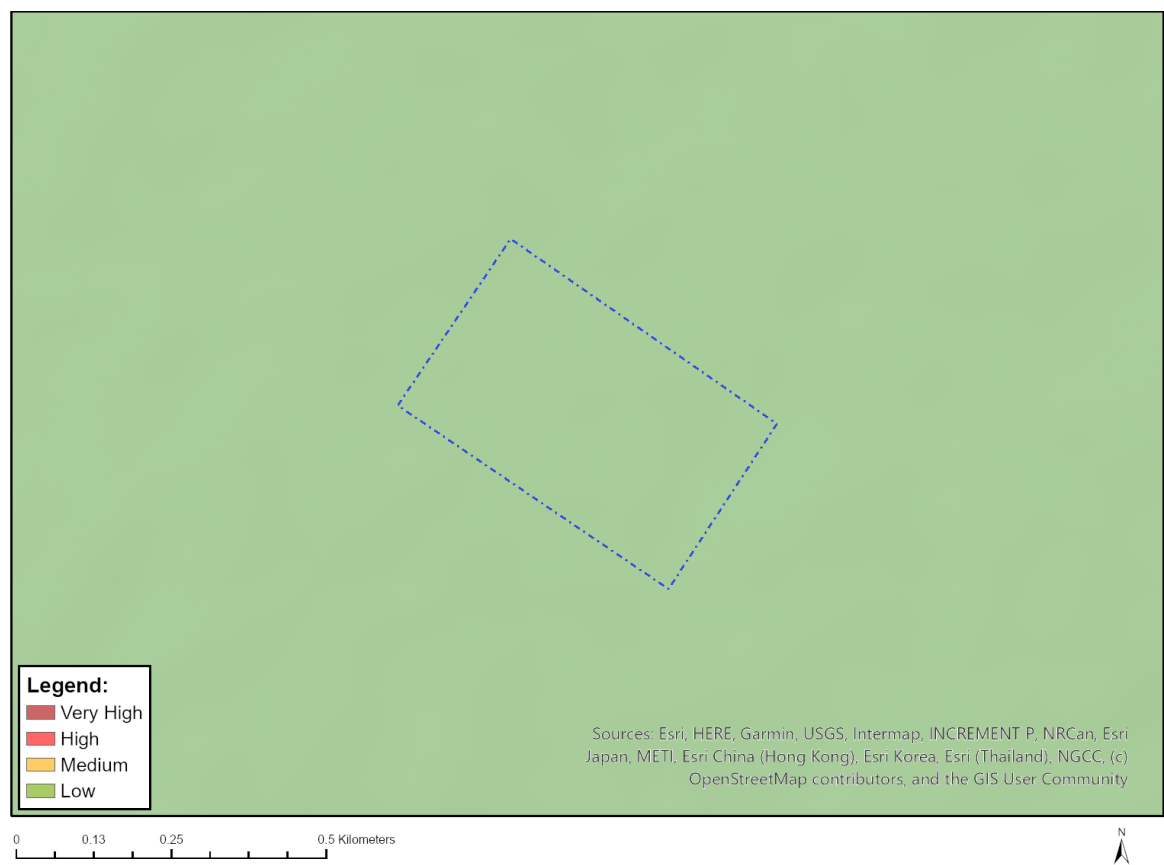


Very High sensitivity	High sensitivity	Medium sensitivity	Low sensitivity
X			

Sensitivity Features:

Sensitivity	Feature(s)
Very High	ESA: Important subcatchments
Very High	FEPA Subcatchment

# MAP OF RELATIVE ARCHAEOLOGICAL AND CULTURAL HERITAGE THEME SENSITIVITY



Very High sensitivity	High sensitivity	Medium sensitivity	Low sensitivity
			X

## Sensitivity Features:

Sensitivity	Feature(s)
Low	Low sensitivity

MAP OF RELATIVE CIVIL AVIATION THEME SENSITIVITY



Very High sensitivity	High sensitivity	Medium sensitivity	Low sensitivity
			X

Sensitivity Features:

Sensitivity	Feature(s)
Low	Low sensitivity

MAP OF RELATIVE DEFENCE THEME SENSITIVITY

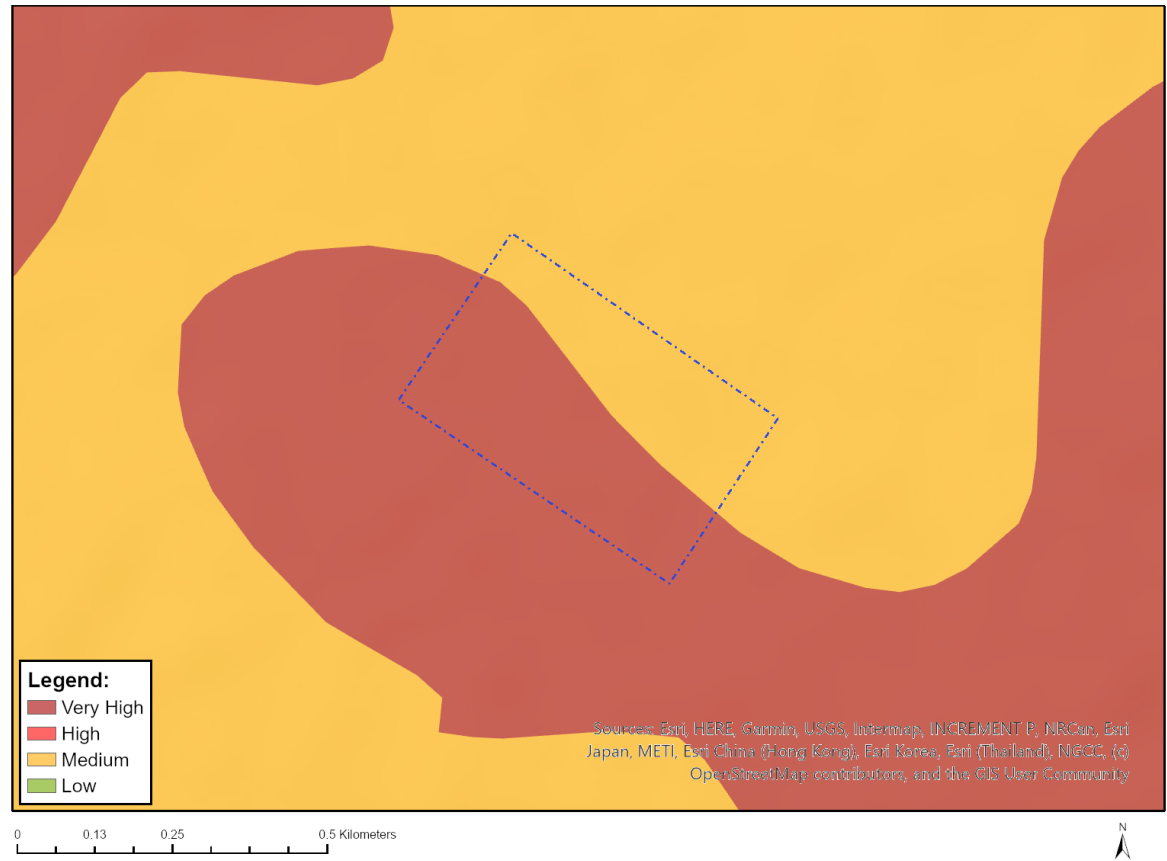


Very High sensitivity	High sensitivity	Medium sensitivity	Low sensitivity
			X

Sensitivity Features:

Sensitivity	Feature(s)
Low	Low Sensitivity

MAP OF RELATIVE PALEONTOLOGY THEME SENSITIVITY



Very High sensitivity	High sensitivity	Medium sensitivity	Low sensitivity
X			

Sensitivity Features:

Sensitivity	Feature(s)
Medium	Features with a Medium paleontological sensitivity
Very High	Features with a Very High paleontological sensitivity

## MAP OF RELATIVE PLANT SPECIES THEME SENSITIVITY



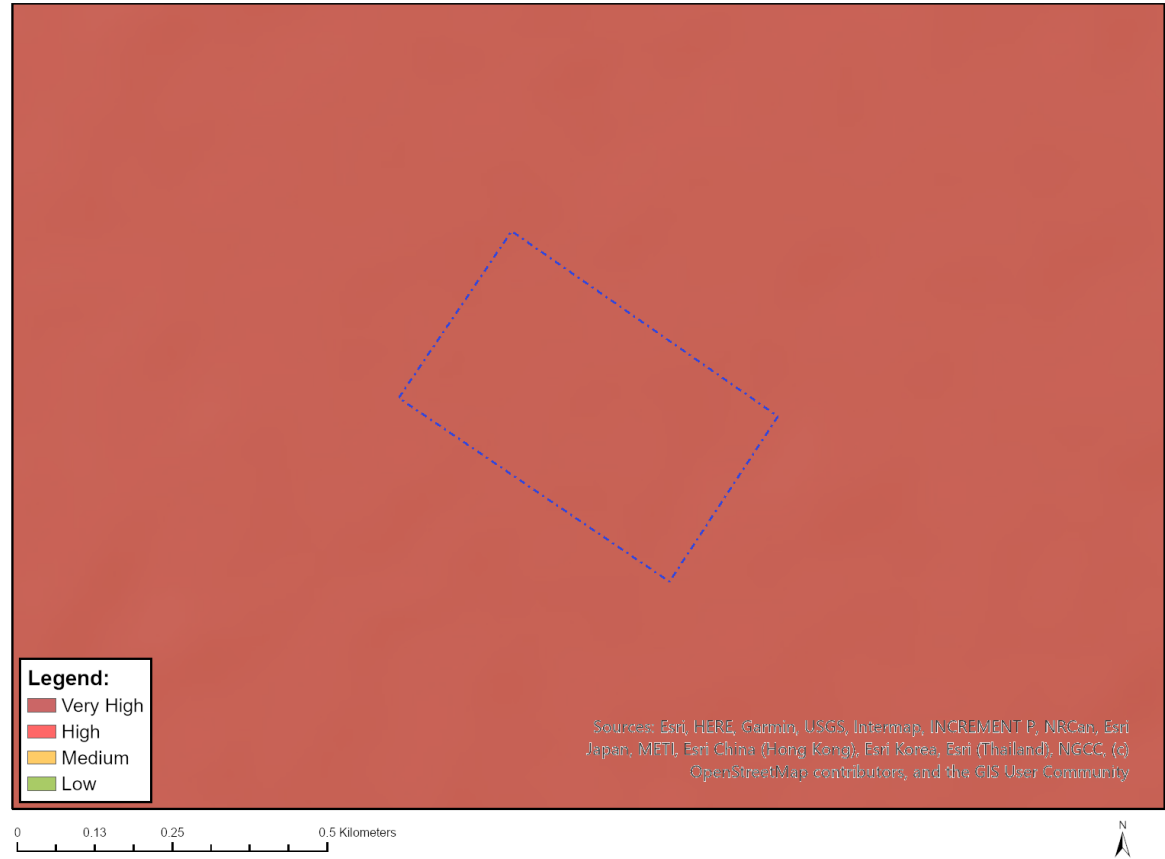
Where only a sensitive plant unique number or sensitive animal unique number is provided in the screening report and an assessment is required, the environmental assessment practitioner (EAP) or specialist is required to email SANBI at [eiadatarequests@sanbi.org.za](mailto:eiadatarequests@sanbi.org.za) listing all sensitive species with their unique identifiers for which information is required. The name has been withheld as the species may be prone to illegal harvesting and must be protected. SANBI will release the actual species name after the details of the EAP or specialist have been documented.

Very High sensitivity	High sensitivity	Medium sensitivity	Low sensitivity
		X	

### Sensitivity Features:

Sensitivity	Feature(s)
Low	Low Sensitivity
Medium	Sensitive species 1252
Medium	Aspidoglossum xanthosphaerum
Medium	Miraglossum davyi
Medium	Sensitive species 691
Medium	Pachycarpus suaveolens

MAP OF RELATIVE TERRESTRIAL BIODIVERSITY THEME SENSITIVITY



Very High sensitivity	High sensitivity	Medium sensitivity	Low sensitivity
X			

Sensitivity Features:

Sensitivity	Feature(s)
Very High	FEPA Subcatchment
Very High	National Protected Area Expansion Strategy (NPAES)
Very High	VU_Soweto Highveld Grassland