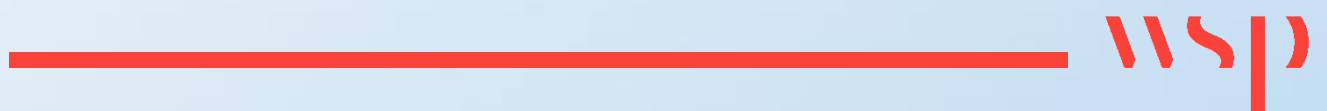


Appendix E

DFFE SCREENING TOOL REPORT



**SCREENING REPORT FOR AN ENVIRONMENTAL AUTHORIZATION AS
REQUIRED BY THE 2014 EIA REGULATIONS – PROPOSED SITE
ENVIRONMENTAL SENSITIVITY**

EIA Reference number: TBC

Project name: Verkykerskop WEF Cluster

Project title: Verkykerskop WEF Cluster - Kromhof

Date screening report generated: 30/09/2024 11:57:47

Applicant: Mulilo Renewable Project Developments

Compiler: WSP Group Africa

Compiler signature:



Application Category: Utilities Infrastructure | Electricity | Generation | Renewable | Wind

Table of Contents

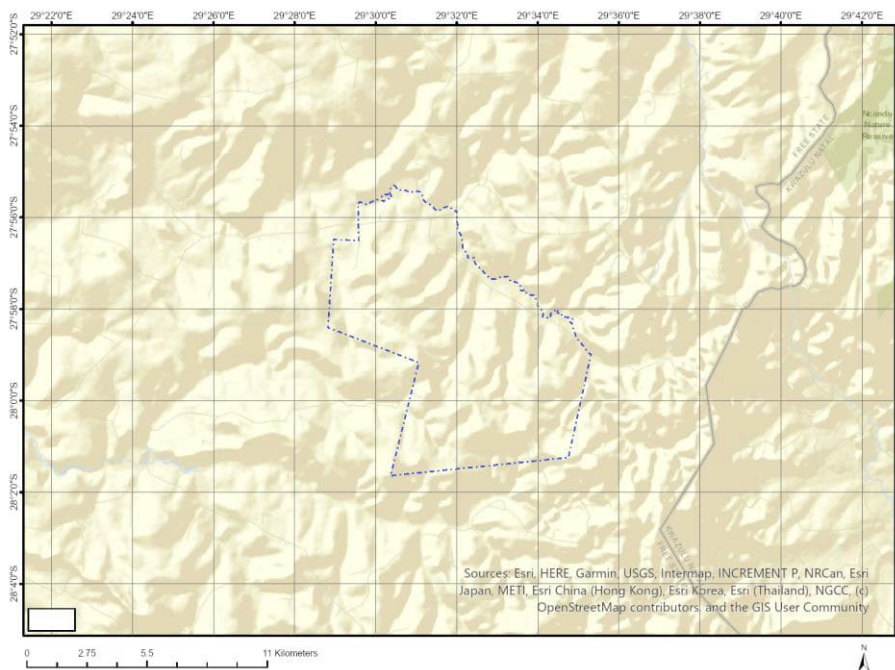
Proposed Project Location	3
Orientation map 1: General location	3
Map of proposed site and relevant area(s)	4
Cadastral details of the proposed site	4
Wind and Solar developments with an approved Environmental Authorisation or applications under consideration within 30 km of the proposed area	5
Environmental Management Frameworks relevant to the application	5
Environmental screening results and assessment outcomes	5
Relevant development incentives, restrictions, exclusions or prohibitions	6
Proposed Development Area Environmental Sensitivity	6
Specialist assessments identified	6
Results of the environmental sensitivity of the proposed area	8
MAP OF RELATIVE AGRICULTURE THEME SENSITIVITY	8
MAP OF RELATIVE ANIMAL SPECIES THEME SENSITIVITY	9
MAP OF RELATIVE AQUATIC BIODIVERSITY THEME SENSITIVITY	10
MAP OF RELATIVE ARCHAEOLOGICAL AND CULTURAL HERITAGE THEME SENSITIVITY	11
MAP OF RELATIVE AVIAN (WIND) THEME SENSITIVITY	12
MAP OF RELATIVE BATS (WIND) THEME SENSITIVITY	13
MAP OF RELATIVE CIVIL AVIATION (WIND) THEME SENSITIVITY	14
MAP OF RELATIVE DEFENCE (WIND) THEME SENSITIVITY	15
MAP OF RELATIVE FLICKER THEME SENSITIVITY	16
MAP OF RELATIVE LANDSCAPE (WIND) THEME SENSITIVITY	17
MAP OF RELATIVE PALEONTOLOGY THEME SENSITIVITY	18
MAP OF RELATIVE NOISE THEME SENSITIVITY	19
MAP OF RELATIVE PLANT SPECIES THEME SENSITIVITY	20
MAP OF RELATIVE RFI (WIND) THEME SENSITIVITY	21
MAP OF RELATIVE TERRESTRIAL BIODIVERSITY THEME SENSITIVITY	22
MAP OF RELATIVE VULTURE SPECIES THEME SENSITIVITY	23

Proposed Project Location

Orientation map 1: General location



Map of proposed site and relevant area(s)



Cadastral details of the proposed site

Property details:

No	Farm Name	Farm/ Erf No	Portion	Latitude	Longitude	Property Type
1	HONIG KLOOF	330	0	27°53'39.75S	29°30'39.38E	Farm
2	JOHANNA	1395	0	27°56'47.3S	29°34'0.44E	Farm
3	CHRISTINA	90	0	27°55'58.86S	29°32'27E	Farm
4	AANFIELD	253	0	27°59'29.36S	29°34'21.89E	Farm
5	NAAUW KLOOF	4	0	27°57'26.18S	29°31'14.76E	Farm
6	LAHOCH'S HOEK	262	0	27°55'14.13S	29°29'46.28E	Farm
7	MARKGRAAFF'S REST	478	0	28°0'40.28S	29°32'2.66E	Farm
8	BATH	363	0	28°2'38.68S	29°33'15.18E	Farm
9	OX HOEK	98	0	27°58'38.38S	29°32'35.06E	Farm
10	KROM HOF	530	0	27°56'23.14S	29°30'10.55E	Farm
11	BULL HOEK	329	0	27°57'40.23S	29°34'48.93E	Farm
12	BRAK KRANS	554	0	27°56'35.81S	29°33'5.44E	Farm
13	ROODEBLOEM	1985	0	27°56'45.17S	29°27'45.58E	Farm
14	SPITSKOP	274	0	28°1'59.07S	29°30'17.06E	Farm
15	WINKELS HOEK	1063	0	27°55'17.63S	29°31'58.3E	Farm
16	LEIDEN	2	0	27°57'49.5S	29°29'25.15E	Farm
17	MYN-BURG	3	0	27°56'45.34S	29°30'45.01E	Farm
18	RIVERSIDE	1239	0	27°55'57.66S	29°29'10.23E	Farm
19	PELAAN	1315	0	28°0'44.72S	29°35'57.36E	Farm
20	PUNTJE	1240	0	27°57'12.5S	29°29'48.4E	Farm
21	GROOTHOEK	89	0	27°59'50.19S	29°27'34.31E	Farm
22	CHRISTINA	90	0	27°55'58.86S	29°32'27E	Farm Portion
23	BROEDERSDAL 168	3	0	27°56'45.34S	29°30'45.01E	Farm Portion
24	NAAUW KLOOF	4	0	27°57'26.18S	29°31'14.76E	Farm Portion
25	OX HOEK	98	0	27°59'11.8S	29°33'15.14E	Farm Portion
26	SPITSKOP	274	0	28°1'59.07S	29°30'17.06E	Farm Portion

27	AANFIELD	253	0	27°59'42.81S	29°34'42E	Farm Portion
28	AANFIELD	253	1	27°59'15.69S	29°34'1.47E	Farm Portion
29	BRAK KRANS	554	0	27°56'35.81S	29°33'5.44E	Farm Portion
30	OX HOEK	98	1	27°57'52.87S	29°31'52.86E	Farm Portion
31	OX HOEK	98	2	27°59'17.16S	29°31'49.91E	Farm Portion
32	OX HOEK	98	3	27°58'16.06S	29°32'39.14E	Farm Portion
33	WINKELS HOEK	1063	0	27°55'17.53S	29°31'58.29E	Farm Portion
34	MARKGRAAFF'S REST	478	0	28°0'40.28S	29°32'2.66E	Farm Portion
35	BULL HOEK	329	0	27°57'55.67S	29°34'50.99E	Farm Portion
36	JOHANNA	1395	0	27°56'45.16S	29°34'9.93E	Farm Portion
37	JOHANNA	1395	1	27°56'51.59S	29°33'41.4E	Farm Portion
38	BATH	363	0	28°2'13.46S	29°33'50.51E	Farm Portion
39	BATH	363	1	28°2'1.32S	29°31'18.39E	Farm Portion
40	BATH	363	3	28°1'45.1S	29°32'12.94E	Farm Portion
41	PELAAN	1315	0	28°0'44.72S	29°35'57.36E	Farm Portion
42	PUNTJE	1240	0	27°57'12.5S	29°29'48.4E	Farm Portion
43	HONIG KLOOF	330	0	27°54'27.7S	29°30'44.06E	Farm Portion
44	KROM HOF	530	0	27°56'23.93S	29°30'9.59E	Farm Portion
45	GROOTHOEK	89	0	27°59'50.11S	29°27'39.61E	Farm Portion
46	FRANZHOEK 1006	2	0	27°57'49.08S	29°29'29.06E	Farm Portion
47	RIVERSIDE	1239	0	27°55'57.94S	29°29'15.33E	Farm Portion
48	LAHOCH'S HOEK	262	0	27°55'13.46S	29°29'51.95E	Farm Portion
49	ROODEBLOEM	1985	6	27°57'16.22S	29°27'30.9E	Farm Portion
50	ROODEBLOEM	1985	5	27°56'56.4S	29°28'28.8E	Farm Portion
51	ROODEBLOEM	1985	4	27°56'28.15S	29°28'40.61E	Farm Portion

Development footprint¹ vertices:
No development footprint(s) specified.

Wind and Solar developments with an approved Environmental Authorisation or applications under consideration within 30 km of the proposed area

No nearby wind or solar developments found.

Environmental Management Frameworks relevant to the application

No intersections with EMF areas found.

Environmental screening results and assessment outcomes

The following sections contain a summary of any development incentives, restrictions, exclusions or prohibitions that apply to the proposed development site as well as the most environmental sensitive features on the site based on the site sensitivity screening results for the application classification that was selected. The application classification selected for this report is:

¹ "development footprint", means the area within the site on which the development will take place and includes all ancillary developments for example roads, power lines, boundary walls, paving etc. which require vegetation clearance or which will be disturbed and for which the application has been submitted.

Relevant development incentives, restrictions, exclusions or prohibitions

The following development incentives, restrictions, exclusions or prohibitions and their implications that apply to this site are indicated below.

Incentive, restriction or prohibition	Implication
Strategic Gas Pipeline Corridors-Phase 3: Richards Bay to Gauteng	https://screening.environment.gov.za/ScreeningDownloads/DevelopmentZones/Combined_GAS.pdf

Proposed Development Area Environmental Sensitivity

The following summary of the development site environmental sensitivities is identified. Only the highest environmental sensitivity is indicated. The footprint environmental sensitivities for the proposed development footprint as identified, are indicative only and must be verified on site by a suitably qualified person before the specialist assessments identified below can be confirmed.

Theme	Very High sensitivity	High sensitivity	Medium sensitivity	Low sensitivity
Agriculture Theme		X		
Animal Species Theme		X		
Aquatic Biodiversity Theme	X			
Archaeological and Cultural Heritage Theme				X
Avian (Wind) Theme		X		
Bats (Wind) Theme		X		
Civil Aviation (Wind) Theme				X
Defence (Wind) Theme				X
Flicker Theme	X			
Landscape (Wind) Theme	X			
Paleontology Theme	X			
Noise Theme	X			
Plant Species Theme			X	
RFI (Wind) Theme				X
Terrestrial Biodiversity Theme	X			
Vulture Species Theme		X		

Specialist assessments identified

Based on the selected classification, and the known impacts associated with the proposed development, the following list of specialist assessments have been identified for inclusion in the assessment report. It is the responsibility of the EAP to confirm this list and to motivate in the assessment report, the reason for not including any of the identified specialist study including the provision of photographic evidence of the site situation.

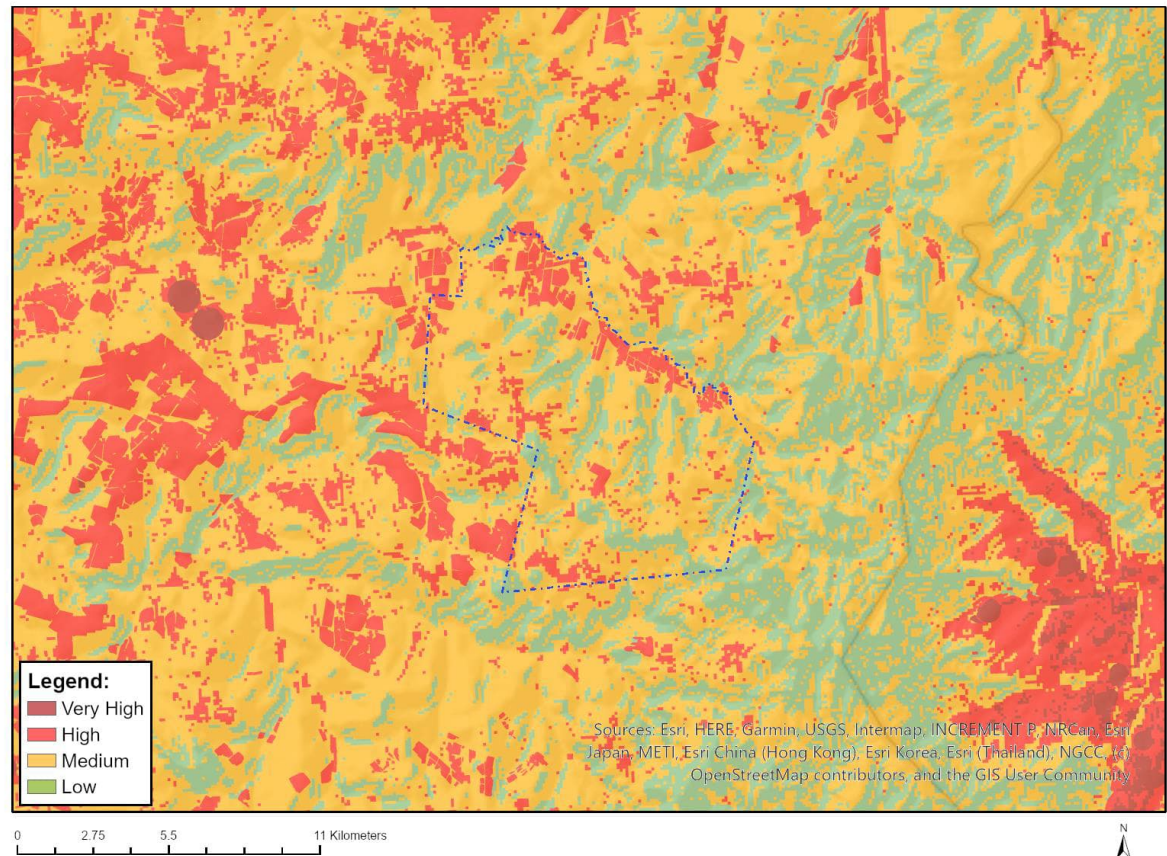
No	Specialist assessment	Assessment Protocol
1	Agricultural Impact Assessment	https://screening.environment.gov.za/ScreeningDownloads/AssessmentProtocols/Gazetted_WindAndSolar_Agriculture_Assessment

		nt Protocols.pdf
2	Landscape/Visual Impact Assessment	https://screening.environment.gov.za/ScreeningDownloads/AssessmentProtocols/Gazetted General Requirement Assessment Protocols.pdf
3	Archaeological and Cultural Heritage Impact Assessment	https://screening.environment.gov.za/ScreeningDownloads/AssessmentProtocols/Gazetted General Requirement Assessment Protocols.pdf
4	Palaeontology Impact Assessment	https://screening.environment.gov.za/ScreeningDownloads/AssessmentProtocols/Gazetted General Requirement Assessment Protocols.pdf
5	Terrestrial Biodiversity Impact Assessment	https://screening.environment.gov.za/ScreeningDownloads/AssessmentProtocols/Gazetted Terrestrial Biodiversity Assessment Protocols.pdf
6	Aquatic Biodiversity Impact Assessment	https://screening.environment.gov.za/ScreeningDownloads/AssessmentProtocols/Gazetted Aquatic Biodiversity Assessment Protocols.pdf
7	Avian Impact Assessment	https://screening.environment.gov.za/ScreeningDownloads/AssessmentProtocols/Gazetted Avifauna Assessment Protocols.pdf
8	Civil Aviation Assessment	https://screening.environment.gov.za/ScreeningDownloads/AssessmentProtocols/Gazetted Civil Aviation Installations Assessment Protocols.pdf
9	Defense Assessment	https://screening.environment.gov.za/ScreeningDownloads/AssessmentProtocols/Gazetted Defence Installations Assessment Protocols.pdf
10	RFI Assessment	https://screening.environment.gov.za/ScreeningDownloads/AssessmentProtocols/Gazetted General Requirement Assessment Protocols.pdf
11	Noise Impact Assessment	https://screening.environment.gov.za/ScreeningDownloads/AssessmentProtocols/Gazetted Noise Impacts Assessment Protocol.pdf
12	Flicker Assessment	https://screening.environment.gov.za/ScreeningDownloads/AssessmentProtocols/Gazetted General Requirement Assessment Protocols.pdf
13	Traffic Impact Assessment	https://screening.environment.gov.za/ScreeningDownloads/AssessmentProtocols/Gazetted General Requirement Assessment Protocols.pdf
14	Geotechnical Assessment	https://screening.environment.gov.za/ScreeningDownloads/AssessmentProtocols/Gazetted General Requirement Assessment Protocols.pdf
15	Socio-Economic Assessment	https://screening.environment.gov.za/ScreeningDownloads/AssessmentProtocols/Gazetted General Requirement Assessment Protocols.pdf
16	Plant Species Assessment	https://screening.environment.gov.za/ScreeningDownloads/AssessmentProtocols/Gazetted Plant Species Assessment Protocols.pdf
17	Animal Species Assessment	https://screening.environment.gov.za/ScreeningDownloads/AssessmentProtocols/Gazetted Animal Species Assessment Protocols.pdf

Results of the environmental sensitivity of the proposed area.

The following section represents the results of the screening for environmental sensitivity of the proposed site for relevant environmental themes associated with the project classification. It is the duty of the EAP to ensure that the environmental themes provided by the screening tool are comprehensive and complete for the project. Refer to the disclaimer.

MAP OF RELATIVE AGRICULTURE THEME SENSITIVITY

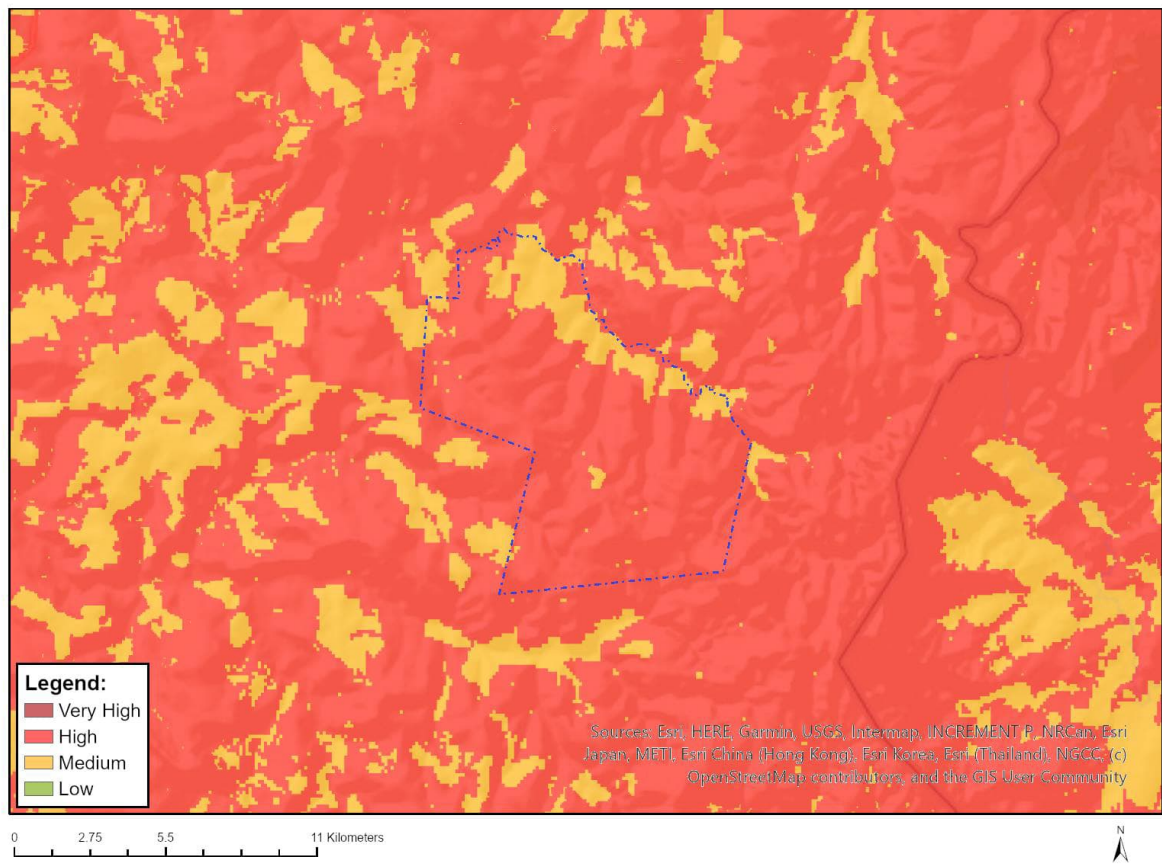


Very High sensitivity	High sensitivity	Medium sensitivity	Low sensitivity
	X		

Sensitivity Features:

Sensitivity	Feature(s)
High	Land capability;09. Moderate-High/10. Moderate-High
High	Annual Crop Cultivation / Planted Pastures Rotation;Land capability;09. Moderate-High/10. Moderate-High
High	Annual Crop Cultivation / Planted Pastures Rotation;Land capability;06. Low-Moderate/07. Low-Moderate/08. Moderate
High	Annual Crop Cultivation / Planted Pastures Rotation;Land capability;01. Very low/02. Very low/03. Low-Very low/04. Low-Very low/05. Low
Low	Land capability;01. Very low/02. Very low/03. Low-Very low/04. Low-Very low/05. Low
Medium	Land capability;06. Low-Moderate/07. Low-Moderate/08. Moderate

MAP OF RELATIVE ANIMAL SPECIES THEME SENSITIVITY



Where only a sensitive plant unique number or sensitive animal unique number is provided in the screening report and an assessment is required, the environmental assessment practitioner (EAP) or specialist is required to email SANBI at eiadatarequests@sanbi.org.za listing all sensitive species with their unique identifiers for which information is required. The name has been withheld as the species may be prone to illegal harvesting and must be protected. SANBI will release the actual species name after the details of the EAP or specialist have been documented.

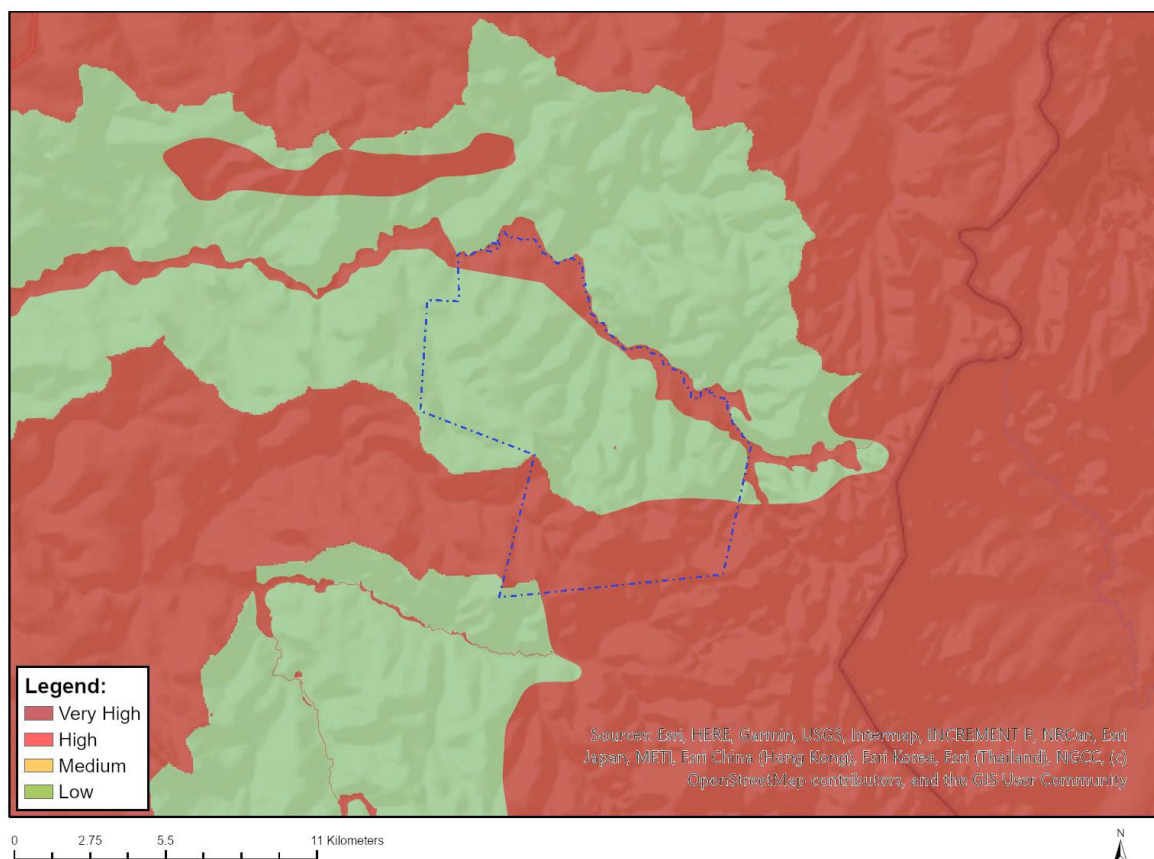
Very High sensitivity	High sensitivity	Medium sensitivity	Low sensitivity
	X		

Sensitivity Features:

Sensitivity	Feature(s)
High	Aves-Sagittarius serpentarius
High	Aves-Geronticus calvus
High	Aves-Neotis denhami
High	Aves-Balearica regulorum
High	Aves-Anthus chloris
High	Aves-Sylvia nigricapillus
High	Aves-Ciconia nigra
High	Aves-Falco biarmicus
High	Aves-Eupodotis senegalensis
Medium	Aves-Sagittarius serpentarius
Medium	Aves-Sylvia nigricapillus
Medium	Aves-Spizocorys fringillaris
Medium	Aves-Ciconia nigra

Medium	Aves-Neotis denhami
Medium	Aves-Balearica regulorum
Medium	Aves-Heteromirafra ruddi
Medium	Aves-Eupodotis senegalensis
Medium	Sensitive species 23
Medium	Aves-Anthus chloris
Medium	Aves-Tyto capensis
Medium	Mammalia-Hydricitis maculicollis
Medium	Mammalia-Ourebia ourebi ourebi
Medium	Invertebrate-Clonia lalandei

MAP OF RELATIVE AQUATIC BIODIVERSITY THEME SENSITIVITY



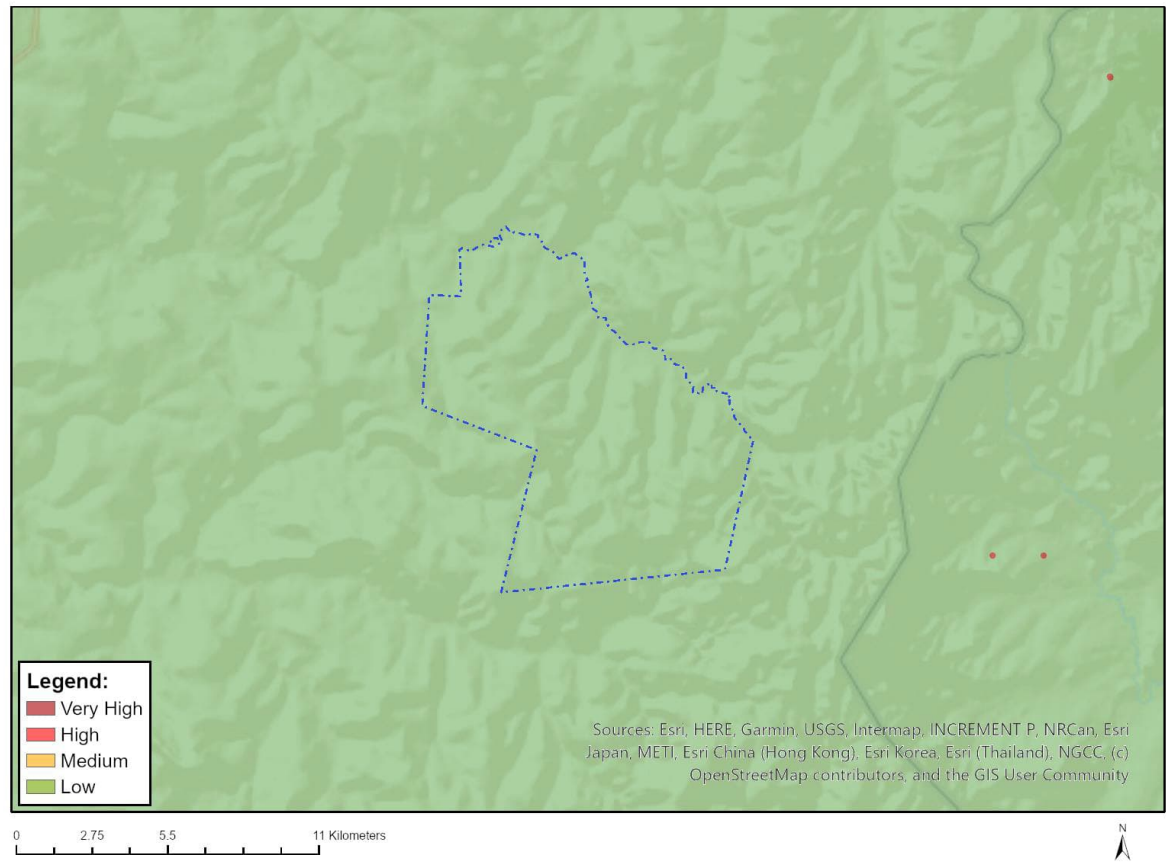
Very High sensitivity	High sensitivity	Medium sensitivity	Low sensitivity
X			

Sensitivity Features:

Sensitivity	Feature(s)
Low	Low sensitivity
Very High	FEPA Subcatchment
Very High	Rivers_AB
Very High	SWSA (SW) _Northern Drakensberg
Very High	Wetlands _Mesic Highveld Grassland Bioregion (Depression)
Very High	Wetlands _Mesic Highveld Grassland Bioregion (Floodplain)
Very High	Wetlands _Mesic Highveld Grassland Bioregion (Seep)

Very High	Wetlands_Mesic Highveld Grassland Bioregion (Valley-bottom)
-----------	---

MAP OF RELATIVE ARCHAEOLOGICAL AND CULTURAL HERITAGE THEME SENSITIVITY

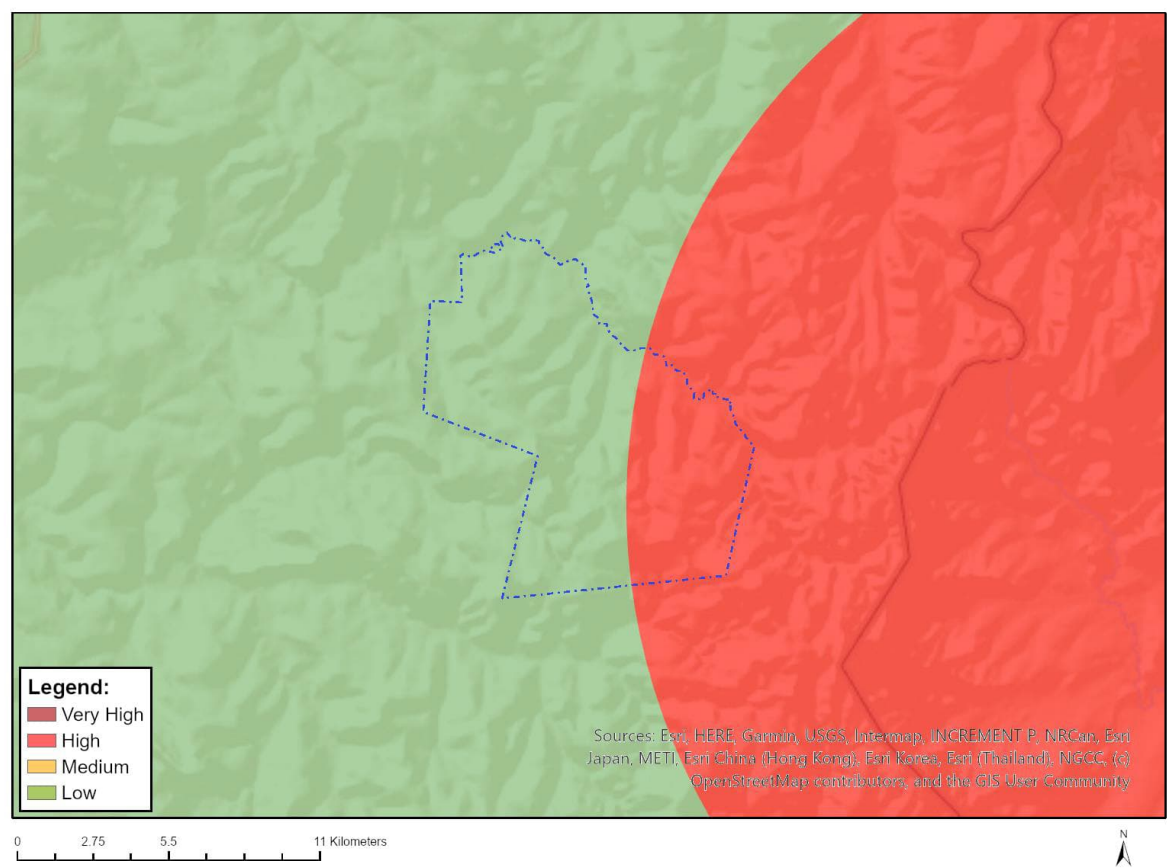


Very High sensitivity	High sensitivity	Medium sensitivity	Low sensitivity
			X

Sensitivity Features:

Sensitivity	Feature(s)
Low	Low sensitivity

MAP OF RELATIVE AVIAN (WIND) THEME SENSITIVITY

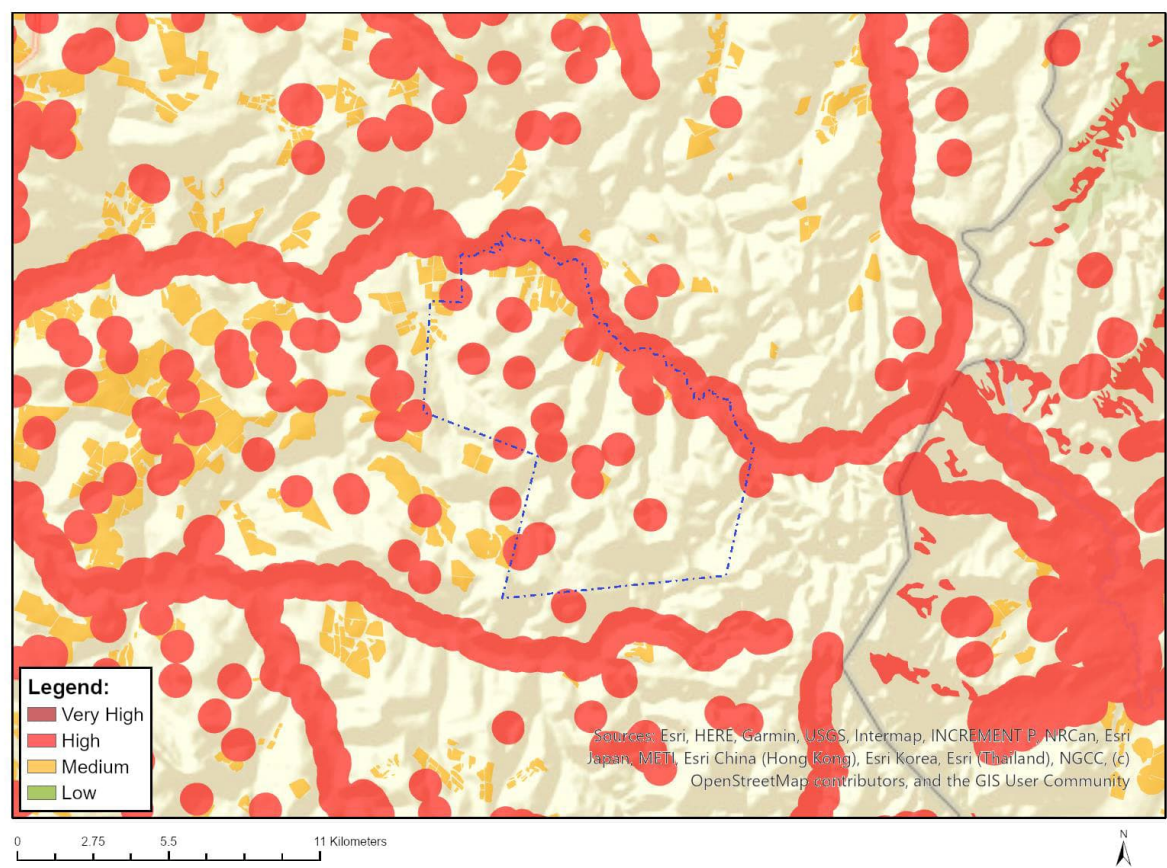


Very High sensitivity	High sensitivity	Medium sensitivity	Low sensitivity
	X		

Sensitivity Features:

Sensitivity	Feature(s)
High	within 20 km of known Cape Vulturerestuarants sites
Low	Area Outside Sensitivities

MAP OF RELATIVE BATS (WIND) THEME SENSITIVITY

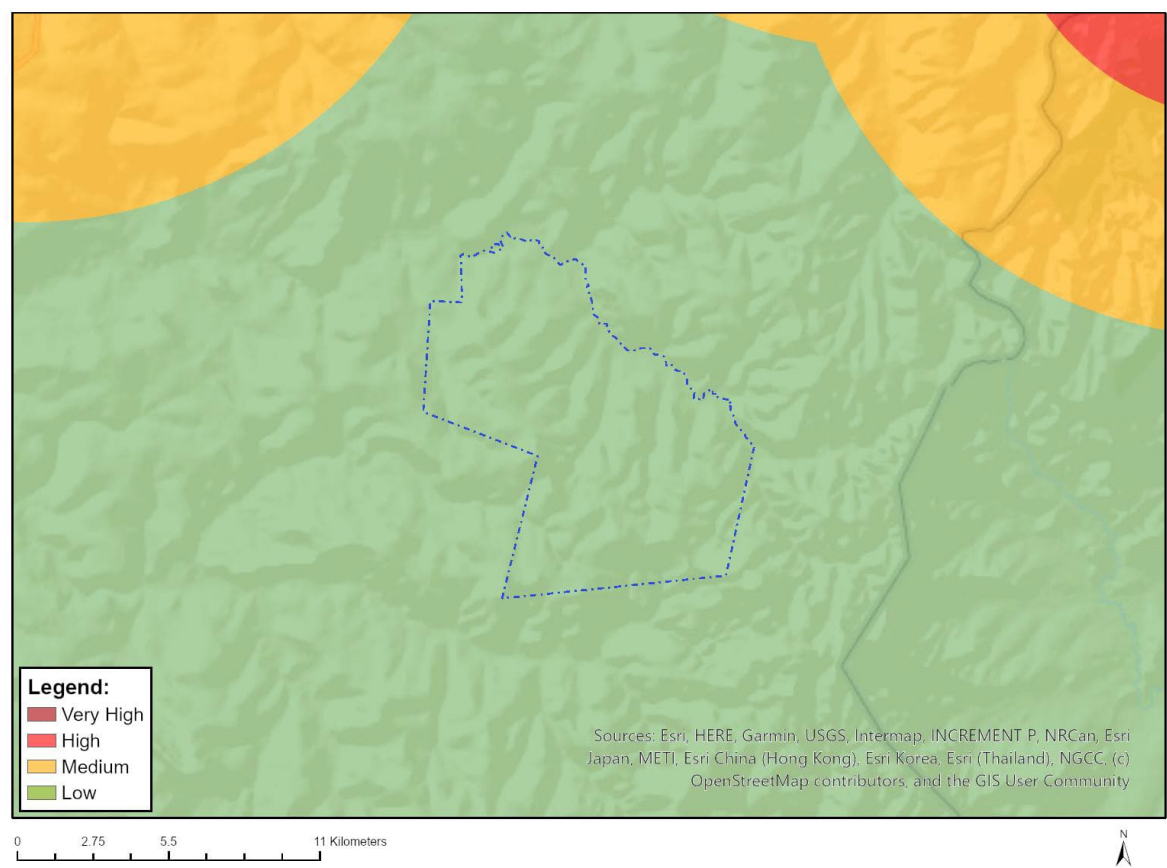


Very High sensitivity	High sensitivity	Medium sensitivity	Low sensitivity
	X		

Sensitivity Features:

Sensitivity	Feature(s)
High	Within 500 m of a river
High	Wetland
High	Within 500 m of a wetland
Medium	Croplands

MAP OF RELATIVE CIVIL AVIATION (WIND) THEME SENSITIVITY

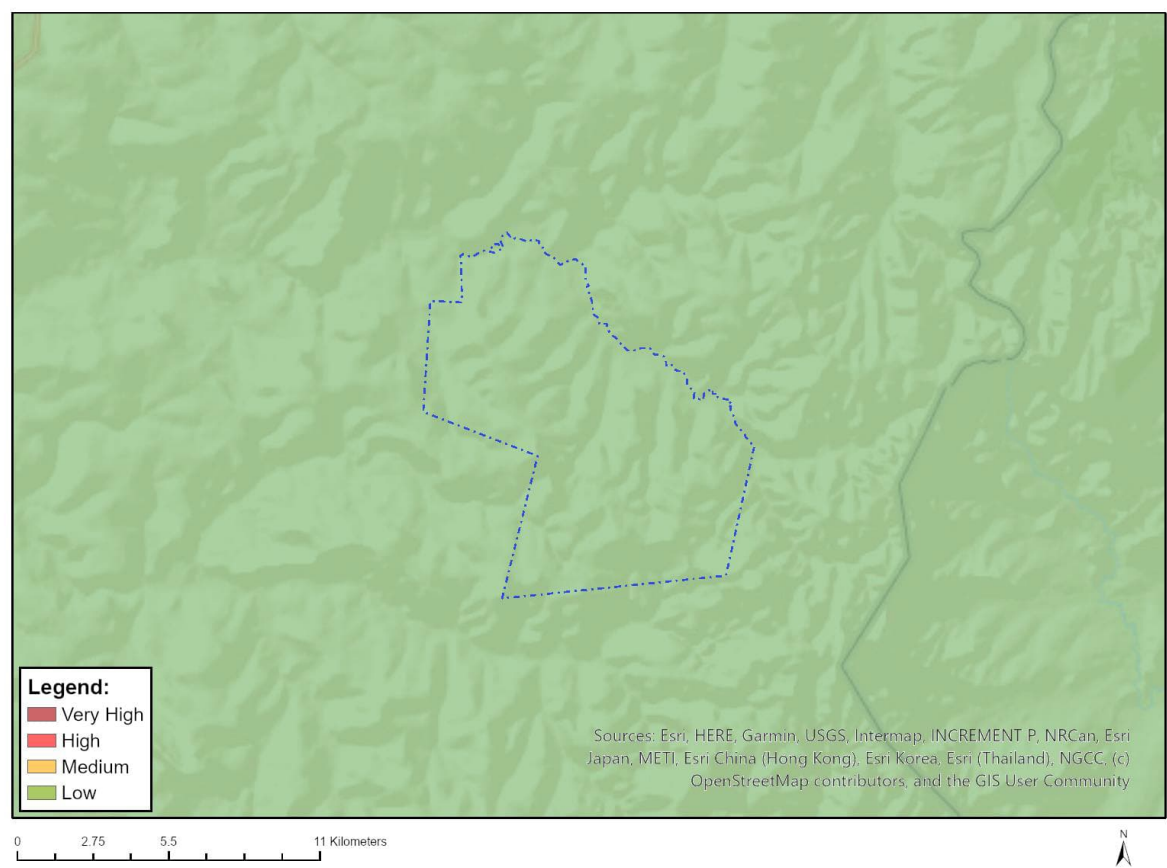


Very High sensitivity	High sensitivity	Medium sensitivity	Low sensitivity
			X

Sensitivity Features:

Sensitivity	Feature(s)
Low	Low sensitivity

MAP OF RELATIVE DEFENCE (WIND) THEME SENSITIVITY

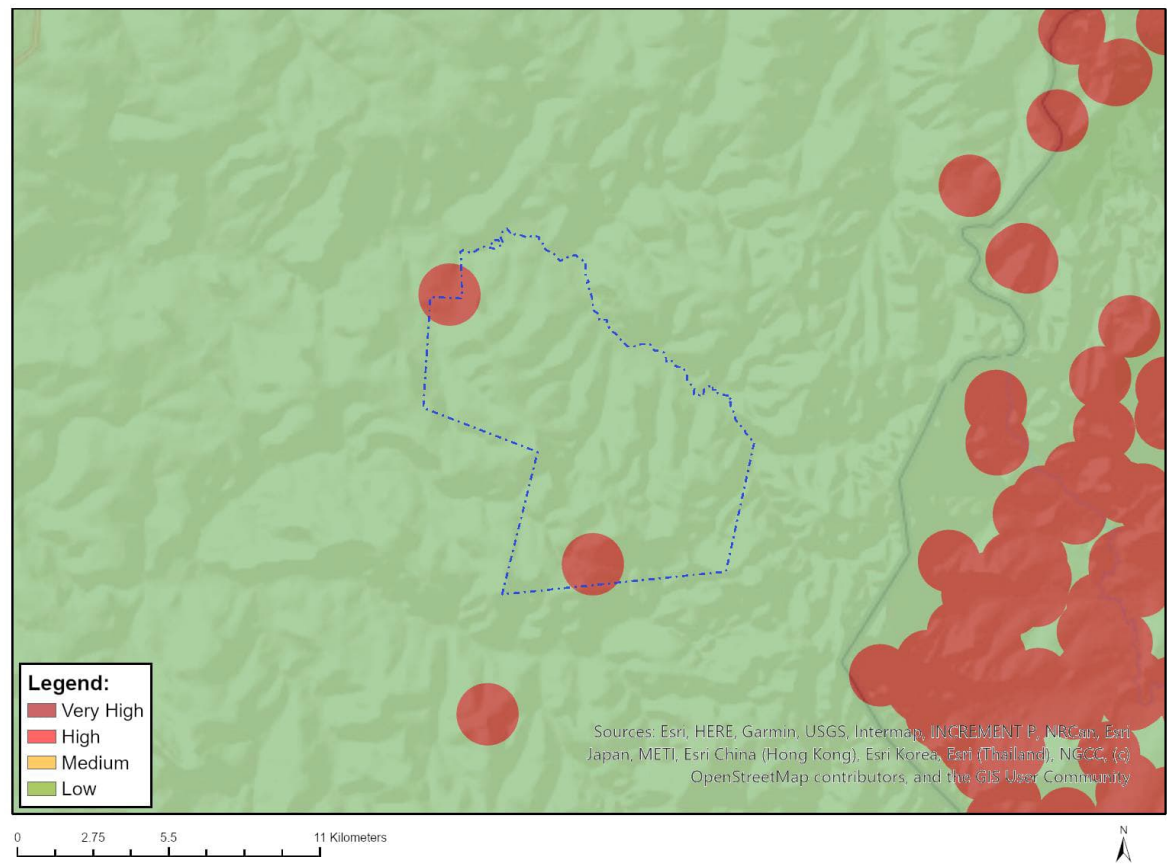


Very High sensitivity	High sensitivity	Medium sensitivity	Low sensitivity
			X

Sensitivity Features:

Sensitivity	Feature(s)
Low	Low sensitivity

MAP OF RELATIVE FLICKER THEME SENSITIVITY

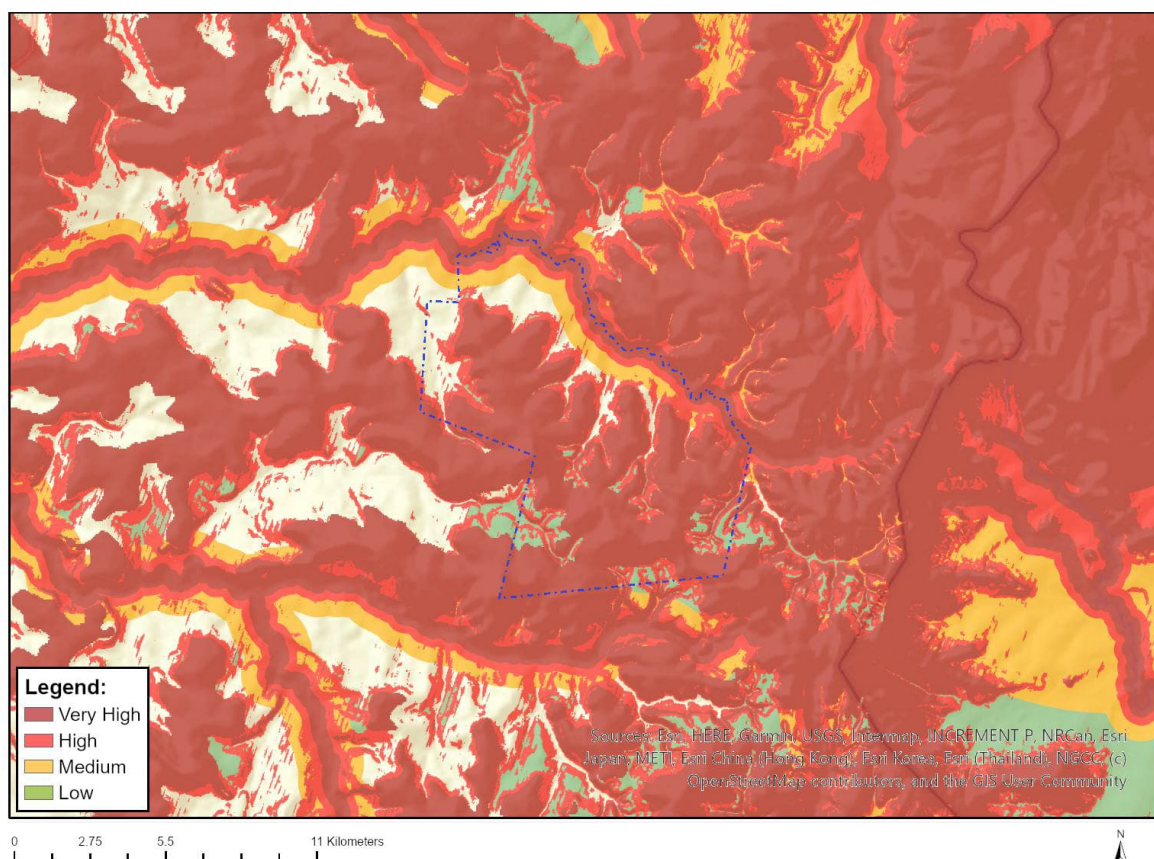


Very High sensitivity	High sensitivity	Medium sensitivity	Low sensitivity
X			

Sensitivity Features:

Sensitivity	Feature(s)
Low	Area of low sensitivity
Very High	Potential temporarily or permanently inhabited residence

MAP OF RELATIVE LANDSCAPE (WIND) THEME SENSITIVITY

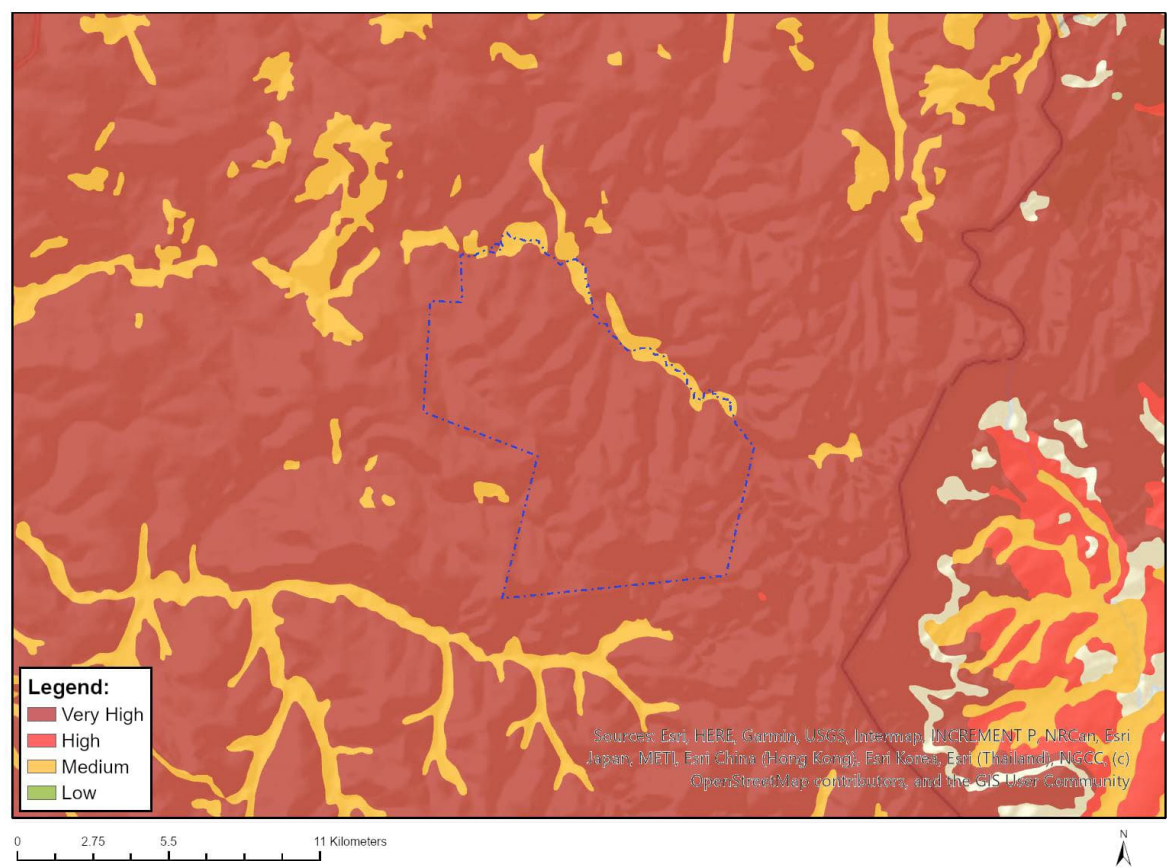


Very High sensitivity	High sensitivity	Medium sensitivity	Low sensitivity
X			

Sensitivity Features:

Sensitivity	Feature(s)
High	Slope between 1:4 and 1:10
High	Within 500 m of a river
Low	Slope less than 1:10
Medium	Between 5 and 10 km of a nature reserve, botanical garden or other protected area
Medium	Within 1000 m of a wetland
Very High	Mountain tops and high ridges
Very High	Slope more than 1:4
Very High	Within 250 m of a river

MAP OF RELATIVE PALEONTOLOGY THEME SENSITIVITY

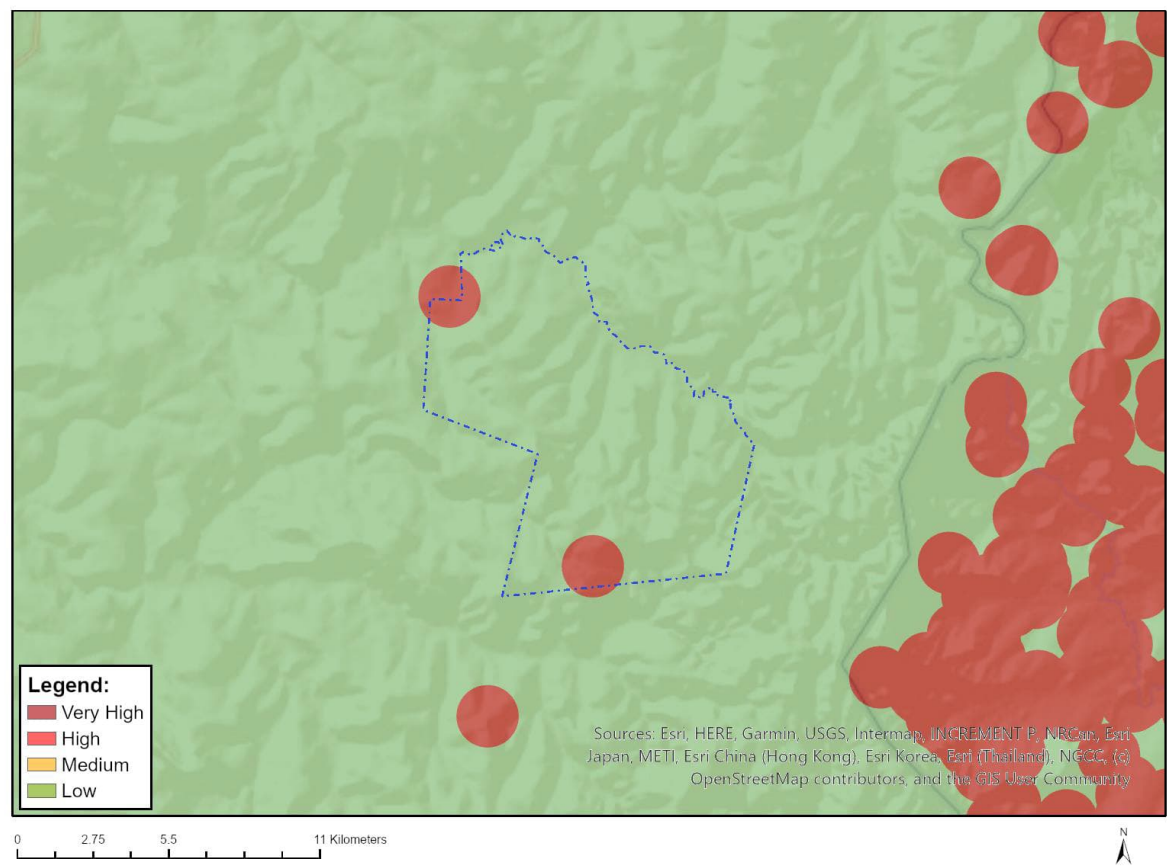


Very High sensitivity	High sensitivity	Medium sensitivity	Low sensitivity
X			

Sensitivity Features:

Sensitivity	Feature(s)
Medium	Features with a Medium paleontological sensitivity
Very High	Features with a Very High paleontological sensitivity

MAP OF RELATIVE NOISE THEME SENSITIVITY

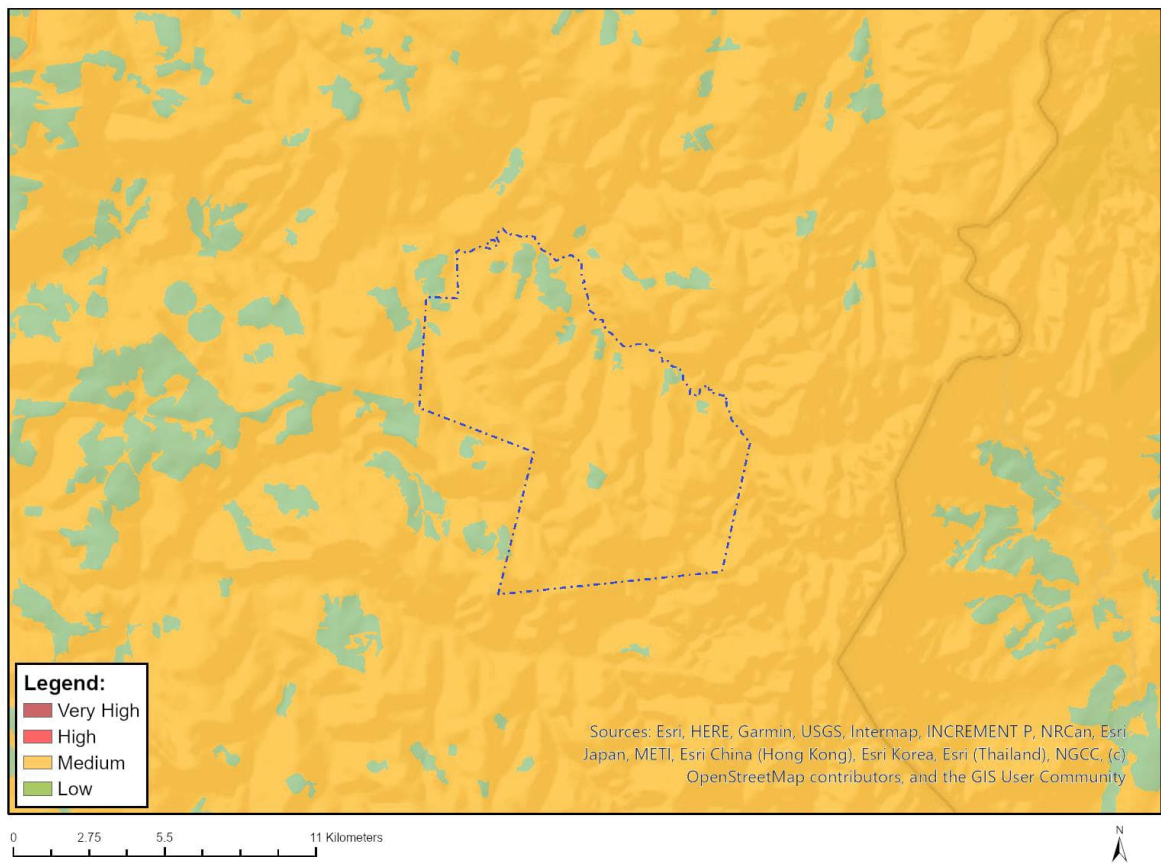


Very High sensitivity	High sensitivity	Medium sensitivity	Low sensitivity
X			

Sensitivity Features:

Sensitivity	Feature(s)
Low	Area of low sensitivity
Very High	Potential temporarily or permanently inhabited residence

MAP OF RELATIVE PLANT SPECIES THEME SENSITIVITY



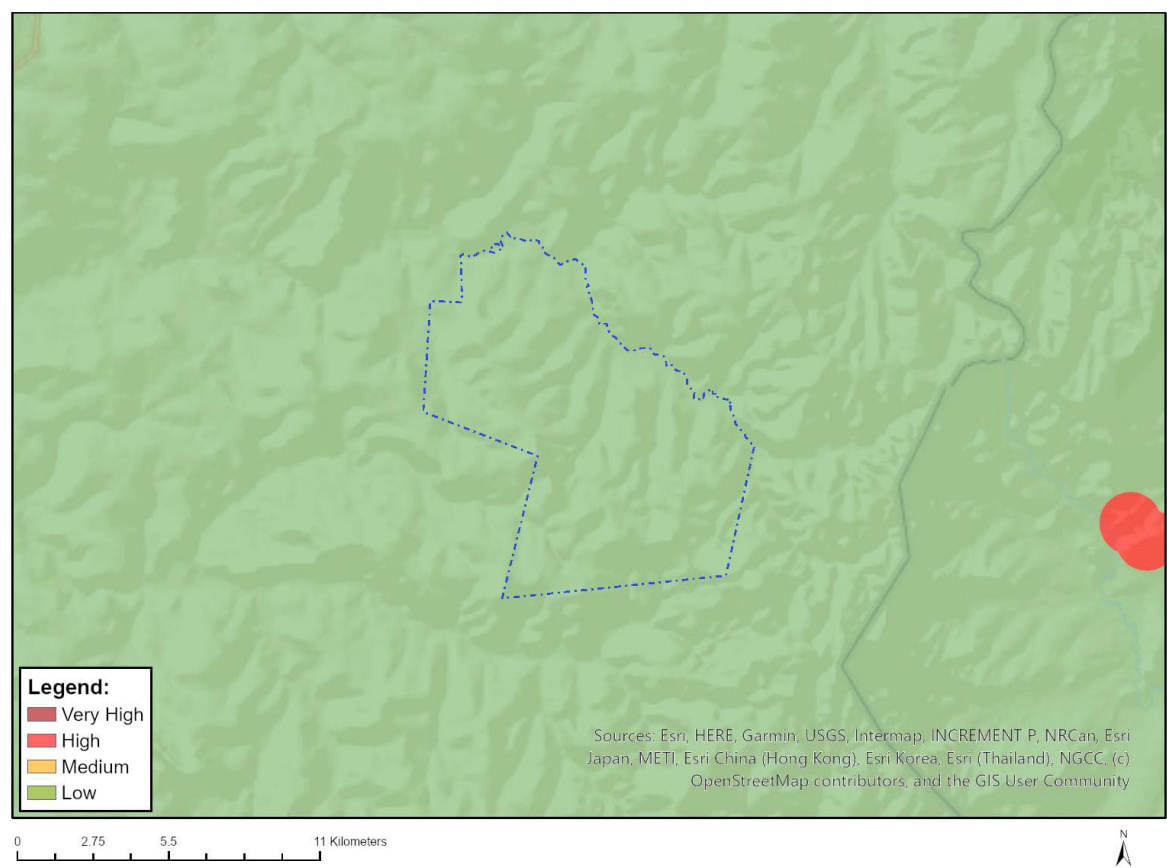
Where only a sensitive plant unique number or sensitive animal unique number is provided in the screening report and an assessment is required, the environmental assessment practitioner (EAP) or specialist is required to email SANBI at eiadatarequests@sanbi.org.za listing all sensitive species with their unique identifiers for which information is required. The name has been withheld as the species may be prone to illegal harvesting and must be protected. SANBI will release the actual species name after the details of the EAP or specialist have been documented.

Very High sensitivity	High sensitivity	Medium sensitivity	Low sensitivity
		X	

Sensitivity Features:

Sensitivity	Feature(s)
Low	Low Sensitivity
Medium	Sensitive species 1252
Medium	Sensitive species 998

MAP OF RELATIVE RFI (WIND) THEME SENSITIVITY

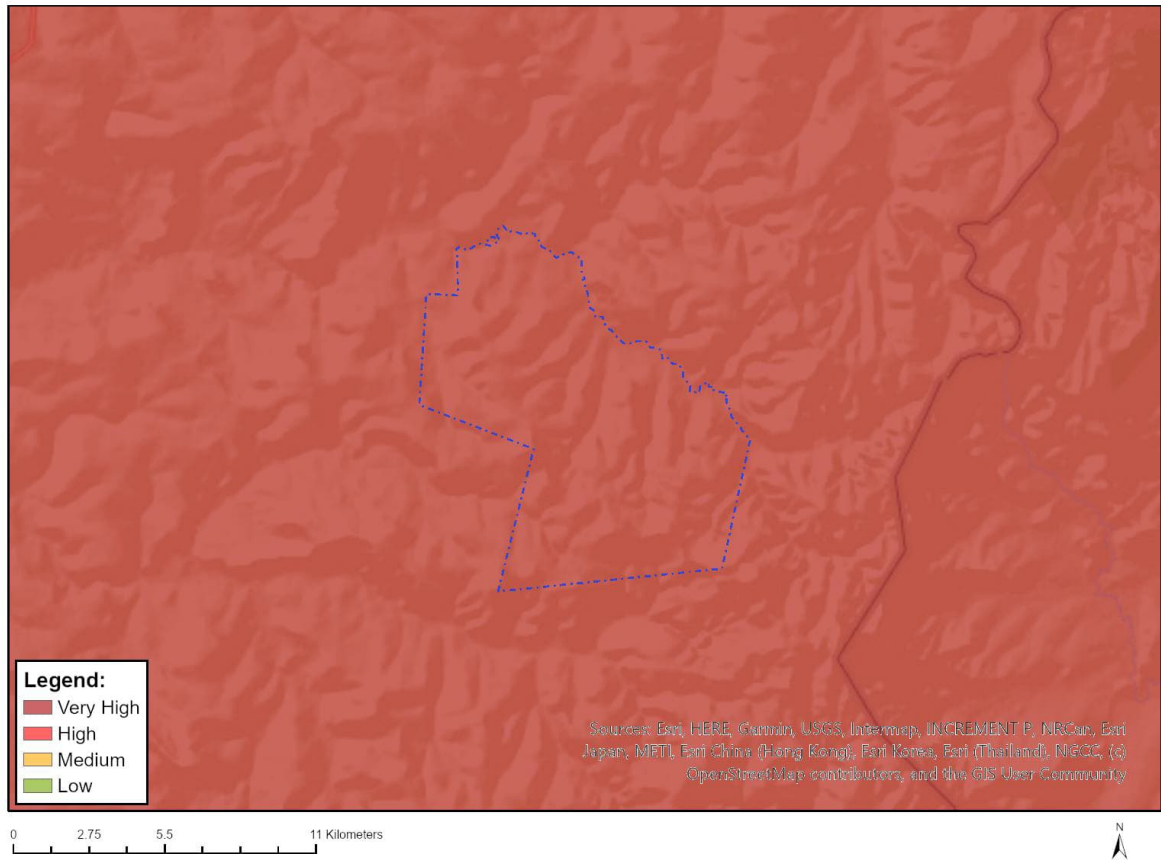


Very High sensitivity	High sensitivity	Medium sensitivity	Low sensitivity
			X

Sensitivity Features:

Sensitivity	Feature(s)
Low	Low sensitivity for telecommunications;None;More than 60 km from a Weather Radar installation

MAP OF RELATIVE TERRESTRIAL BIODIVERSITY THEME SENSITIVITY

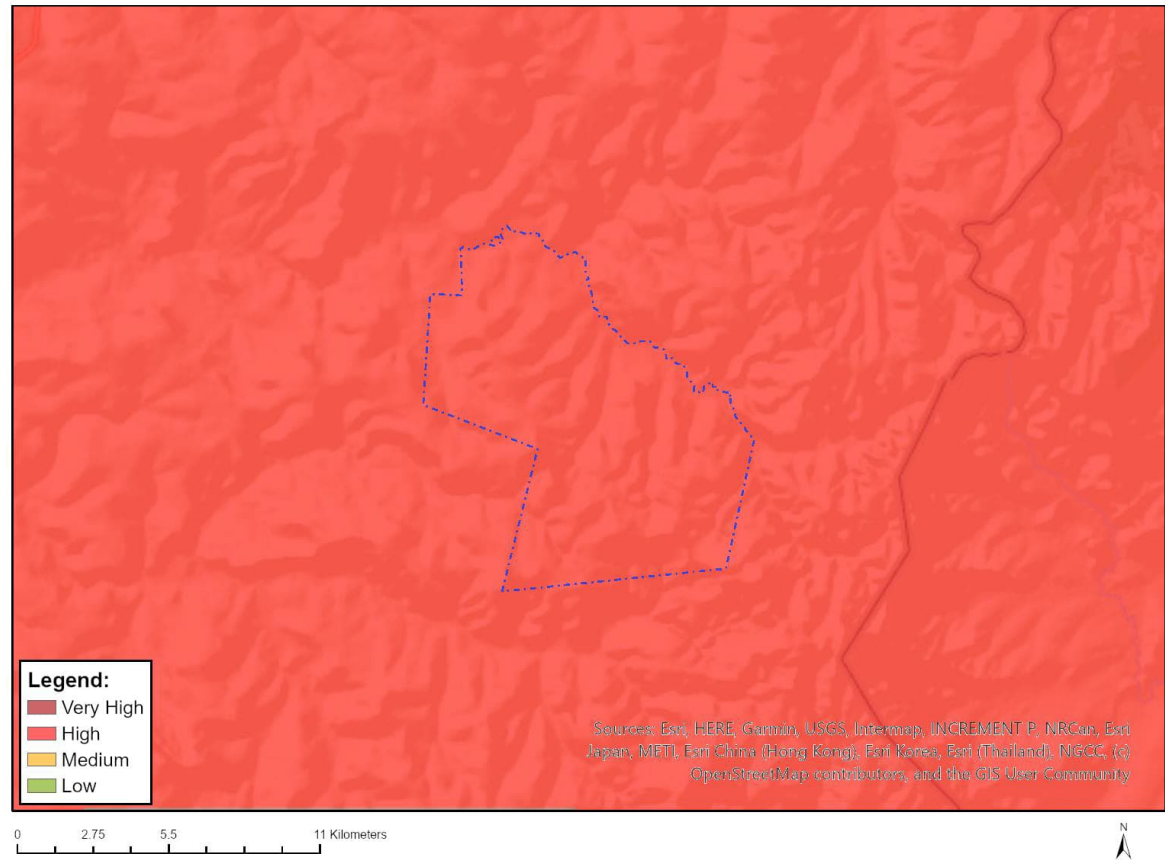


Very High sensitivity	High sensitivity	Medium sensitivity	Low sensitivity
X			

Sensitivity Features:

Sensitivity	Feature(s)
Very High	CBA 1
Very High	CBA 2
Very High	ESA 1
Very High	ESA 2
Very High	FEPA Subcatchment
Very High	SWSA (SW) _Northern Drakensberg
Very High	National Protected Area Expansion Strategy (NPAES)

MAP OF RELATIVE VULTURE SPECIES THEME SENSITIVITY



Very High sensitivity	High sensitivity	Medium sensitivity	Low sensitivity
	X		

Sensitivity Features:

Sensitivity	Feature(s)
High	affecting an area between 10% - 20% of the population