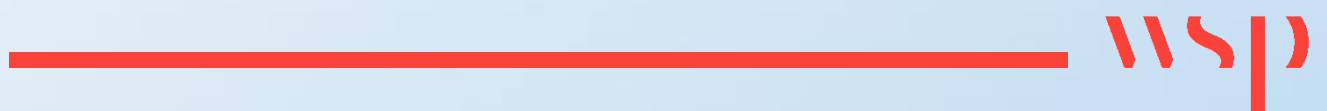


# Appendix E

## **DFFE SCREENING TOOL REPORT**



**SCREENING REPORT FOR AN ENVIRONMENTAL AUTHORIZATION AS  
REQUIRED BY THE 2014 EIA REGULATIONS – PROPOSED SITE  
ENVIRONMENTAL SENSITIVITY**

**EIA Reference number:** TBC

**Project name:** Verkykerskop WEF Cluster

**Project title:** Verkykerskop WEF Cluster - Normadien

**Date screening report generated:** 30/09/2024 12:47:17

**Applicant:** Mulilo Renewable Project Developments

**Compiler:** WSP Group Africa

**Compiler signature:**



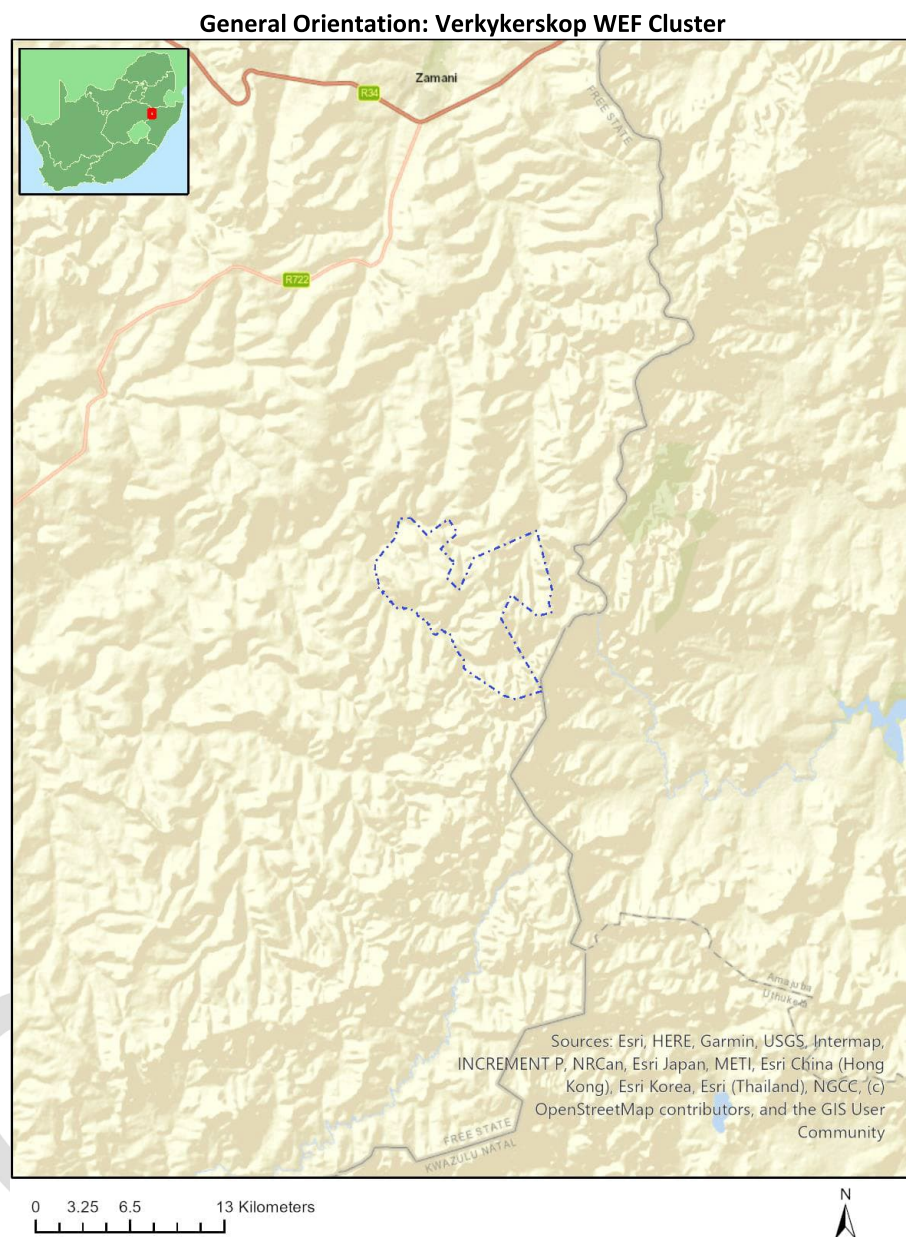
**Application Category:** Utilities Infrastructure | Electricity | Generation | Renewable | Wind

## Table of Contents

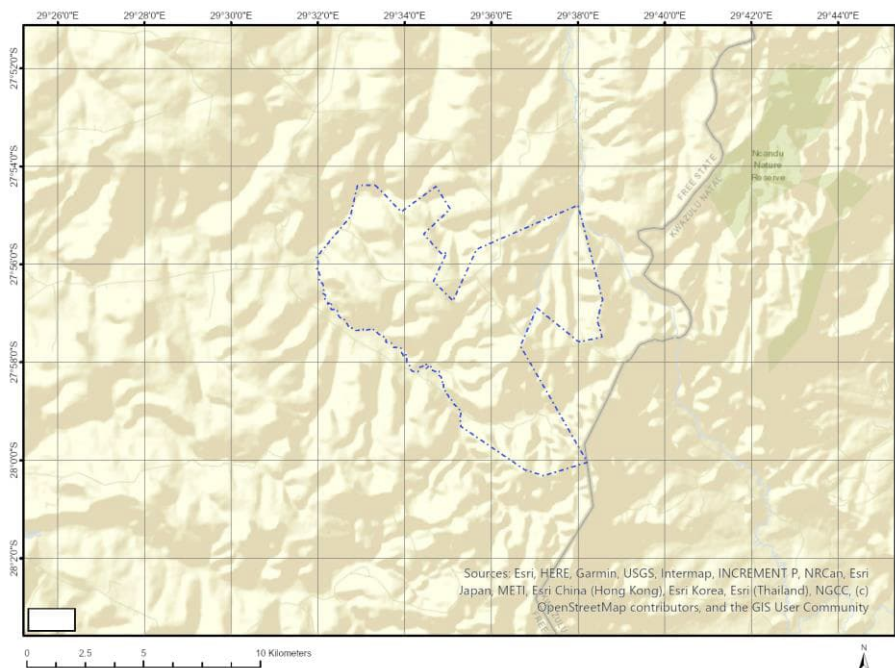
Proposed Project Location .....	3
Orientation map 1: General location .....	3
Map of proposed site and relevant area(s) .....	4
Cadastral details of the proposed site .....	4
Wind and Solar developments with an approved Environmental Authorisation or applications under consideration within 30 km of the proposed area .....	5
Environmental Management Frameworks relevant to the application .....	6
Environmental screening results and assessment outcomes .....	6
Relevant development incentives, restrictions, exclusions or prohibitions .....	6
Proposed Development Area Environmental Sensitivity .....	6
Specialist assessments identified .....	7
Results of the environmental sensitivity of the proposed area .....	9
MAP OF RELATIVE AGRICULTURE THEME SENSITIVITY .....	9
MAP OF RELATIVE ANIMAL SPECIES THEME SENSITIVITY .....	10
MAP OF RELATIVE AQUATIC BIODIVERSITY THEME SENSITIVITY .....	11
MAP OF RELATIVE ARCHAEOLOGICAL AND CULTURAL HERITAGE THEME SENSITIVITY .....	12
MAP OF RELATIVE AVIAN (WIND) THEME SENSITIVITY .....	13
MAP OF RELATIVE BATS (WIND) THEME SENSITIVITY .....	14
MAP OF RELATIVE CIVIL AVIATION (WIND) THEME SENSITIVITY .....	15
MAP OF RELATIVE DEFENCE (WIND) THEME SENSITIVITY .....	16
MAP OF RELATIVE FLICKER THEME SENSITIVITY .....	17
MAP OF RELATIVE LANDSCAPE (WIND) THEME SENSITIVITY .....	18
MAP OF RELATIVE PALEONTOLOGY THEME SENSITIVITY .....	19
MAP OF RELATIVE NOISE THEME SENSITIVITY .....	20
MAP OF RELATIVE PLANT SPECIES THEME SENSITIVITY .....	21
MAP OF RELATIVE RFI (WIND) THEME SENSITIVITY .....	22
MAP OF RELATIVE TERRESTRIAL BIODIVERSITY THEME SENSITIVITY .....	23
MAP OF RELATIVE VULTURE SPECIES THEME SENSITIVITY .....	24

# Proposed Project Location

## Orientation map 1: General location



# Map of proposed site and relevant area(s)



## Cadastral details of the proposed site

Property details:

No	Farm Name	Farm/ Erf No	Portion	Latitude	Longitude	Property Type
1	WELGELUKT	1416	0	27°55'36.33S	29°37'20.5E	Farm
2	GROOT POORT	647	0	27°55'57.51S	29°38'40.11E	Farm
3	KRUGERS WENS	1062	0	27°55'22.27S	29°33'28.78E	Farm
4	JOHANNA	1395	0	27°56'47.3S	29°34'0.44E	Farm
5	DRIEKOPPEN	485	0	27°56'48.49S	29°35'48.99E	Farm
6	CHRISTINA	90	0	27°55'58.86S	29°32'27E	Farm
7	SCOTLAND	1238	0	27°58'48.91S	29°36'58.56E	Farm
8	JOHANNA	1114	0	27°54'42.23S	29°32'33.94E	Farm
9	AANFIELD	253	0	27°59'29.36S	29°34'21.89E	Farm
10	NAAUW KLOOF	4	0	27°57'26.18S	29°31'14.76E	Farm
11	LUDWIGSBURG	1316	0	28°1'19.54S	29°37'25.47E	Farm
12	GOEDGEDACHT	724	0	27°57'15.4S	29°37'56.87E	Farm
13	OX HOEK	98	0	27°58'38.38S	29°32'35.06E	Farm
14	ROOI KOPPEN	600	0	27°58'19.43S	29°35'53.49E	Farm
15	BULL HOEK	329	0	27°57'40.23S	29°34'48.93E	Farm
16	FREDERIKASDEEL	1575	0	27°54'22.96S	29°37'48E	Farm
17	BRAK KRANS	554	0	27°56'35.81S	29°33'5.44E	Farm
18	GOEDE HOOP	982	0	27°54'22.36S	29°33'58.95E	Farm
19	MOLEN RIVIERS OORSPRONG	612	0	27°58'17.24S	29°37'47.18E	Farm
20	INZICHT	1428	0	27°56'27.34S	29°37'19.78E	Farm
21	MOOIPLAATS	391	0	27°59'34.7S	29°36'37.21E	Farm
22	ZUURVELDT	728	0	27°57'12.53S	29°39'4.58E	Farm
23	PELAAN	1315	0	28°0'44.72S	29°35'57.36E	Farm
24	NOOITGEDACHT	1573	0	27°54'6.95S	29°34'54.83E	Farm
25	WINKELS HOEK	1063	0	27°55'17.63S	29°31'58.3E	Farm
26	BRANDWACHT	1801	0	27°54'38.86S	29°39'15.68E	Farm

27	ZUURVELDT	728	0	27°57'13.43S	29°39'3.49E	Farm Portion
28	CHRISTINA	90	0	27°55'58.86S	29°32'27E	Farm Portion
29	NAAUW KLOOF	4	0	27°57'26.18S	29°31'14.76E	Farm Portion
30	OX HOEK	98	0	27°59'11.8S	29°33'15.14E	Farm Portion
31	AANFIELD	253	0	27°59'42.81S	29°34'42E	Farm Portion
32	AANFIELD	253	1	27°59'15.69S	29°34'1.47E	Farm Portion
33	BULL HOEK	329	1	27°56'57.3S	29°34'43.22E	Farm Portion
34	JOHANNA	1114	0	27°54'42.23S	29°32'33.94E	Farm Portion
35	BRAK KRANS	554	0	27°56'35.81S	29°33'5.44E	Farm Portion
36	GOEDGEDACHT	724	0	27°57'15.4S	29°37'56.87E	Farm Portion
37	OX HOEK	98	1	27°57'52.87S	29°31'52.86E	Farm Portion
38	OX HOEK	98	3	27°58'16.06S	29°32'39.14E	Farm Portion
39	WINKELS HOEK	1063	0	27°55'17.53S	29°31'58.29E	Farm Portion
40	WINKELS HOEK	1063	1	27°55'46.15S	29°32'0.09E	Farm Portion
41	GROOT POORT	647	0	27°55'57.51S	29°38'40.11E	Farm Portion
42	DRIEKOPPEN	485	0	27°57'1.36S	29°35'31.98E	Farm Portion
43	DRIEKOPPEN	485	1	27°56'8.36S	29°35'8.93E	Farm Portion
44	DRIEKOPPEN	485	2	27°56'20.9S	29°35'42.18E	Farm Portion
45	DRIEKOPPEN	485	3	27°56'53.37S	29°36'34.4E	Farm Portion
46	DRIEKOPPEN	485	4	27°57'28.35S	29°36'4.22E	Farm Portion
47	DRIEKOPPEN	485	5	27°57'13.65S	29°36'25.19E	Farm Portion
48	GOEDE HOOP	982	0	27°53'58.94S	29°33'35.36E	Farm Portion
49	GOEDE HOOP	982	1	27°54'54.15S	29°34'31.04E	Farm Portion
50	GOEDE HOOP	982	2	27°55'24.21S	29°35'1.19E	Farm Portion
51	BULL HOEK	329	0	27°57'55.67S	29°34'50.99E	Farm Portion
52	ROOI KOPPEN	600	0	27°58'19.43S	29°35'53.49E	Farm Portion
53	JOHANNA	1395	0	27°56'45.16S	29°34'9.93E	Farm Portion
54	JOHANNA	1395	1	27°56'51.59S	29°33'41.4E	Farm Portion
55	MOOIPLAATS	391	0	27°59'34.7S	29°36'37.21E	Farm Portion
56	MOLEN RIVIERS OORSPRONG	612	0	27°58'47.07S	29°38'10.77E	Farm Portion
57	MOLEN RIVIERS OORSPRONG	612	1	27°57'51.55S	29°37'26.88E	Farm Portion
58	WELGELUKT	1416	0	27°55'36.33S	29°37'20.5E	Farm Portion
59	KRUGERS WENS	1062	0	27°55'22.27S	29°33'28.78E	Farm Portion
60	INZICHT	1428	0	27°56'27.34S	29°37'19.78E	Farm Portion
61	BRANDWACHT	1801	0	27°54'38.86S	29°39'15.68E	Farm Portion
62	NOOITGEDACHT	1573	0	27°54'6.95S	29°34'54.83E	Farm Portion
63	FREDERIKASDEEL	1575	0	27°54'22.96S	29°37'48E	Farm Portion
64	PELAAN	1315	0	28°0'44.72S	29°35'57.36E	Farm Portion
65	LUDWIGSBURG	1316	0	28°1'19.54S	29°37'25.47E	Farm Portion
66	SCOTLAND	1238	0	27°58'48.91S	29°36'58.56E	Farm Portion

Development footprint<sup>1</sup> vertices:  
No development footprint(s) specified.

## Wind and Solar developments with an approved Environmental Authorisation or applications under consideration within 30 km of the proposed area

No nearby wind or solar developments found.

<sup>1</sup> “development footprint”, means the area within the site on which the development will take place and includes all ancillary developments for example roads, power lines, boundary walls, paving etc. which require vegetation clearance or which will be disturbed and for which the application has been submitted.



## Environmental Management Frameworks relevant to the application

No intersections with EMF areas found.

## Environmental screening results and assessment outcomes

The following sections contain a summary of any development incentives, restrictions, exclusions or prohibitions that apply to the proposed development site as well as the most environmental sensitive features on the site based on the site sensitivity screening results for the application classification that was selected. The application classification selected for this report is:

**Utilities Infrastructure | Electricity | Generation | Renewable | Wind.**

### Relevant development incentives, restrictions, exclusions or prohibitions

The following development incentives, restrictions, exclusions or prohibitions and their implications that apply to this site are indicated below.

Incentive, restriction or prohibition	Implication
Strategic Gas Pipeline Corridors-Phase 3: Richards Bay to Gauteng	<a href="https://screening.environment.gov.za/ScreeningDownloads/DevelopmentZones/Combined_GAS.pdf">https://screening.environment.gov.za/ScreeningDownloads/DevelopmentZones/Combined_GAS.pdf</a>

### Proposed Development Area Environmental Sensitivity

The following summary of the development site environmental sensitivities is identified. Only the highest environmental sensitivity is indicated. The footprint environmental sensitivities for the proposed development footprint as identified, are indicative only and must be verified on site by a suitably qualified person before the specialist assessments identified below can be confirmed.

Theme	Very High sensitivity	High sensitivity	Medium sensitivity	Low sensitivity
Agriculture Theme		X		
Animal Species Theme		X		
Aquatic Biodiversity Theme	X			
Archaeological and Cultural Heritage Theme				X
Avian (Wind) Theme		X		
Bats (Wind) Theme		X		
Civil Aviation (Wind) Theme				X
Defence (Wind) Theme				X
Flicker Theme				X
Landscape (Wind) Theme	X			
Paleontology Theme	X			
Noise Theme				X
Plant Species Theme			X	
RFI (Wind) Theme				X
Terrestrial Biodiversity Theme	X			
Vulture Species Theme		X		

## Specialist assessments identified

Based on the selected classification, and the known impacts associated with the proposed development, the following list of specialist assessments have been identified for inclusion in the assessment report. It is the responsibility of the EAP to confirm this list and to motivate in the assessment report, the reason for not including any of the identified specialist study including the provision of photographic evidence of the site situation.

No	Specialist assessment	Assessment Protocol
1	Agricultural Impact Assessment	<a href="https://screening.environment.gov.za/ScreeningDownloads/AssessmentProtocols/Gazetted_WindAndSolar_Agriculture_Assessment_Protocols.pdf">https://screening.environment.gov.za/ScreeningDownloads/AssessmentProtocols/Gazetted_WindAndSolar_Agriculture_Assessment_Protocols.pdf</a>
2	Landscape/Visual Impact Assessment	<a href="https://screening.environment.gov.za/ScreeningDownloads/AssessmentProtocols/Gazetted_General_Requirement_Assessment_Protocols.pdf">https://screening.environment.gov.za/ScreeningDownloads/AssessmentProtocols/Gazetted_General_Requirement_Assessment_Protocols.pdf</a>
3	Archaeological and Cultural Heritage Impact Assessment	<a href="https://screening.environment.gov.za/ScreeningDownloads/AssessmentProtocols/Gazetted_General_Requirement_Assessment_Protocols.pdf">https://screening.environment.gov.za/ScreeningDownloads/AssessmentProtocols/Gazetted_General_Requirement_Assessment_Protocols.pdf</a>
4	Palaeontology Impact Assessment	<a href="https://screening.environment.gov.za/ScreeningDownloads/AssessmentProtocols/Gazetted_General_Requirement_Assessment_Protocols.pdf">https://screening.environment.gov.za/ScreeningDownloads/AssessmentProtocols/Gazetted_General_Requirement_Assessment_Protocols.pdf</a>
5	Terrestrial Biodiversity Impact Assessment	<a href="https://screening.environment.gov.za/ScreeningDownloads/AssessmentProtocols/Gazetted_Terrestrial_Biodiversity_Assessment_Protocols.pdf">https://screening.environment.gov.za/ScreeningDownloads/AssessmentProtocols/Gazetted_Terrestrial_Biodiversity_Assessment_Protocols.pdf</a>
6	Aquatic Biodiversity Impact Assessment	<a href="https://screening.environment.gov.za/ScreeningDownloads/AssessmentProtocols/Gazetted_Aquatic_Biodiversity_Assessment_Protocols.pdf">https://screening.environment.gov.za/ScreeningDownloads/AssessmentProtocols/Gazetted_Aquatic_Biodiversity_Assessment_Protocols.pdf</a>
7	Avian Impact Assessment	<a href="https://screening.environment.gov.za/ScreeningDownloads/AssessmentProtocols/Gazetted_Avifauna_Assessment_Protocols.pdf">https://screening.environment.gov.za/ScreeningDownloads/AssessmentProtocols/Gazetted_Avifauna_Assessment_Protocols.pdf</a>
8	Civil Aviation Assessment	<a href="https://screening.environment.gov.za/ScreeningDownloads/AssessmentProtocols/Gazetted_Civil_Aviation_Installations_Assessment_Protocols.pdf">https://screening.environment.gov.za/ScreeningDownloads/AssessmentProtocols/Gazetted_Civil_Aviation_Installations_Assessment_Protocols.pdf</a>
9	Defense Assessment	<a href="https://screening.environment.gov.za/ScreeningDownloads/AssessmentProtocols/Gazetted_Defence_Installations_Assessment_Protocols.pdf">https://screening.environment.gov.za/ScreeningDownloads/AssessmentProtocols/Gazetted_Defence_Installations_Assessment_Protocols.pdf</a>
10	RFI Assessment	<a href="https://screening.environment.gov.za/ScreeningDownloads/AssessmentProtocols/Gazetted_General_Requirement_Assessment_Protocols.pdf">https://screening.environment.gov.za/ScreeningDownloads/AssessmentProtocols/Gazetted_General_Requirement_Assessment_Protocols.pdf</a>
11	Noise Impact Assessment	<a href="https://screening.environment.gov.za/ScreeningDownloads/AssessmentProtocols/Gazetted_Noise_Impacts_Assessment_Protocol.pdf">https://screening.environment.gov.za/ScreeningDownloads/AssessmentProtocols/Gazetted_Noise_Impacts_Assessment_Protocol.pdf</a>
12	Flicker Assessment	<a href="https://screening.environment.gov.za/ScreeningDownloads/AssessmentProtocols/Gazetted_General_Requirement_Assessment_Protocols.pdf">https://screening.environment.gov.za/ScreeningDownloads/AssessmentProtocols/Gazetted_General_Requirement_Assessment_Protocols.pdf</a>
13	Traffic Impact Assessment	<a href="https://screening.environment.gov.za/ScreeningDownloads/AssessmentProtocols/Gazetted_General_Requirement_Assessment_Protocols.pdf">https://screening.environment.gov.za/ScreeningDownloads/AssessmentProtocols/Gazetted_General_Requirement_Assessment_Protocols.pdf</a>
14	Geotechnical Assessment	<a href="https://screening.environment.gov.za/ScreeningDownloads/AssessmentProtocols/Gazetted_General_Requirement_Assessment_Protocols.pdf">https://screening.environment.gov.za/ScreeningDownloads/AssessmentProtocols/Gazetted_General_Requirement_Assessment_Protocols.pdf</a>

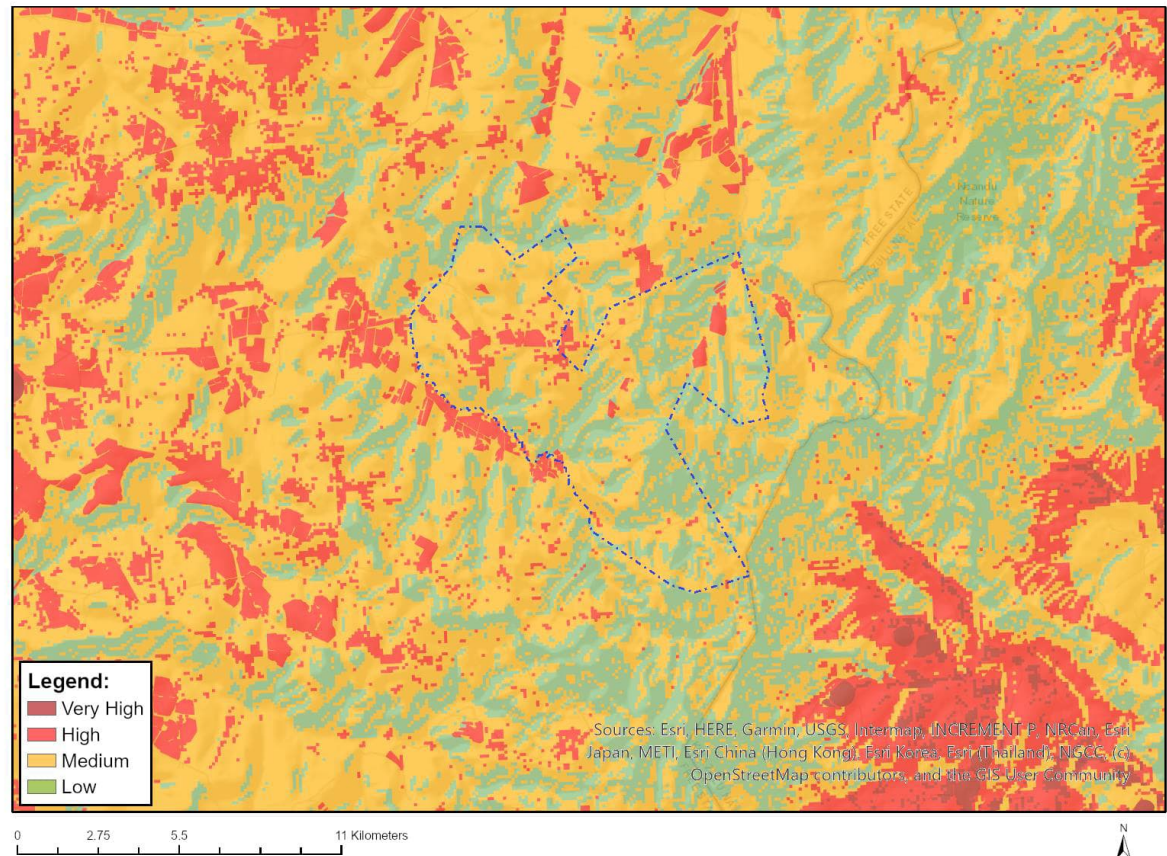


		<a href="#">ssmentProtocols/Gazetted General Requirement Assessment Protocols.pdf</a>
15	Socio-Economic Assessment	<a href="https://screening.environment.gov.za/ScreeningDownloads/AssessmentProtocols/Gazetted General Requirement Assessment Protocols.pdf">https://screening.environment.gov.za/ScreeningDownloads/AssessmentProtocols/Gazetted General Requirement Assessment Protocols.pdf</a>
16	Plant Species Assessment	<a href="https://screening.environment.gov.za/ScreeningDownloads/AssessmentProtocols/Gazetted Plant Species Assessment Protocols.pdf">https://screening.environment.gov.za/ScreeningDownloads/AssessmentProtocols/Gazetted Plant Species Assessment Protocols.pdf</a>
17	Animal Species Assessment	<a href="https://screening.environment.gov.za/ScreeningDownloads/AssessmentProtocols/Gazetted Animal Species Assessment Protocols.pdf">https://screening.environment.gov.za/ScreeningDownloads/AssessmentProtocols/Gazetted Animal Species Assessment Protocols.pdf</a>

# Results of the environmental sensitivity of the proposed area.

The following section represents the results of the screening for environmental sensitivity of the proposed site for relevant environmental themes associated with the project classification. It is the duty of the EAP to ensure that the environmental themes provided by the screening tool are comprehensive and complete for the project. Refer to the disclaimer.

## MAP OF RELATIVE AGRICULTURE THEME SENSITIVITY

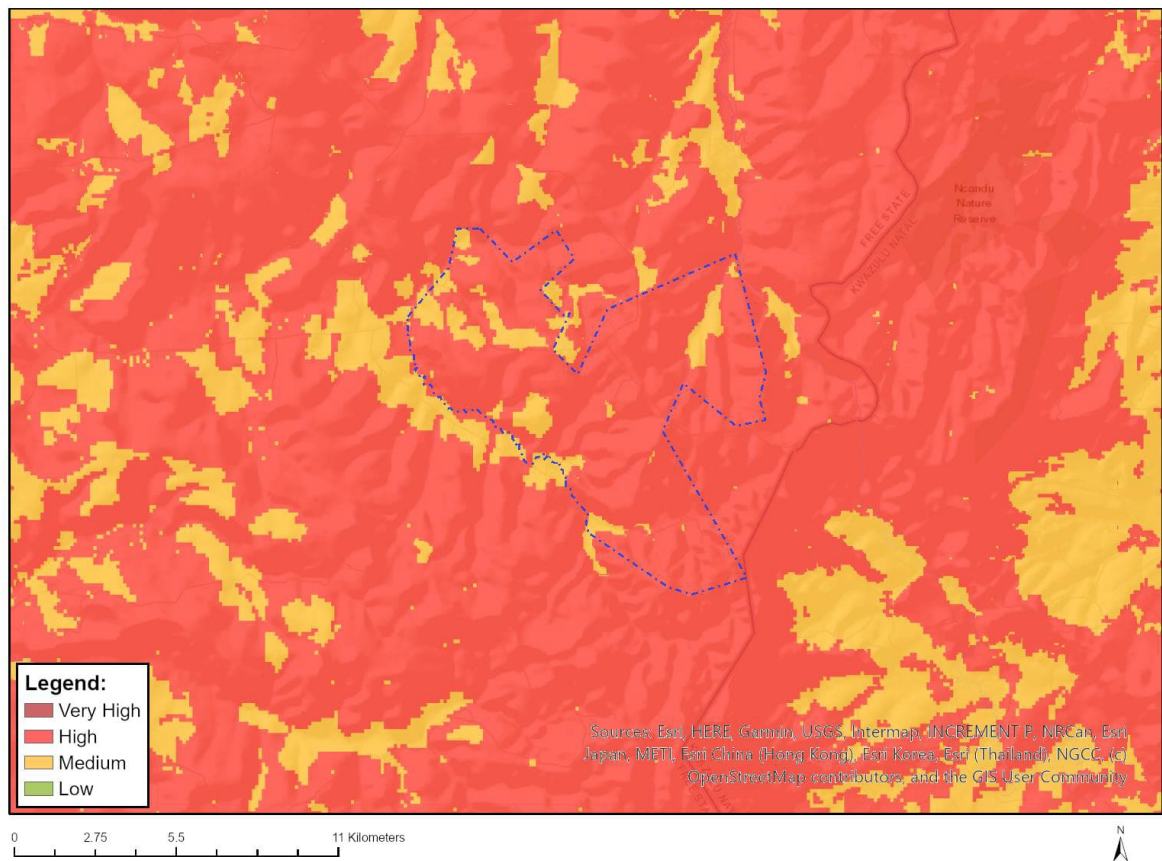


Very High sensitivity	High sensitivity	Medium sensitivity	Low sensitivity
	X		

### Sensitivity Features:

Sensitivity	Feature(s)
High	Land capability;09. Moderate-High/10. Moderate-High
High	Annual Crop Cultivation / Planted Pastures Rotation;Land capability;09. Moderate-High/10. Moderate-High
High	Annual Crop Cultivation / Planted Pastures Rotation;Land capability;06. Low-Moderate/07. Low-Moderate/08. Moderate
High	Annual Crop Cultivation / Planted Pastures Rotation;Land capability;01. Very low/02. Very low/03. Low-Very low/04. Low-Very low/05. Low
Low	Land capability;01. Very low/02. Very low/03. Low-Very low/04. Low-Very low/05. Low
Medium	Land capability;06. Low-Moderate/07. Low-Moderate/08. Moderate

## MAP OF RELATIVE ANIMAL SPECIES THEME SENSITIVITY



Where only a sensitive plant unique number or sensitive animal unique number is provided in the screening report and an assessment is required, the environmental assessment practitioner (EAP) or specialist is required to email SANBI at [eiadatarequests@sanbi.org.za](mailto:eiadatarequests@sanbi.org.za) listing all sensitive species with their unique identifiers for which information is required. The name has been withheld as the species may be prone to illegal harvesting and must be protected. SANBI will release the actual species name after the details of the EAP or specialist have been documented.

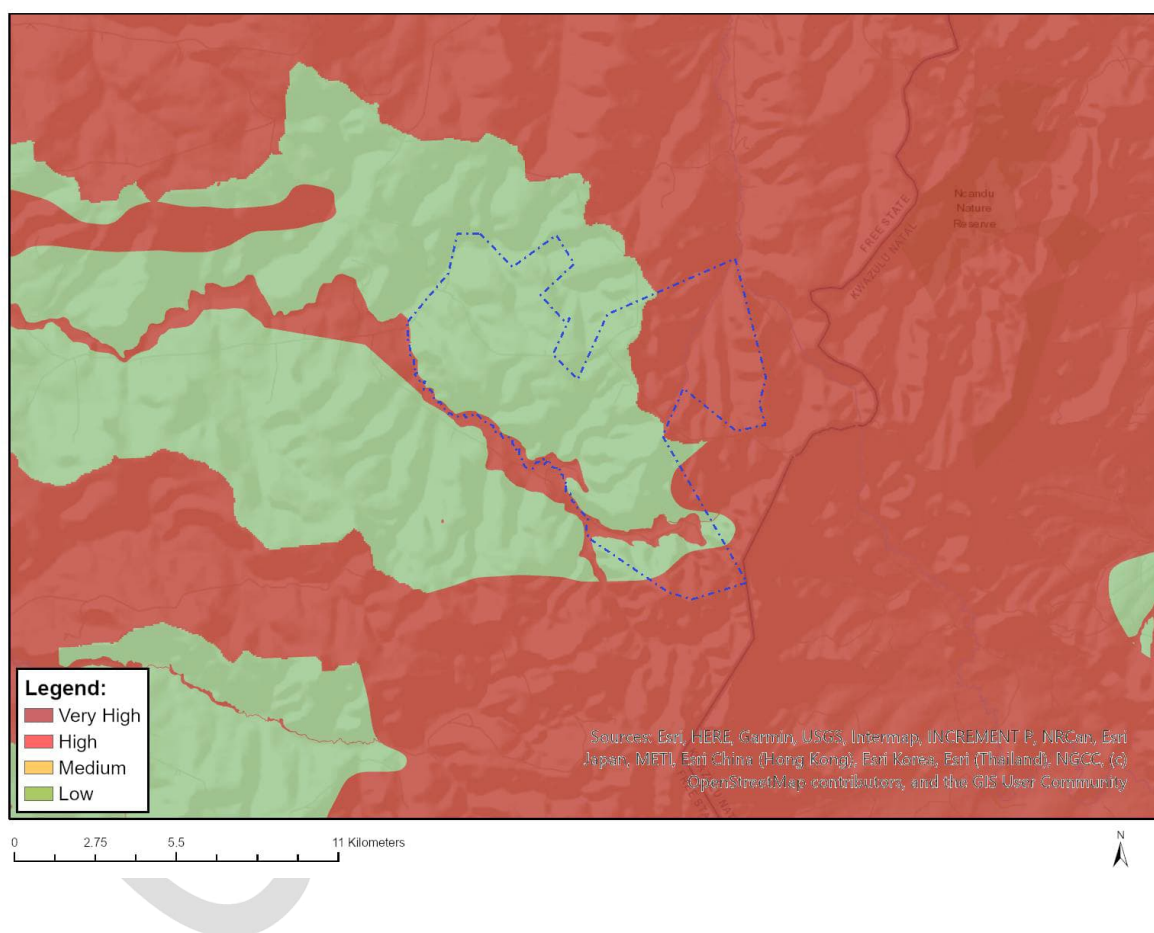
Very High sensitivity	High sensitivity	Medium sensitivity	Low sensitivity
	X		

### Sensitivity Features:

Sensitivity	Feature(s)
High	Aves-Sagittarius serpentarius
High	Aves-Geronticus calvus
High	Aves-Sylvia nigricapillus
High	Aves-Ciconia nigra
High	Aves-Neotis denhami
High	Aves-Balearica regulorum
High	Aves-Falco biarmicus
High	Aves-Polemaetus bellicosus
High	Aves-Eupodotis senegalensis
High	Aves-Grus carunculata
High	Aves-Anthus chloris
Medium	Aves-Tyto capensis
Medium	Aves-Eupodotis senegalensis

Medium	Aves-Anthus chloris
Medium	Aves-Sagittarius serpentarius
Medium	Aves-Sylvia nigricapillus
Medium	Aves-Ciconia nigra
Medium	Aves-Neotis denhami
Medium	Aves-Heteromira fra ruddi
Medium	Aves-Grus carunculata
Medium	Aves-Balearica regulorum
Medium	Sensitive species 23
Medium	Mammalia-Hydrictis maculicollis
Medium	Mammalia-Ourebia ourebi ourebi
Medium	Invertebrate-Clonia lalandei

## MAP OF RELATIVE AQUATIC BIODIVERSITY THEME SENSITIVITY



Very High sensitivity	High sensitivity	Medium sensitivity	Low sensitivity
X			

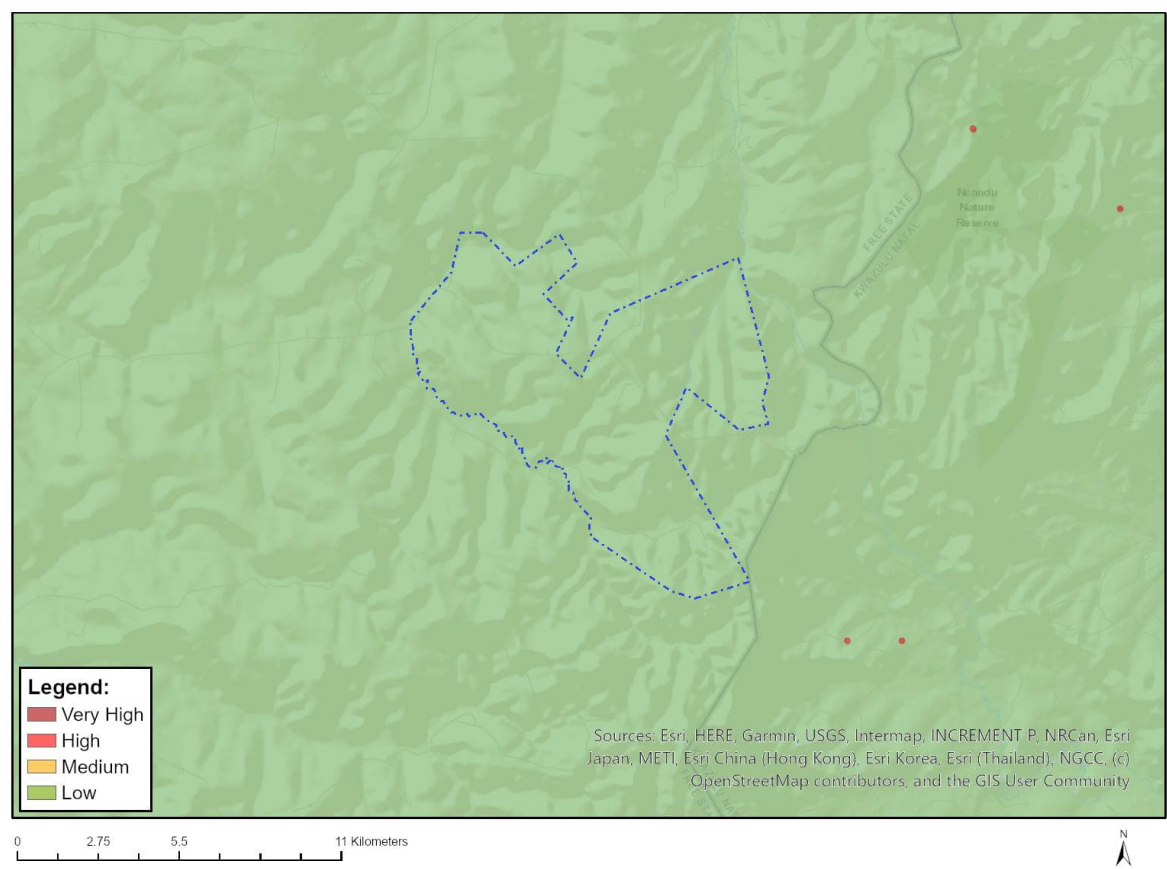
### Sensitivity Features:

Sensitivity	Feature(s)
Low	Low sensitivity
Very High	FEPA Subcatchment
Very High	Rivers_AB
Very High	SWSA (SW) _Northern Drakensberg
Very High	Wetlands_Mesic Highveld Grassland Bioregion (Floodplain)



Very High	Wetlands_Sub-Escarpment Grassland Bioregion (Depression)
-----------	--

### MAP OF RELATIVE ARCHAEOLOGICAL AND CULTURAL HERITAGE THEME SENSITIVITY

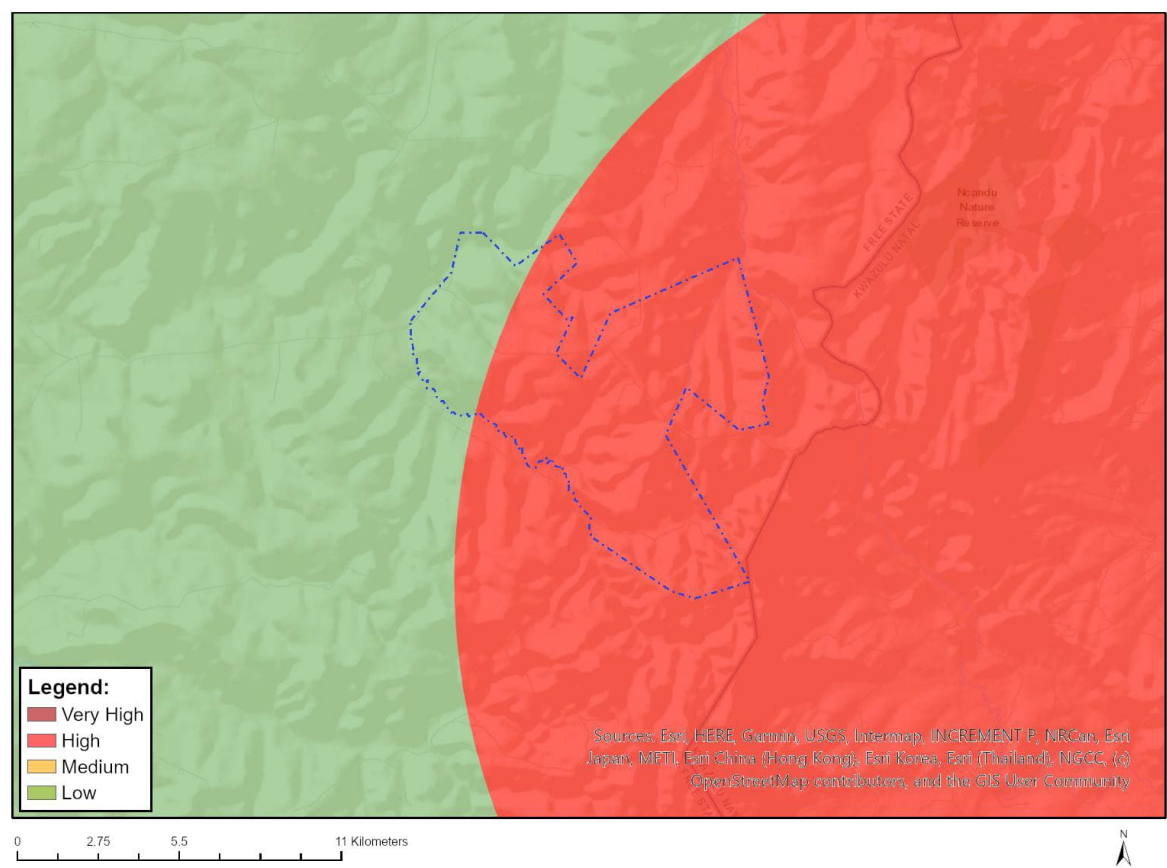


Very High sensitivity	High sensitivity	Medium sensitivity	Low sensitivity
			X

#### Sensitivity Features:

Sensitivity	Feature(s)
Low	Low sensitivity

MAP OF RELATIVE AVIAN (WIND) THEME SENSITIVITY



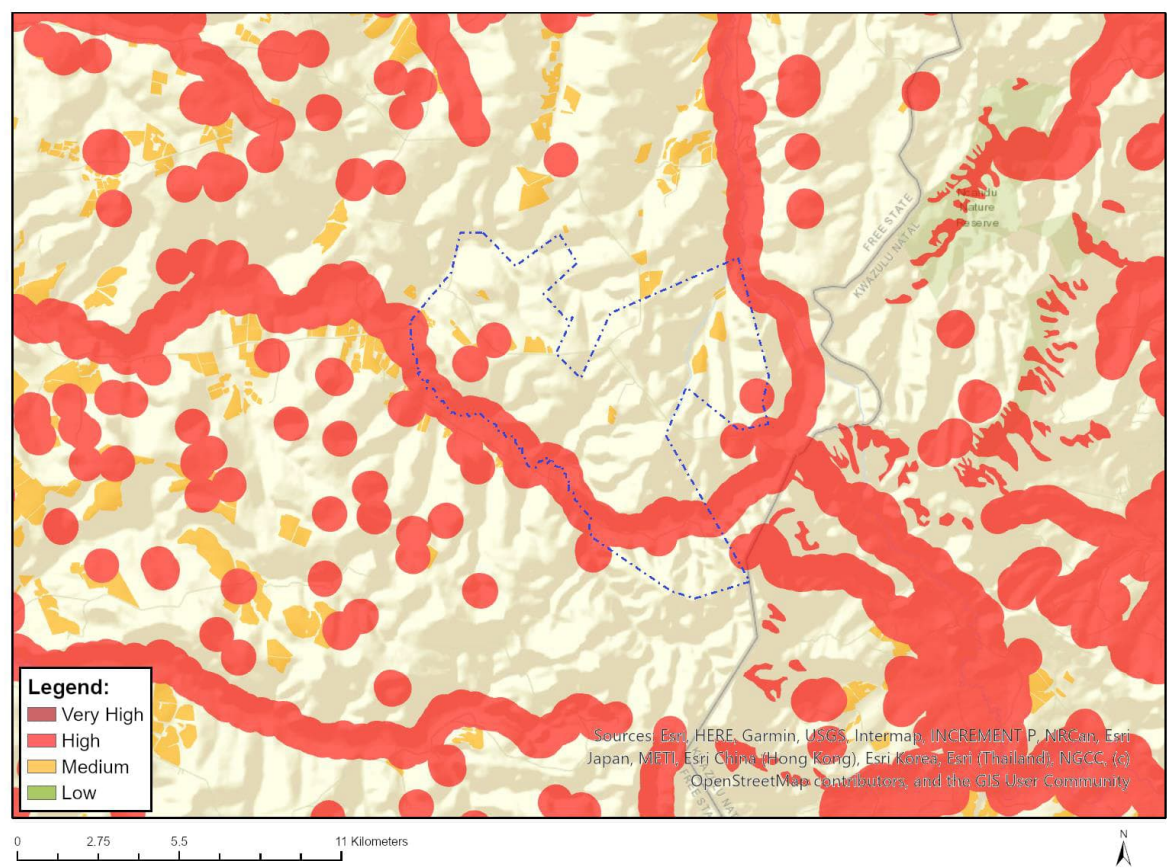
Very High sensitivity	High sensitivity	Medium sensitivity	Low sensitivity
	X		

Sensitivity Features:

Sensitivity	Feature(s)
High	within 20 km of known Cape Vulturerestrarants sites
Low	Area Outside Sensitivities



MAP OF RELATIVE BATS (WIND) THEME SENSITIVITY

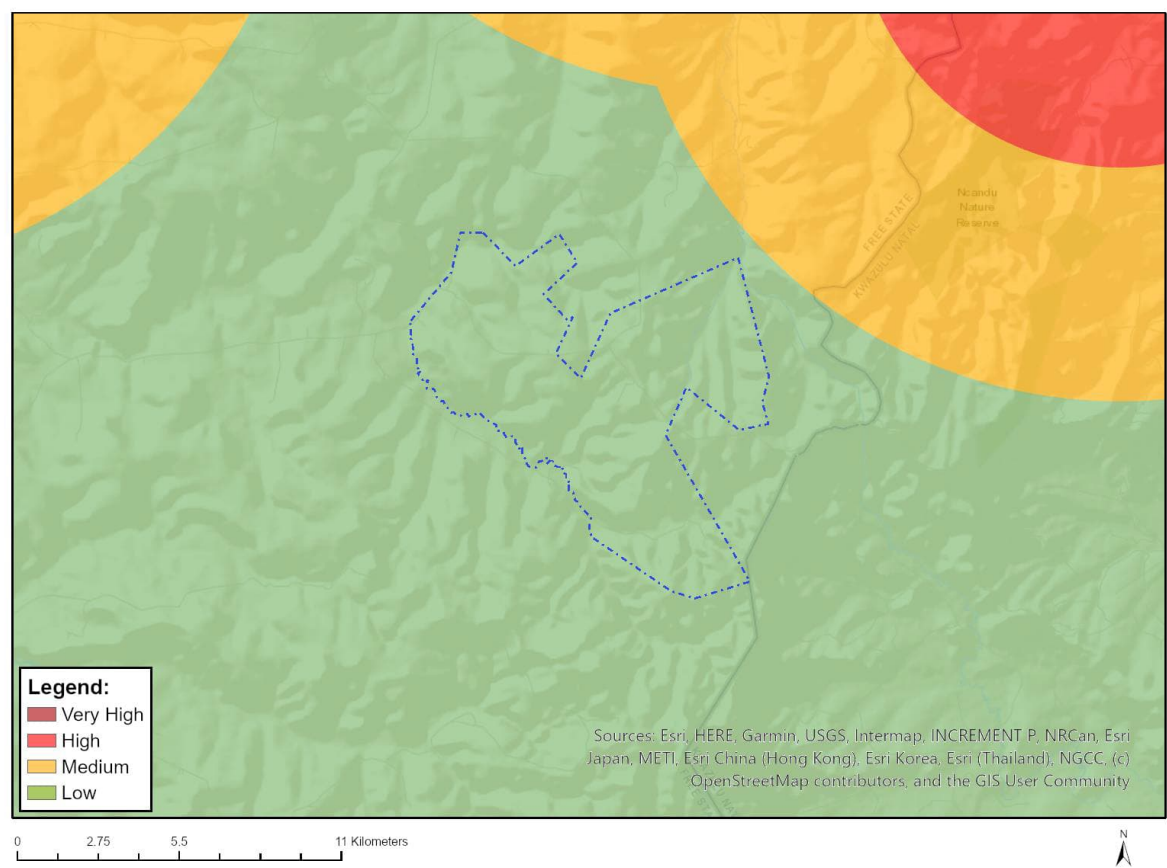


Very High sensitivity	High sensitivity	Medium sensitivity	Low sensitivity
	X		

Sensitivity Features:

Sensitivity	Feature(s)
High	Within 500 m of a river
High	Wetland
High	Within 500 m of a wetland
Medium	Croplands

MAP OF RELATIVE CIVIL AVIATION (WIND) THEME SENSITIVITY

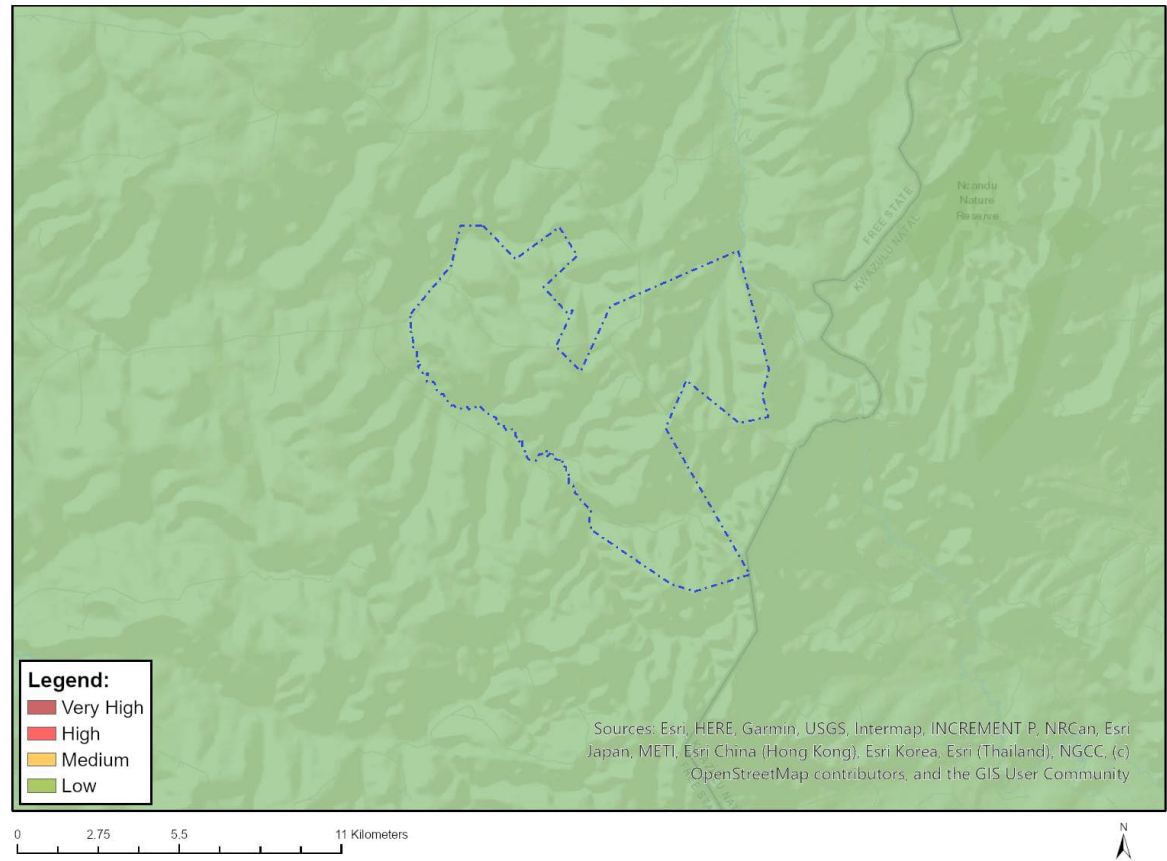


Very High sensitivity	High sensitivity	Medium sensitivity	Low sensitivity
			X

Sensitivity Features:

Sensitivity	Feature(s)
Low	Low sensitivity

MAP OF RELATIVE DEFENCE (WIND) THEME SENSITIVITY

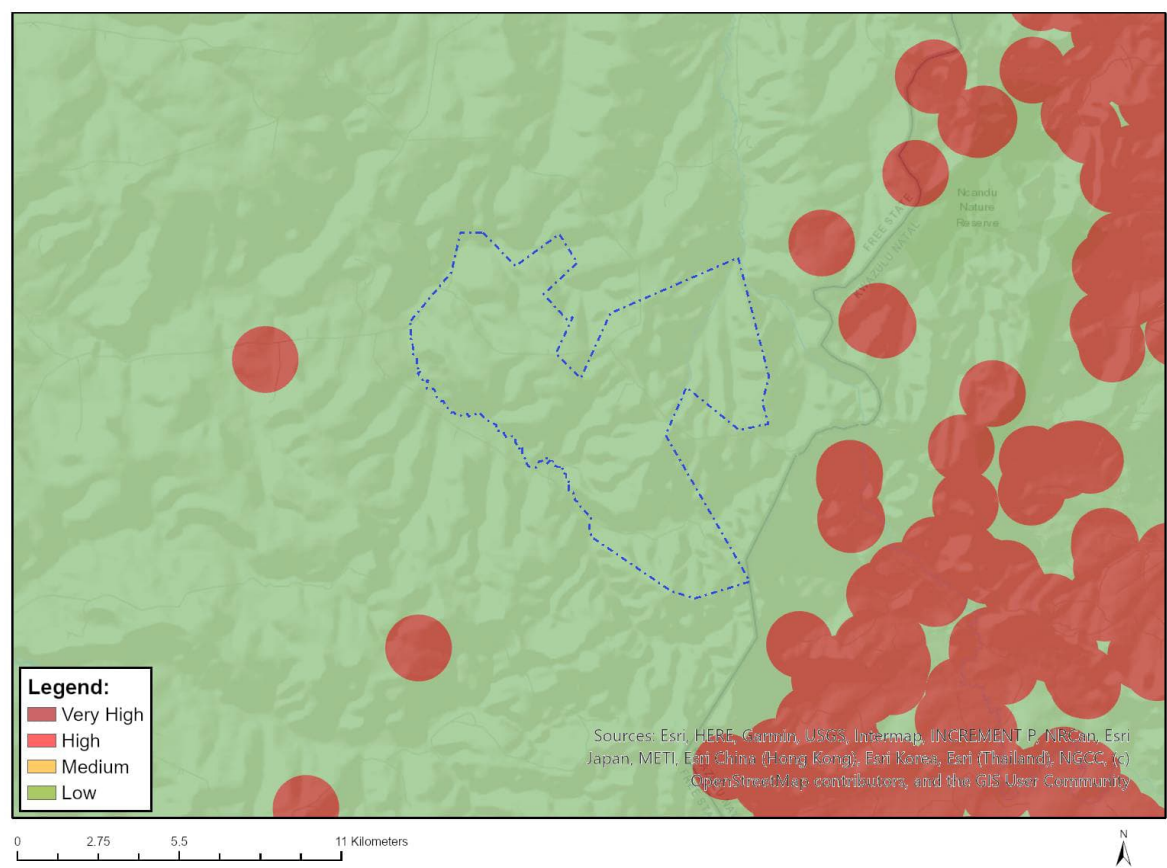


Very High sensitivity	High sensitivity	Medium sensitivity	Low sensitivity
			X

Sensitivity Features:

Sensitivity	Feature(s)
Low	Low sensitivity

MAP OF RELATIVE FLICKER THEME SENSITIVITY



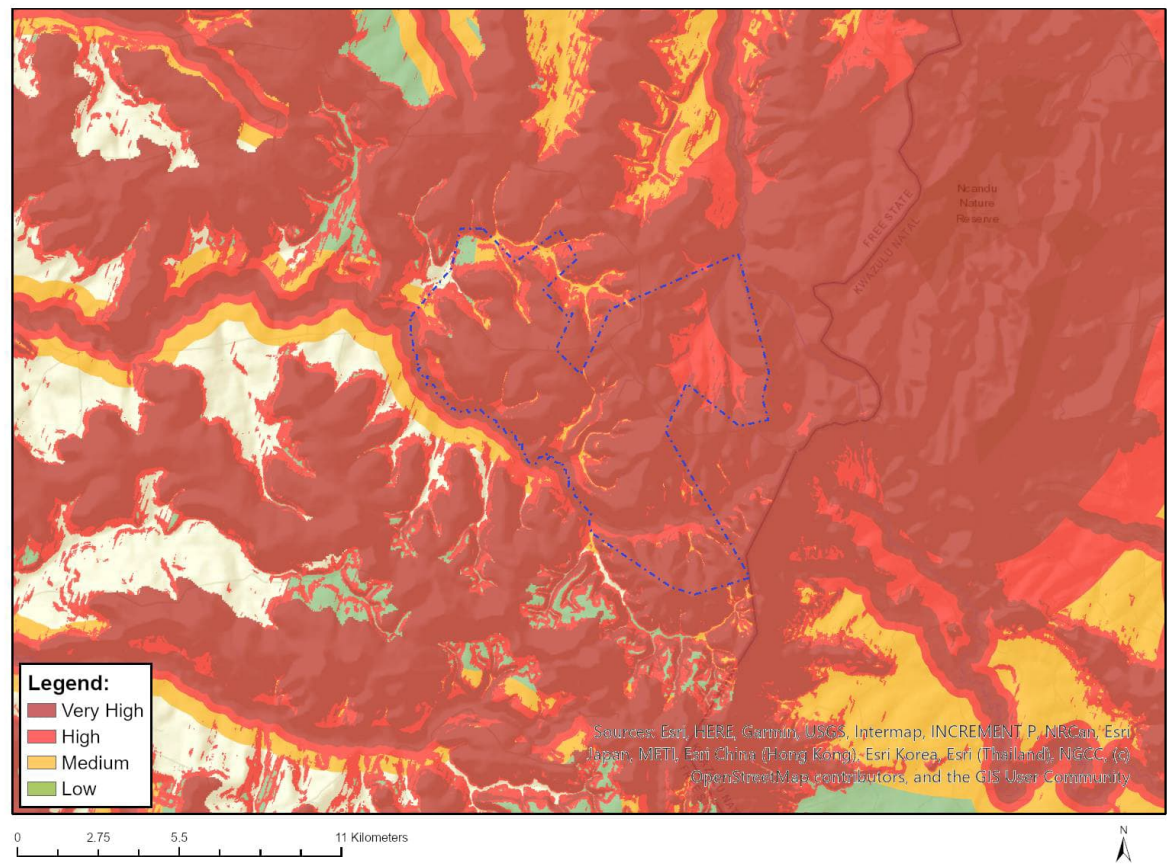
Very High sensitivity	High sensitivity	Medium sensitivity	Low sensitivity
			X

Sensitivity Features:

Sensitivity	Feature(s)
Low	Area of low sensitivity



MAP OF RELATIVE LANDSCAPE (WIND) THEME SENSITIVITY

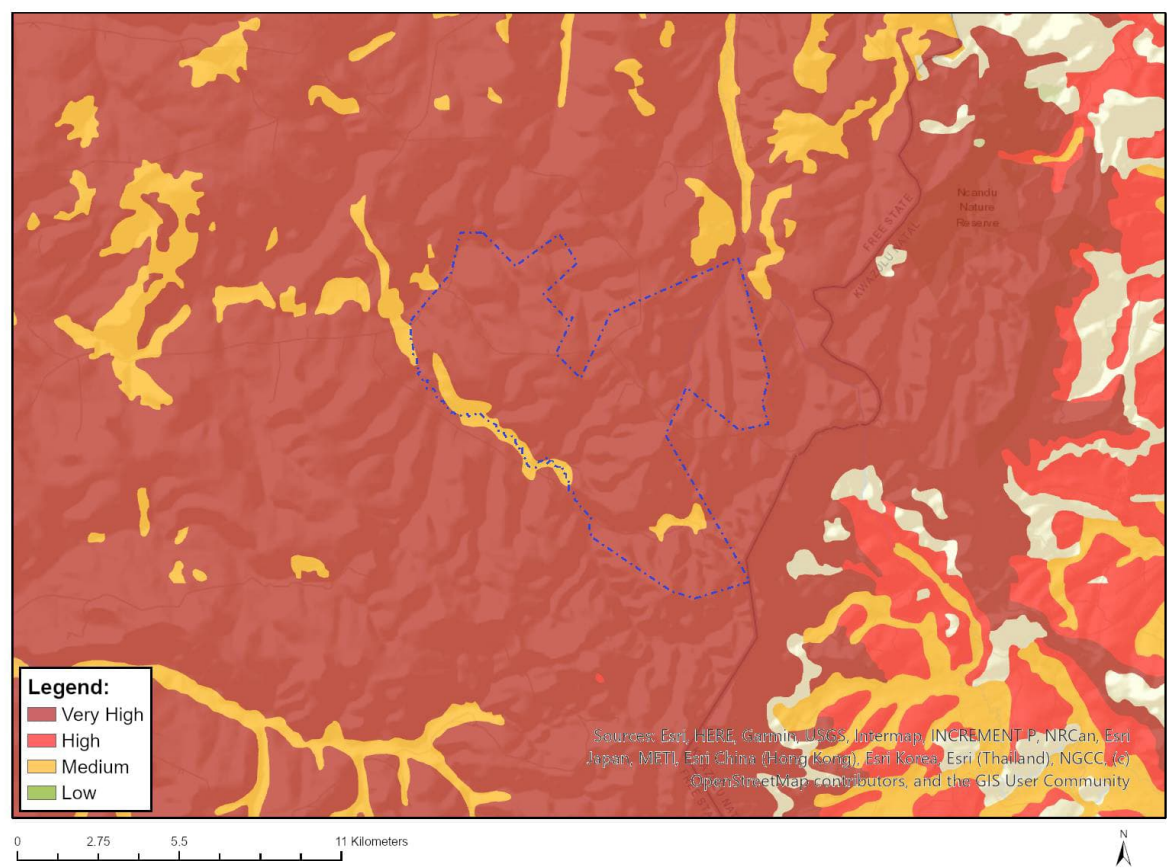


Very High sensitivity	High sensitivity	Medium sensitivity	Low sensitivity
X			

Sensitivity Features:

Sensitivity	Feature(s)
High	Slope between 1:4 and 1:10
High	Between 3 and 5 km of a nature reserve, botanical garden or other protected area
High	Within 500 m of a river
Low	Slope less than 1:10
Medium	Between 5 and 10 km of a nature reserve, botanical garden or other protected area
Medium	Within 1000 m of a wetland
Very High	Mountain tops and high ridges
Very High	Slope more than 1:4
Very High	Within 3 km of a nature reserve, botanical garden or other protected area
Very High	Within 250 m of a river

MAP OF RELATIVE PALEONTOLOGY THEME SENSITIVITY



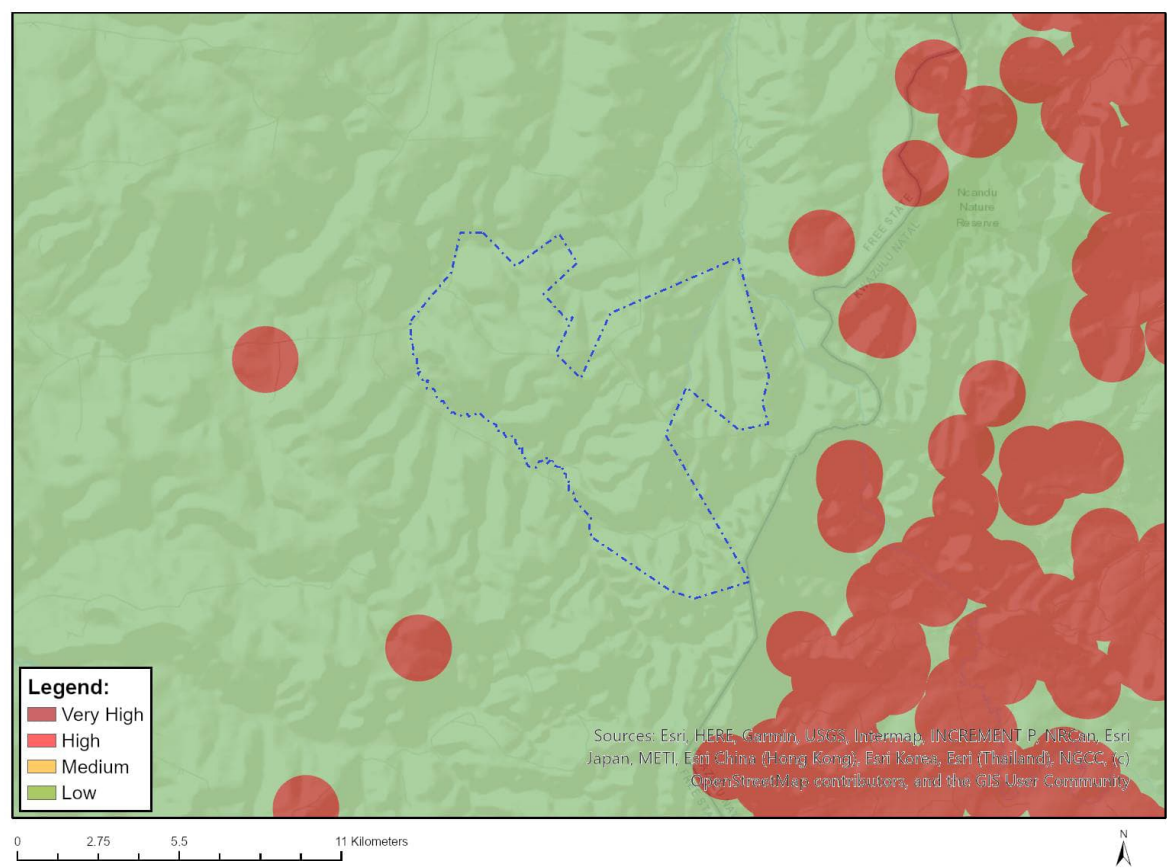
Very High sensitivity	High sensitivity	Medium sensitivity	Low sensitivity
X			

Sensitivity Features:

Sensitivity	Feature(s)
Medium	Features with a Medium paleontological sensitivity
Very High	Features with a Very High paleontological sensitivity



MAP OF RELATIVE NOISE THEME SENSITIVITY

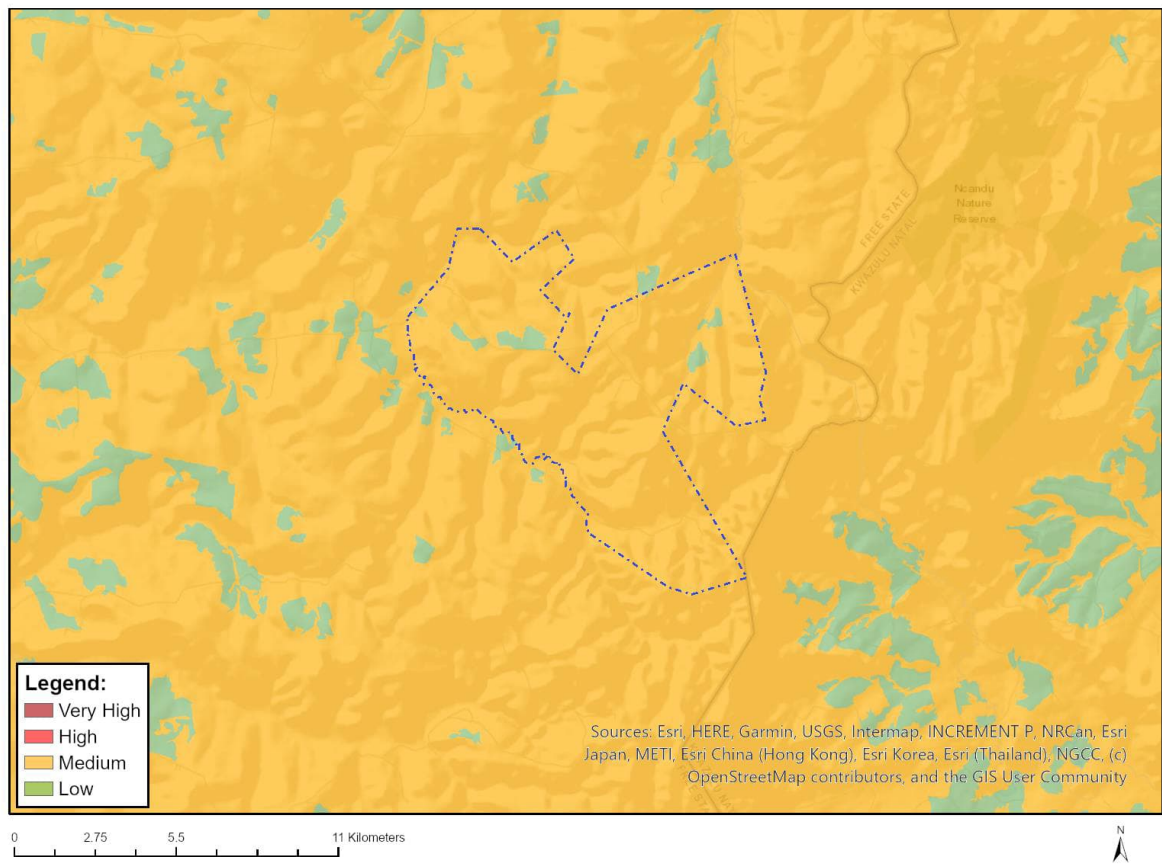


Very High sensitivity	High sensitivity	Medium sensitivity	Low sensitivity
			X

Sensitivity Features:

Sensitivity	Feature(s)
Low	Area of low sensitivity

## MAP OF RELATIVE PLANT SPECIES THEME SENSITIVITY



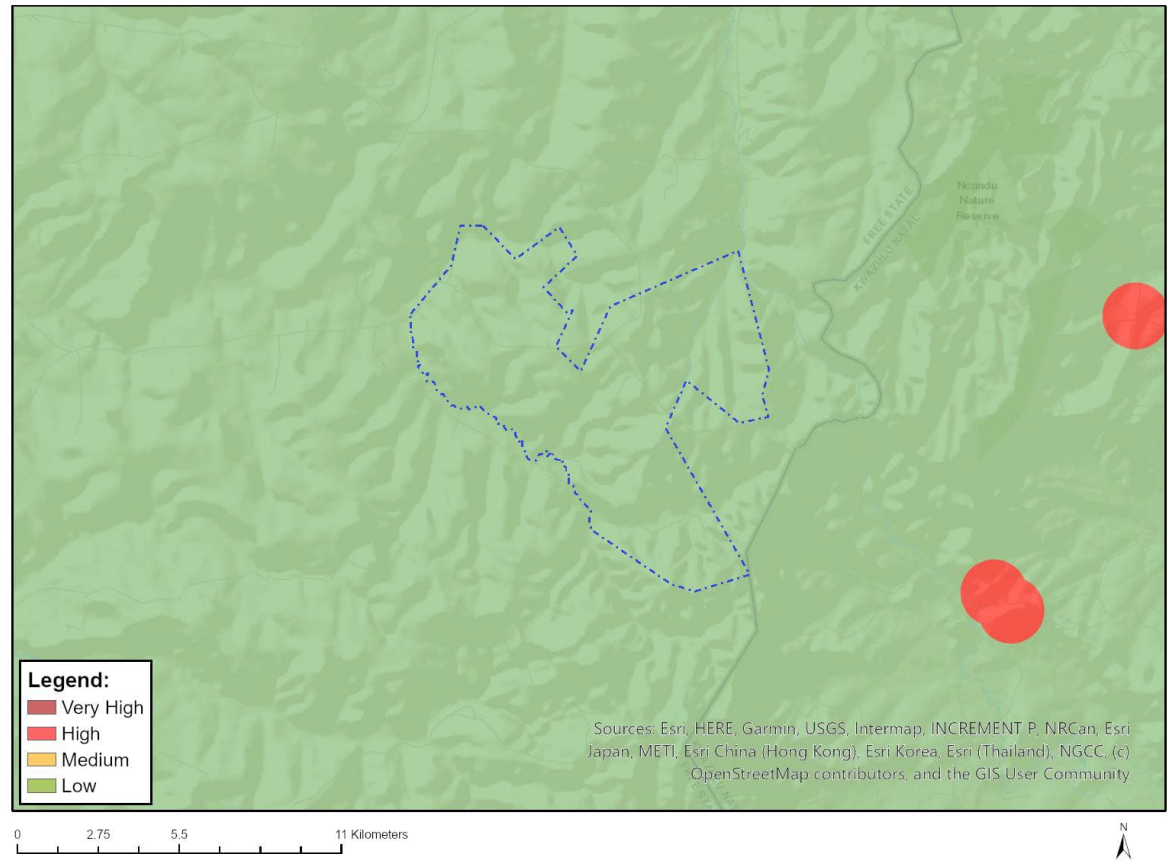
Where only a sensitive plant unique number or sensitive animal unique number is provided in the screening report and an assessment is required, the environmental assessment practitioner (EAP) or specialist is required to email SANBI at [eiadatarequests@sanbi.org.za](mailto:eiadatarequests@sanbi.org.za) listing all sensitive species with their unique identifiers for which information is required. The name has been withheld as the species may be prone to illegal harvesting and must be protected. SANBI will release the actual species name after the details of the EAP or specialist have been documented.

Very High sensitivity	High sensitivity	Medium sensitivity	Low sensitivity
		X	

### Sensitivity Features:

Sensitivity	Feature(s)
Low	Low Sensitivity
Medium	Sensitive species 1252
Medium	Lotononis amajubica
Medium	Sensitive species 998
Medium	Sensitive species 851

MAP OF RELATIVE RFI (WIND) THEME SENSITIVITY

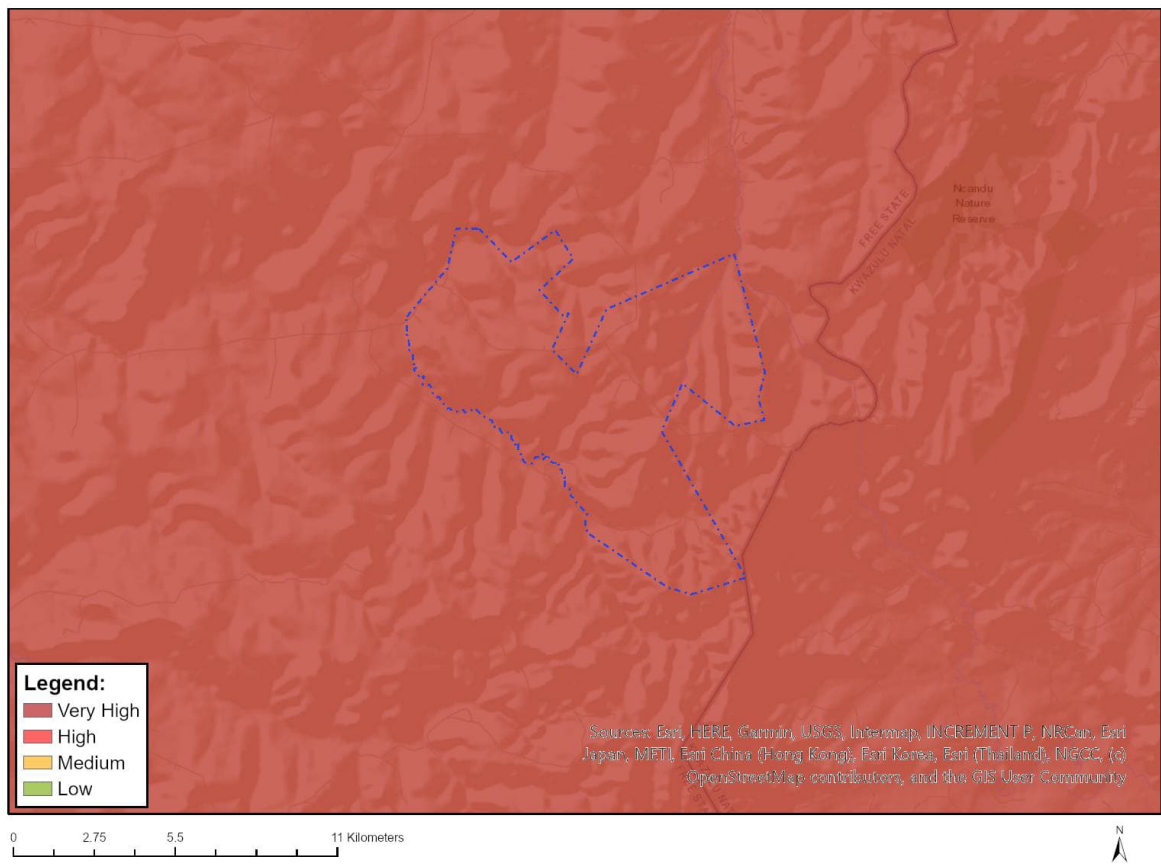


Very High sensitivity	High sensitivity	Medium sensitivity	Low sensitivity
			X

Sensitivity Features:

Sensitivity	Feature(s)
Low	Low sensitivity for telecommunications;None;More than 60 km from a Weather Radar installation

## MAP OF RELATIVE TERRESTRIAL BIODIVERSITY THEME SENSITIVITY

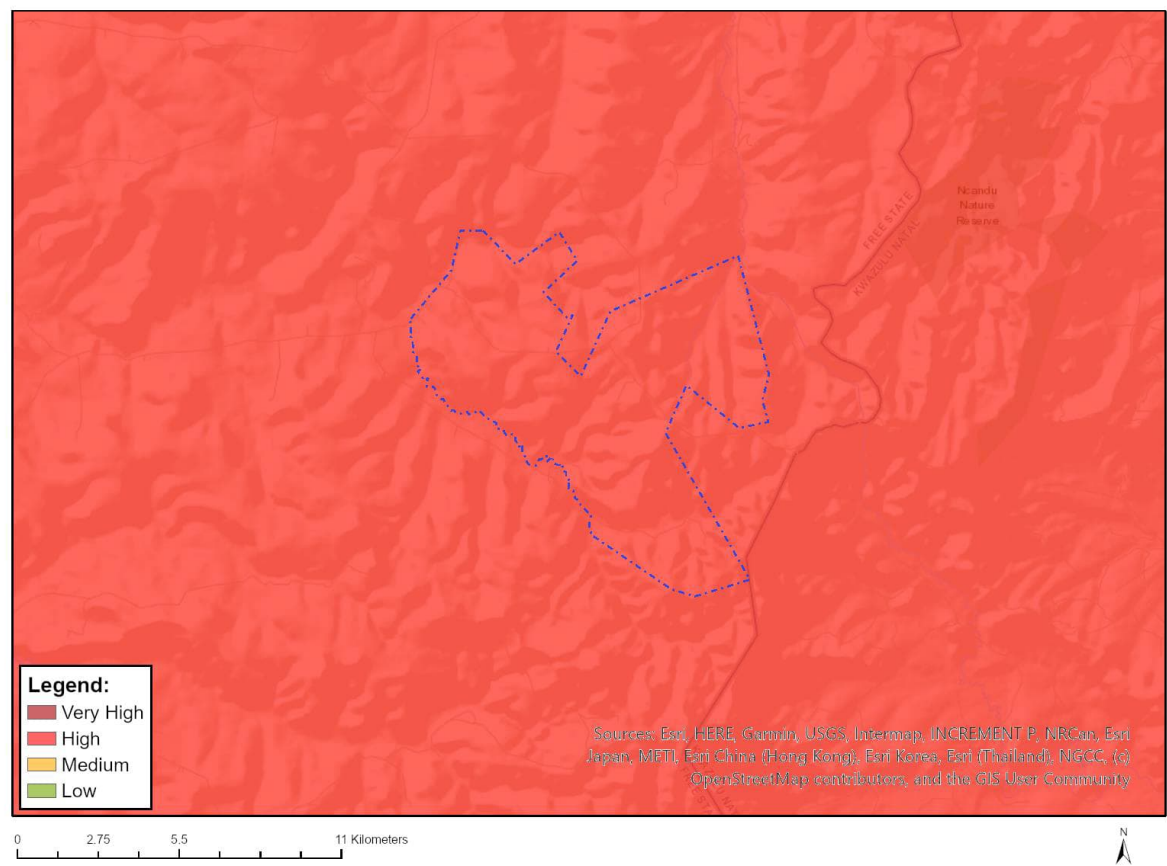


Very High sensitivity	High sensitivity	Medium sensitivity	Low sensitivity
X			

### Sensitivity Features:

Sensitivity	Feature(s)
Very High	ESA
Very High	CBA 1
Very High	CBA 2
Very High	ESA 1
Very High	ESA 2
Very High	FEPA Subcatchment
Very High	SWSA (SW) _Northern Drakensberg
Very High	National Protected Area Expansion Strategy (NPAES)

MAP OF RELATIVE VULTURE SPECIES THEME SENSITIVITY



Very High sensitivity	High sensitivity	Medium sensitivity	Low sensitivity
	X		

Sensitivity Features:

Sensitivity	Feature(s)
High	affecting an area between 10% - 20% of the population