

# Federal Programs and Logistics

Delivering mission excellence

wsp







# Delivering *value through integrated solutions*

**WSP USA supports federal agencies where and when support is needed.**

We have the global resources and reach to be in the right place at the right time and to provide integrated support across the entire project lifecycle – from planning, design and engineering to construction, program management and logistics, to operations and maintenance.

WSP works with federal agencies to engineer life-improving solutions, foster sustainable communities and protect national and natural resources. As trusted advisors, we work for, and in collaboration with, our federal clients

to develop cost-effective solutions that keep us safe today and prepare us for what tomorrow may bring.

We are on the front lines, solving challenging issues and delivering solutions in the following areas:

- Facilities Design
- Master Planning
- Logistics and Emergency Management
- Environmental Services
- Overseas Economic Development

## Trust

For over 100 years, WSP has developed long-standing, productive relationships with federal clients, including the U.S. Marine Corps, U.S. Naval Facilities Engineering Command (NAVFAC), U.S. Army Corps of Engineers (USACE), U.S. Agency for International Development (USAID), U.S. Department of Homeland Security, U.S. Department of State and U.S. Department of Energy, among others.

## Tailored Local Solutions

With 150 U.S. offices and 9,500 professionals, our clients have access to engineers, planners, scientists, technicians, consultants and academics, who develop effective solutions that reflect local environments. We leverage existing relationships with local governments and business partners to successfully complete work according to high standards of quality, safety and health.

## Life Cycle Approach

Our federal clients turn to us at all stages of the development life cycle: strategic and master planning, engineering design, procurement, construction, operations and maintenance.

## Experience

Leveraging the diverse expertise of our professionals has resulted in successful solutions for many large, mission-critical initiatives, including planning and development of new military facilities, rebuilding communities after natural disasters, enhancing border security, maintaining national parks and monuments, and restoring and protecting our ecosystem.

## Passion

We are passionate about our work and dedicated to the communities in which we live and work. We consider it a privilege to serve federal, state and local government in keeping our communities safe.





01

# Enhancing readiness of our nation's infrastructure

Federal facilities support government, as well as business and industry, civic and cultural affairs, healthcare and more. Solutions must adhere to federal guidelines but must also be cost effective, sustainable and aesthetically pleasing within the local cultural context.

Our multidisciplinary approach draws upon the expertise of a wide range of professionals. We hand-pick team members for every engagement, based on the nature of the assignment and the needs of our clients. It is important to us that our clients can depend on their WSP team, anytime and anywhere, to support and guide them throughout the most complex challenges. From initial concept planning and design through project completion,

WSP offers the full range of services across a wide range of facilities:

- Economic analyses
- Aviation
- Civic/cultural/religious
- Educational/institutional
- Healthcare
- Industrial
- Justice
- Residential
- Military
- Transit centers

## SMITHSONIAN INSTITUTE, NATIONAL MUSEUM OF AFRICAN AMERICAN HISTORY AND CULTURE

01

Image: © Alan Karchmer/NMAAHC

Situated on the National Mall, the National Museum of African American History and Culture is both a cultural and architectural landmark, as well as a showcase of sustainable building design. WSP's mechanical, electrical and plumbing (MEP) engineering, commissioning, high performance design and enclosure consulting teams proposed and implemented a wide range of innovative strategies to help the building perform 30% better than the average code-compliant ASHRAE 90.1-2004 building, with an energy use intensity of 92.0 kBtu/square feet. Key systems include a 384-panel photovoltaic array and a rainwater and groundwater collection and reuse system, among others.



02

## NAVFAC, ENGINEERING COMMAND IDIQ, UNIFORMED SERVICES UNIVERSITY OF HEALTH SCIENCES

02

In service of the many medical facilities it operates worldwide for service members, the NAVFAC indefinite delivery/indefinite quantity (IDIQ) contract for medical design projects covers hospitals, dental clinics, medical clinics, veterinary clinics, modernization projects, military construction projects and medical facilities worldwide. A joint venture of HKS and WSP was awarded this IDIQ as the sole source provider.

The largest task order under the IDIQ is a new facility for the Uniformed Services University at Walter Reed Medical Center, a new 478,000 square foot facility that will provide the Navy with a new education and research facility for training personnel. The joint venture's wide-ranging expertise provides NAVFAC with a uniquely integrated approach to providing the necessary consultation for this complex project, which includes Bio-Safety Level (BSL)-3 laboratories and will be designed to meet LEED certification.



03

## GENERAL SERVICES ADMINISTRATION, FEDERAL CENTER SOUTH, BUILDING 1202 (USACE SEATTLE HQ)

03

Image: © 2013 Benjamin Benschneider

The new home of USACE's Seattle District, Federal Center South Building 1202 had ambitious energy goals from the outset. WSP was an integral part of the project team, helping the building meet the targets required by the American Recovery and Reinvestment Act and federal energy goals.

Our integrated design approach focused on energy conservation measures in order to meet these goals. The result is a LEED Platinum building with an ENERGY STAR rating of 100, and which performs 40% below ASHRAE 2007 benchmarks. Key features of the building include a 25,000 gallon cistern for rainwater capture and reuse, 90% natural daylighting throughout the building, and a geothermal heating and cooling system that is combined with the structural piles – one of the first projects in the region to combine these systems. These features and many others help the Federal Center South perform in the top 1% of office buildings in the country in terms of energy performance.

In the one-year energy performance guarantee period from January 2013 to January 2014, the building met the contracted operational target.





04



05

## JOINT BASE LEWIS MCCHORD CHILD DEVELOPMENT CENTER

In the face of growing demand, the Seattle District of the USACE needed renovations and expansions to the Madigan, Beachwood, Clarkmoor and Youthcenter Child Development Centers (CDC).

Working closely with USACE, WSP served as the lead consultant responsible for project management, including initial and final designs for the civil and structural components of the total renovation and expansion of the facilities, ultimately allowing each to accommodate an additional 60 children. The WSP team also installed and deployed data and security infrastructure and life safety systems, as well as supporting facilities and force protection measures.

## DEPARTMENT OF HOMELAND SECURITY, NATIONAL BIO AND AGRO-DEFENSE FACILITY

04

In response to threats facing our nation that could potentially jeopardize the \$95 billion U.S. agriculture and health industry, the Department of Homeland Security is commissioning the new National Bio and Agro-defense Facility (NBAF), which will be located on the campus of Kansas State University in Manhattan, Kansas. The BSL-4 facility replaces the Plum Island Animal Disease Center, a Federal Complex where research on foreign animal diseases has been ongoing since 1954.

WSP is providing lead MEP engineering and site infrastructure for the facility, as well as commissioning for the specialty research laboratories with a focus on providing a state-of-the-art facility to help the U.S. Government enhance capabilities to meet the mandated national bio and agro-defense mission requirements of the U.S. Departments of Homeland Security, Health and Human Services and Agriculture.

## GSA, THURGOOD MARSHALL FEDERAL COURTHOUSE

05

Image: © Timothy Schenck 2013

To meet future technology and sustainability demands, the Cass Gilbert-designed Thurgood Marshall Courthouse in lower Manhattan, New York City required a complete MEP infrastructure upgrade, in addition to other renovations. WSP worked closely with the GSA to provide specialized systems to meet this need while being sensitive to the landmark status of the courthouse.

All existing engineering systems were removed and replaced. The combined effect of the new lighting and other building system upgrades was a project energy savings of 15% compared with new construction, helping the project earn LEED Silver certification. The project goals were achieved without major modifications to the building envelope's thermal properties.

## DEPARTMENT OF STATE BUREAU OF OVERSEAS BUILDING OPERATIONS, US EMBASSY IN NEW DELHI

WSP has worked closely with the Department of State Bureau of Overseas Building Operations for several decades, providing a range of services to embassies and other government facilities throughout Europe, Asia and Latin America.

Among current projects is the renovation and addition to the U.S. Embassy in New Delhi, India. WSP is working closely with the architectural team to envision the main Chancery Building, which is currently listed on the Secretary of State's Register of Culturally Significant Property. The project also includes a new masterplan and historic studies, as well as complex utility sequencing, and phased demolition and construction of 14 new buildings. WSP is assisting the team in delivering a top-of-the-line facility with unique local considerations, including an air filtration system designed to overcome the high concentration of outdoor air pollutants and full backup power generation to allow the campus to remain operational in the event of an electric utility outage.





# Balancing infrastructure with communities and environment

Planning is the cornerstone of any project, ensuring that the infrastructure developed is harmonized with the communities and environment that surround it. Military master planning must reflect the full spectrum of users, from trainees to families, while adhering to strict guidelines to ensure safety, security and the flexibility to meet current and future needs.

WSP has partnered with federal clients around the globe to deliver some of the largest planning programs worldwide, from managing the largest ecosystem restoration plan in the U.S. to developing an urban infrastructure master plan in India. Our expertise spans the full spectrum of disciplines, including transportation, rural and urban, environmental, financial and logistics, with a wide range of services.

- Economic analyses
- Environmental impact analyses
- Social impact analyses
- Feasibility studies
- Area development and land use studies
- Risk assessments
- Sustainability/resiliency
- Transportation studies
- Community outreach

## U.S. SPECIAL OPERATIONS FORCES (SOF), 01 SOF COMPLEX MASTER PLAN

WSP led a multidisciplinary team to plan and develop design-build RFP documents. Tasks included field investigations, technical feasibility assessments, geotechnical evaluation, site surveying and cost estimating. The project also included construction of seven buildings with varying purposes ranging in size from 2,130 square feet to 124,000 square feet.

Building systems included installation of overhead crane, fire detection and suppression systems, and energy management controls to match the local system; communications networks; protected distribution system; intrusion detection and surveillance and electronic access control. Supporting facilities included site work and utilities, lighting and storm drainage. Buildings were designed to achieve U.S. Green Building Council's LEED Silver certification, comply with antiterrorism/force protection measures and meet Americans with Disabilities Act and Architectural Barriers Act Accessibility Guidelines, where applicable.

## VIRGINIA DEPARTMENT OF MILITARY AFFAIRS, REAL PROPERTY MASTER PLAN, FORT PICKETT 02

WSP's work for the Virginia Department of Military Affairs includes master planning, programming and DD Form 1390/91 development for training installations, readiness centers and other Virginia Army National Guard aviation, emergency and administrative facilities. Under 33 separate task orders, WSP provided comprehensive planning using multidisciplinary teams, bringing a wide range of experience to several unique projects. Master plans for Fort Pickett and the State Military Reservation were developed in accordance with UFC 2-100-01, helping the installations clarify their missions and requirements, as well as creating the framework plan, area development plans, planning standards and development program.

## NAVFAC, NAVAL AIR WEAPONS STATION (NAWS) MASTER PLAN, CHINA LAKE 03

To meet the needs of the Pacific Fleet while minimizing additional infrastructure and facilities, the NAVFAC Southwest commissioned the development of three master plans to inform efficient planning and development decisions for the next 20 years. NAWS China Lake is a key asset in the Department of Defense testing and evaluation infrastructure, and with 1.1 million acres, its largest land holding. The WSP team worked closely with NAVFAC to align NAWS China Lake with current and future operational requirements, allowing the facility to provide quality services to military personnel and their families. In line with the master plan objectives, we also identified strategies for leveraging the limited Navy funding and developed a plan to help the installation pursue energy independence.

## WALTER REED NATIONAL MILITARY MEDICAL CENTER, WOUNDED WARRIOR AREA PLAN, BETHESDA 04

The Wounded Warrior Area Plan is a master plan developed by WSP that addresses the health and well-being of recovering service members. WSP used an evidence-based design approach to develop the plan, which focused on nature and featured environmentally sensitive design. The plan emphasizes ease of movement around the installation for a user group that includes amputees learning to use a range of mobility devices and prosthetics; enhances opportunities for peer support in social and recreational spaces; increases access to nature and its healing potential; and integrates purposeful and meaningful activities for recovering service members, their care providers and medical staff.

The area plan was supported by scientifically-proven evidence that landscape design results in positive clinical outcomes. Streetscape requirements and building placement reinforced a coherent approach to storm-water management that fulfills the program needs.





## IMCOM EUROPE — PROGRAM EXECUTION PLAN AND PROJECT PROGRAMMING FOR ARMY FAMILY HOUSING

05

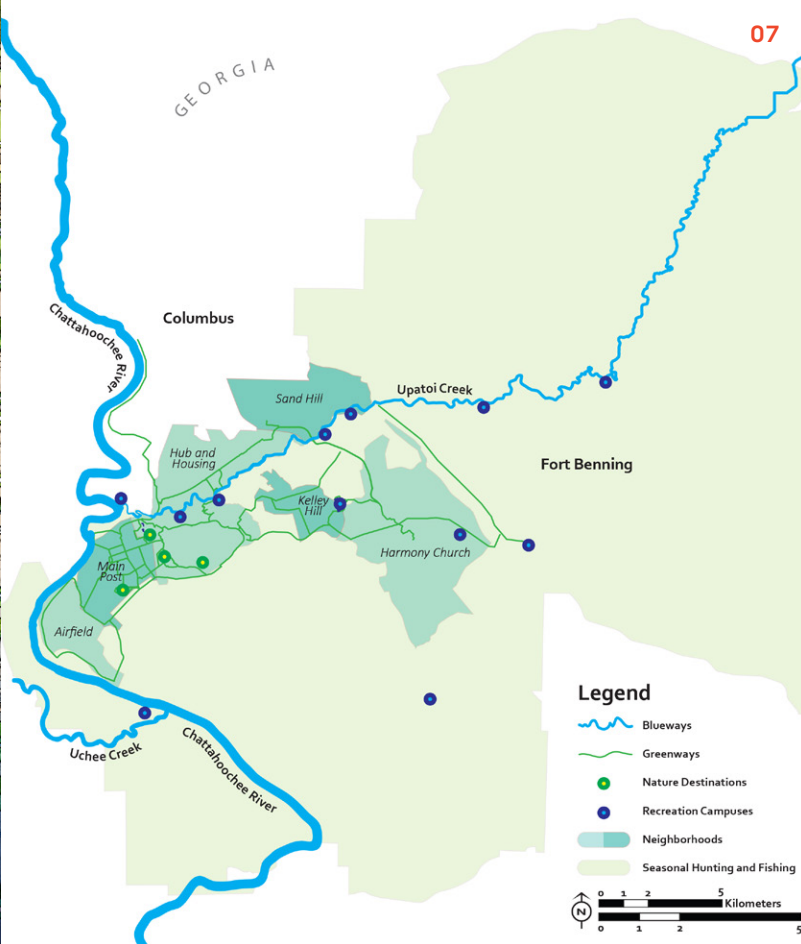
WSP recently developed Program Execution Plans (PEPs) for five US Army Garrisons in Germany. Each Garrison has housing areas that need to be brought up to compliance with current requirements for condition, force protection, balcony allocations and parking garage allocations. As part of this contract, WSP also submitted six FY20 DD 1391s into the PAX Processor for short-range AFHO funding, of which projects will be “proof of principle” prototypes of ADP recommendations for future development throughout the housing areas.



## TANK HILL DISTRICT AND SILVER WINGS DISTRICT AREA DEVELOPMENT PLANS, FORT RUCKER, ALABAMA

06

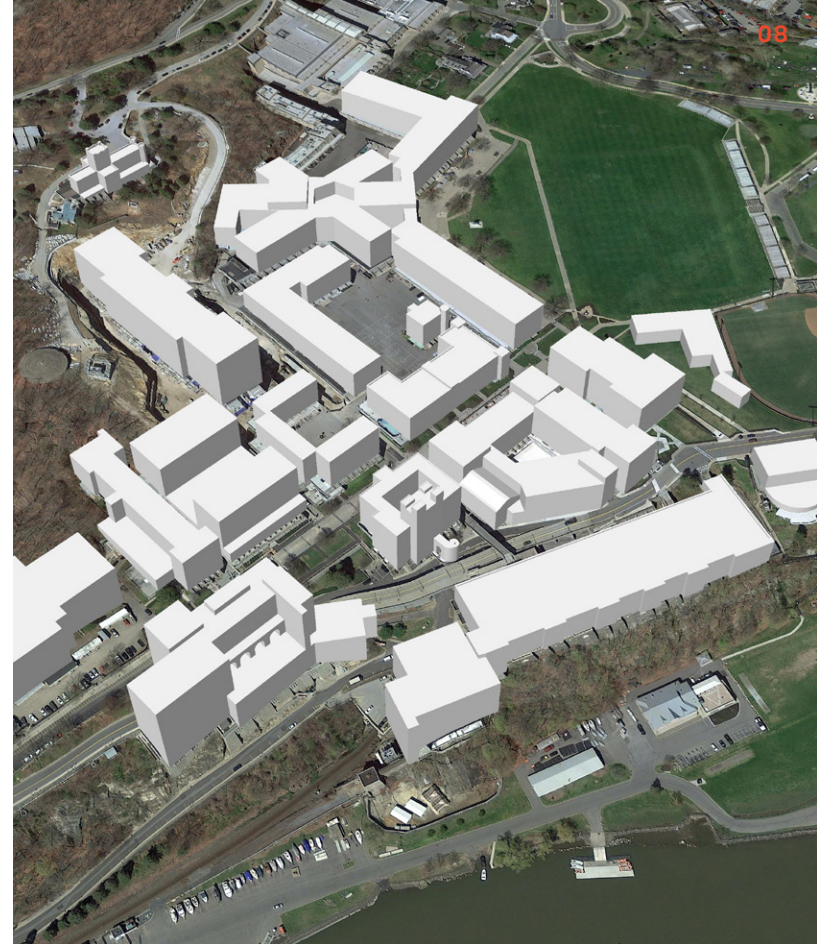
WSP developed ADPs for the Tank Hill and Silver Wings Districts at Fort Rucker, Alabama. These two districts comprise the main cantonment of the installation, and include academic campuses, enlisted housing, personnel support services, community support services, recreation and retail. The ADPs reinforce campus structure through consolidation of functions and transportation improvements while creating a clear framework for organization of existing and future capacity around a new network of multi-modal trails and greenways. The four plans were developed in accordance with UFC 2-100-01, Installation Master Planning, and each included a Facility Occupancy Verification Survey to identify candidates for consolidation, demolition and renovation over the next 20 years. Each plan also included GIS analysis of environmental, cultural, and operational conditions, and development of final plans and reports. The phasing of development and coordination between ADP area stakeholders and installation leadership was key to developing an executable plan. The implementation plans in the ADPs identify phasing and funding paths for each project.



## USACE MOBILE DISTRICT AND HQ INSTALLATION MANAGEMENT COMMAND, OUTDOOR RECREATION PLAN (ORP) FOR FORT BENNING, GEORGIA

07

The ORP is a fence-to-fence examination of the recreational resources at Fort Benning that creates a vision for improvements over the next 10-20 years. The plan lays the groundwork for an installation-wide wayfinding system, links natural recreational destinations via a network of blueways (streams and river access) and greenways (trails), and integrates active recreation sites into a series of connected recreational campuses. This ORP used the UFC-derived ADP process to help conceptualize the outdoor recreation areas, a new strategy for IMCOM that will improve installation and wayfinding on the site.



## USACE NEW YORK/US MILITARY ACADEMY (USMA), WEST POINT, N.Y. ACADEMIC BUILDINGS UPGRADE PROGRAM, PROGRAM VALIDATION AND MASTER PLAN

08

The WSP-Alliance Joint Venture supported USMA's G5R Unit in their development of the Academic Buildings Upgrade Program (ABUP). The team focused on program validation combined with 22 discrete tasks, including analysis of program sequence, AT/FP, site security and access control, circulation analysis, construction logistics and construction space allocation. The team also identified a required utilities upgrade, low impact development opportunities, and renovation strategies for all of USMA's historic academic buildings, which include landmark structures.





# Supporting national security programs clients around the world

Our national security programs team has successfully supported the US intelligence community throughout the world for 50 years. Projects have included siting studies, multi-disciplinary A/E services, and program/construction management and engineering services for several sensitive locations throughout the National Capital Region. WSP is also directly involved with several sensitive projects overseas.

Mission-critical projects require a high degree of attention to detail and proactive leadership. Our experience meeting sensitive requirements enables us to anticipate unknowns, deliver alternatives, and offer collaborative solutions. WSP's senior leadership and project delivery staff understand the no-fail need for quality and high performance our clients trust us to deliver.

WSP offers the following services to our secure clients:

- Construction management and project management
- Program support services for federal clients:
  - MAXIMO development
  - GIS, CAD, and BIM support
  - Program integration
  - Interior design / space planning
  - Electrical inspection
  - Military master planning
- A/E services for confidential federal clients:
  - Civil and structural engineering
  - Mechanical and electrical engineering
  - Architecture

## DEFENSE INFORMATION SYSTEMS AGENCY (DISA), DISA PROFESSIONAL ENGINEERING SERVICES CONTRACT 01

*Image: provided by client*

WSP provides support to the DISA facilities directorate across the full breadth of design disciplines for investigations/analyses, repair/renovation projects and operations and maintenance, as well as new construction support worldwide. We have been a trusted partner to DISA for over 10 years ensuring facility and engineering requirements are met in a timely and coordinated manner, with minimal impact on current operations while remaining flexible to emerging mission requirements. WSP also completed task order projects across a wide range of disciplines from developing cooling and electrical expansion reports for data centers, space planning for reorganizations of various DISA directorates, to repurposing and redesigning the DISA headquarters building.

## U.S. MARINE CORPS, OKINAWA, JAPAN, DEFENSE POLICY REVIEW INITIATIVE (DPRI) OKINAWA CONSOLIDATION (OKICON) AND FUTENMA REPLACEMENT FACILITY (FRF) PROGRAMS 02

*Image: taken by Fred Wenger*

Under the DPRI, the governments of the U.S. and Japan agreed to consolidate U.S. military facilities in the southern half of Okinawa and relocate them to the northern part of the island, and relocate Marine Corps Air Station (MCAS) Futenma. The consolidation required relocation of MCAS Futenma and new construction of barracks, admiration buildings, dining halls, maintenance facilities and warehouses, along with required roadways and utilities.

Over the past several years, more than 25 WSP professionals have supported the OkiCon and FRF program management office (on multiple contracts. Services included community planning, engineering services, architecture and landscape architecture consulting, security engineering, building information modeling, project scheduling and construction management. WSP represented DPRI OkiCon's and FRF's management in the day-to-day interface with program users and stakeholders - including Marine Forces Pacific, DPRI Planning Group, Marine Corps Installation Command Pacific, U.S. Army Corps of Engineers, and Okinawa Defense Bureau, managing a multi-billion-dollar, multi-decade consolidation program.

## CONFIDENTIAL FEDERAL CLIENTS SUPPORT TO THE INTELLIGENCE COMMUNITY 03

*Image: Taken from Wikipedia, Public Domain*

WSP supports various clients within the Intelligence Community (IC) with professional services and cleared A/E design support under our facility clearance. Years of experience has provided WSP's senior staff with a deep understanding of the complexities of the IC, its various agencies and respective missions, and the ability to anticipate client requirements and needs.

WSP provides on-site staff, experts in interior design, architecture, engineering, facility planning and project management. In addition to on-site staffing, our IC clients rely on WSP expertise for cleared A/E design services to provide solutions for infrastructure design, space planning, master planning and facility design.

## U.S. DEPARTMENT OF STATE, BUREAU OF OVERSEAS BUILDINGS OPERATIONS (OBO), OBO WORLDWIDE PROFESSIONAL ENGINEERING SERVICES CONTRACT 04

*Image: provided by client*

WSP provides engineering services and construction management for OBO, serving on site at various embassy and consulate locations around the globe. Our leadership team understands the needs of OBO project directors at each location, the logistics and care required to support overseas staff, and how to find the very best talent to support our national strategic interests. We have decades of experience supporting the Department of State and OBO.





# Providing logistics for emergency preparedness and response

Natural and man-made disasters can have crippling effects on the infrastructure and livelihood of entire communities. Logistics management and disaster preparedness are critical to national, state and local recovery teams to ensure that they are positioned to mitigate the effects of such events.

WSP understands that sustainable infrastructure requires an integrated, systems-based approach to managing natural resources, hard infrastructure and financial capital. While there is no silver bullet solution to infrastructure adaptation and resilience, there are cost-effective strategies that increase the reliability and functional life of infrastructure.

To date, WSP has deployed logistics management and emergency response teams to help communities recover from natural disasters, including Hurricanes Irma and Maria in Puerto Rico, Hurricane Hector in Hawaii, Hurricane Florence in Virginia and Typhoons Yutu and Wutip in Guam. With experts in offices across the globe, we can respond quickly to issues and challenges.

Our proven, rapid-response capabilities enable us to support those in immediate need, including delivery of supplies and emergency power generation. Our services and capabilities include:

- Logistics management
- Economic and risk analyses
- Damage assessment
- Environmental cleanup
- Aid management and distribution
- Emergency management and recovery planning
- Mitigation planning
- Cost recovery
- Remediation management
- Emergency power

## U.S. POSTAL SERVICE, OFFICE OF NATIONAL PREPAREDNESS EMERGENCY SERVICES 01

To help maintain operations in the face of disruptive emergency events, the U.S. Postal Service's (USPS) Office of National Preparedness (ONP) issues a limited number of contracts in the United States and its territories. WSP has been a prime consultant since 2006, leading a national team in executing a performance-based contract that targets capabilities-based response and recovery services aligned with the National Incident Management System, the National Response Plan and Homeland Security Presidential Directives 5, 7 and 8. To date, WSP has responded to events in every state and 17 of the 20 U.S. territories. The contract has been expanded to include non-emergency services as well.



## USACE, PITTSBURGH DISTRICT ADVANCED CONTRACT INITIATIVE AND 2017/2018 HURRICANE RESPONSE 02

After Hurricanes Irma and Maria struck, WSP successfully repaired and installed more than 2,000 generators and perform more than 2,000 installations at critical facilities throughout the islands. WSP mobilized all equipment and personnel within 21-24 hours of notice to proceed.

Our solutions to the many challenges presented by the hurricanes included the creation of Advance Echelon (ADVON) teams to execute local sourcing for critical equipment, saving the government valuable time and resources associated with transoceanic shipping; the introduction of 4x4 fueling assets to overcome rough terrain and service remote sites; and establishing a power field office with highly experienced staff to ensure efficient and sustained, long-term generator maintenance.



## FEDERAL EMERGENCY MANAGEMENT AGENCY (FEMA), HOUSING INSPECTION SERVICES 03

Since 1995, WSP has supported FEMA as a nationwide contractor responsible for inspecting homes damaged in presidentially-declared disasters. WSP is required to respond within 24 hours of any disaster, providing up to 70 skilled professionals for a duration of up to two months, 50 skilled professionals for up to six months, and senior-level professionals as necessary. To achieve the greatest efficiency and security, we maintain a team of experienced inspectors, as well as field incident managers, quality assurance personnel, software development and computer operations staff, prepared to respond to incidents immediately at FEMA's direction. These technical assistance contracts ensure availability of resources and personnel with technical skills and expertise for various services, including inspections, cost estimating, and damage and repair assessments, focusing on complex projects that are large, unusual, or have high dollar values. The data collected by these inspections is used by FEMA to determine the type and amount of assistance to be provided to applicants.

# 24/7 on-call readiness

As part of its FEMA emergency inspections services contract, WSP maintains a cadre of inspectors in a 24/7 on-call readiness state, as WSP must respond to disasters in every U.S. state and territory within 24 hours. The WSP team has responded to a wide range of disasters over the past 20 years, going back to the 1994 Northridge Earthquake and 1995-96 floods in California, and including earthquakes, floods, and hurricanes such as Hugo, Andrew, Katrina and Sandy. The 2017 fall hurricane season proved to be extraordinarily harsh, as our teams deployed over 5,800 inspectors to respond to hurricanes Harvey, Irma and Maria in Texas, Florida, Georgia, Puerto Rico and the Virgin Islands. Together they performed close to 1,000,000 inspections between September and December that year.





01



02



03

# Protecting and restoring our natural resources

Our diverse service offering includes:

- Industrial hygiene
- Environmental assessments
- Human health and ecological risk assessments
- Environmental and social impact studies
- Hazardous materials management
- Environmental remediation
- Feasibility studies
- Natural resource management
- Heritage resource management
- Solid waste management

WSP is a leader in the remediation, restoration and preservation of land, water and air resources. As a global firm with a team of environmental engineers, scientists, regulatory specialists and risk assessors, we understand policy, regulations and compliance frameworks at the local, state, federal and international levels.

Our experience enables us to design innovative remediation and restoration strategies and solutions that are sustainable and cost effective. These strategies have transformed urban waterways, degraded estuaries and contaminated parcels into revitalized public spaces, and they have promoted coordination, collaboration and knowledge-sharing among stakeholders.

## USACE, KANSAS CITY DISTRICT, HTRW 01

Over the course of more than 25 years, WSP has worked with USACE Kansas City District on the successful completion of many hazardous, toxic and radioactive waste (HTRW) projects.

Recent examples include completion of dredging oversight of the Hudson River in New York state, completion of a focused feasibility study and record of decision (ROD) on the Lower Passaic River, completion of two remedial investigation/feasibility studies and RODs at the Cornell-Dubilier superfund site, and completion of an open burning and open detonation feasibility study and ROD at Fort Riley, Kansas. WSP's structure and continuity with USACE have facilitated seamless performance on key projects for the U.S. Environmental Protection Agency Region 2.

## USACE, MISSOURI RIVER RECOVERY MANAGEMENT PLAN 02

The Recovery Management Plan and Environmental Impact Statement for the Missouri River (MRRMP-EIS) addressed the recovery of three listed species: the piping plover, the interior least tern and the pallid sturgeon. WSP, working with the USACE Omaha District, developed a programmatic assessment and incorporated adaptive management principles to achieve this goal, for a project area covering 2,400 miles across 10 states.

The WSP team developed and implemented a planning process and framework that integrated the USACE six-step planning process that complied with National Environmental Policy Act (NEPA) requirements. Following that, WSP planned and facilitated a charrette with USACE and U.S. Fish and Wildlife Service staff early in the MRRMP-EIS process to develop risk registers related to aspects of project execution. WSP also launched a series of online public scoping meetings, analyzed public comments and prepared a scoping summary report. The team provided technical support for a series of workshops and public meetings that focused on the development of species objectives and conceptual ecological models throughout the Missouri River Basin based on the MRRMP-EIS findings.

## FEDERAL ENERGY REGULATORY COMMISSION (FERC), HYDROPOWER 03

As lead environmental and engineering contractor supporting the FERC Office of Energy Projects since 1997, WSP assists the agency in its regulation of hydropower facilities throughout the U.S. WSP has processed more than 200 license applications under these contracts, providing NEPA support for applications filed under the Traditional Licensing Process, the Integrated Licensing Process and the Alternative Licensing Process.

Periodically, WSP also performs special studies, including feasibility studies for new construction, Clean Air Act conformity analyses and review and verification of outputs of hydrologic and hydraulic modeling.

WSP also assists the Division of Hydropower Administration and Compliance with regular post-license, on-site environmental inspections of licensed projects. In addition, WSP staff conducts on-site inspections and reviews a project's license articles and FERC filings for compliance with license articles. Reports, including maps and photographs, are provided to the FERC's regional office.





# Helping economies thrive

WSP's Overseas Economic and Institutional Development (EID) practice has implemented some of the largest economic development and infrastructure programs in transitional economies over the last 50 years. It has become a recognized partner to U.S. development agencies, banks, financial institutions, non-governmental organizations and global multilateral institutions.

The services provided by our EID practice include:

- Democratic governance
- Economic and social analysis
- Financial feasibility and services
- Institutional strengthening
- International relations and regional integration
- Local development
- Agricultural development
- Development and trade
- Stabilization and reconstruction
- Public administration

## USAID, NEPAL PUBLIC FINANCIAL MANAGEMENT (PFM) 01

To strengthen PFM systems at the national and sub-national levels throughout Nepal, our team of 40 professionals work closely in three interconnected technical areas: developing PFM systems at national and local government levels; improving controls and procurement in the Ministries of Education and Health; and increasing transparency and accountability of post-earthquake reconstruction.

As part of this \$14 million USAID-funded project, the WSP team produced a ground-breaking information technology and business process assessment that catalyzed the government towards an integrated financial management system strategy. WSP also trained over 1,500 local government financial staff on a newly developed, local-level financial management system.

Over the past  
**20 years**  
WSP's OED teams have... **Trained 250,000 People**



## USAID, CAP HAÏTIEN PORT, CONSTRUCTION-MANAGER-AS-CONSTRUCTOR (CMC) SERVICES 02

To help Cap Haitien Port become a regionally competitive seaport that will meet demand for container and other cargo traffic over the next 20 years, WSP is working on behalf of USAID to provide procurement support, technical assistance, design and construction supervision, safety oversight and quality assurance for the port's rehabilitation. In addition to construction management services, the WSP team in Haiti is also managing a stakeholders' group consisting of the port owner, Autorité Portuaire Nationale as well as port operators, facility tenants, commercial users and the construction firms to coordinate activities on the port during demolition and construction, as commercial use is continuing throughout the rehabilitation effort.

Facilitated  
**\$1 Billion**  
in Investments

Completed  
**1,760**  
Infrastructure Projects

Disbursed  
**\$1.5 Billion**  
Microloans

Created  
**>800,000**  
Jobs

Leveraged  
**\$1 Billion**  
Private Sales and Govt. Funds



## USAID, STRENGTHENING URBAN RESILIENCE FOR GROWTH WITH EQUITY (SURGE) 03

The USAID-SURGE initiative promotes secondary cities in the Philippines as hubs for economic growth through improved urban planning and resilience, local economic development, investment promotion and expanded rural-urban linkages via enhanced market access and infrastructure connectivity.

WSP has worked with USAID to achieve many goals in pursuit of this growth, including: linking more than 200 small-holder growers in Zamboanga City to major food firm San Miguel Corporation for a more stable and lucrative cassava market; organizing seaweed producers, buyers and technology providers in Palawan Province into a province-wide stakeholders' network to promote a more competitive seaweed industry; and advising the cities of Tagbilaran and Puerto Princesa on formulating tourism development plans to promote more visitor arrivals and tourism-related investments.





WSP USA  
One Penn Plaza  
New York, NY 10119  
main: +1-212-465-5000

[wsp.com](http://wsp.com)

## About WSP USA

WSP USA is the U.S. operating company of WSP, one of the world's leading engineering and professional services firms. Dedicated to serving local communities, we are engineers, planners, technical experts, strategic advisors and construction management professionals. WSP USA designs lasting solutions in the buildings, transportation, energy, water and environment markets. With more than 9,500 employees in 150 offices across the U.S., we partner with our clients to help communities prosper.

© 2019 WSP. All rights reserved.

US-CC-BR-Y738-EN-2019.04-001